

| FIRE HYDRANTS REQUIRED | | | | |
|--|----------------------|---------------------|-----------------------|----------------------------|
| SEE STANDARD WATER ASSEMBLY DETAILS, SHEET NO. 198 | | | | |
| LINE NO. | STATION | BURY LINE ELEVATION | TOP OF PIPE ELEVATION | FIRE HYDRANT BURY REQUIRED |
| 1 | 0+022.007 | 406.329 | 404.983 | 1.524 M (5.0') ** |
| 1 | 0+494.466 | 404.300 | 402.780 | 1.829 M (6.0') |
| 1 | 0+857.425 | 405.230 | 403.558 | 1.981 M (6.5') |
| 1 | 0+995.785 | 405.678 | 403.854 | 2.134 M (7.0') |
| 1 | 1+154.762 | 406.605 | 404.781 | 2.134 M (7.0') |
| 2 | 0+107.535 | 402.767 | 400.663 | 1.524 M (5.0') ** |
| 2 | 0+425.974 | 403.702 | 402.182 | 1.829 M (6.0') |
| 2 | 0+645.000 | 403.115 | 401.443 | 1.981 M (6.5') |
| 2 | 0+913.028 | 404.268 | 401.529 | 3.048 M (10.0') |
| 2 | 1+000.772 | 404.920 | 402.638 | 2.591 M (8.5') |
| 2 | 1+200.000 | 404.974 | 403.454 | 1.829 M (6.0') |
| 2 | 1+404.000 | 404.650 | 403.130 | 1.829 M (6.0') |
| 2 | 1+600.000 | 404.530 | 402.858 | 1.981 M (6.5') |
| 2 | 1+919.285 | 404.635 | 402.964 | 1.981 M (6.5') |
| 4 | 0+191.391 | 404.985 | 403.544 | 1.676 M (5.5') |
| 4 | 0+393.956 | 404.544 | 403.071 | 1.676 M (5.5') |
| 6 | 0+134.381 | 404.650 | 403.130 | 1.829 M (6.0') |
| 6 | 0+251.966 | 404.860 | 403.645 | 1.524 M (5.0') |
| 7 | 0+000.000 | 405.140 | 403.514 | 1.829 M (6.0') |
| 8 | 0+000.000 | 404.781 | 403.308 | 1.676 M (5.5') |
| 9 | 0+050.722 | 404.664 | 403.495 | 1.372 M (4.5') |

0+023.261
SEE TABLE FOR ELEVATION CHANGES ON SHEET 200C

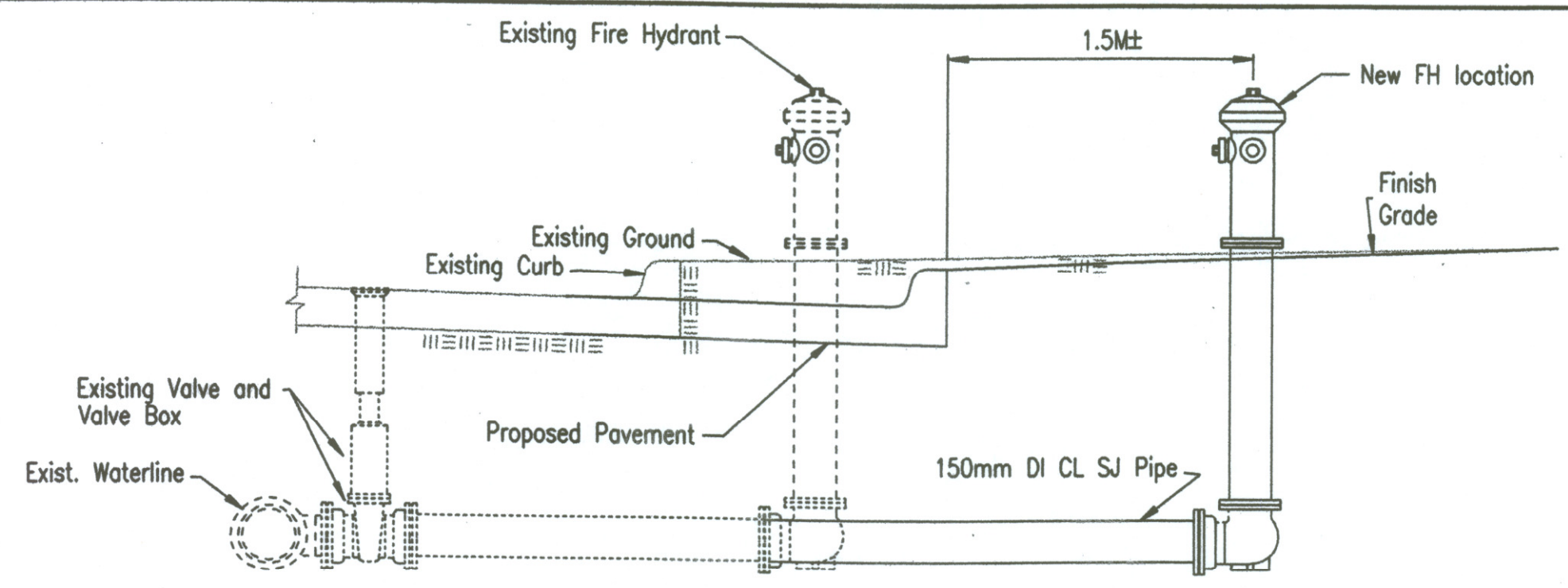
1+100.38
1+409.47
1+805.03

| FIRE HYDRANTS REQUIRED | | | | |
|--|-----------|---------------------|-----------------------|----------------------------|
| SEE STANDARD WATER ASSEMBLY DETAILS, SHEET NO. 198 | | | | |
| STATION | OFFSET | BURY LINE ELEVATION | TOP OF PIPE ELEVATION | FIRE HYDRANT BURY REQUIRED |
| RINGER | | | | |
| 1+024.000 | 6.5 M LT. | 403.700 | 402.227 | 1.676 M (5.5') Ⓡ |
| | | 403.874 | 402.401 | |

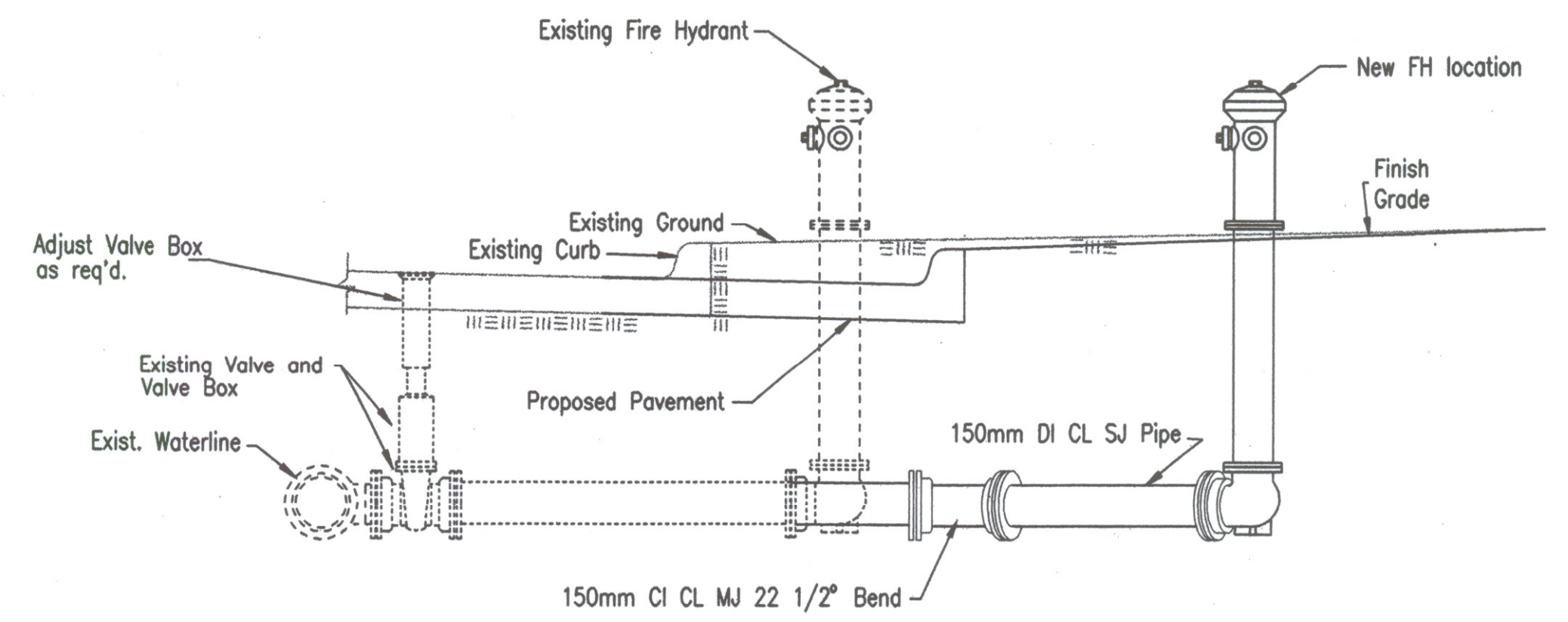
⊕ The Contractor shall use Standard 1.372 M (4.5') or 1.524 M (5') Fire Hydrant with Hydrant Barrel Extensions as required.

** Anchored FH Setting. See Detail, this sheet.

Ⓡ FH Assy. (Tapped). See Detail, this sheet. See General Note 15, Sheet 196.

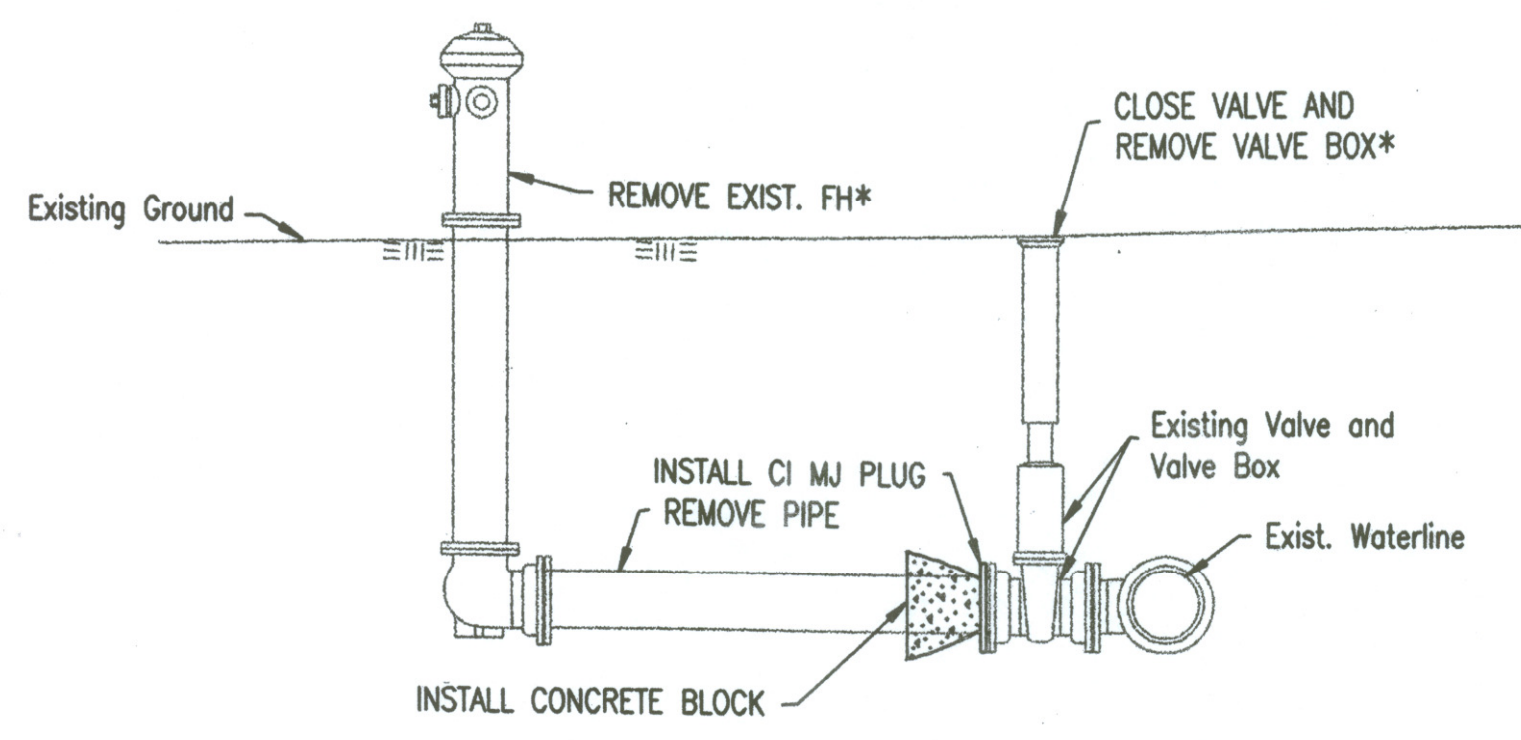


FIRE HYDRANT RELOCATION
@ TYLER, STA. 5+170.098, 10.579 M LT.

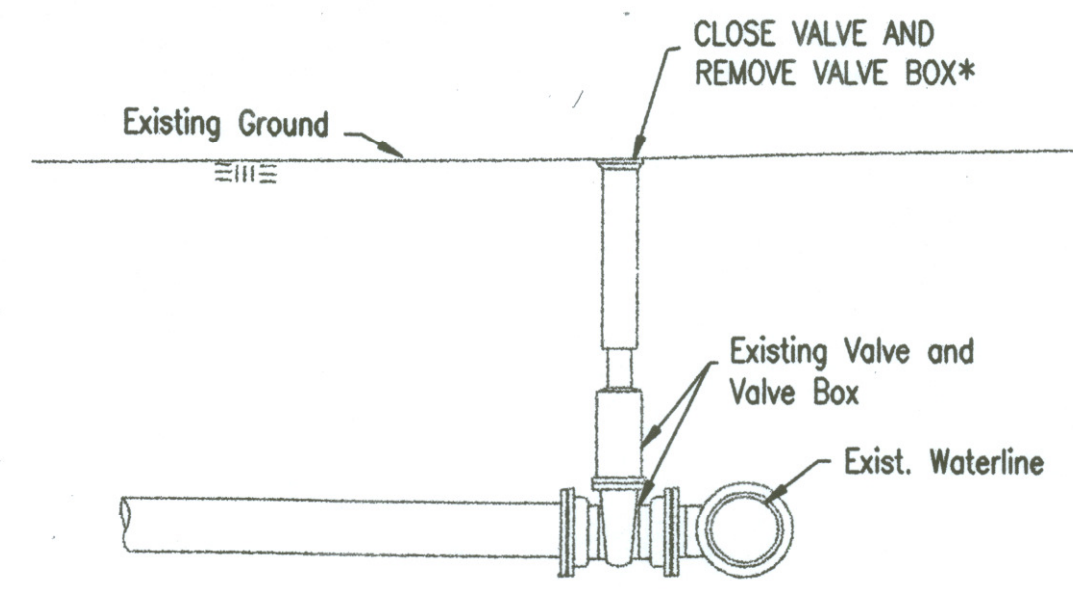


FIRE HYDRANT RELOCATION
@ TYLER RD. STA. 5+271.450, 9.856 M LT.
(SEE SHEET 203 FOR PLAN)

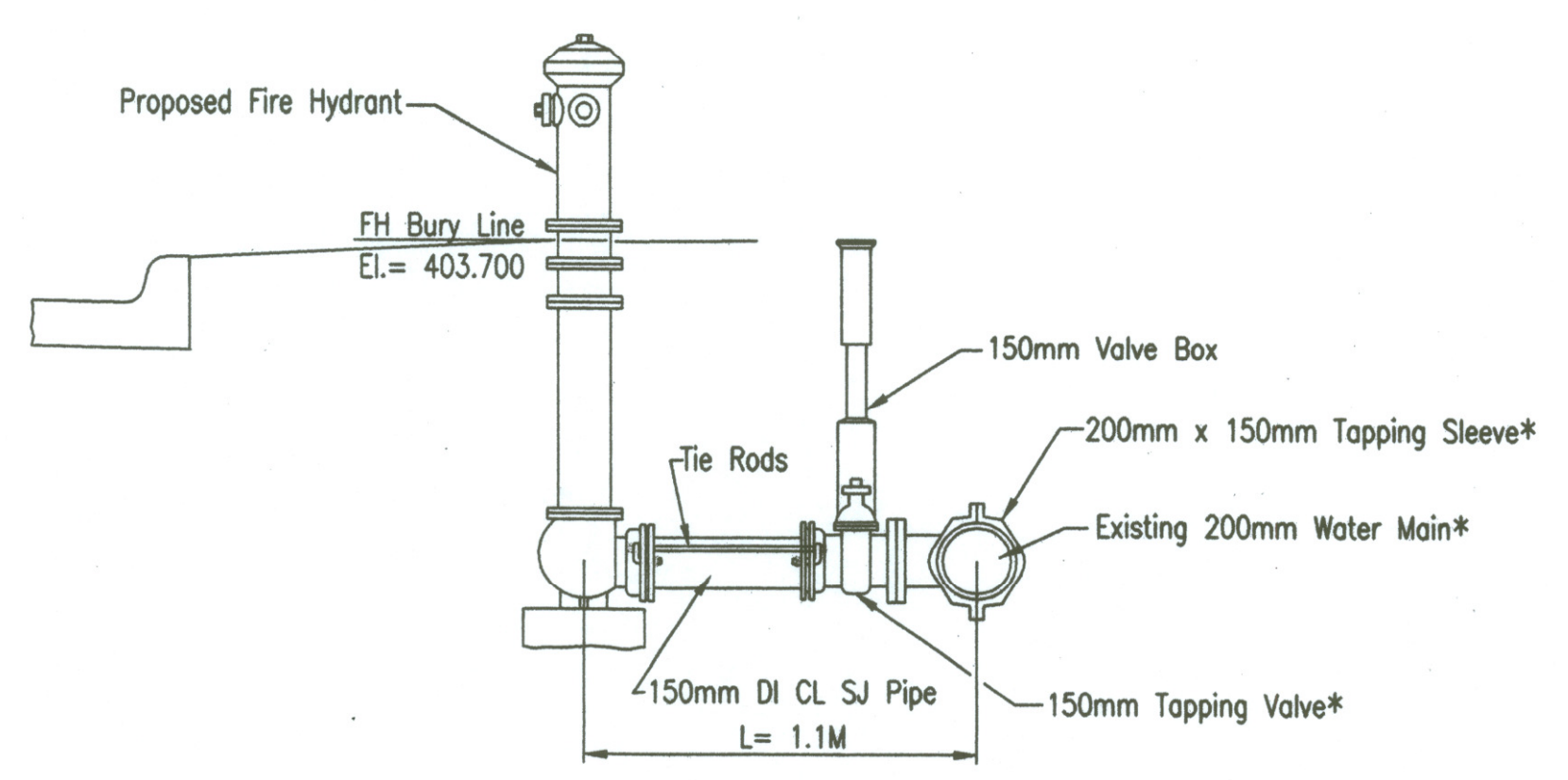
| FIRE HYDRANT RELOCATION SCHEDULE | | | | |
|----------------------------------|------------|---------------------------------|------------|-----------|
| EXISTING FH LOCATION | | RELOCATED FIRE HYDRANT LOCATION | | |
| STATION | OFFSET (M) | STATION | OFFSET (M) | ELEVATION |
| Tyler Rd. | | | | 5.74 |
| 5+170.098 | 10.579 Lt. | 5+168.50 | 15.520 Lt. | 404.800 |
| 5+271.450 | 9.586 Lt. | 5+272.381 | 13.777 Lt. | 404.790 |
| | | | | 733 |



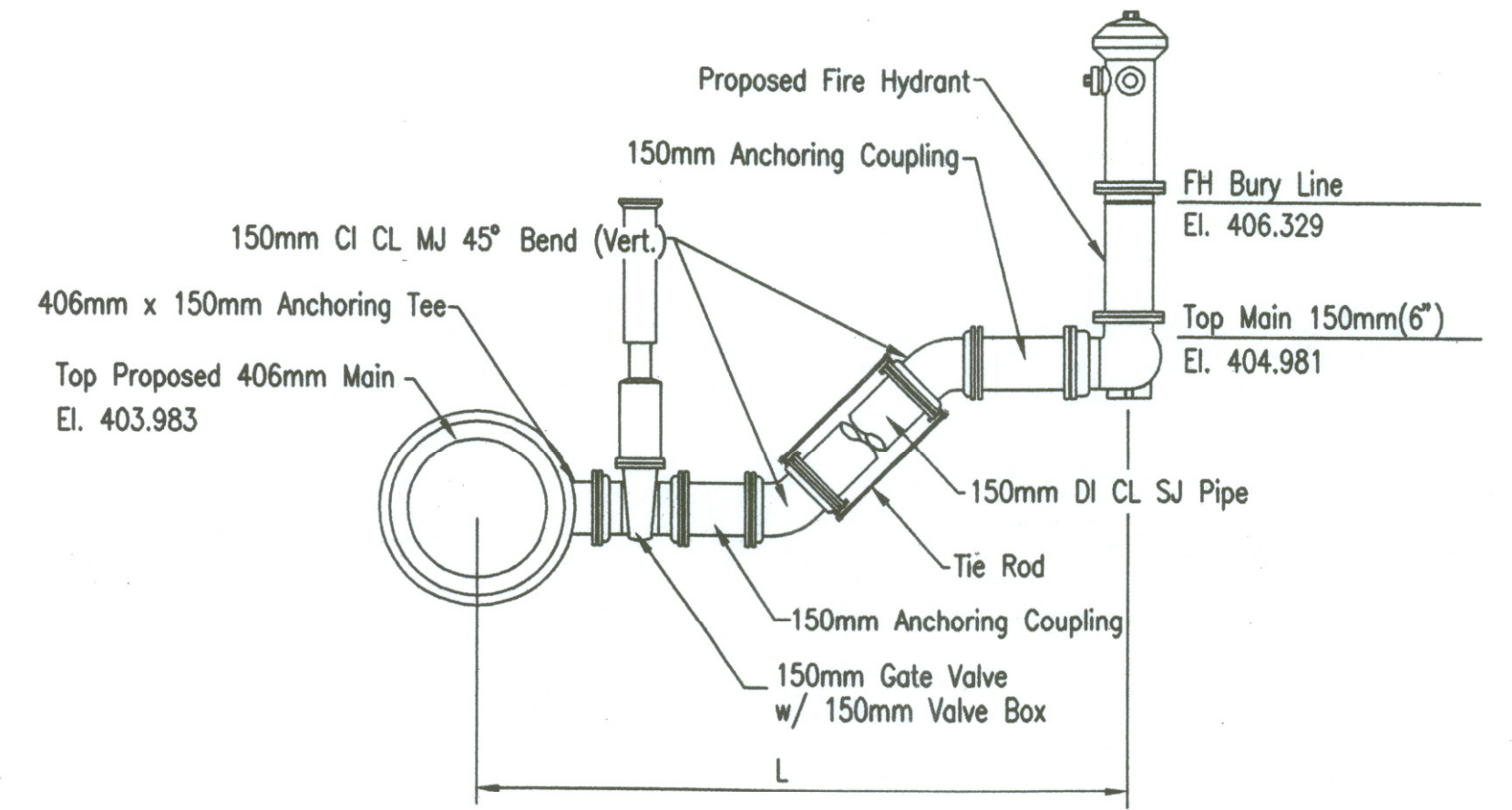
FIRE HYDRANT REMOVAL AND VALVE ABANDONMENT DETAIL
* TO BE SALVAGED AND DELIVERED TO THE WICHITA WATER DEPT.



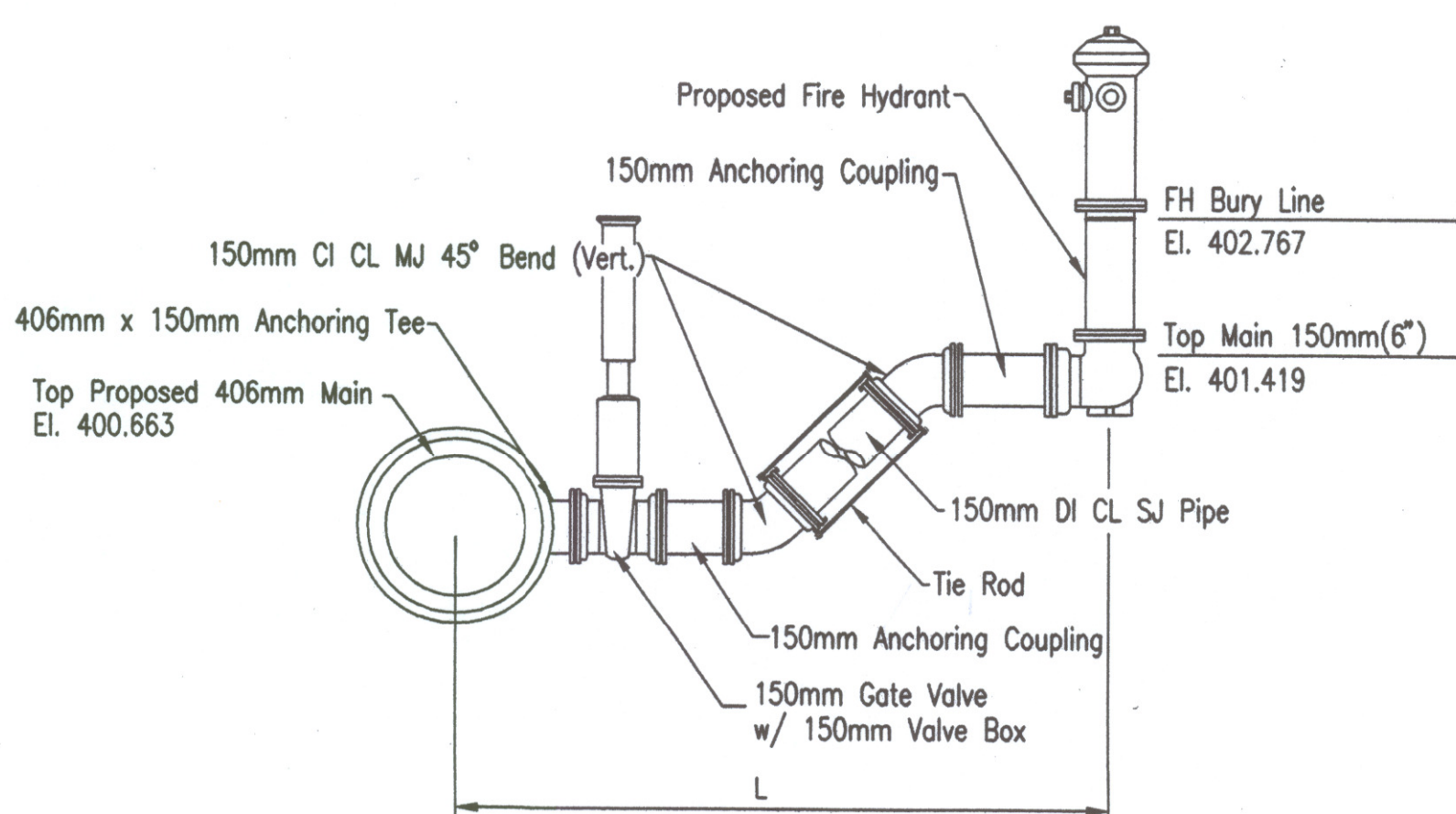
VALVE ABANDONMENT DETAIL
* TO BE SALVAGED AND DELIVERED TO THE WICHITA WATER DEPT.



FIRE HYDRANT ASSEMBLY(TAPPED)
@ Ringer, Sta. 1+024.000, 6.500 M LT.=
* Furnished and set by the City of Wichita Water Department. The Contractor to reimburse the City for this work.



**ANCHORED FIRE HYDRANT SETTING DETAIL
@ US-54, Sta. 13+999.443, 57.390 M LT.=
WL 1, Sta. 0+022.697



**ANCHORED FIRE HYDRANT SETTING DETAIL
@ US-54, Sta. 16+440.423, 46.224 M Rt.=
WL 2, Sta. 0+107.535

See Inspector's Sketches Sheets 200A, 200B & 200C

RECORD DRAWING
Larry D. Powell 10-18-04

| 1 | | | |
|--|-----------|------------|-------------|
| No. | Revisions | By | Date |
| CITY OF WICHITA, KANSAS | | | |
| FIRE HYDRANT DETAILS | | | |
| SEDGWICK COUNTY | | | |
| Professional Engineering Consultants, P.A. 303 S. TOPEKA • WICHITA, KANSAS 67202 316-262-2691 • FAX 316-262-3003 | | | |
| Designed by | KJW | Checked by | |
| Drawn by | TDS, JGA | Date | APRIL, 2002 |
| | | Job No. | 97362 |

DSNR: KJW OPER: IDS SCALE: 1=0.02 0:\1997\97362\007\misc\dfs 04-12-2002 10:55:25 am