

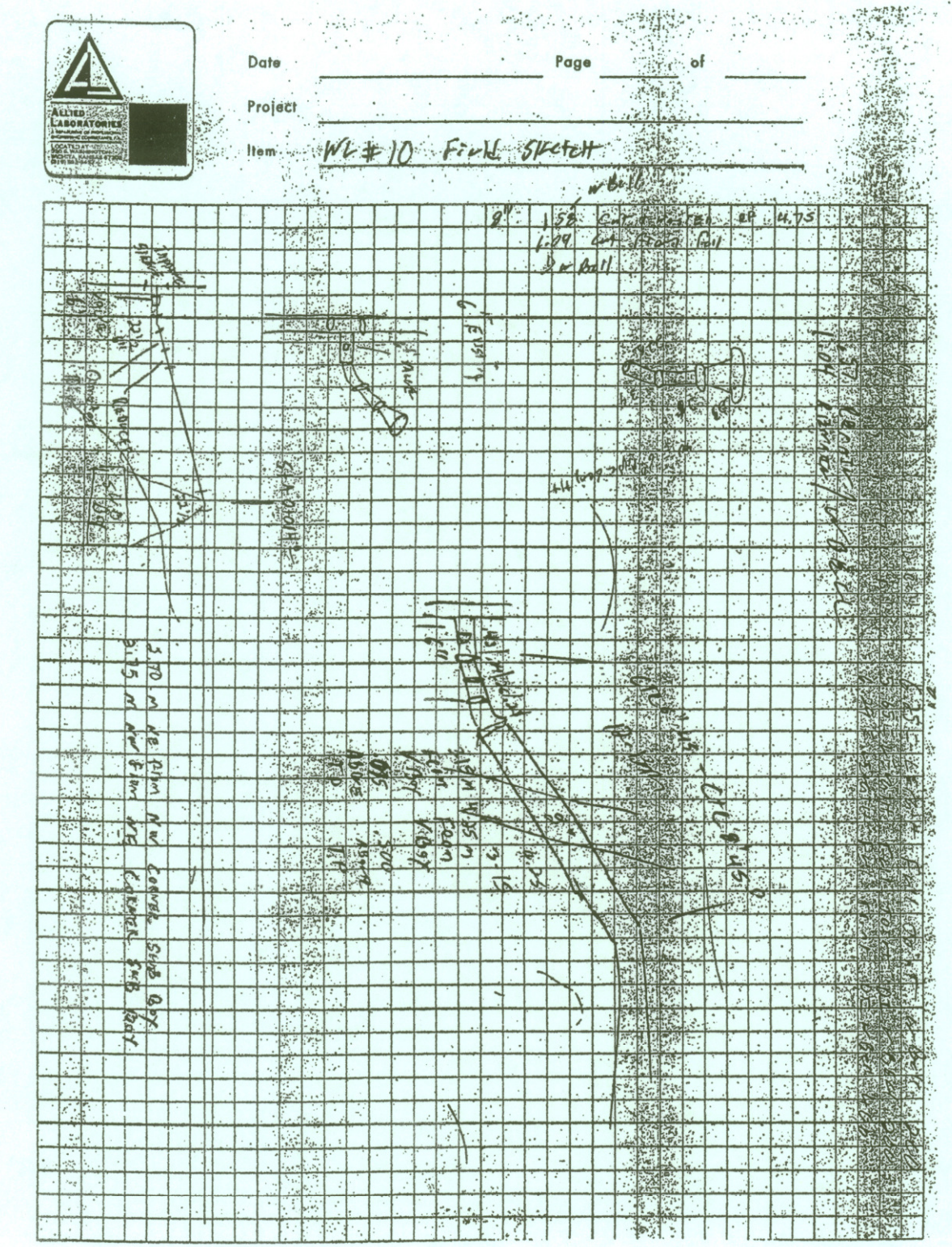
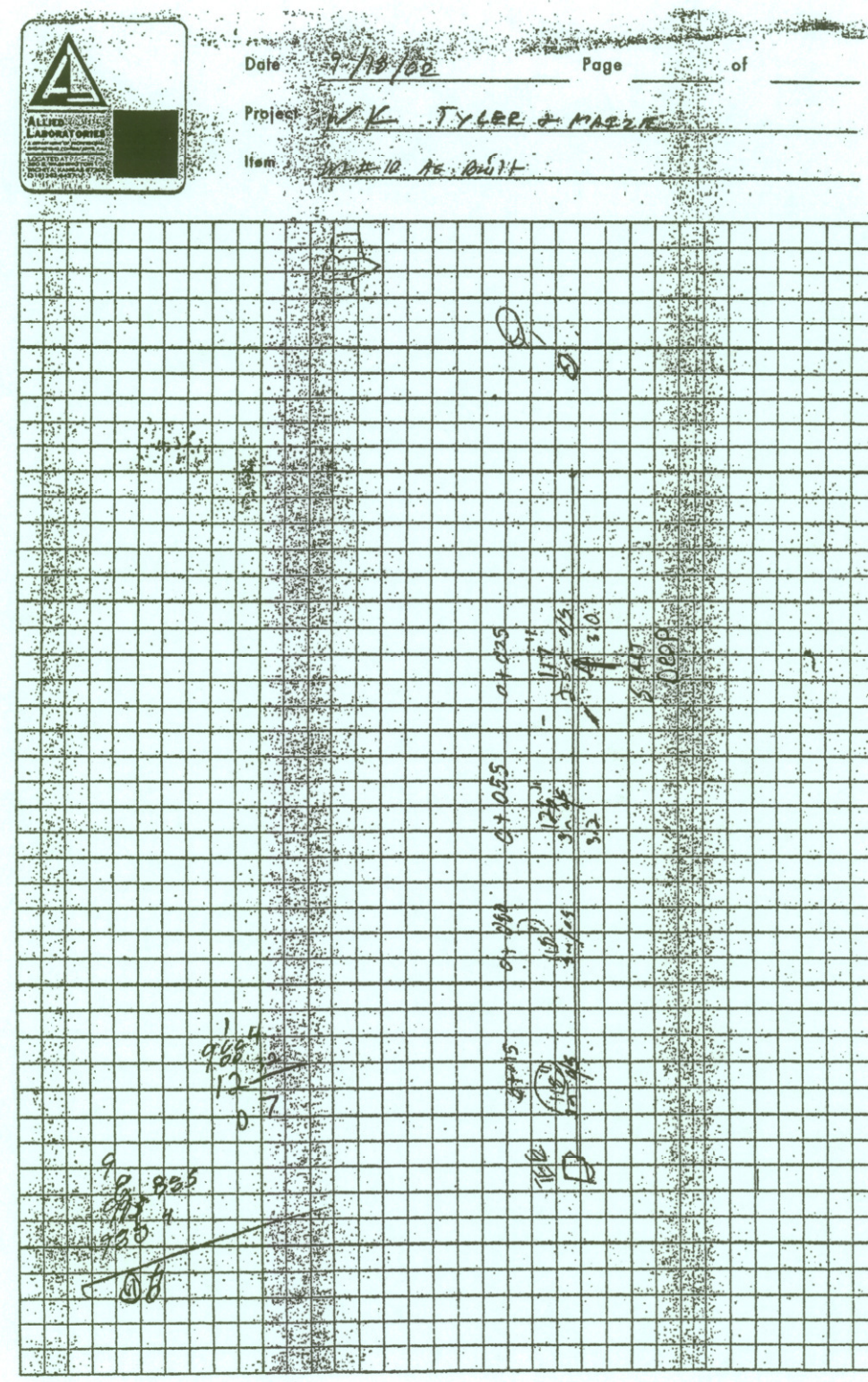
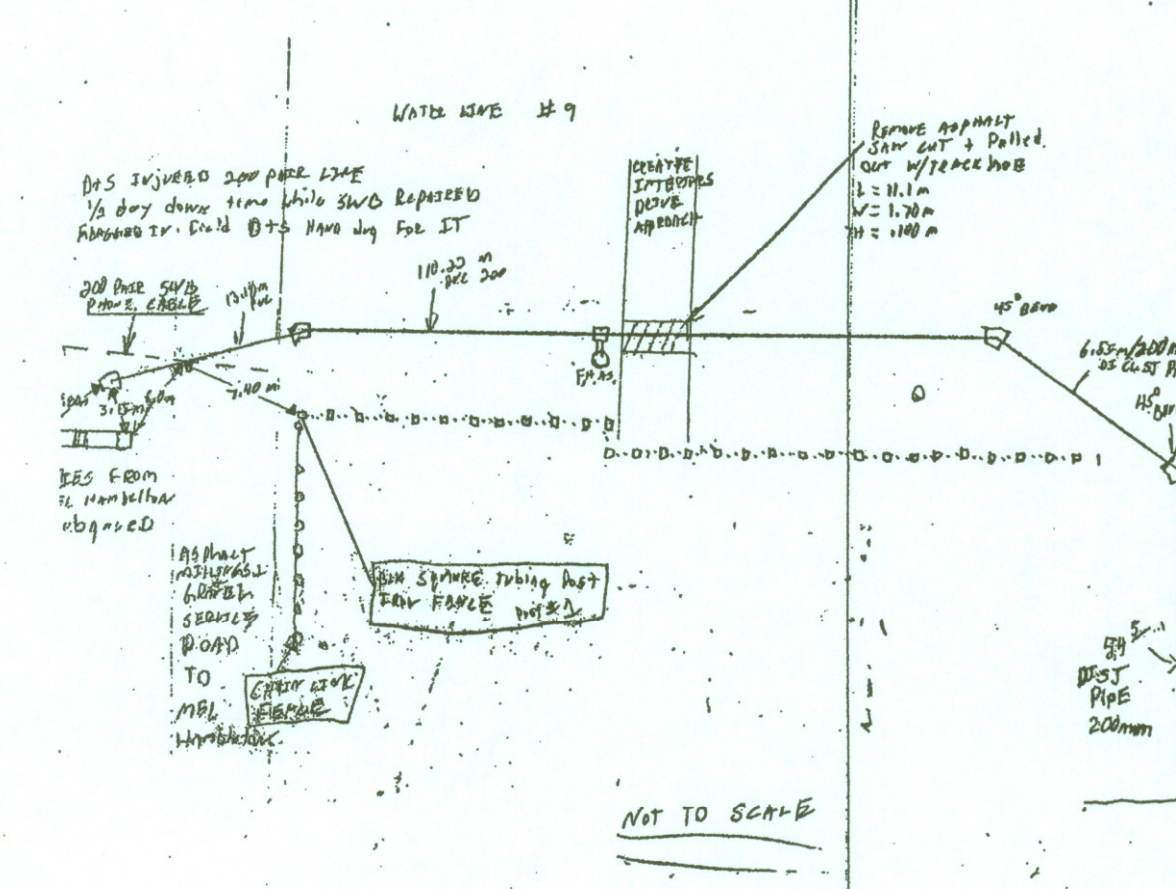
WL #9 AS BUILT

Distances of high water mark of main sewer force main interceptors not to scale - vertical control of RL SW FENCE

Point #3 6.50m
#5 6.50m
#9 6.20m
#19 6.45m
#25 0.70m
#34 0.70m
#44 0.10m

MATERIAL USED
80 CHAINS + 1.0m cut PVC
10 joints +
2 x 1 1/2" O.D.
2 x 4" 8" dia
1 x 4" assembly 1/2"

DATE 7/10/02 Page 1 of 1
Project W/K TYLER + MAIZE
Item WL #9 AS BUILT



West Kellogg Freeway
Maize and Tyler Interchanges

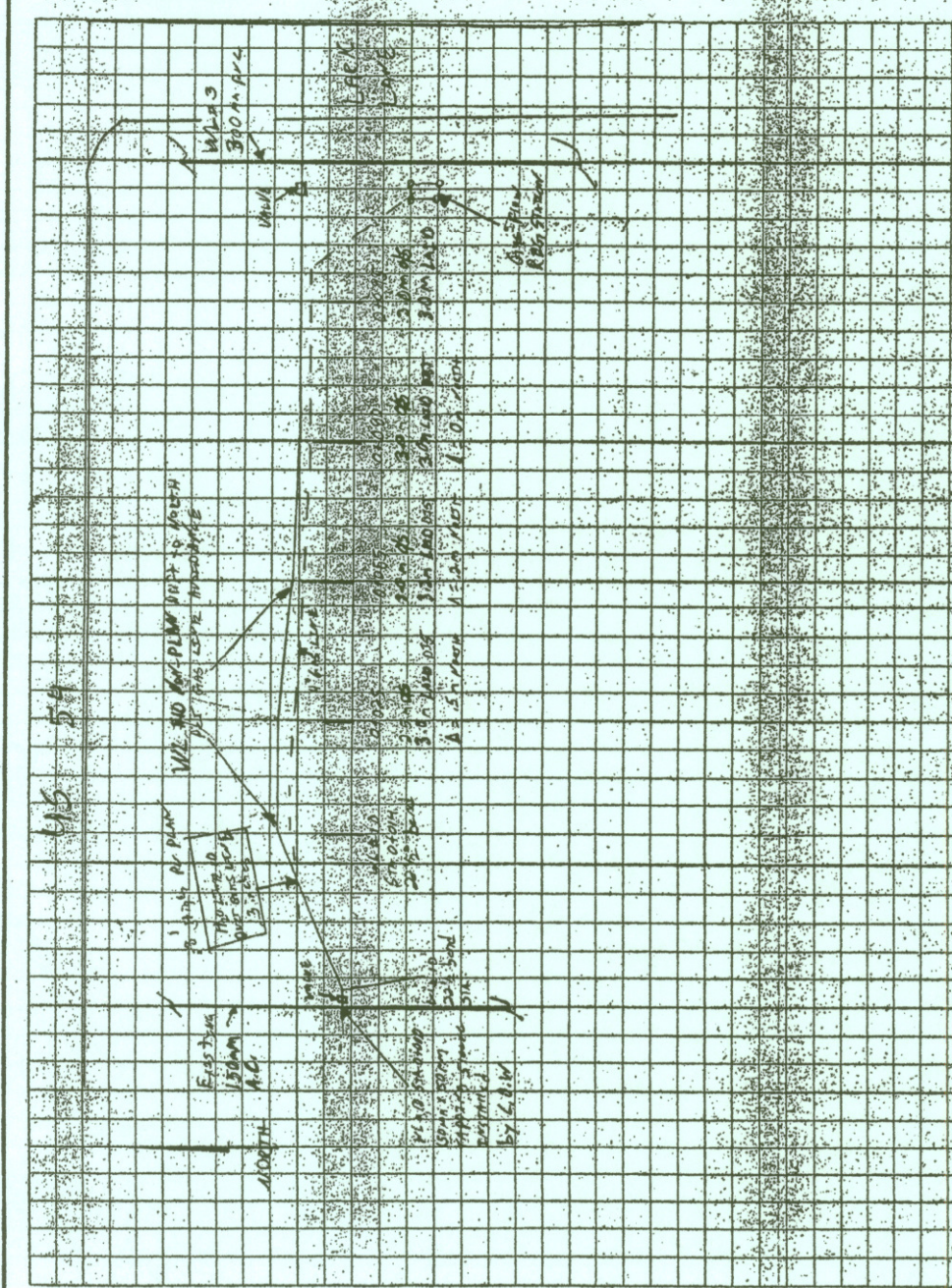
ELEVATION CHECKS
INSTALLED FIRE HYDRANTS

Fire Hydrant Elevations

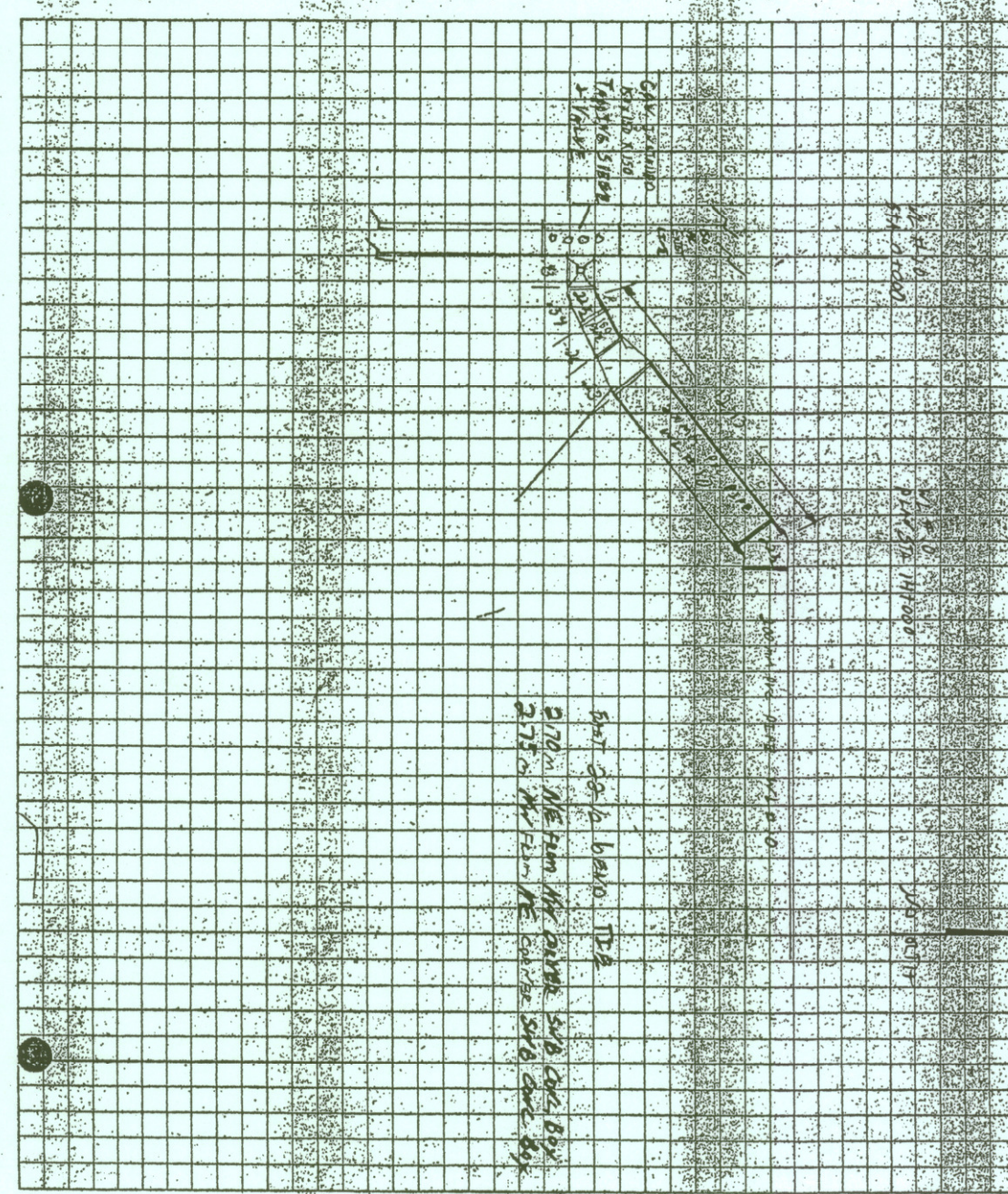
WL NO.	WATERLINE STATION	MAINLINE STATION	PLAN BURY LINE ELEVATION	ACTUAL BURY LINE ELEVATION	DIFF. (+/-)	PLAN TOP OF PIPE ELEVATION	ACTUAL TOP OF PIPE ELEVATION	DIFF. (+/-)	NOTES
1	0 + 023.261	14 + 000.007	406.329	406.207	(0.122)	404.983	403.314	(1.669)	
1	0 + 494.466	14 + 468.498	404.300	404.242	(0.058)	402.780	402.384	(0.396)	Extra 1" extension
1	0 + 857.425	14 + 828.008	405.230	405.302	0.072	403.558	403.558	0.000	
1	0 + 995.785	14 + 966.173	405.678	405.712	0.034	403.854	403.854	0.000	
1	1 + 154.762	15 + 126.184	406.605	406.648	0.043	404.781	404.781	0.000	
2	0 + 107.535	16 + 440.423	402.767	402.815	0.048	400.663	400.663	0.000	
2	0 + 425.974	16 + 756.884	403.702	404.084	0.382	402.182	402.182	0.000	Appears to be 12" high to avoid gas line
2	0 + 645.000	16 + 975.793	403.115	403.379	0.264	401.443	402.050	0.607	
2	0 + 913.028	17 + 243.808	404.268	404.355	0.087	401.529	401.529	0.000	
2	1 + 000.772	17 + 328.659	404.920	404.944	0.024	402.638	402.638	0.000	Raise valve box
2	1 + 166.380	17 + 489.862	404.903	405.084	0.181	403.384	403.564	0.180	
2	1 + 409.470	17 + 738.908	404.650	404.677	0.027	403.113	403.113	0.000	Need to lower valve box.
2	1 + 805.030	18 + 141.637	404.530	404.510	(0.020)	402.858	402.858	0.000	
2	1 + 919.285	18 + 170.679	404.635	404.518	(0.117)	402.964	402.964	0.000	
4	0 + 191.391	5 + 185.496	404.985	405.002	0.017	403.511	403.361	(0.150)	Dubon extra 6" extension
4	0 + 393.956	5 + 387.057	404.544	404.592	0.048	403.071	403.071	0.000	Dubon
6	0 + 134.381	5 + 431.174	404.650	404.773	0.123	403.130	403.130	0.000	Tyler buried flange
6	0 + 251.966	5 + 548.731	404.860	404.970	0.110	403.645	403.425	(0.220)	Tyler
7	0 + 000.000	4 + 950.773	405.140	405.148	0.008	403.514	403.514	0.000	Tyler
8	0 + 000.000	18 + 062.482	404.781	404.868	0.087	403.308	403.308	0.000	
9	0 + 050.722	14 + 325.779	404.644	404.697	0.053	403.495	403.495	0.000	
1	024.000	01 + 024.000	403.700	403.874	0.174	402.227	402.401	0.174	Ringer
5	170.098	05 + 168.500	404.600	404.574	(0.026)				Tyler
05	271.450	05 + 272.381	404.790	404.733	(0.057)				Tyler

H:\West Kellogg Freeway\Quantities\Waterline Data.xls Fire Hydrant Elevations
Page 1 of 1
LAST UPDATED: 10/28/2004

Date 9/17/02 Page 1 of 1
Project W/K TYLER + MAIZE
Item WL #10 TAPPING DATA AS BUILT



Date 9/25/02 Page 1 of 1
Project W/K TYLER + MAIZE
Item WL #10 TAPPING DATA AS BUILT



West Kellogg Freeway
Maize and Tyler Interchanges
25mm (1") SERVICE CONNECTION SCHEDULE
AS BUILT

EXISTING METER BOX LOCATION				RELOCATED METER BOX LOCATION								
MAINLINE STATION	OFFSET (m)	SIDE	ENGLISH UNITS DESCRIPTION	MAINLINE STATION	OFFSET (m)	SIDE	ENGLISH UNITS DESCRIPTION	DISTANCE FROM MAIN TO BOX (m)	PLAN METER BOX ELEV.	ACTUAL METER BOX ELEV.	DIFF. (+/-)	ADDRESS
TYLER												
14 + 312.594	15.320	RT	7' S of S Perm. Kellogg Dr., 68' W of CL Drive to 11701	14 + 298.200	41.290	RT	18.1' S of S BOC, 146' W of Entrance Centerline	3.500	405.122	405.122	0.000	11711 W Kellogg
14 + 375.684	18.435	RT	12.7' S of S Perm. Kellogg Dr., 81' W of E End of Perm.	14 + 377.200	44.200	RT	23.9' S of S BOC, 141' E of Entrance Centerline	2.810	404.497	404.497	0.000	11701 W Kellogg
14 + 828.096	42.898	LT	4.3' E of E PL Sewell, 1.29' S of S RW Kellogg	Same	Same	LT	33.1' N of N BOC, 33.9' E of 11th St	6.550	405.212	405.212	0.000	11118 W Kellogg
16 + 471.144	50.192	RT	27' E of the E PL Sewell, 1.29' S of S RW Kellogg	Same	Same	RT	45.28' S of S BOC, 162' E of Centerline of Sewell Ave.	5.480	402.822	402.745	(0.077)	9501 W Kellogg
16 + 573.412	47.281	RT	426' E of the E PL Sewell on S RW Kellogg	Same	Same	RT	31.8' S of S BOC, 414' E of Centerline of Sewell Ave.	4.160	403.596	403.560	(0.036)	9401 W Kellogg
16 + 858.928	44.055	RT	539' W of the W PL Byron, on S RW Kellogg	Same	Same	RT	19.79' S of S BOC, 34.9' NNE of NW Bldg. Corner	8.070	403.523	403.504	(0.019)	9127 W Kellogg
17 + 004.794	42.180	RT	48' W of the W PL Byron, on S RW Kellogg	Same	Same	RT	22.79' S of S BOC, 42.29' NNE of NW Bldg. Corner	8.530	403.324	403.400	0.076	9021 W Kellogg
17 + 123.300	41.399	RT	277' E of the E PL Byron, 1' S of S RW Kellogg	Same	Same	RT	20.79' S of S BOC, 329' E of E Entrance Centerline	7.979	403.633	403.633	0.000	8925 W Kellogg
17 + 125.153	41.458	RT	289' E of the E PL Byron, 1' S of S RW Kellogg	Same	Same	RT	20.79' S of S BOC, 28.9' W of E Entrance Centerline	8.038	403.600	403.600	0.000	8925 W Kellogg
17 + 170.848	39.970	RT	432' E of the E PL Byron, 2' N of S RW Kellogg	Same	Same	RT	16.90' S of S BOC, 29' NNE of NW Bldg. Corner	6.700	403.830	403.830	0.000	8923 W Kellogg
17 + 385.134	56.250	RT	201' E of E PL Tyler, 2' N of S RW Kellogg	Same	Same	RT	8.0' S of S BOC, 31.29' E of Entrance Centerline	13.600	405.394	405.394	0.000	8725 W Kellogg
17 + 414.814	55.099	RT	7' E of W PL, 18' S of CL Irving	17 + 415.930	65.750	RT	2.9' S of S BOC, 169' W of Centerline of Irving	11.900	405.436	405.378	(0.058)	8629 W Kellogg
17 + 519.430	36.451	RT	87' E of E RW Irving, 4' S of S RW Kellogg	Same	Same	RT	15.9' S of S BOC, 179' E of Centerline of Irving	2.130	405.269	405.269	0.000	8619 W Kellogg
17 + 553.912	36.590	RT	191' E of E RW Irving, on S RW Kellogg	Same	Same	RT	15.79' S of S BOC, 289' E of Centerline of Irving	1.950	405.109	405.109	0.000	8535 W Kellogg
17 + 607.355	37.458	RT	524' W of CL Rea, 4' N of S RW Kellogg	Same	Same	RT	19' S of S BOC, 524' W of Centerline of Rea	1.220	405.048	405.006	(0.042)	8401 W Kellogg
17 + 503.604	37.976	RT	504' W of CL Rea, 4' N of S RW Kellogg	Same	Same	RT	29' S of S BOC, 4' E of W Entrance Curb Line	1.290	404.905	404.905	0.000	8451 W Kellogg
17 + 682.430	40.123	RT	220' W of CL Rea, 1' N of S RW Kellogg	Same	Same	RT	16' S of S BOC, 220' W of Centerline of Rea	2.130	405.144	405.144	0.000	8401 W Kellogg
17 + 796.911	44.543	RT	117' E of E PL Rea, 1' S of S RW Kellogg	Same	Same	RT	29' S of S BOC, 149' E of Centerline of Rea	4.200	404.929	404.929	0.000	8323 W Kellogg
17 + 936.029	38.114	RT	884' E of CL Rea, 19' N of S RW Kellogg	Same	Same	RT	17.87' S of S BOC, 884' E of Centerline of Rea	1.100	404.647	404.569	(0.078)	8211 W Kellogg
18 + 015.498	36.018	RT	483' W of CL Woodchuck, on S RW Kellogg	Same	Same	RT	14.8' S of S BOC, 483' W of Centerline of Woodchuck	4.400	404.600	404.448	(0.152)	8181 W Kellogg
18 + 060.930	31.892	RT	341' W of CL Woodchuck, 19' S of N RW Kellogg	Same	Same	LT	12.8' N of N BOC, 342' W of Centerline of Woodchuck	1.750	404.780	404.818	0.038	8100 W Kellogg
18 + 095.112	33.071	RT	224' W of CL Woodchuck, on S RW Kellogg	Same	Same	RT	5.9' S of S BOC, 224' W of Centerline of Woodchuck	3.100	404.513	404.400	(0.113)	8027 W Kellogg
MAIZE												
03 + 694.634	9.800	LT	339' N CL Ringer, 17' W of E RW Maize	Same	11.300	LT	10.3' E of E BOC, 339' N of Centerline of Ringer	403.444	403.444	403.444	0.000	1414 S Maize Rd.
03 + 696.597	14.612	RT	339' N CL Ringer, 2' E of W RW Maize	Same	14.600	RT	332' N of Centerline of Ringer, 10.2' W of W BOC	27.806	404.069	404.069	0.000	1411 S Maize Rd.
03 + 734.790	11.936	LT	207' N CL Ringer, 10.8' W of E RW Maize Rd.	Same	Same	LT	207' N of Centerline of Ringer, 1.2' E of E BOC	403.554	403.554	403.554	0.000	1434 S Maize Rd.
04 + 184.740	14.284	LT	311' S CL RW Crossing, 3' W of E RW Maize Rd.	Same	Same	LT	7' E of E BOC, 489' S Centerline of Kellogg	8.400	403.138	403.778	0.640	1632 S Maize Rd.
04 + 325.005	12.400	RT	139' N of CL Maize, 3.2' E of W RW Maize Rd.	Same	Same	RT	139' N of Centerline Maize, 18.8' W of W BOC	25.200	403.470	403.613	0.143	1735 S Maize Rd.
04 + 358.361	8.400	RT	10.8' S of S Drive, 22.8' E of W RW Maize Rd.	Same	11.500	RT	8.8' W of W BOC, 28' N of Centerline of Maize	24.100	403.440	403.573	0.133	1745 S Maize Rd. #2
04 + 414.351	7.100	RT	182' N CL Carr, 27' E of W RW Maize Rd.	Same	11.500	RT	11.1' W of W BOC, 182' N of Centerline of Carr	23.800	403.690	403.638	(0.052)	1745 S Maize Rd.

H:\West Kellogg Freeway\Quantities\Waterline Data.xls 25mm Service Connection Sch.
Page 1 of 2
LAST UPDATED: 1/23/2004

West Kellogg Freeway
Maize and Tyler Interchanges
25mm (1") SERVICE CONNECTION SCHEDULE
AS BUILT

EXISTING METER BOX LOCATION				RELOCATED METER BOX LOCATION								
MAINLINE STATION	OFFSET (m)	SIDE	ENGLISH UNITS DESCRIPTION	MAINLINE STATION	OFFSET (m)	SIDE	ENGLISH UNITS DESCRIPTION	DISTANCE FROM MAIN TO BOX (m)	PLAN METER BOX ELEV.	ACTUAL METER BOX ELEV.	DIFF. (+/-)	ADDRESS
TYLER												
04 + 933.243	12.310	RT	410' S CL Belview, 29' E of W RW Tyler	Same	Same	RT	1' W of W BOC, 410' S of Centerline of Belview	17.600	404.918	404.918	0.000	1255 S Tyler Rd.
05 + 236.657	10.036	RT	168' N of N RW Cen Ks Rwy, 18' E of W RW Tyler	Same	Same	RT	8.1' W of W BOC, 250' N of 7x14' RCB Centerline	17.443	404.599	404.599	0.000	1445 S Tyler Rd.
05 + 367.029	10.871	LT	174' S of S RW Cen Ks Rwy, 14' W of E RW Tyler	05 + 368.334	12.900	LT	7.7' E of E BOC, 354' N of Centerline of Monroe Circle	0.450	404.663	404.663	0.000	1520 S Tyler Rd.
05 + 402.884	13.922	LT	283' S of S RW Cen Ks Rwy, 4' W of E RW Tyler	Same	13.260	LT	13.1' E of E BOC, 183' N of Centerline of Monroe Circle	0.481	404.550	404.457	(0.093)	1520 S Tyler Rd.
05 + 544.222	11.690	RT	229' N CL Harry, 11' E of W RW Tyler	Same	25.200	RT	7.8' W of W BOC, 229' N of Centerline of Harry	25.200	402.660	404.791	2.131	1555 S Tyler Rd.
WOODCHUCK												
04 + 930.845	11.700	LT	38' E of E BOC, 129' N of BOC Frontage Rd EB	Same	11.700	LT	24' E of E BOC, 129' N of BOC Frontage Rd EB	7.310	404.480	404.480	0.000	7940 W Kellogg
NEW METER												
			Family Worship Center	14 + 816.164	87.800	RT	107' S of S BOC, 33' E of Centerline of 11th Street	1.980	405.327	405.327	0.000	
			Horton's Furniture	15 + 106.077	113.170	RT	246' S of S BOC, 29' W of Centerline of Alley Access	2.590	406.418	406.418	0.000	
Extra Work												
17 + 873.000	Autolek	17 + 873.900	42.200	RT	29' S of S BOC, 64.9' E of Centerline of Entrance	2.850	404.897	404.897	0.000	8221 W Kellogg		
18 + 175.300	Dream Machine	18 + 176.800	36.100	RT	8.9' S of S BOC, 42' E of Centerline of Woodchuck	5.600	404.655	404.655	0.000	7979 W Kellogg		
17 + 241.800	Paintball	17 + 238.000	41.200	LT	21.3' N of N BOC, 354' W of Centerline of Tyler	99.000	404.693	404.693	0.000	1255 S Tyler Rd.		
14 + 521.000	Eberzol	14 + 521.000	110.800	RT	231' S of S BOC, 383' E of W Property Line	0.914	405.027	405.027	0.000	11429 W Kellogg		
17 + 171.000	CarStar	17 + 171.000	39.970	RT	17.9' S of S BOC, 129' E of W Entrance Centerline	6.700	403.920	403.920	0.000	8923 W Kellogg		
04 + 914.100	Kicks 66	04 + 914.100	27.400	LT	28.9' E of E BOC, 28.2' S of Entrance Centerline	19.400	404.480	404.480	0.000	1254 S Tyler Rd.		

RECORD DRAWING
Larry D. Powell 10-18-04

1	Revisions	By	Date
CITY OF WICHITA, KANSAS			
INSPECTOR'S SKETCHES			
SEDGWICK COUNTY			
Professional Engineering Consultants, P.A. 303 S. TOPEKA • WICHITA, KANSAS 67202 316-262-2691 • FAX 316-262-9003			
Designed by	KJW	Checked by	
Drawn by		Date	FEBRUARY, 2004
		Job No.	97362