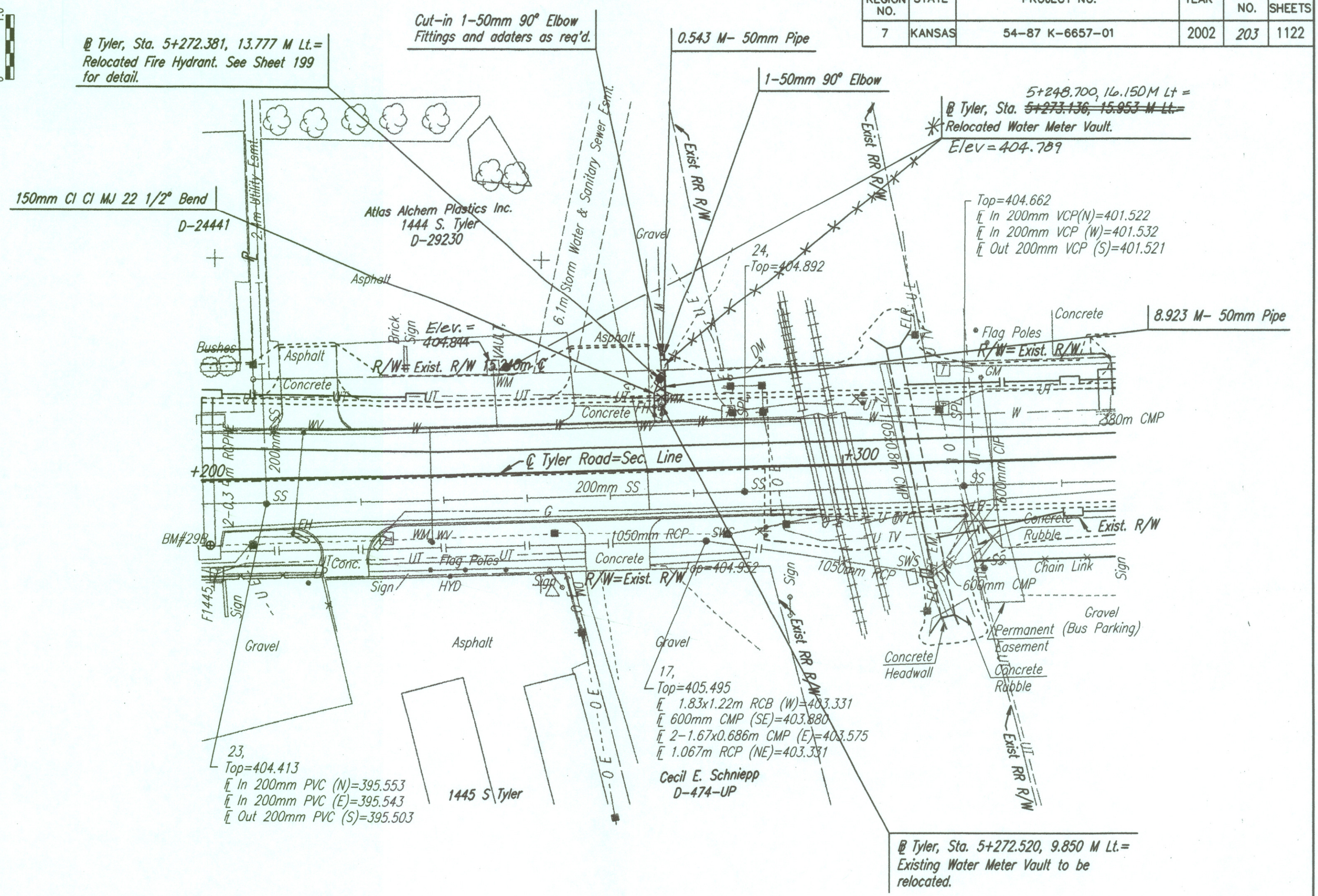
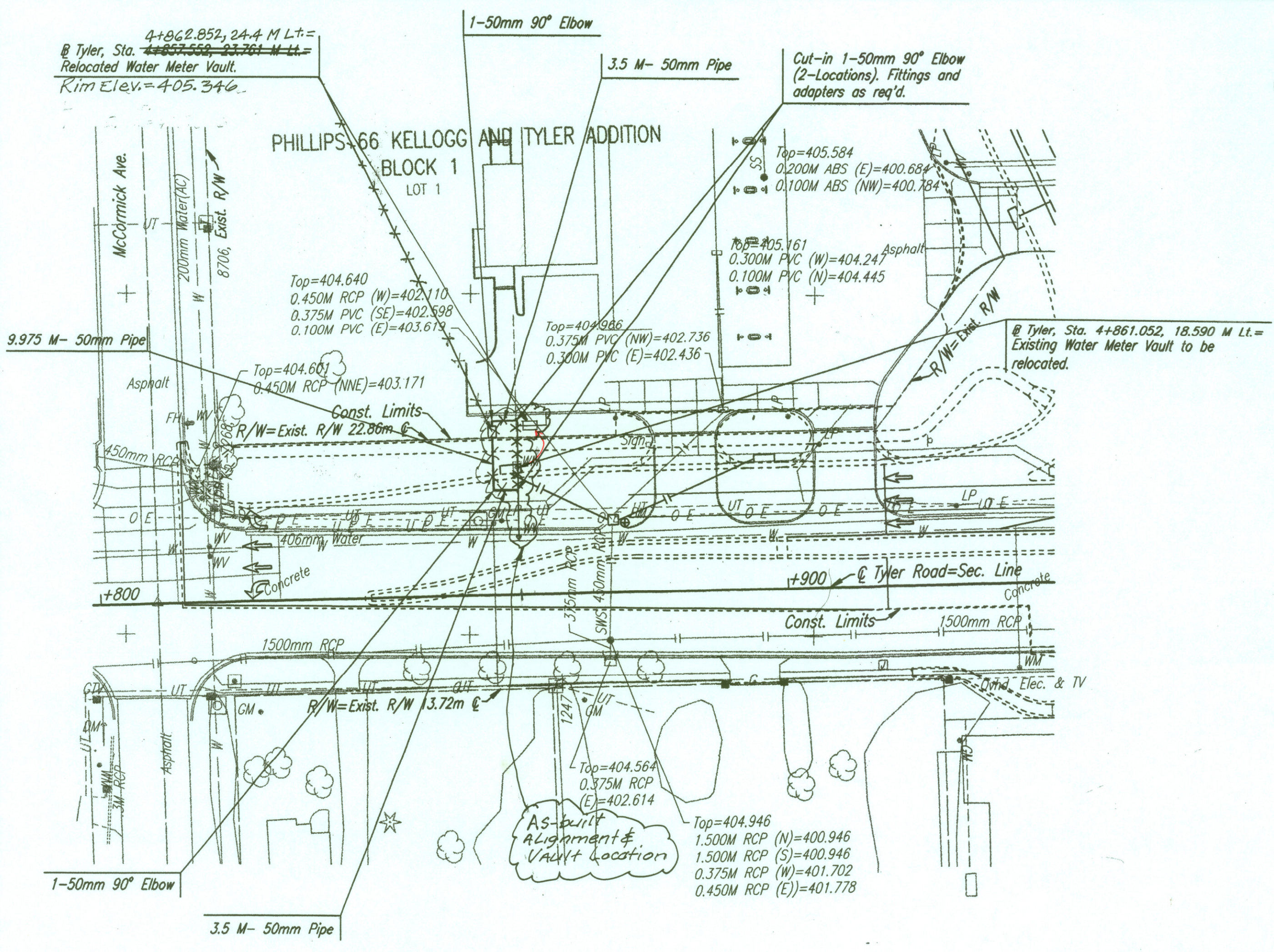
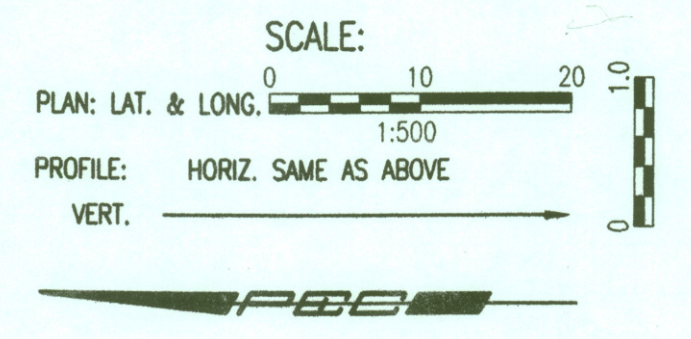
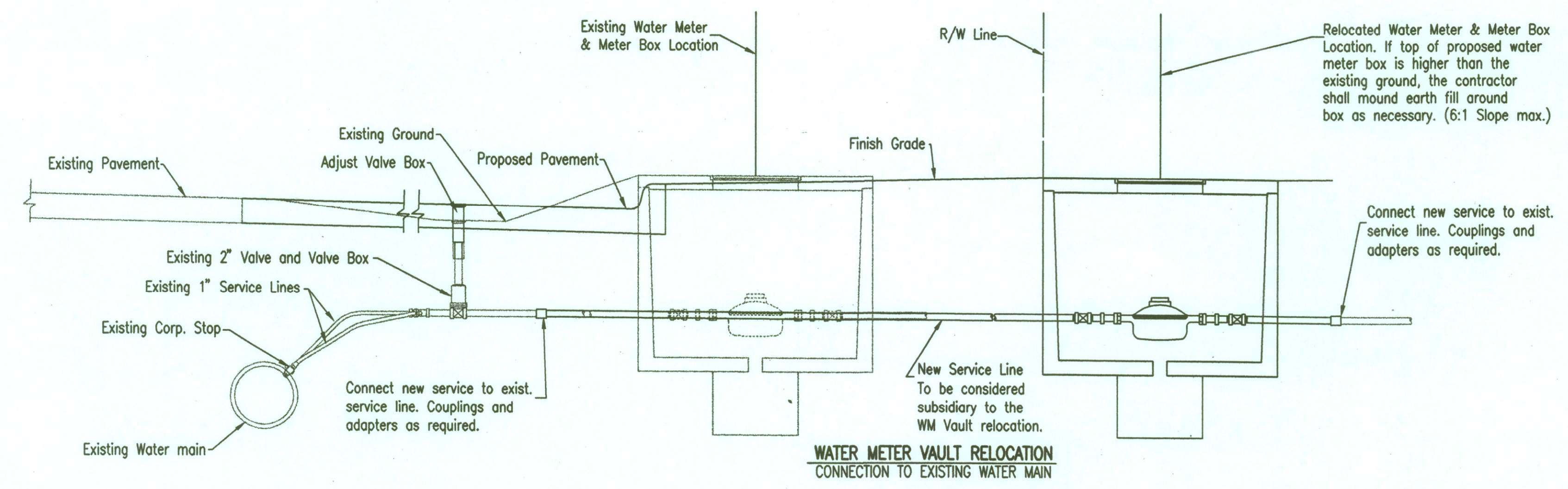


|                 |        |                 |      |           |              |
|-----------------|--------|-----------------|------|-----------|--------------|
| FHWA REGION NO. | STATE  | PROJECT NO.     | YEAR | SHEET NO. | TOTAL SHEETS |
| 7               | KANSAS | 54-87 K-6657-01 | 2002 | 203       | 1122         |



\*Spartek owner requested 50mm Service relocate to be placed in current as-built location. This work was NOT Done as part of this contract. Spartek paid for this Non-Plan Placement which was done by crews hired by Spartek. The C.O.P. installed a Tapping Sleeve on 16" Main for Spartek hired crew.



See Inspector's Sketches Sheet No. 200A & 200B

**RECORD DRAWING**  
 Larry D. Powell 10-18-04

| EXISTING METER VAULT LOCATION |            |  | RELOCATED METER VAULT LOCATION |            |  |                                 |       |                           |                   |
|-------------------------------|------------|--|--------------------------------|------------|--|---------------------------------|-------|---------------------------|-------------------|
| STATION                       | OFFSET     | ENGLISH UNITS DESCRIPTION                              | STATION                        | OFFSET     | ENGLISH UNITS DESCRIPTION                                      | DISTANCE FROM MAIN TO VAULT (M) | (FT.) | TOP METER VAULT ELEVATION | ADDRESS           |
| Tyler Rd.                     |            |  | 4+862.852                      | 24.4 Lt.   | 167'   | 16.6 M                          | 54.5' | 405.346                   |                   |
| 4+861.052                     | 18.590 Lt. | 173' S. @ McCormick, 14' W. of E. R/W Tyler            | 4+867.552                      | 23.781 Lt. | 161.5' S. @ McCormick, 78' E. @ Tyler Rd.                      | 15.866 M                        | 52'   | 405.028                   | 1254 S. Tyler Rd. |
| 5+272.520                     | 9.850 Lt.  | 35' N. of N. R/W Cen. Ks. Rwy., 18' W. of E. R/W Tyler | 5+273.136                      | 15.953 Lt. | 8' S. of S. drive, 2.5' E. of E. R/W Tyler Rd.                 | 8.738 M                         | 28.7' | 404.835                   | 1444 S. Tyler Rd. |
|                               |            |  | 5+248.6                        | 16.3 Lt.   | 51.5' N. of S. Entrance @ 14.7' E. of E. Curbline of Tyler Rd. | 8.40 M                          | 27.6' | 404.789                   |                   |

|  |           |            |             |
|--|-----------|------------|-------------|
| 1  |           |            |             |
| No.  | Revisions | By         | Date        |
| CITY OF WICHITA, KANSAS  |           |            |             |
| SERVICE SCHEDULE   |           |            |             |
| SEDGWICK COUNTY  |           |            |             |
| Professional Engineering Consultants, P.A.<br>303 S. TOPEKA • WICHITA, KANSAS 67202<br>316-262-2691 • FAX 316-262-3003 |           |            |             |
| Designed by  | KJW       | Checked by |             |
| Drawn by   | TDS, JGA  | Date       | APRIL, 2002 |
|  |           | Job No.    | 97362       |

DSNR: KJW OPER: IDS SCALE: 1=0.50  
 C:\1997\97362\007\servble2 04-12-2002 11:00:05 am