

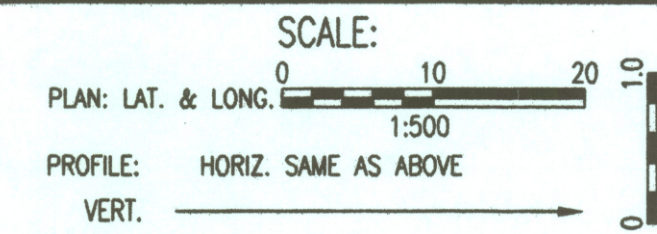
@ US-54, Sta. 13+976.747, 57.685 M Lt. =  
 WL 1, Sta. 0+000.000 =  
 Exist. 406mm Anchoed Valve  
 Remove 406mm Cap & Begin New  
 Water Main Installation.

@ US-54, Sta. 13+999.443, 57.700 M Lt. =  
 WL 1, Sta. 0+022.667  
 1- Fire Hydrant Assembly (Mueller A-421 JTC  
 L= 2'-7" x 4'-1" 4" Centurion OL  
 Top Valve Box El.= 406.324  
 FH Bury Line El.= 406.329-406.207

See Inspector's Sketches  
 Sheet No. 200A

@ US-54, Sta. 14+003.071, 57.342 M Lt. =  
 WL 1, Sta. 0+026.326  
 1- 406mm CI CL MJ 45° Bend  
 Defl. = 45°00'00"

@ US-54, Sta. 14+014.968, 45.132 M Lt. =  
 WL 1, Sta. 0+043.374  
 1- 406mm CI CL MJ 45° Bend  
 Defl. = 45°44'46"



| FHWA REGION NO. | STATE  | PROJECT NO.     | YEAR | SHEET NO. | TOTAL SHEETS |
|-----------------|--------|-----------------|------|-----------|--------------|
| 7               | KANSAS | 54-87 K-6657-01 | 2002 | 206       | 1122         |

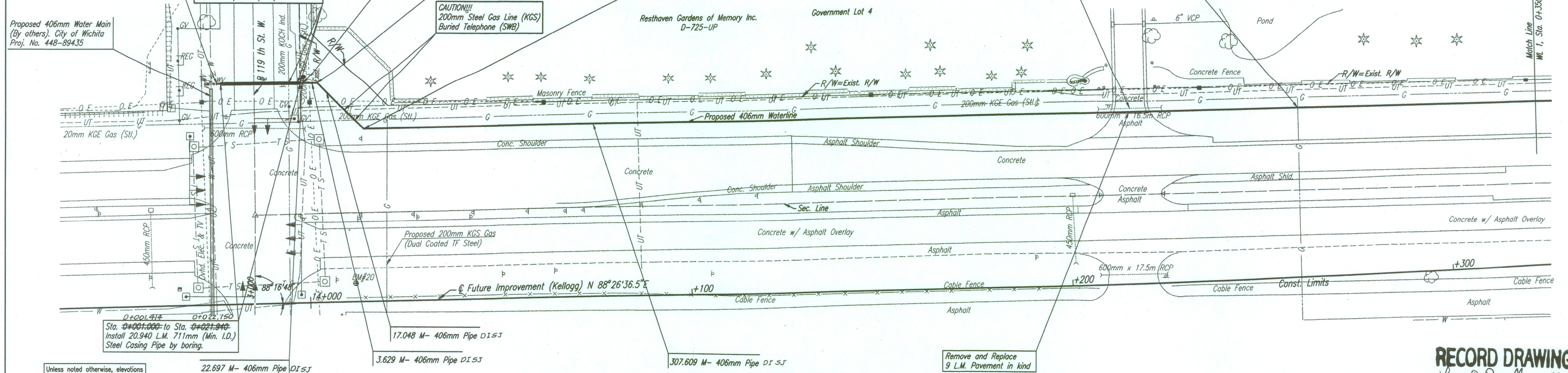
Proposed 406mm Water Main  
 (By others). City of Wichita  
 Proj. No. 448-89435

CAUTION!!!  
 200mm Ind. Pipeline (Koch)  
 200mm Steel Gas Line (KGS)  
 Buried Telephone (SWB)

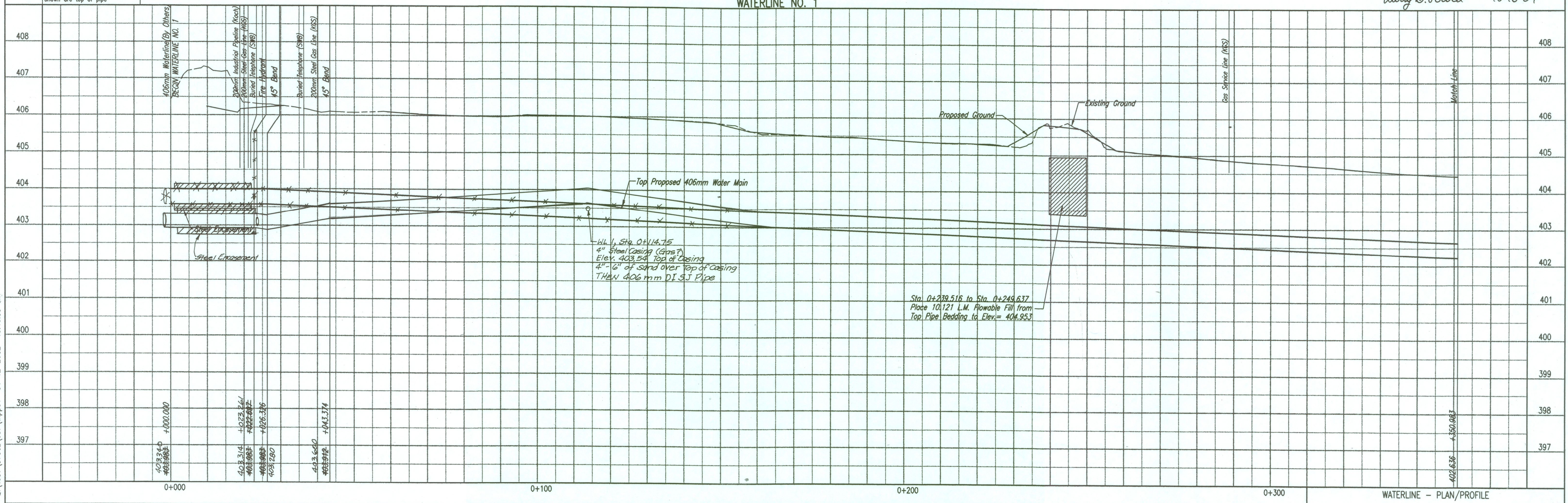
CAUTION!!!  
 200mm Steel Gas Line (KGS)  
 Buried Telephone (SWB)

Remove and reset  
 600mm RCP as req'd.

CAUTION!!!  
 mm Steel Gas Line (KGS)



**RECORD DRAWING**  
 Larry D. Powell 10-18-04



DSNR: KIW OPER: IDS SCALE: 1"=0.50  
 0:\1997\97362\007\wpp01 04-12-2002 10:46:55 am