

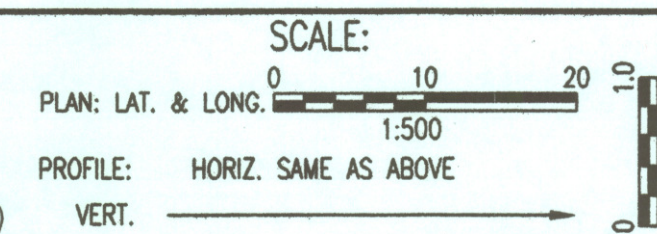
@ US-54, Sta. 14+696.372, 30.921 M Lt. =  
 WL 1, Sta. 0+723.388  
 1- 406mm CI CL MJ 22 1/2° Bend  
 Defl. = 22° 30' 00"

**CAUTION !!!**  
 Proposed 0.55 M<sup>2</sup> RCPHE  
 Storm Sewer

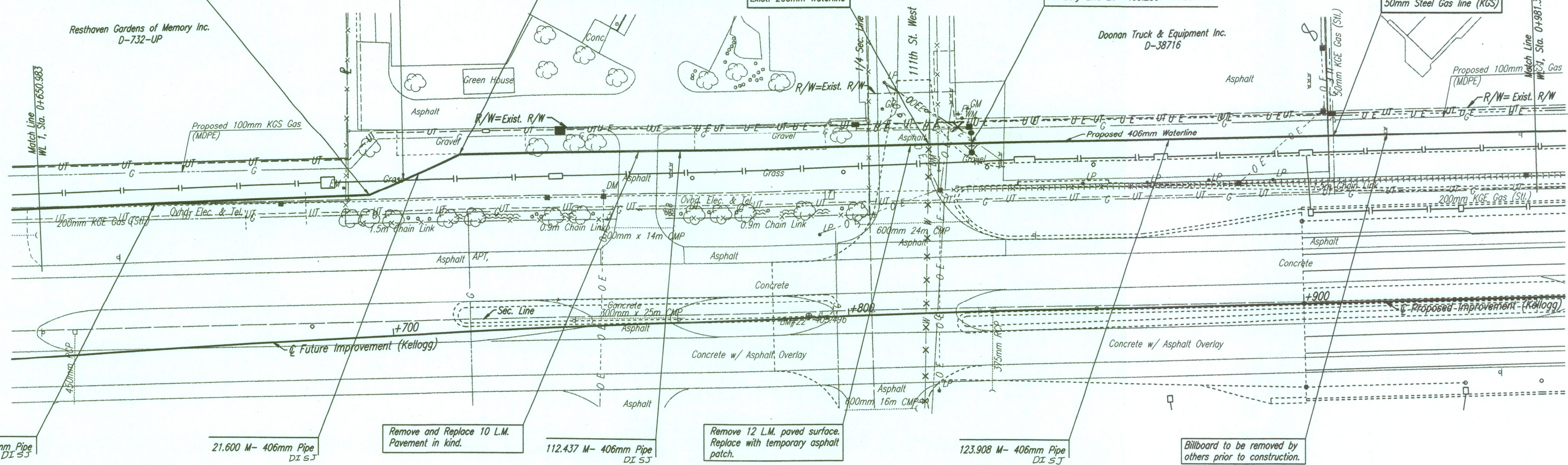
@ US-54, Sta. 14+716.424, 38.592 M Lt. =  
 WL 1, Sta. 0+744.988  
 1- 406mm CI CL MJ 22 1/2° Bend  
 Defl. = 22° 29' 59"

**CAUTION !!!**  
 Exist. 200mm Waterline

@ US-54, Sta. 14+828.008, 36.743 M Lt. =  
 WL 1, Sta. 0+857.425  
 1- Fire Hydrant Assembly (Mueller A-421 ITC  
 L = 1.3 M 4 1/2" Centurion OL 3-Way)  
 Top Valve Box El. = 405.245  
 FH Bury Line El. = ~~405.236~~ 405.302



FHWA REGION NO. 7	STATE KANSAS	PROJECT NO. 54-87 K-6657-01	YEAR 2002	SHEET NO. 208	TOTAL SHEETS 1122
-------------------	--------------	-----------------------------	-----------	---------------	-------------------



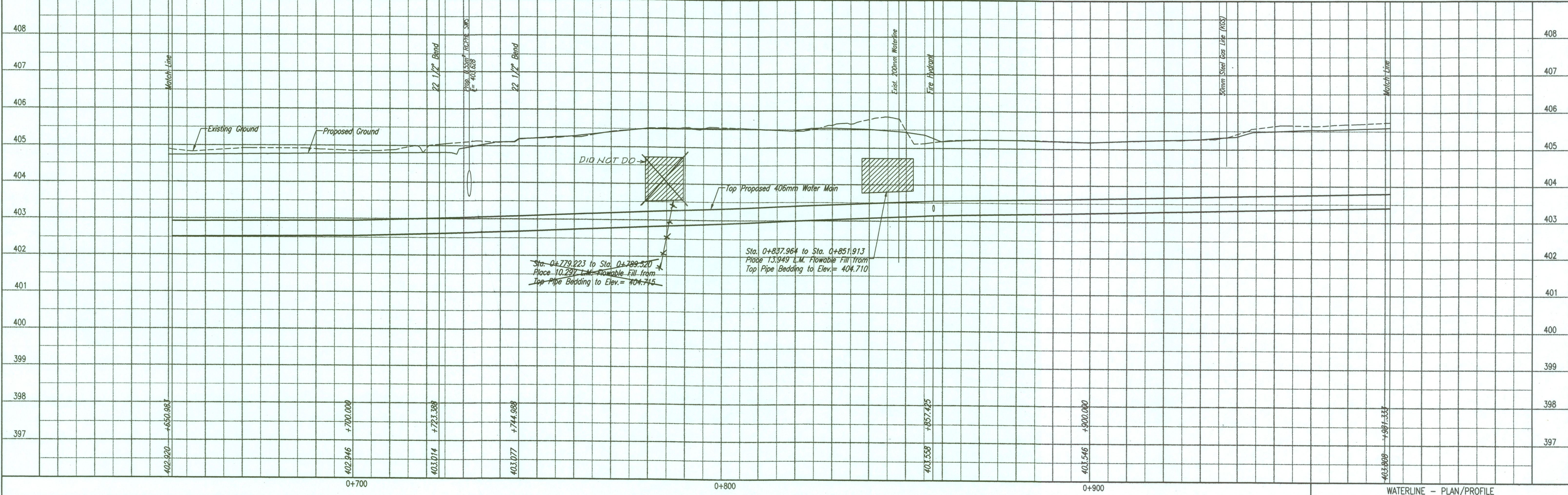
See Inspectors Sketches  
 Sheet No. 200A

**RECORD DRAWING**  
 Larry D. Powell 10-18-04

Unless noted otherwise, elevations shown are top of pipe

**WATERLINE NO. 1**

X - Denotes existing waterline to be abandoned.  
 See Sheet No. 196 and 197.



DSWR: KJM OPER: IDS SCALE: 1:0.50  
 Q:\1997\97362\007\wpp03 04-12-2002 11:04:30 am

WATERLINE - PLAN/PROFILE