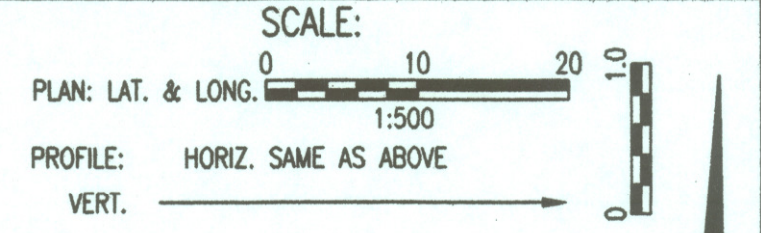


FHWA REGION NO.	STATE	PROJECT NO.	YEAR	SHEET NO.	TOTAL SHEETS
7	KANSAS	54-87 K-6657-01	2002	209	1122

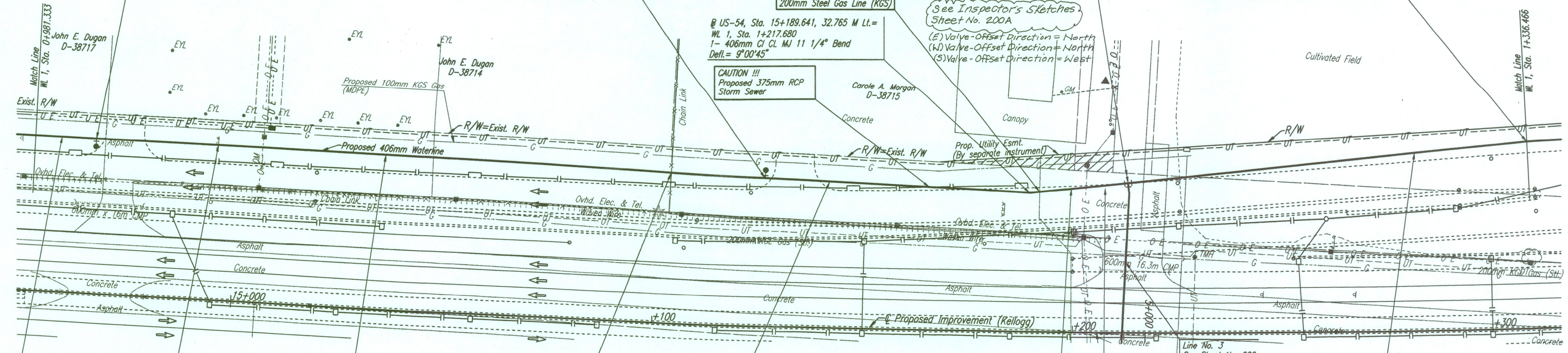


@ US-54, Sta. 14+966.173, 36.672 M Lt. =  
 WL 1, Sta. 0+995.785  
 1- Fire Hydrant Assembly (Mueller A-421  
 L= 1.3 M 4 1/2" Centurion OL 3-Hwy)  
 Top Valve Box El.= 405.673  
 FH Bury Line El.= ~~405.673~~ 405.712

@ US-54, Sta. 15+126.184, 35.130 M Lt. =  
 WL 1, Sta. 1+154.762  
 1- Fire Hydrant Assembly (Mueller A-421) ITC  
 L= 1.3 M 4 1/2" Centurion OL 3-Hwy)  
 Top Valve Box El.= 406.515  
 FH Bury Line El.= ~~406.605~~ 406.648

@ US-54, Sta. 15+213.291, 35.304 M Lt. =  
 @ Lark, Sta. 4+964.957, 5.887 M Rt. =  
 WL 1, Sta. 1+241.249 =  
 WL 3, Sta. 0+000.000  
 1- 406mm x 300mm CI CL MJ Tee  
 1- 300mm Anchored Valve Assembly (S)  
 (MJ Butterfly Valve) (Pratt made for Mueller) (B 9211-29)  
 2- 406mm Valve Assemblies (E&W)  
 (MJ Butterfly Valves) (Pratt made for Mueller) (B 9211-23)  
 Top Valve Box El.= 406.359

@ US-54, Sta. 15+309.137, 44.033 M Lt. =  
 WL 1, Sta. 1+336.466  
 Defl.= 3°29'52"



14.452 M- 406mm Pipe DISJ

Billboard to be removed by others prior to construction.

158.977 M- 406mm Pipe DISJ

Fence to be removed by others prior to construction.

62.918 M- 406mm Pipe DISJ

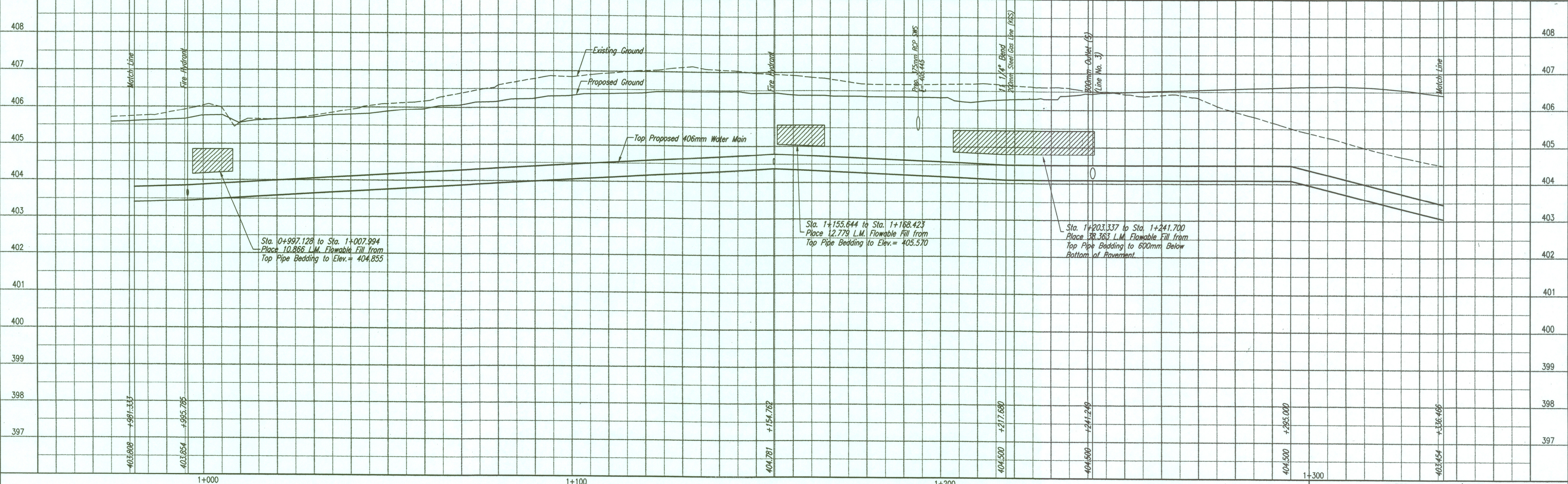
23.569 M- 406mm Pipe DISJ

95.217 M- 406mm Pipe DISJ

Unless noted otherwise, elevations shown are top of pipe

WATERLINE NO. 1

RECORD DRAWING  
 Larry D. Powell 10-18-04



DSNR: K/W OPER: IDS SCALE: 1"=0.50'  
 Q:\1997\97362\007\wrp04 04-12-2002 11:46:47 am