

@ US-54, Sta. 16+755.612, 37.154 M Rt. =  
 WL 2, Sta. 0+424.701  
 1- 406mm CI CL MJ 22 1/2° Bend  
 Defl. = 23°49'38"

@ US-54, Sta. 16+810.452, 37.756 M Rt. =  
 WL 2, Sta. 0+479.544  
 Defl. = 1°22'37"

@ US-54, Sta. 16+839.571, 37.376 M Rt. =  
 WL 2, Sta. 0+508.665  
 Defl. = 2°45'15"

@ US-54, Sta. 16+868.638, 35.597 M Rt. =  
 WL 2, Sta. 0+537.787  
 Defl. = 0°09'25"

@ US-54, Sta. 16+894.168, 33.965 M Rt. =  
 WL 2, Sta. 0+563.369  
 Defl. = 2°26'22"

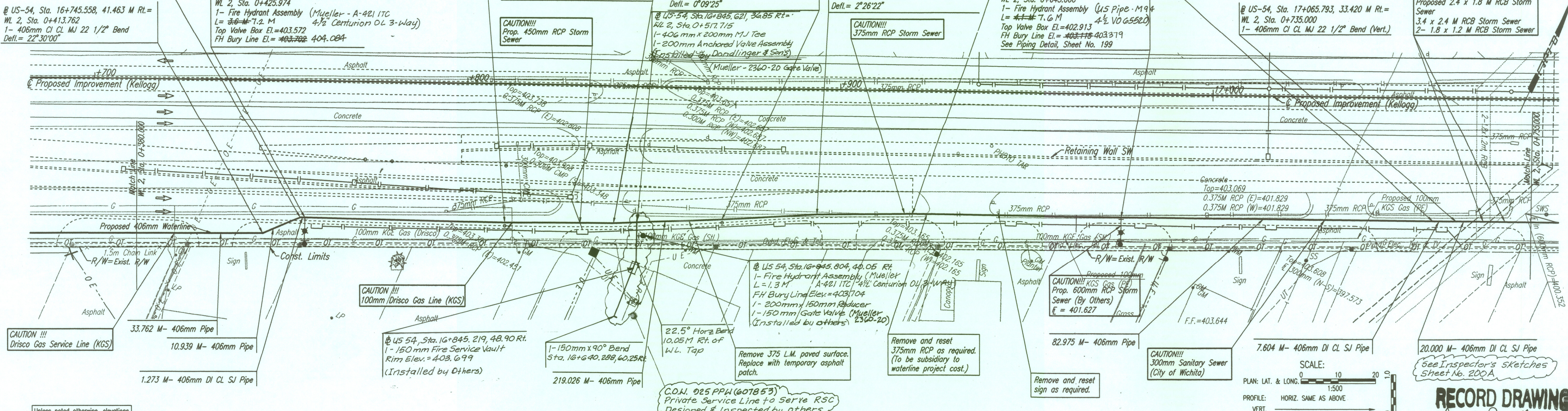
@ US-54, Sta. 16+919.745, 33.420 M Rt. =  
 WL 2, Sta. 0+588.952  
 Defl. = 1°13'11"

@ US-54, Sta. 17+058.768, 33.420 M Rt. =  
 WL 2, Sta. 0+727.975  
 1- 406mm CI CL MJ 22 1/2° Bend (Vert.)

FHWA REGION NO.	STATE	PROJECT NO.	YEAR	SHEET NO.	TOTAL SHEETS
7	KANSAS	54-B7-K-6657-01	2002	215	1122

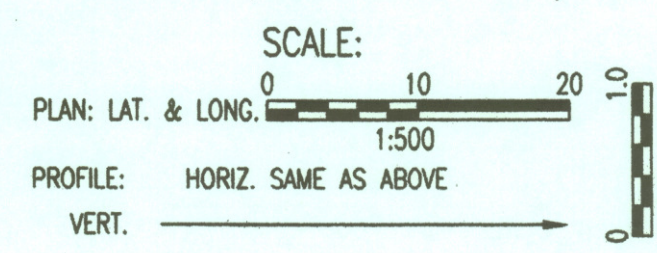
@ US-54, Sta. 17+065.793, 33.420 M Rt. =  
 WL 2, Sta. 0+735.000  
 1- 406mm CI CL MJ 22 1/2° Bend (Vert.)

**CAUTION !!!**  
 Proposed 2.4 x 1.8 M RCB Storm Sewer  
 3.4 x 2.4 M RCB Storm Sewer  
 2- 1.8 x 1.2 M RCB Storm Sewer

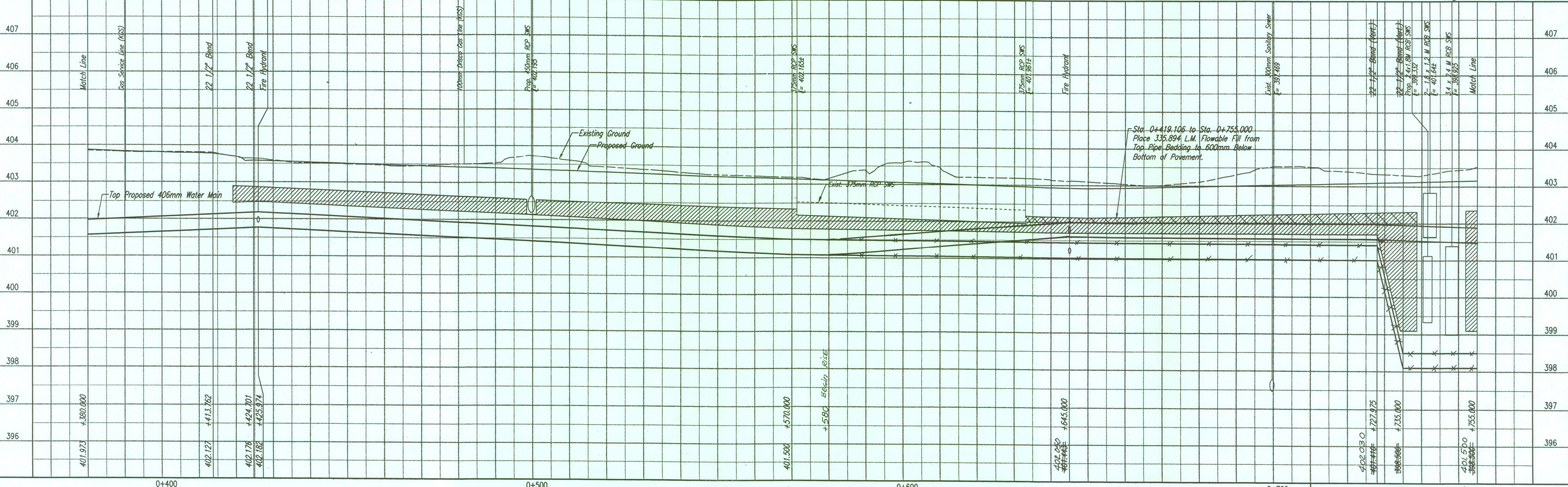


Unless noted otherwise, elevations shown are top of pipe

C.O.N. 025 PPH (607853)  
 Private Service Line to serve RSC  
 Designed & Inspected by others  
**WATERLINE NO. 2**



**RECORD DRAWING**  
 Larry D. Powell 10-18-04



Sta. 0+419.106 to Sta. 0+758.000  
 Place 335.894 L.M. Flowable Fill from  
 Top Pipe Bedding to 600mm Below  
 Bottom of Pavement.

DSNR: K/W OPER: IDS SCALE: 1=0.50  
 G:\1997\91362\00\Wpp13 04-12-2002 11:12:20 am