

@ Kellogg, Sta. 17+855.258, 38.945 M Rt. =
 WL 2, Sta. 1+522.767
 Defl. = 2°10'22"

@ Kellogg, Sta. 17+937.520, 36.635 M Rt. =
 WL 2, Sta. 1+602.980
 Defl. = 0°53'45"

@ Kellogg, Sta. 17+970.011, 35.003 M Rt. =
 WL 2, Sta. 1+634.736
 Defl. = 2°41'16"

@ Kellogg, Sta. 18+025.609, 30.601 M Rt. =
 WL 2, Sta. 1+689.293
 Defl. = 3°08'09"

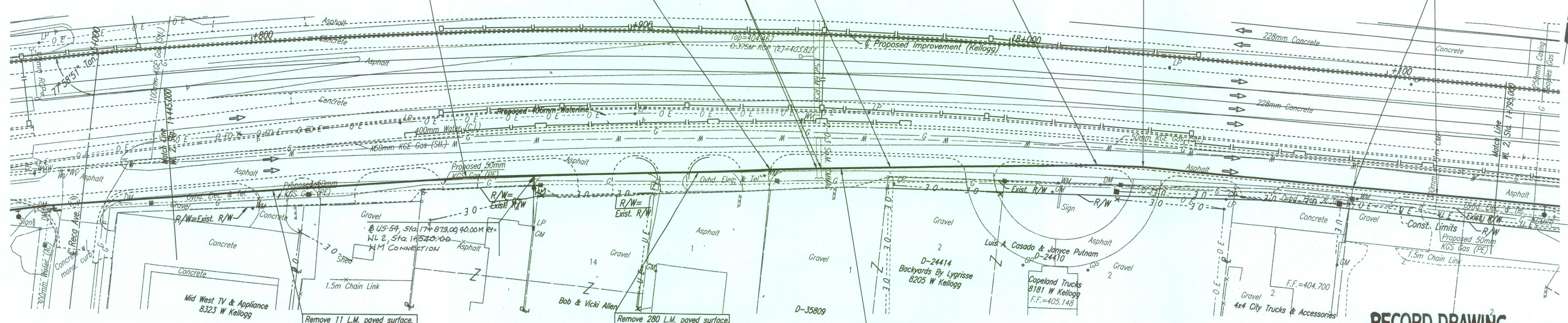
@ Kellogg, Sta. 18+038.084, 30.010 M Rt. =
 WL 2, Sta. 1+701.531
 Defl. = 3°08'09"

SCALE:
 PLAN: LAT. & LONG. 1:500
 PROFILE: HORIZ. SAME AS ABOVE
 VERT. 1:500

FHWA REGION NO.	STATE	PROJECT NO.	YEAR	SHEET NO.	TOTAL SHEETS
7	KANSAS	54-87 K-6657-01	2002	218	1122

CAUTION !!!
 0.3 sq. M CMMAC

CAUTION !!!
 Gas Service Line (KGS)
 300mm x 11M CMP



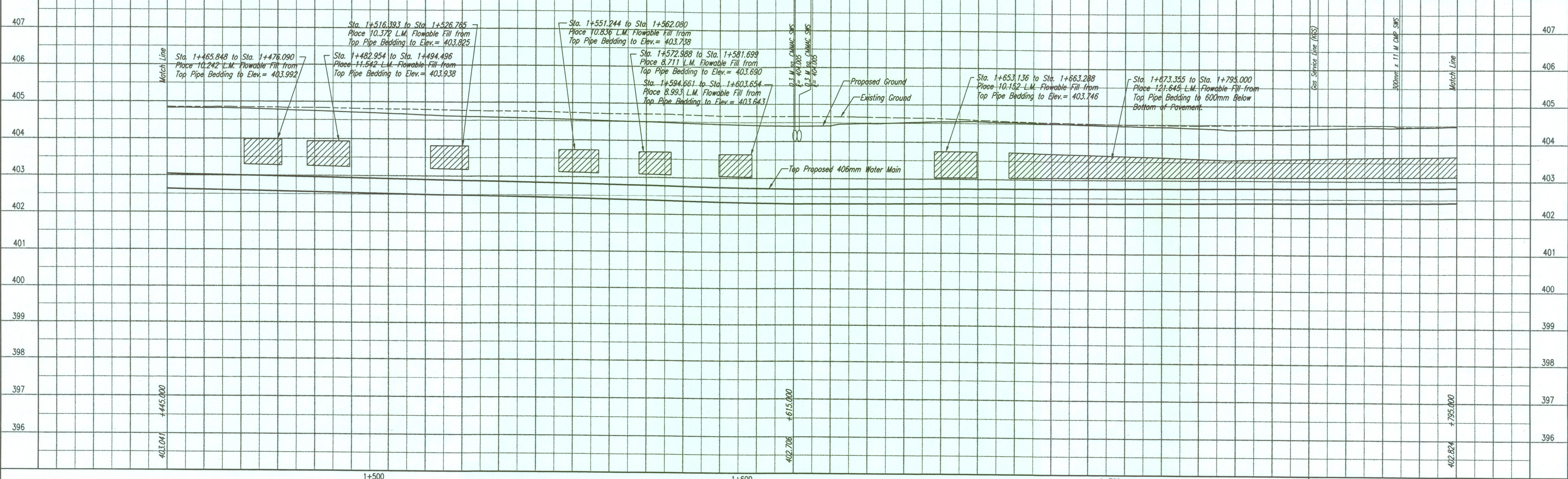
Unless noted otherwise, elevations shown are top of pipe

Remove 11 L.M. paved surface. Replace with temporary asphalt patch.

Remove 280 L.M. paved surface. Replace with temporary asphalt patch.

RECORD DRAWING
 Larry D. Powell 10-18-04

WATERLINE NO. 2



WATERLINE - PLAN/PROFILE

DSNR: KJW OPER: IDS SCALE: 1=0.50
 Q:\1997\97362\007\wpp16 04-12-2002 11:14:49 am