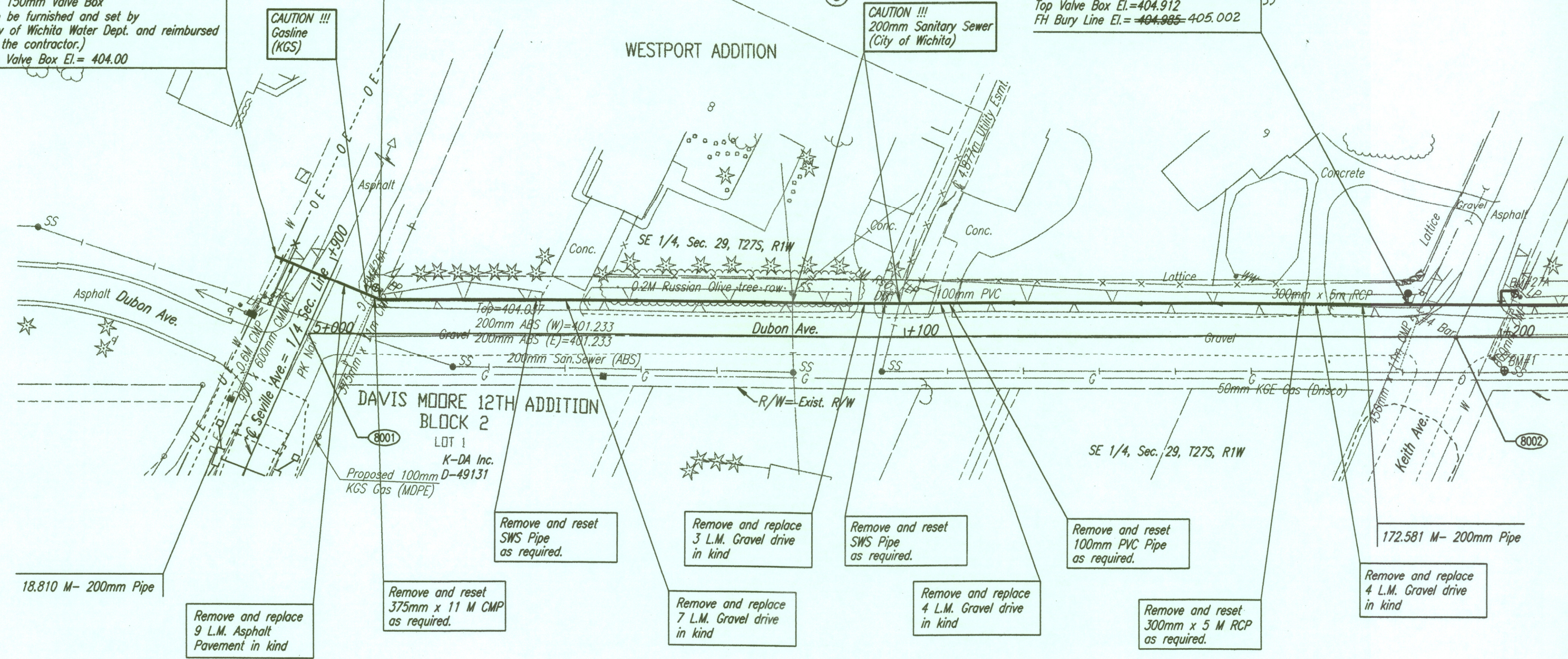


@ Dubon, Sta. 4+994.548, 12.965 M Lt.=
 WL 4, Sta. 0+000.000
 Existing 300mm AC Water Main
 1- 300mm x 200mm Tapping Sleeve
 1- 200mm Tapping Valve
 1- 150mm Valve Box
 (To be furnished and set by
 City of Wichita Water Dept. and reimbursed
 by the contractor.)
 Top Valve Box El.= 404.00

@ Dubon, Sta. 5+011.915, 5.740 M Lt.=
 WL 4, Sta. 0+018.810
 1- CI CL MJ 22 1/2" Bend
 Defl.= 22° 30' 00"

@ Dubon, Sta. 5+184.496, 5.468 M Lt.=
 WL 4, Sta. 0+191.391
 1- Fire Hydrant Assembly (Mueller-A-42 ITC
 L= 1.3 M 4" Centurion DL 3-way)
 Top Valve Box El.= 404.912
 FH Bury Line El.= ~~404.995~~ 405.002

SCALE:		FHWA REGION NO. 7	STATE KANSAS	PROJECT NO.	YEAR 2001	SHEET NO. 221	TOTAL SHEETS
PLAN: LAT. & LONG.	1:500						
PROFILE: HORIZ. SAME AS ABOVE							
VERT.							



See Inspector's Sketches
 Sheet 200A & 200B

9999 = Control Point

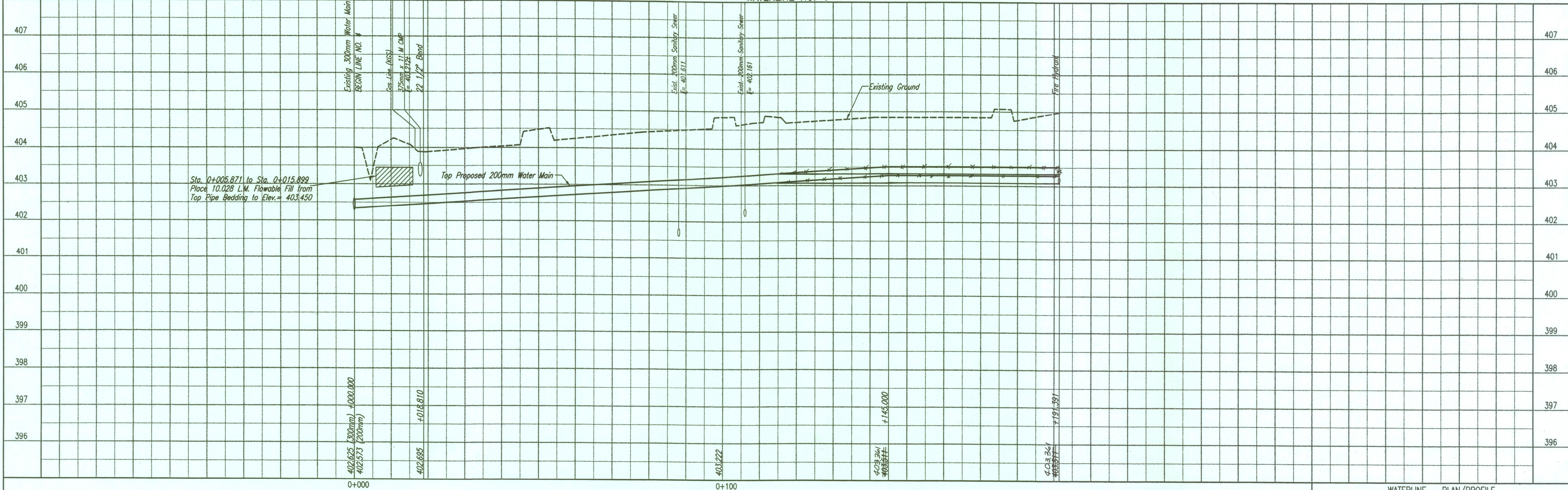
CP# 8001
 N=511,726.0592, E=492,411.0363
 PK Nail @ Seville (Asph.) @ Dubon St. (Gravl.)
 9.700 M NW, Top Center Fire Hydrant
 14.040 M NE, RR Spike W. face pole
 17.100 M SW, Center of power pole

CP# 8002
 N=511,809.5545, E=492,584.5101
 #4 Bar @ Intersection, Dubon & Keith Sts.
 9.870 M SE, "N" N. rim Sewer Manhole
 12.700 M NE, Center of light pole
 9.270 M NW, Center of street sign

Unless noted otherwise, elevations
 shown are top of pipe

RECORD DRAWING
 Larry D. Powell 10-18-04

WATERLINE NO. 4



DSNR: KJW OPER: IDS SCALE: 1=0.50
 Q:\1997\97362\007\wpp08 04-12-2002 11:17:25 am