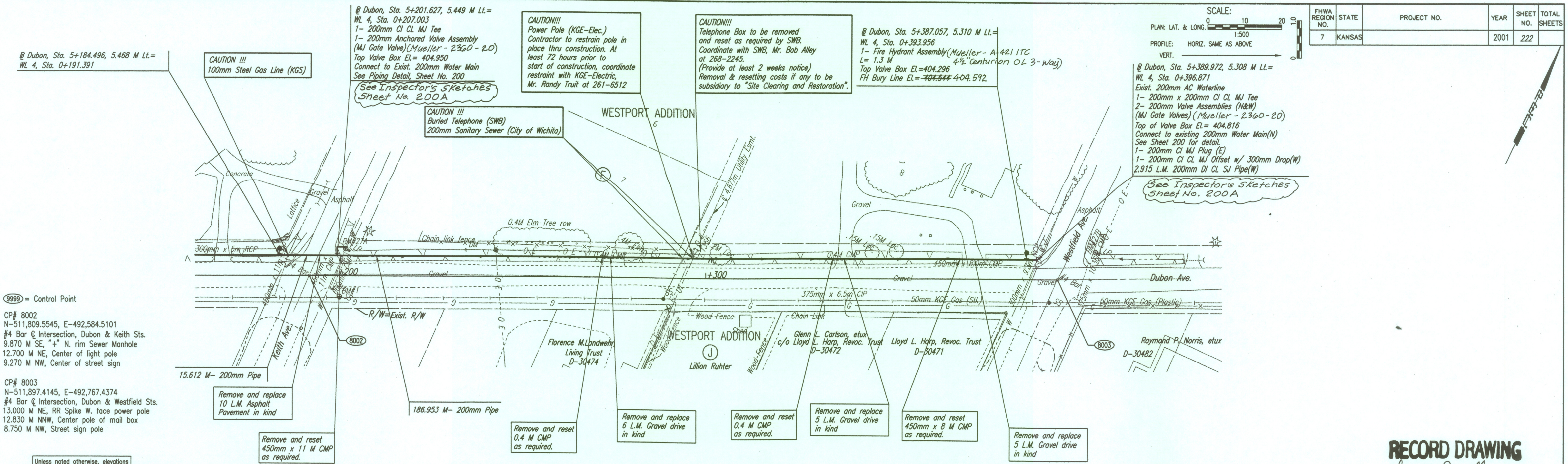


FHWA REGION NO.	STATE	PROJECT NO.	YEAR	SHEET NO.	TOTAL SHEETS
7	KANSAS		2001	222	

SCALE:
 PLAN: LAT. & LONG. 1" = 100'
 PROFILE: HORIZ. SAME AS ABOVE
 VERT. 1" = 10'



9999 = Control Point
 CP# 8002
 N-511,809.5545, E-492,584.5101
 #4 Bar @ Intersection, Dubon & Keith Sts.
 9.870 M SE, "+" N. rim Sewer Manhole
 12.700 M NE, Center of light pole
 9.270 M NW, Center of street sign
 CP# 8003
 N-511,897.4145, E-492,767.4374
 #4 Bar @ Intersection, Dubon & Westfield Sts.
 13.000 M NE, RR Spike W. face power pole
 12.830 M NNW, Center pole of mail box
 8.750 M NW, Street sign pole

@ Dubon, Sta. 5+389.972, 5.308 M Lt.=
 WL 4, Sta. 0+396.871
 Exist. 200mm AC Waterline
 1- 200mm x 200mm CI CL MJ Tee
 2- 200mm Valve Assemblies (N&W)
 (MJ Gate Valves) (Mueller - 2360-20)
 Top of Valve Box El.= 404.816
 Connect to existing 200mm Water Main(N)
 See Sheet 200 for detail.
 1- 200mm CI MJ Plug (E)
 1- 200mm CI CL MJ Offset w/ 300mm Drop(W)
 2,915 L.M. 200mm DI CL SJ Pipe(W)
 See Inspectors Sketches
 Sheet No. 200A

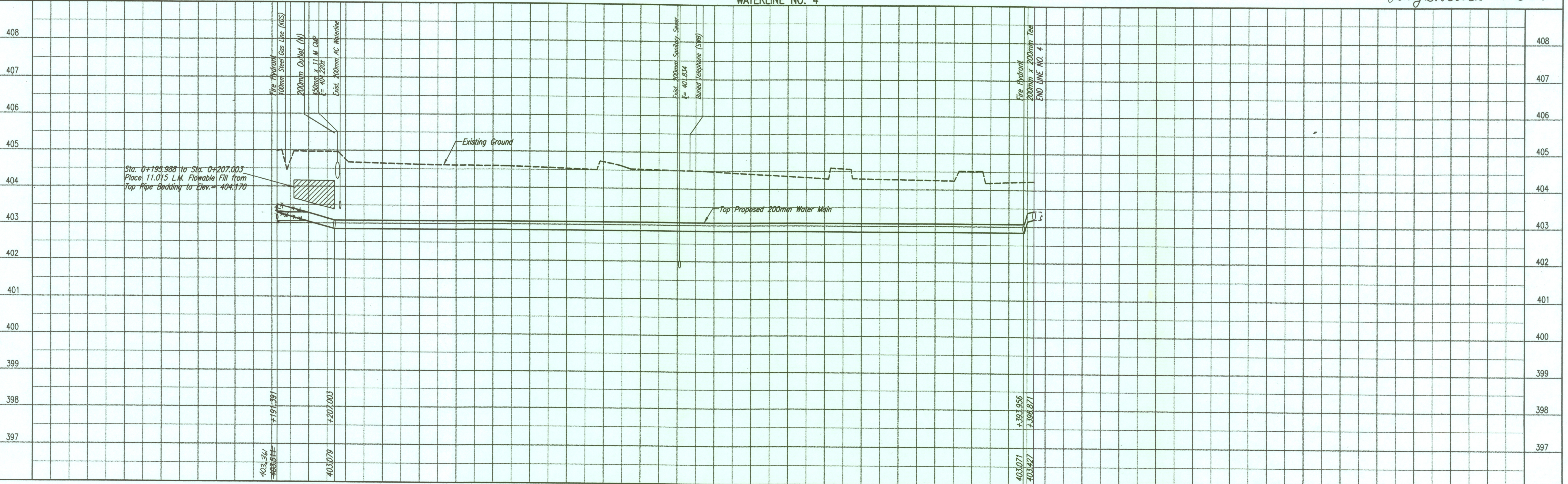
CAUTION!!!
 Power Pole (KGE-Elec.)
 Contractor to restrain pole in
 place thru construction. At
 least 72 hours prior to
 start of construction, coordinate
 restraint with KGE-Electric,
 Mr. Randy Truit at 261-6512

CAUTION!!!
 Telephone Box to be removed
 and reset as required by SWB.
 Coordinate with SWB, Mr. Bob Alley
 at 268-2245.
 (Provide at least 2 weeks notice)
 Removal & resetting costs if any to be
 subsidiary to "Site Clearing and Restoration".

@ Dubon, Sta. 5+387.057, 5.310 M Lt.=
 WL 4, Sta. 0+393.956
 1- Fire Hydrant Assembly (Mueller - A-421 ITC
 L= 1.3 M
 Top Valve Box El.= 404.296
 FH Bury Line El.= ~~404.544~~ 404.592

RECORD DRAWING
 Larry D. Powell 10-18-04

WATERLINE NO. 4



DSNR: KJW OPER: JDS SCALE: 1=0.50
 Q:\1997\97362\007\wlp09 04-12-2002 11:18:09 am