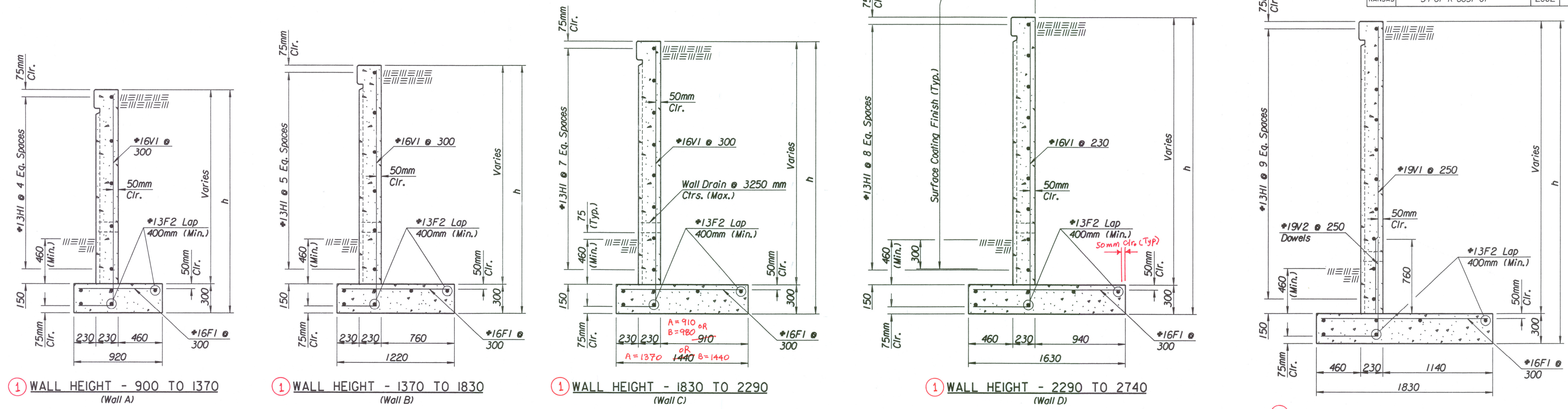


STATE	PROJECT NO.	YEAR	SHEET NO.	TOTAL SHEETS
KANSAS	54-87 K-6657-01	2002	238A	1122

DATE	
BY	
REFERENCES NOTED	
REFERENCES CHECKED	



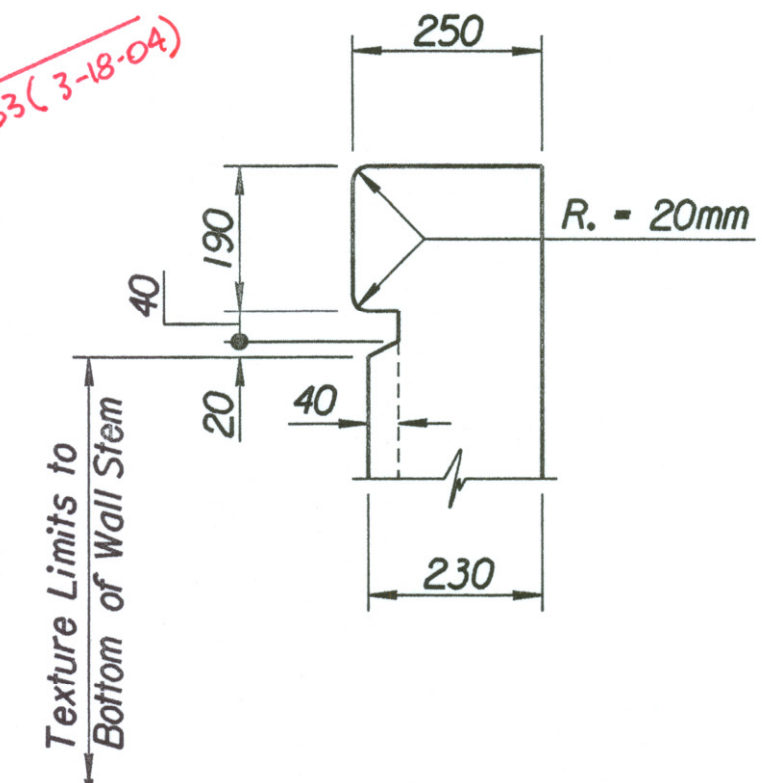
① WALL HEIGHT - 900 TO 1370 (Wall A)
 ① WALL HEIGHT - 1370 TO 1830 (Wall B)
 ① WALL HEIGHT - 1830 TO 2290 (Wall C)
 ① WALL HEIGHT - 2290 TO 2740 (Wall D)
 ① WALL HEIGHT - 2740 TO 3100 (Wall E)

Note:
 All Planter Wall ends terminating at the face of Retaining Wall shall be built according to the attached detail. Joint Sealant shall be Dymeric 511 as manufactured by Tremco or approved equal. Color shall match the color #20372 and will be installed in accordance with manufacturers recommended procedure. Material and application will be subsidiary to the bid item "Planter Walls".

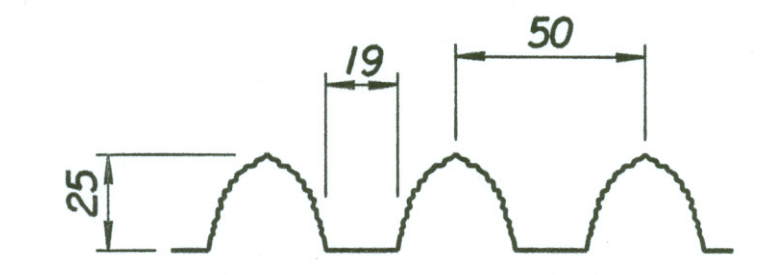
REVISED
 See RFI # 063 (3-18-04)

Note:
 All interior vertical surfaces of Planter Walls shall be coated with Enviroseal 20 as manufactured by Hydrozo or equivalent as approved by the Engineer. Application shall be in accordance with the manufacturers recommended procedure. Material and application will be subsidiary to the bid item "Planter Walls".

see submittal # 79.2.

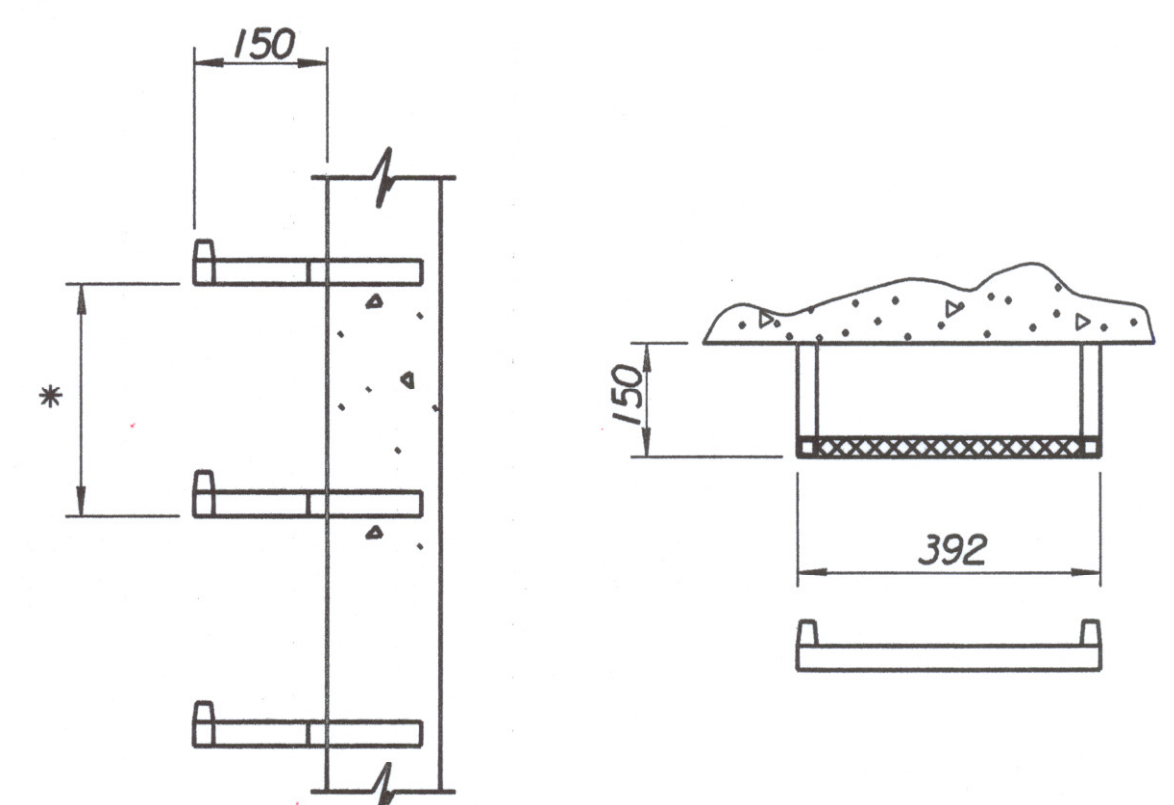


TYPICAL WALL TOP DETAIL



Typical Texture
 (*109 Fractured Fin by Scott System, Inc.)

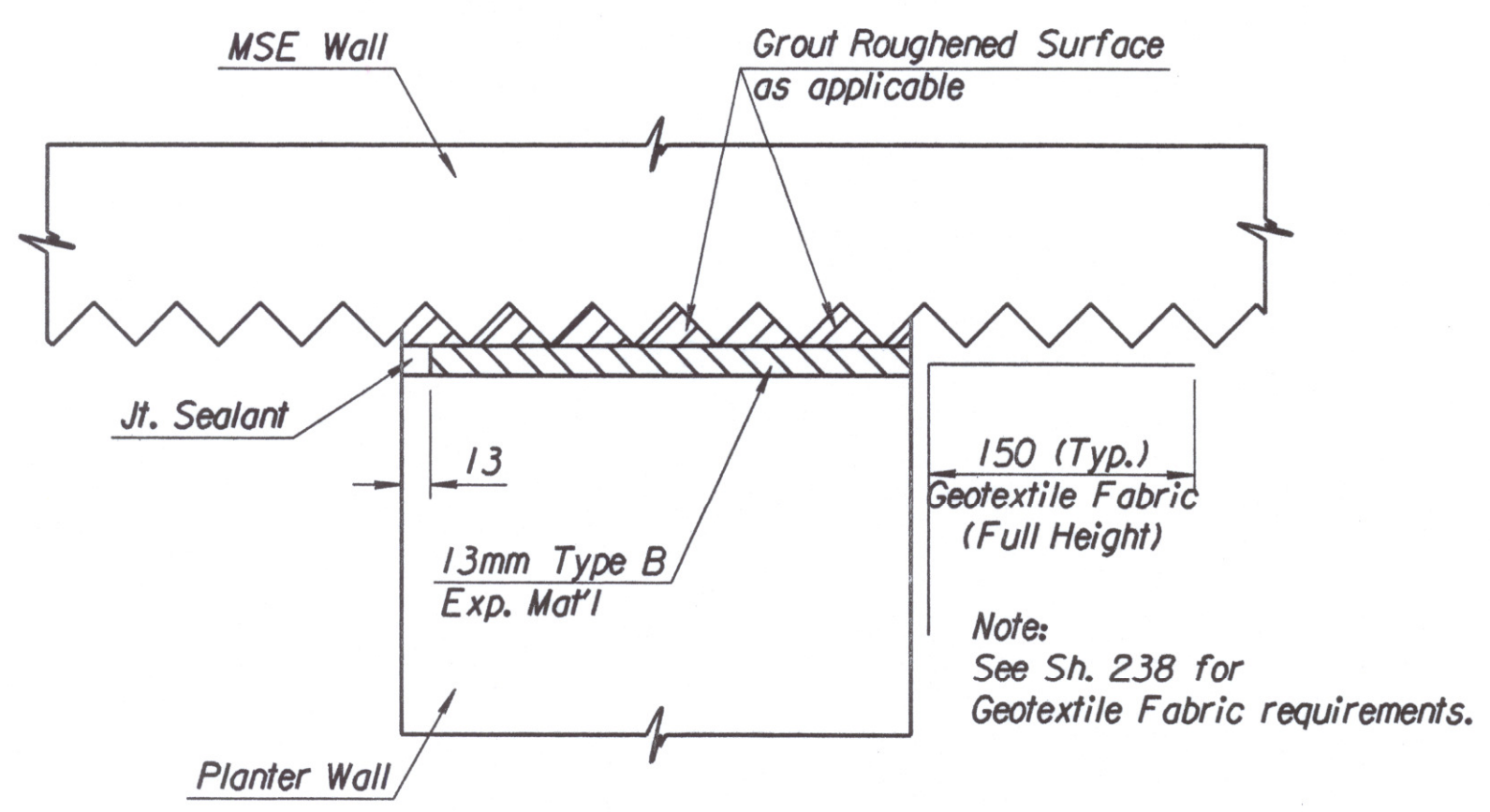
Note:
 Surface Coating Finish will be Federal 595B Color #20372 (Buckskin).
 Tamm's Color # 3686 (same color approved for MSE Walls).
 See General Note Sheet for Contraction and Expansion Joint Details. Contraction Joints will be spaced at 12 meter centers maximum with Expansion Joints spaced at 36 meters maximum.



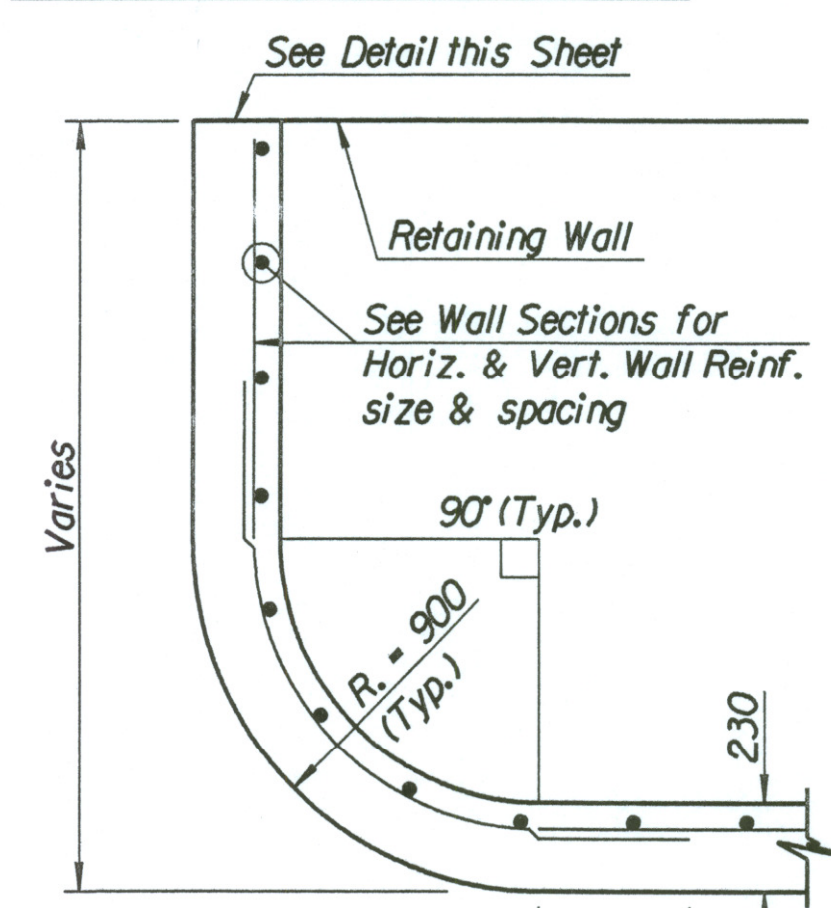
STEP DETAILS

* Steps shall be uniformly spaced. Spacing shall be 300 mm (Min.) and 420 mm (Max.). Steps shall be PS2-PF Manhole Steps as manufactured by M.A. Industries Inc., Kelly & Dividend Dr. Peachtree City, Ga.

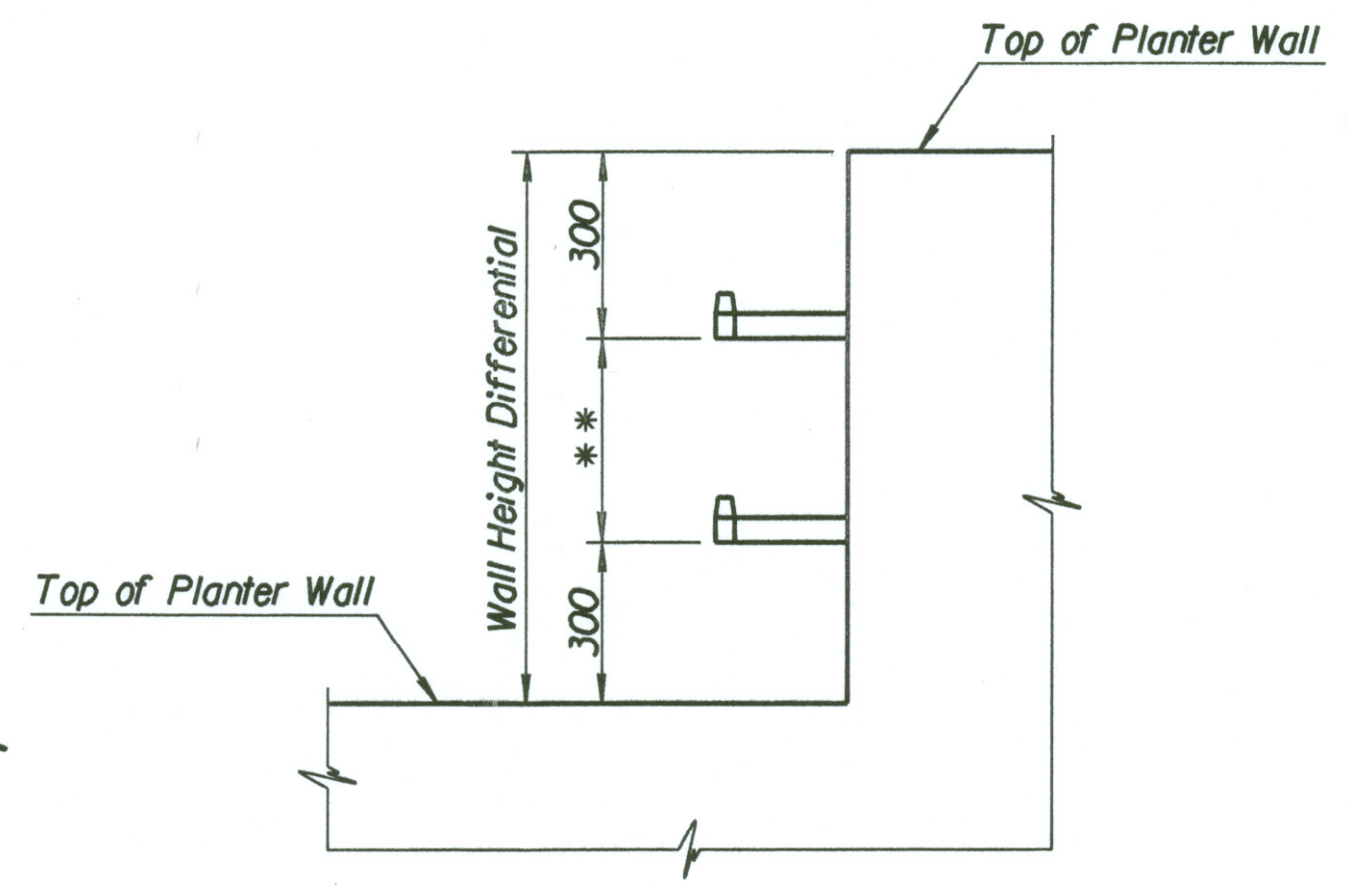
NOTE:
 ① "WALL HEIGHT" = h - 300mm.
 "WALL HEIGHT" = Top of Wall to Top of Footing.



INTERFACE PLAN OF PLANTER WALL TERMINATION



PLANTER WALL PLAN



PARTIAL PLANTER WALL ELEVATION

** See Step Detail for Spacing

Note:
 See Retaining Wall Plan Sheets 240 thru 250 for Wall type and "h" height callouts.

If the C.I.P. Retaining Walls are built then the Planter Wall Drains are to be spaced with the C.I.P. Drains and must be cross connected with 100 mm perforated pipe. This work will be considered subsidiary to the bid item "Planter Walls". See RFI #063 (3-18-04).

DSNR: PDF OPER: DRP SCALE: 1:20
 i:/1997/97362/001/RETWALL/PLANTWALLET.DGN 3-26-2002 14:03:04 LAST REV: 4-11-2002 BY: drp

No.	Revisions	By	Date

CITY OF WICHITA
KELLOGG
 PLANTER WALL
 DETAILS
 SEDGWICK COUNTY

Professional Engineering Consultants, P.A.
 303 S. TOPEKA • WICHITA, KANSAS 67202
 316-262-2691 • FAX 316-262-3003

Designed by	PDF	Checked by	RAS
Drawn by	DRP	Date	April, 2002
		Job No.	97362