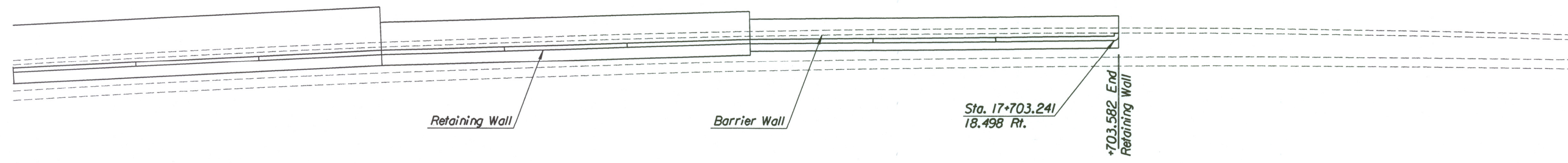
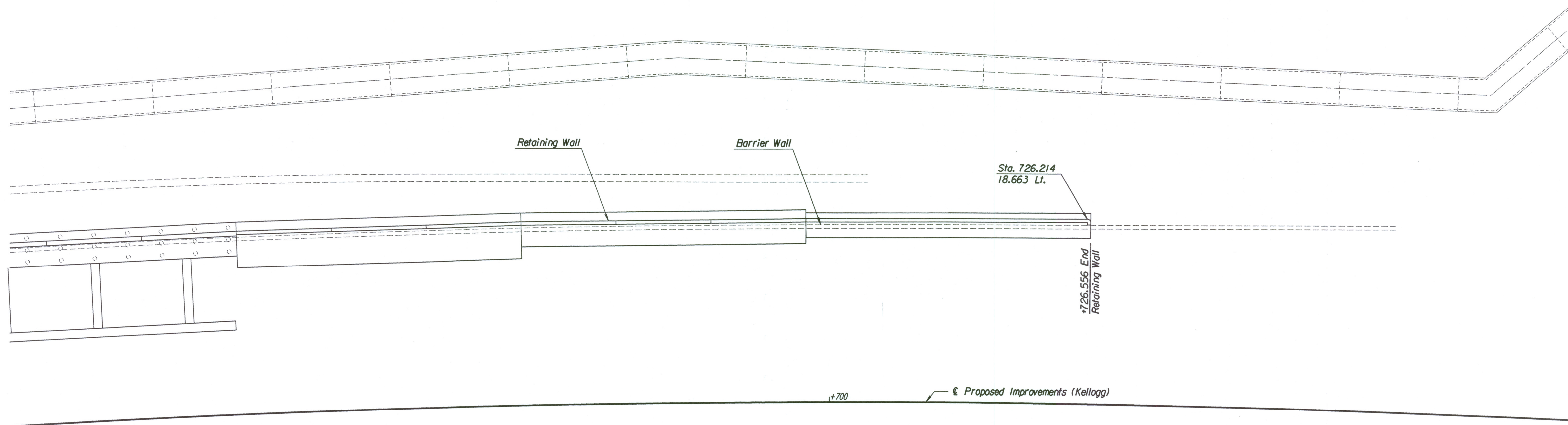


STATE	PROJECT NO.	YEAR	SHEET NO.	TOTAL SHEETS
KANSAS	54-87 K-6657-01	2002	250	1122

DATE	
REFERENCES NOTED	
REFERENCES CHECKED	



SCALE 1:200



PLAN

NOTE:
 Mechanically Stabilized Earth (MSE) Walls were constructed in lieu of Cast-In-Place Retaining Walls.
 See Submittal #'s 21.1, 21.1.A, 21.2.A, 21.2.B, 21.2.C, 21.3.A, 34.1.A, 34.1.B, 34.2.A, 34.3.A & 34.3.
 Also see Special Provision 90M-110-R3.

DSNR: PDF OPER: DRP SCALE: 1:200
 I:/1997/97362/001/RETWALL/PLANTWALL11.DGN 3-19-2002 15:05:52 LAST REV: 3-29-2002 BY: wll

No.	Revisions	By	Date
CITY OF WICHITA KELLOGG CAST IN PLACE RETAINING WALL STA. 17+632 to STA. 17+775 SEDGWICK COUNTY			
Professional Engineering Consultants, P.A. <small>303 S. TOPEKA • WICHITA, KANSAS 67202 316-262-2691 • FAX 316-262-3003</small>			
Designed by	PDF	Checked by	RAS
Drawn by	DRP	Date	Apr 11, 2002 Job No. 97362