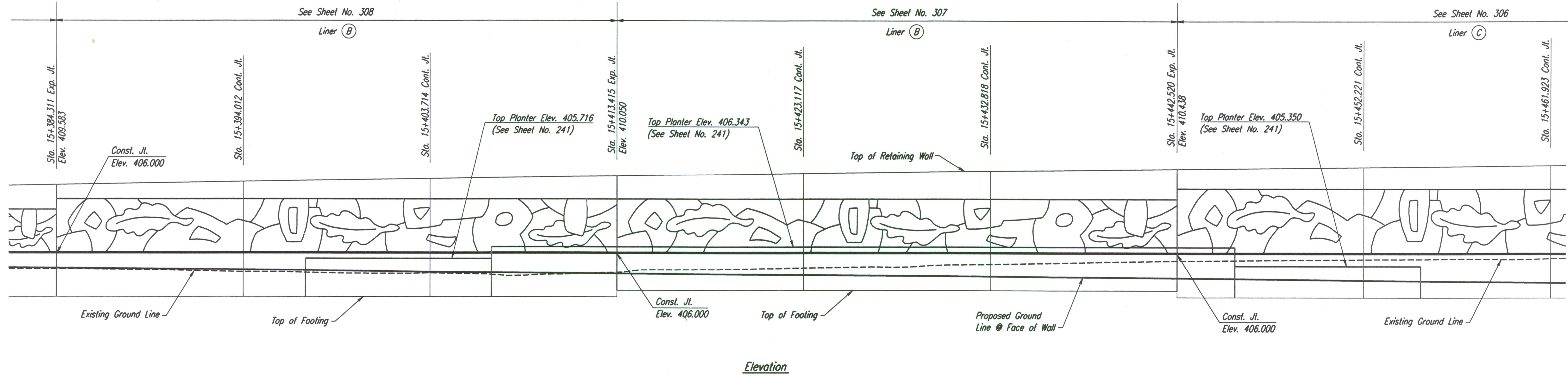
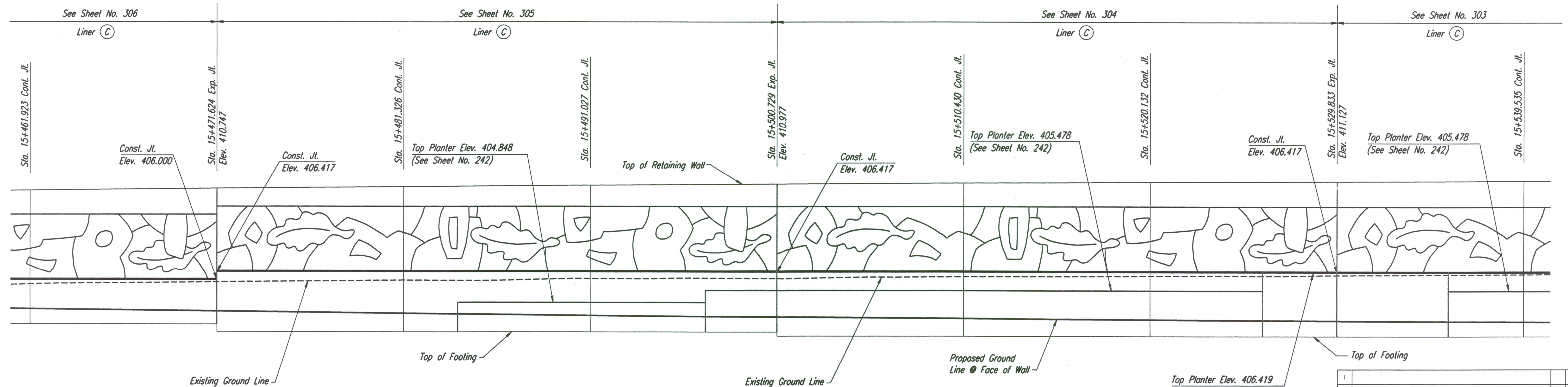


| | | | | |
|--------|-----------------|------|-----------|--------------|
| STATE | PROJECT NO. | YEAR | SHEET NO. | TOTAL SHEETS |
| KANSAS | 54-87 K-6657-01 | 2002 | 253 | 1122 |

| | |
|--------------------|--|
| DATE | |
| BY | |
| REFERENCES NOTED | |
| REFERENCES CHECKED | |



Elevation



Elevation

NOTE:
 Mechanically Stabilized Earth (MSE)
 Walls were constructed in lieu of Cast-In-Place Retaining Walls.
 See Submittal #'s 21.1, 21.1.A, 21.2.A, 21.2.B, 21.2.C, 21.3.A, 34.1.A, 34.1.B, 34.2.A, 34.3.A & 34.3.
 Also see Special Provision 90M-110-R3.

DSMR: WDH OPER: JGP SCALE: 1:100
 15/1997/97362/WALL PLAN/MAIZE.DGN 3-15-2002 11:28:03 LAST REV: BY:

| | | | |
|-----|-----------|----|------|
| No. | Revisions | By | Date |
| | | | |

CITY OF WICHITA
**KELLOGG
 CAST-IN-PLACE RETAINING WALLS
 MAIZE SW ELEVATION**
 SEDGWICK COUNTY

Professional Engineering Consultants, P.A.
 303 S. TOPEKA • WICHITA, KANSAS 67202
 316-262-2691 • FAX 316-262-3003

| | | | |
|-------------|-----|------------|-------------|
| Designed by | PDF | Checked by | RAS |
| Drawn by | JSB | Date | April, 2002 |
| | | Job No. | 97362 |