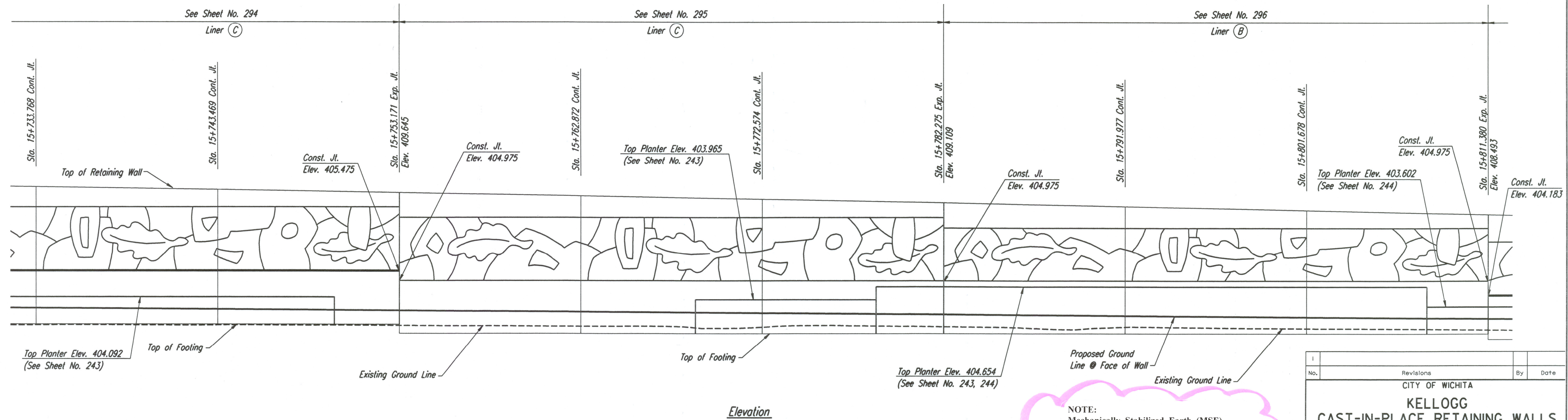
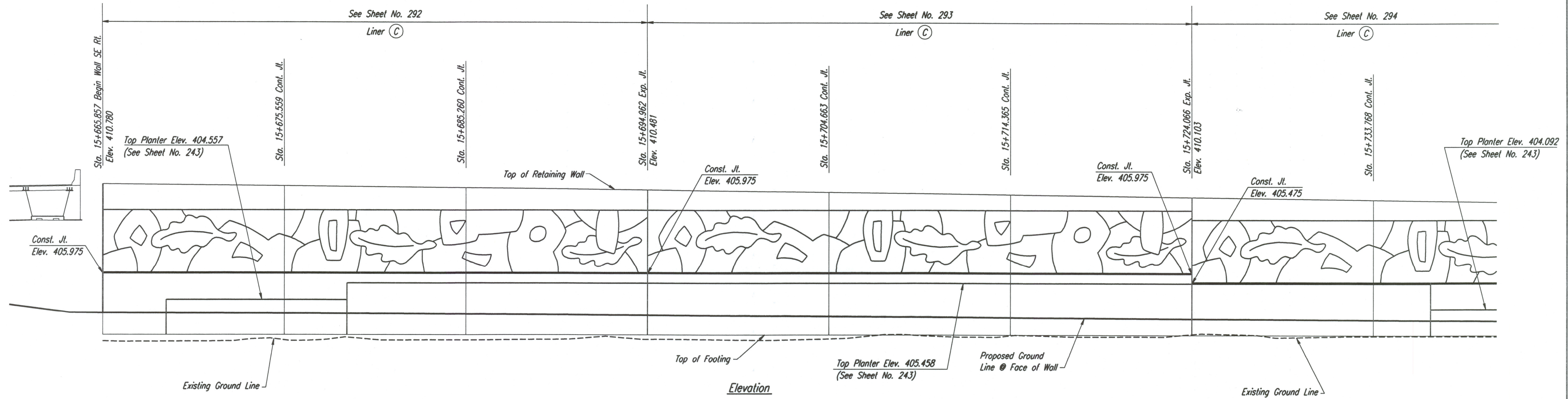


STATE	PROJECT NO.	YEAR	SHEET NO.	TOTAL SHEETS
KANSAS	54-87 K-6657-01	2002	259	1122

DATE	
BY	
REFERENCES NOTED	
REFERENCES CHECKED	



NOTE:  
Mechanically Stabilized Earth (MSE) Walls were constructed in lieu of Cast-In-Place Retaining Walls. See Submittal #'s 21.1, 21.1.A, 21.2.A, 21.2.B, 21.2.C, 21.3.A, 34.1.A, 34.1.B, 34.2.A, 34.3.A & 34.3. Also see Special Provision 90M-110-R3.

No.	Revisions	By	Date

CITY OF WICHITA  
**KELLOGG**  
CAST-IN-PLACE RETAINING WALLS  
MAIZE SE ELEVATION  
SEDGWICK COUNTY

Professional Engineering Consultants, P.A.  
303 S. TOPEKA • WICHITA, KANSAS 67202  
316-262-2691 • FAX 316-262-3003

Designed by	PDF	Checked by	RAS
Drawn by	JSB	Date	April, 2002
		Job No.	97362

DSNR: WDH OPER: JGP SCALE: 1:100  
1/1997/97362/WALL PLAN/MAIZE.DGN 3-15-2002 11:28:03 LAST REV: BY: