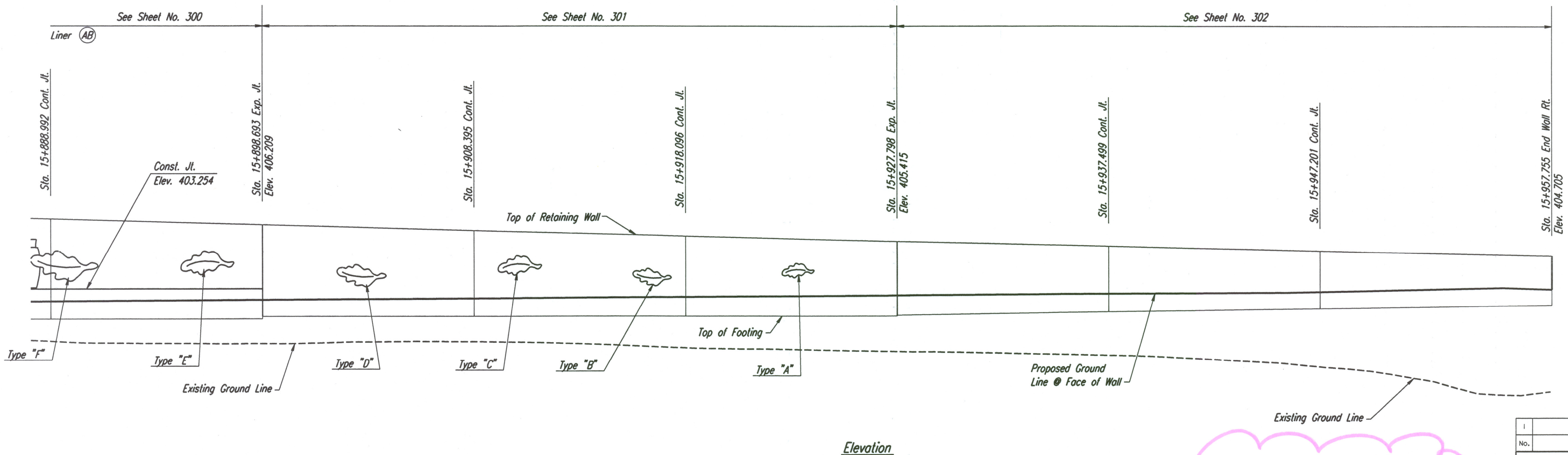
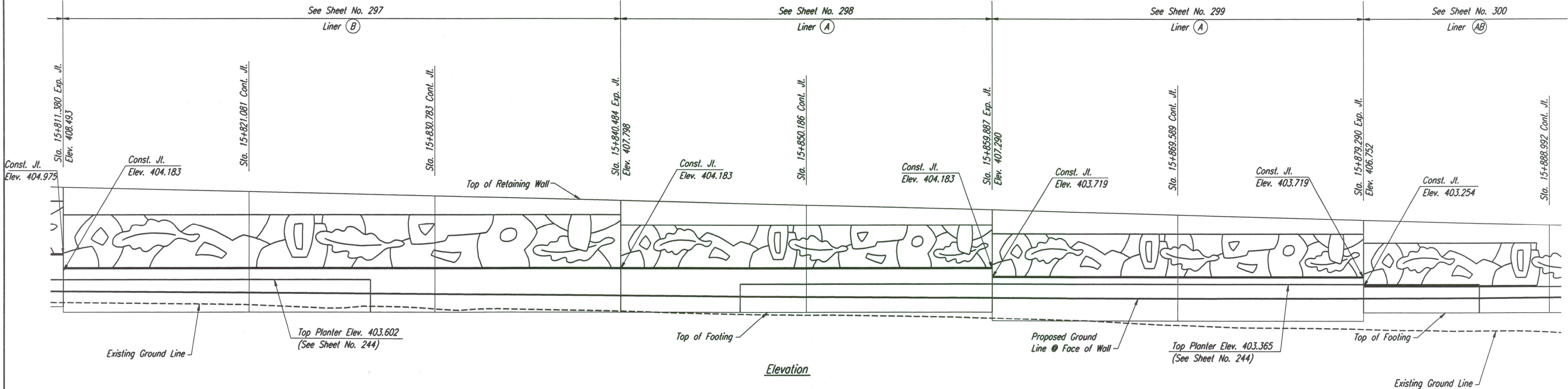


STATE	PROJECT NO.	YEAR	SHEET NO.	TOTAL SHEETS
KANSAS	54-87 K-6657-01	2002	260	1122

DATE	
BY	
REFERENCES NOTED	
REFERENCES CHECKED	



NOTE:
 Mechanically Stabilized Earth (MSE) Walls were constructed in lieu of Cast-In-Place Retaining Walls.
 See Submittal #'s 21.1, 21.1.A, 21.2.A, 21.2.B, 21.2.C, 21.3.A, 34.1.A, 34.1.B, 34.2.A, 34.3.A & 34.3.
 Also see Special Provision 90M-110-R3.

DSNR: WDH OPER: JGP SCALE: 1:100
 1/1997/97362/WALL PLAN/MAIZENE.DGN 3-15-2002 11:28:03 LAST REV: BY:

No.	Revisions	By	Date
CITY OF WICHITA			
KELLOGG			
CAST-IN-PLACE RETAINING WALLS			
MAIZE SE ELEVATION			
SEDGWICK COUNTY			
Professional Engineering Consultants, P.A.			
<small>303 S. TOPEKA • WICHITA, KANSAS 67202 316-262-2691 • FAX 316-262-3003</small>			
Designed by	PDF	Checked by	RAS
Drawn by	JSB	Date	April, 2002
		Job No.	97362