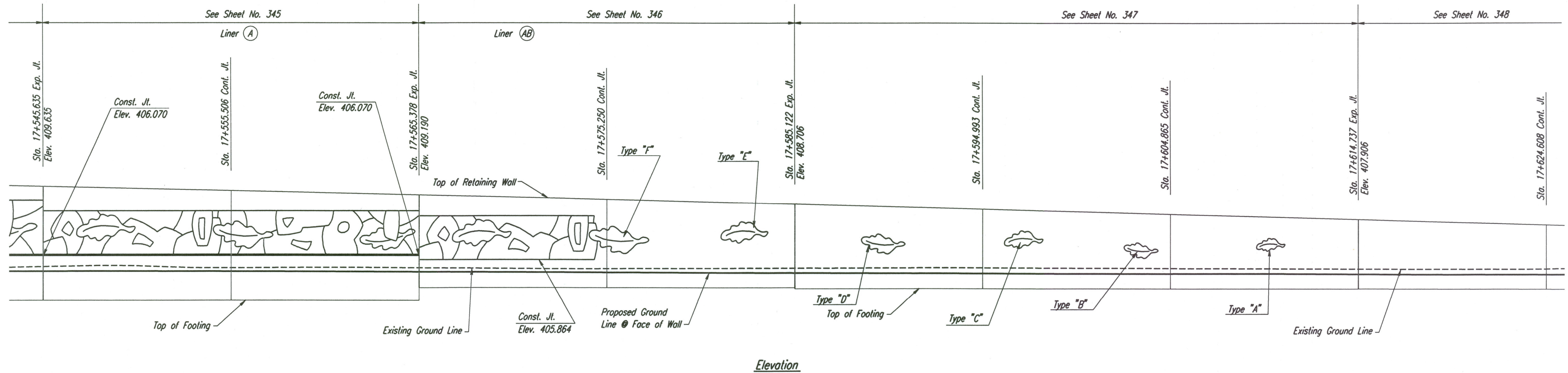
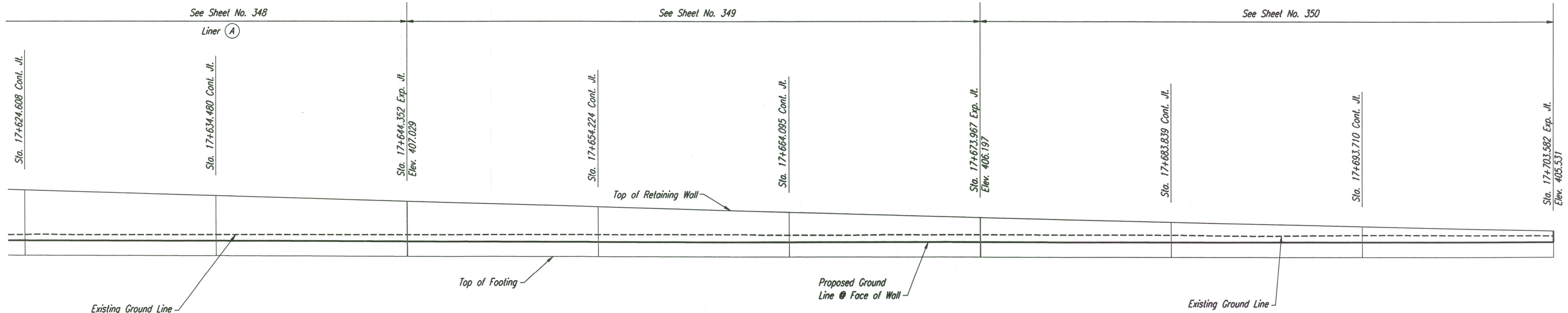


STATE	PROJECT NO.	YEAR	SHEET NO.	TOTAL SHEETS
KANSAS	54-87 K-6657-01	2002	270	1122

DATE	BY	REFERENCES NOTED	REFERENCES CHECKED



Elevation



Elevation

**NOTE:**  
 Mechanically Stabilized Earth (MSE) Walls were constructed in lieu of Cast-In-Place Retaining Walls.  
 See Submittal #'s 21.1, 21.1.A, 21.2.A, 21.2.B, 21.2.C, 21.3.A, 34.1.A, 34.1.B, 34.2.A, 34.3.A & 34.3.  
 Also see Special Provision 90M-110-R3.

No.	Revisions	By	Date

CITY OF WICHITA  
**KELLOGG**  
**CAST-IN-PLACE RETAINING WALLS**  
**TYLER SE ELEVATION**  
 SEDGWICK COUNTY

**Professional Engineering Consultants, P.A.**  
 303 S. TOPEKA • WICHITA, KANSAS 67202  
 316-262-2691 • FAX 316-262-3003

Designed by	PDF	Checked by	RAS
Drawn by	JSB	Date	Apr 11, 2002
		Job No.	97362

DSNR: DWH OPER: JGP SCALE: 1:100  
 I:/1997/97362/WALL PLAN/TYLERSE.DGN 3-15-2002 11:25:02 LAST REV: BY: