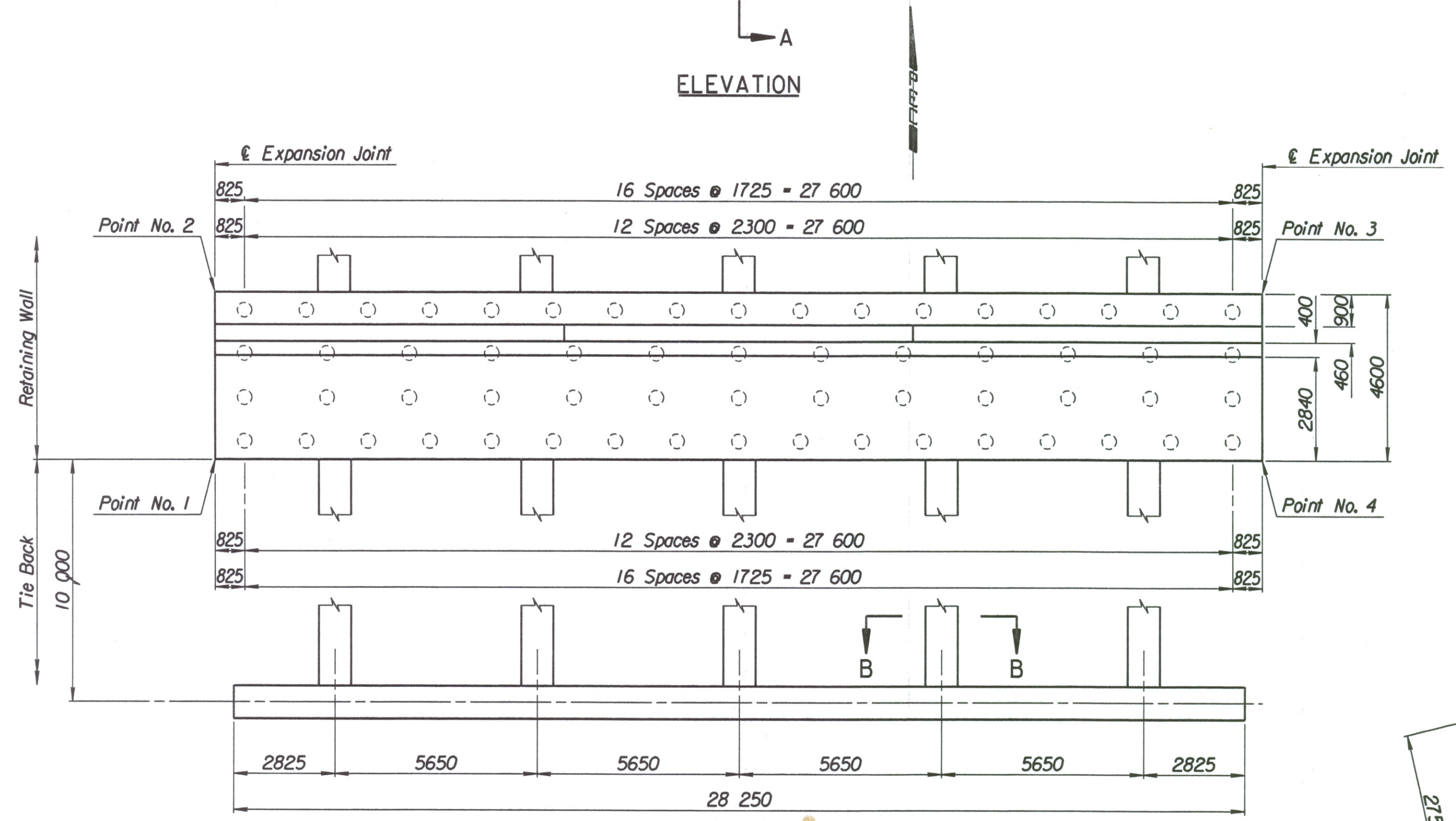
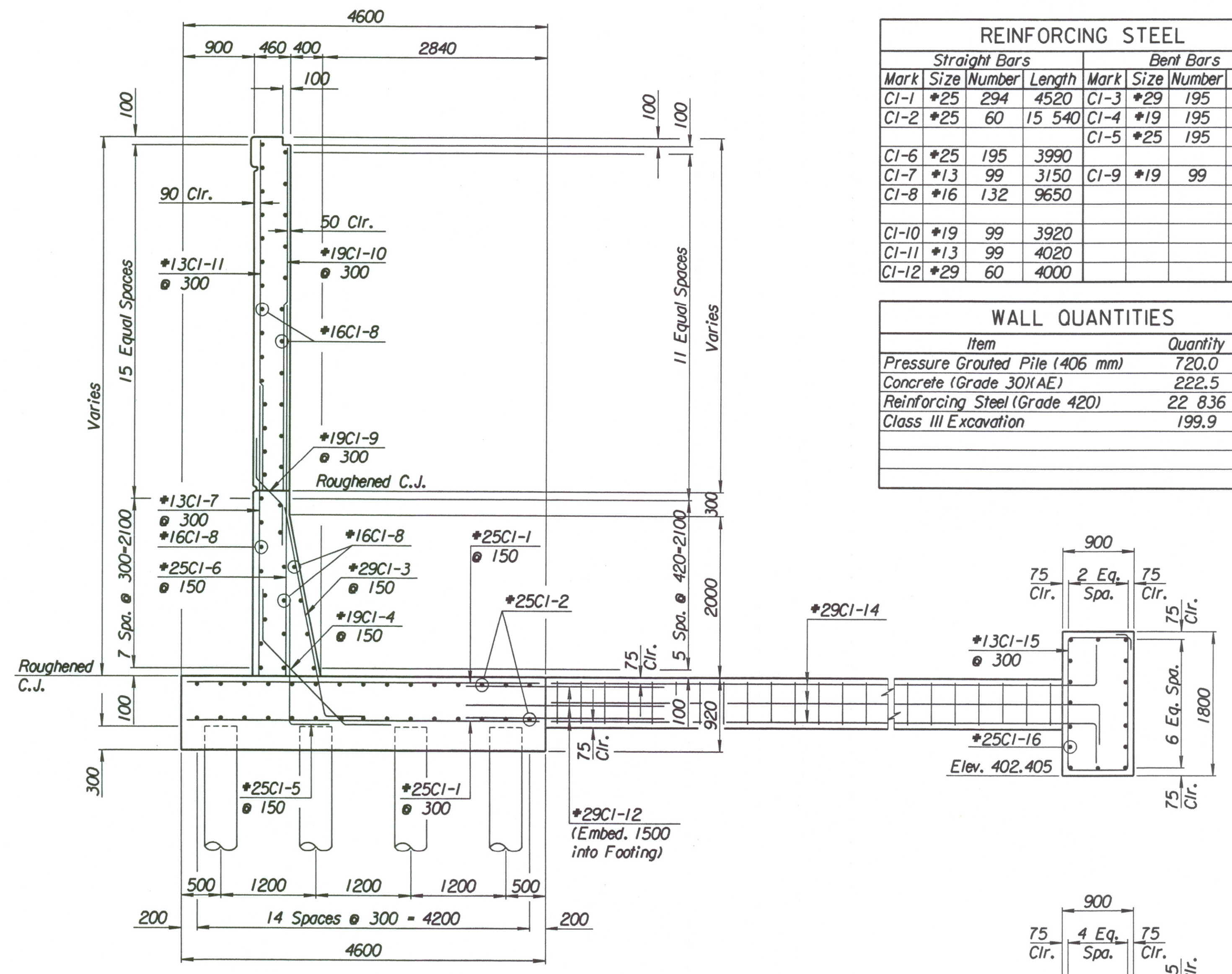
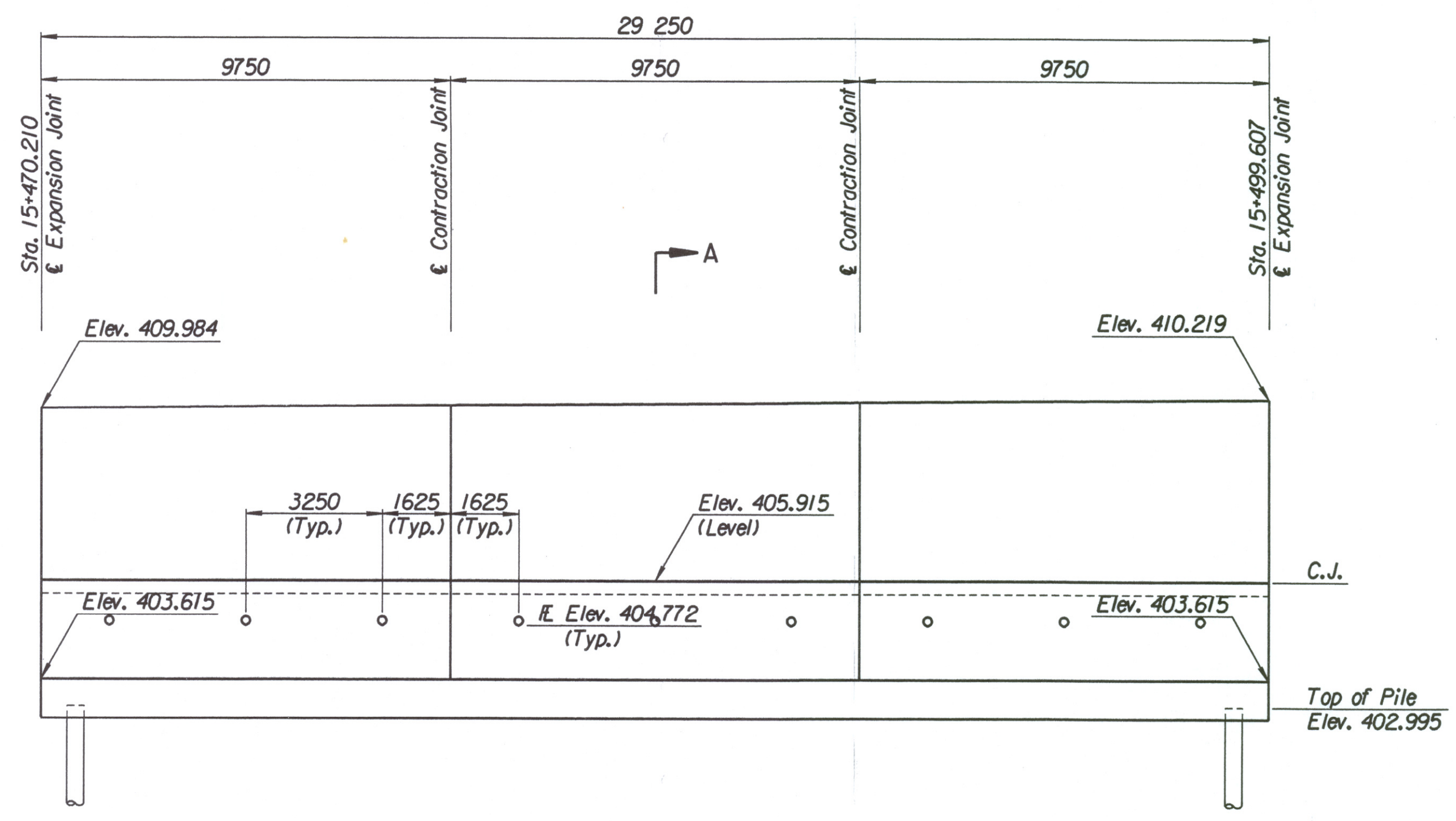


LAYOUT INFORMATION				
Point No.	North Coordinate	East Coordinate	Station	Offset
1	511376.933	491470.776	15+470.210	14.795 Lt.
2	511381.482	491470.092	15+470.210	19.395 Lt.
3	511385.942	491498.993	15+499.607	19.395 Lt.
4	511381.399	491499.713	15+499.607	14.795 Lt.

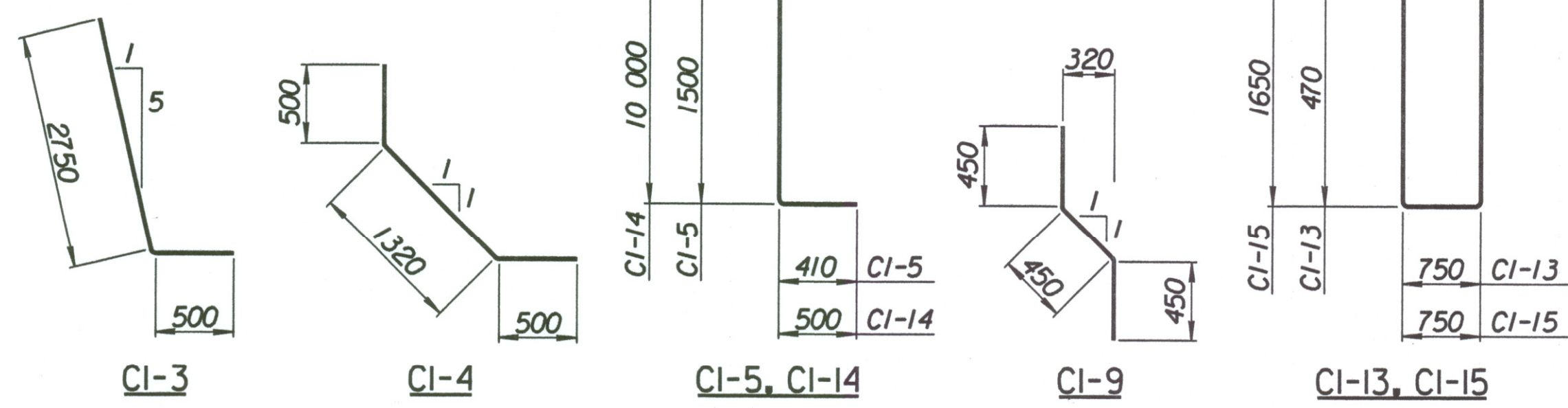
REINFORCING STEEL							
Straight Bars			Bent Bars				
Mark	Size	Number	Length	Mark	Size	Number	Length
CI-1	*25	294	4520	CI-3	*29	195	3250
CI-2	*25	60	15 540	CI-4	*19	195	2320
CI-6	*25	195	3990	CI-5	*25	195	1910
CI-7	*13	99	3150	CI-9	*19	99	1350
CI-8	*16	132	9650				
CI-10	*19	99	3920				
CI-11	*13	99	4020				
CI-12	*29	60	4000				

WALL QUANTITIES		
Item	Quantity	Unit
Pressure Grouted Pile (406 mm)	720.0	m
Concrete (Grade 30(AE))	222.5	m ³
Reinforcing Steel (Grade 420)	22 836	kg
Class III Excavation	199.9	m ³

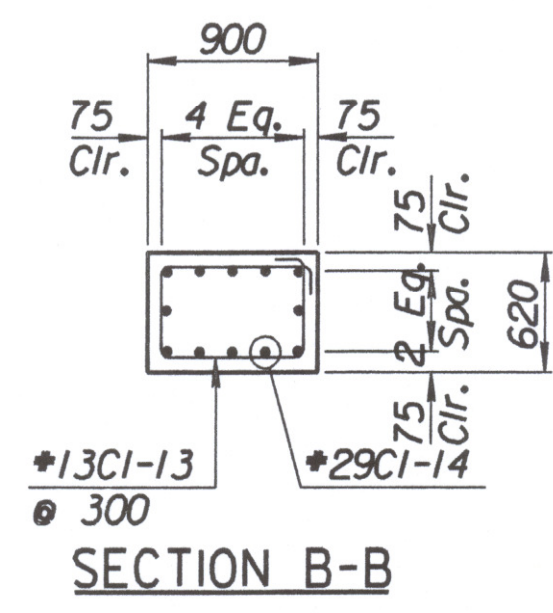


TIE BACK REINFORCING STEEL							
Straight Bars			Bent Bars				
Mark	Size	Number	Length	Mark	Size	Number	Length
CI-16	*25	32	15 040	CI-13	*13	160	2740
				CI-14	*29	60	10 500
				CI-15	*13	94	5100

TIE BACK QUANTITIES		
Item	Quantity	Unit
Concrete (Grade 30(AE))	72.4	m ³
Reinforcing Steel (Grade 420)	6012	kg



BENDING DIAGRAMS
All dimensions are out to out of bars.



No.	Revisions	By	Date
CITY OF WICHITA			
MAIZE NORTHWEST WALL			
STA. 15+470.210 TO STA. 15+499.607			
SEDGWICK COUNTY			
 Professional Engineering Consultants, P.A. 303 S. TOPEKA • WICHITA, KANSAS 67202 316-262-2691 • FAX 316-262-3003			
Designed by	P.D.F.	Checked by	R.A.S.
Drawn by	W.L.L.	Date	Apr., 2002
			Job No. 97362

Drawn by: will
 Plotted by: drp 3-25-2002
 i:/1997/97362/001/bridge/maizerd/MWwall-3