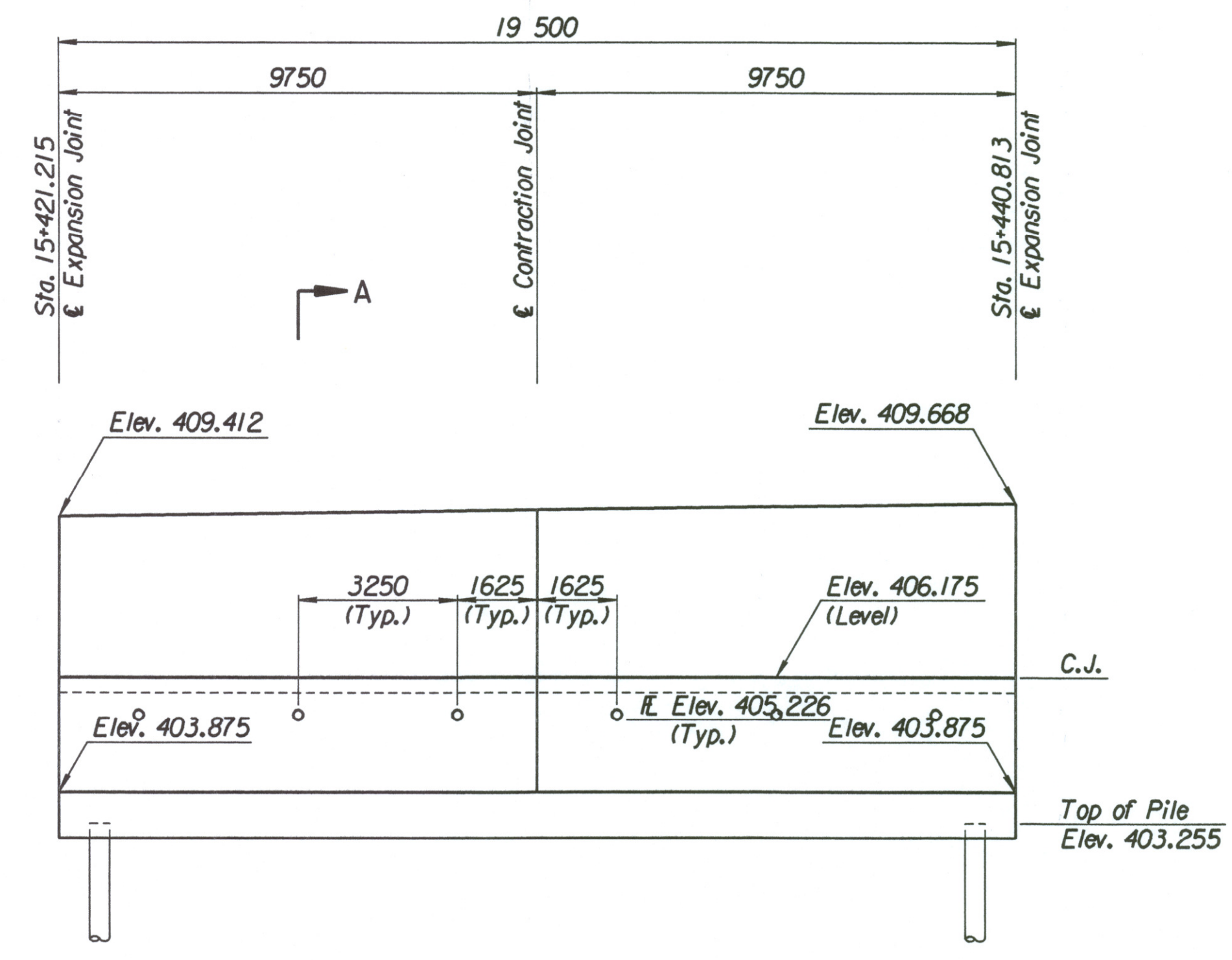


STATE	PROJECT NO.	YEAR	SHEET NO.	TOTAL SHEETS
KANSAS	54-87 K-6657-01	2002	275	1122

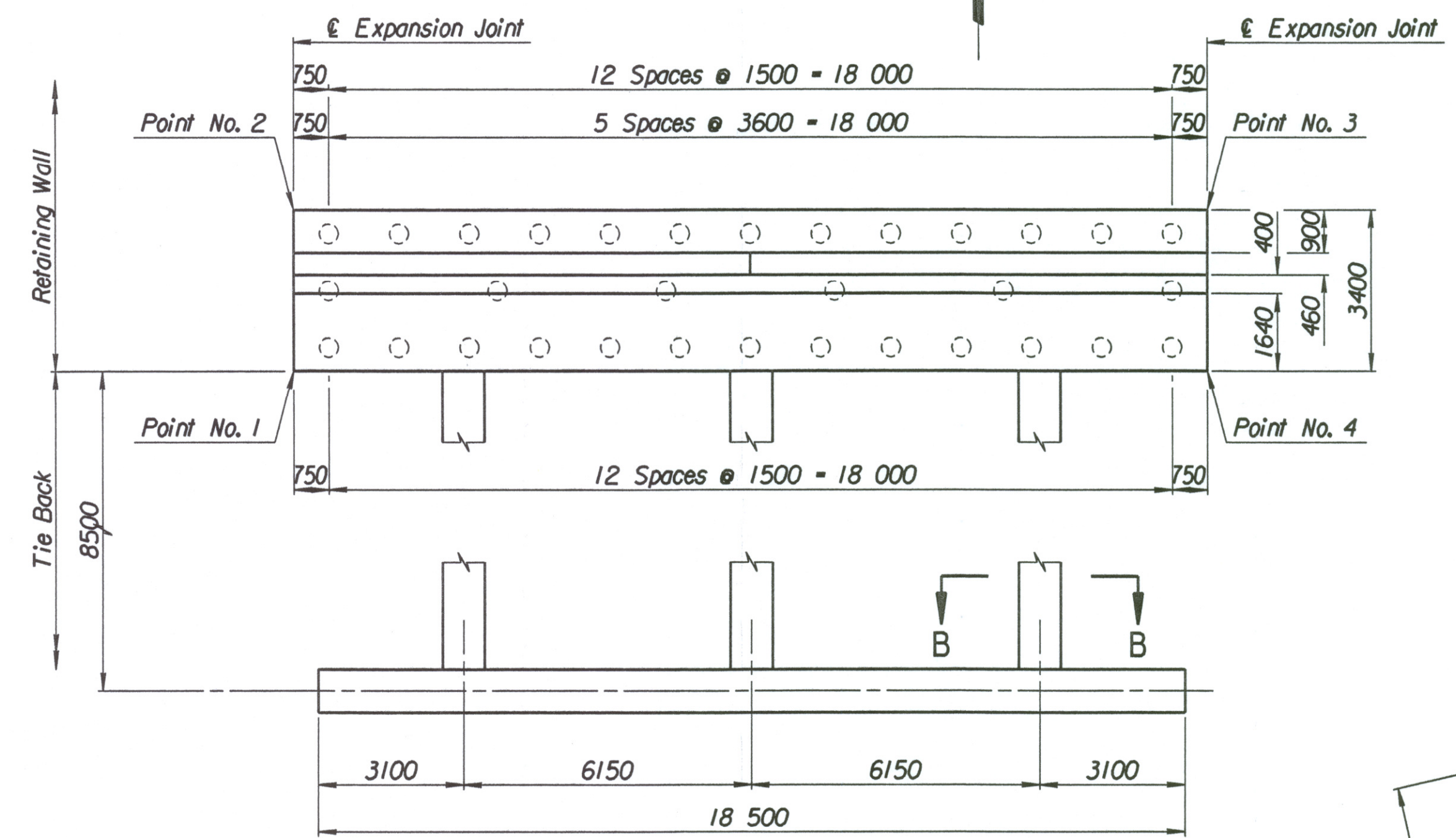
LAYOUT INFORMATION				
Point No.	North Coordinate	East Coordinate	Station	Offset
1	511371.190	491422.310	15+421.215	15.995 Lt.
2	511374.558	491421.849	15+421.215	19.395 Lt.
3	511377.251	491441.157	15+440.813	19.395 Lt.
4	511373.885	491441.636	15+440.813	15.995 Lt.

REINFORCING STEEL							
Straight Bars				Bent Bars			
Mark	Size	Number	Length	Mark	Size	Number	Length
E1-1	*25	164	3320	E1-3	*22	130	3110
E1-2	*25	44	10 670	E1-4	*22	66	2320
				E1-5	*19	130	1500
E1-6	*19	130	3470				
E1-7	*13	66	3170	E1-9	*16	66	1350
E1-8	*16	78	9650				
E1-10	*19	66	3090				
E1-11	*13	66	3190				
E1-12	*29	36	4000				

WALL QUANTITIES		
Item	Quantity	Unit
Pressure Grouted Pile (406 mm)	384.0	m
Concrete (Grade 30(AE))	119.4	m ³
Reinforcing Steel (Grade 420)	10 076	kg
Class III Excavation	117.6	m ³



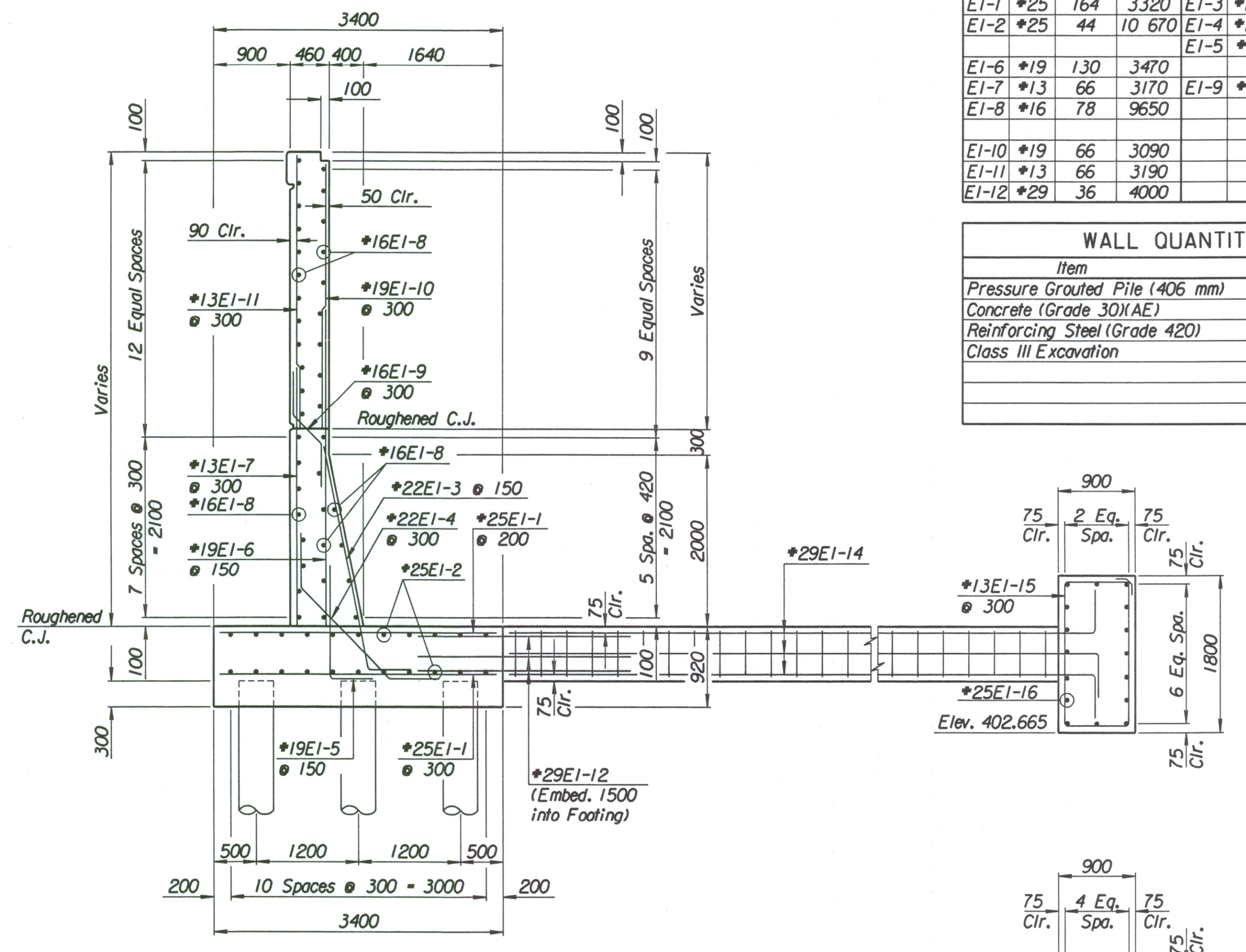
ELEVATION



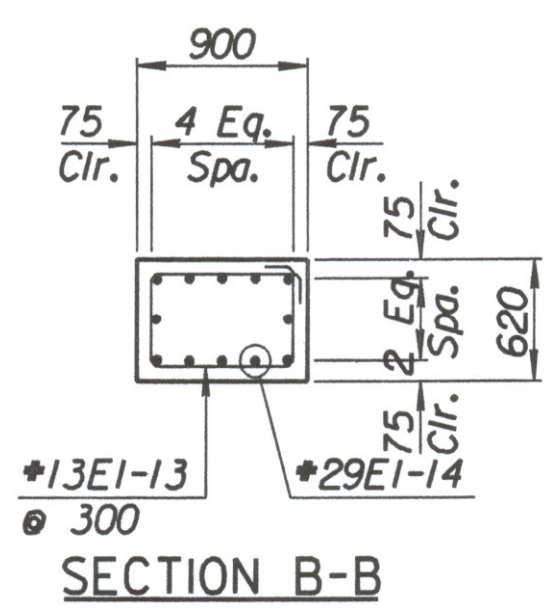
PLAN

TIE BACK REINFORCING STEEL							
Straight Bars				Bent Bars			
Mark	Size	Number	Length	Mark	Size	Number	Length
E1-16	*25	32	10 170	E1-13	*13	81	2740
				E1-14	*29	36	9000
				E1-15	*13	63	5100

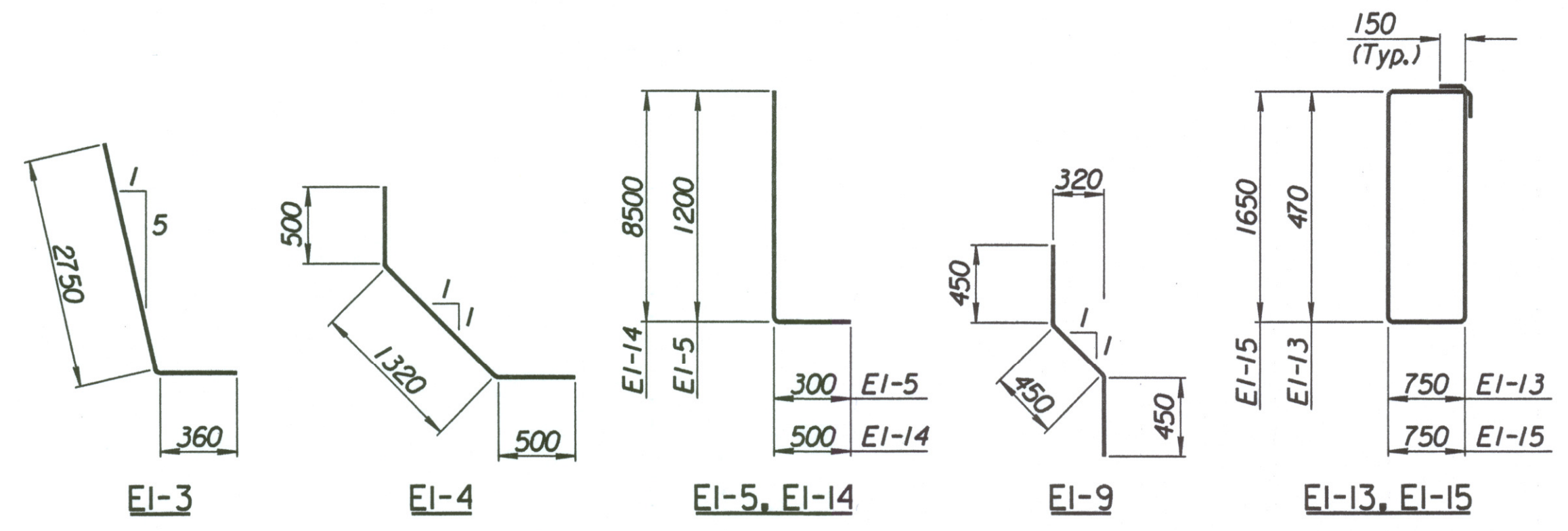
TIE BACK QUANTITIES		
Item	Quantity	Unit
Concrete (Grade 30(AE))	43.4	m ³
Reinforcing Steel (Grade 420)	3472	kg



SECTION A-A



SECTION B-B



BENDING DIAGRAMS
All dimensions are out to out of bars.

No.	Revisions	By	Date
-----	-----------	----	------

CITY OF WICHITA
MAIZE NORTHWEST WALL
STA. 15+421.215 TO STA. 15+440.813
SEDGWICK COUNTY

Professional Engineering Consultants, P.A.
303 S. TOPEKA • WICHITA, KANSAS 67202
316-262-2691 • FAX 316-262-3003

Designed by	P.D.F.	Checked by	R.A.S.
Drawn by	W.L.L.	Date	Apr. 2002
		Job No.	97362

Drawn by: wll
Plotted by: drp
3-25-2002
i:\1997\97362\001\bridge\maizerd\NWwall-5