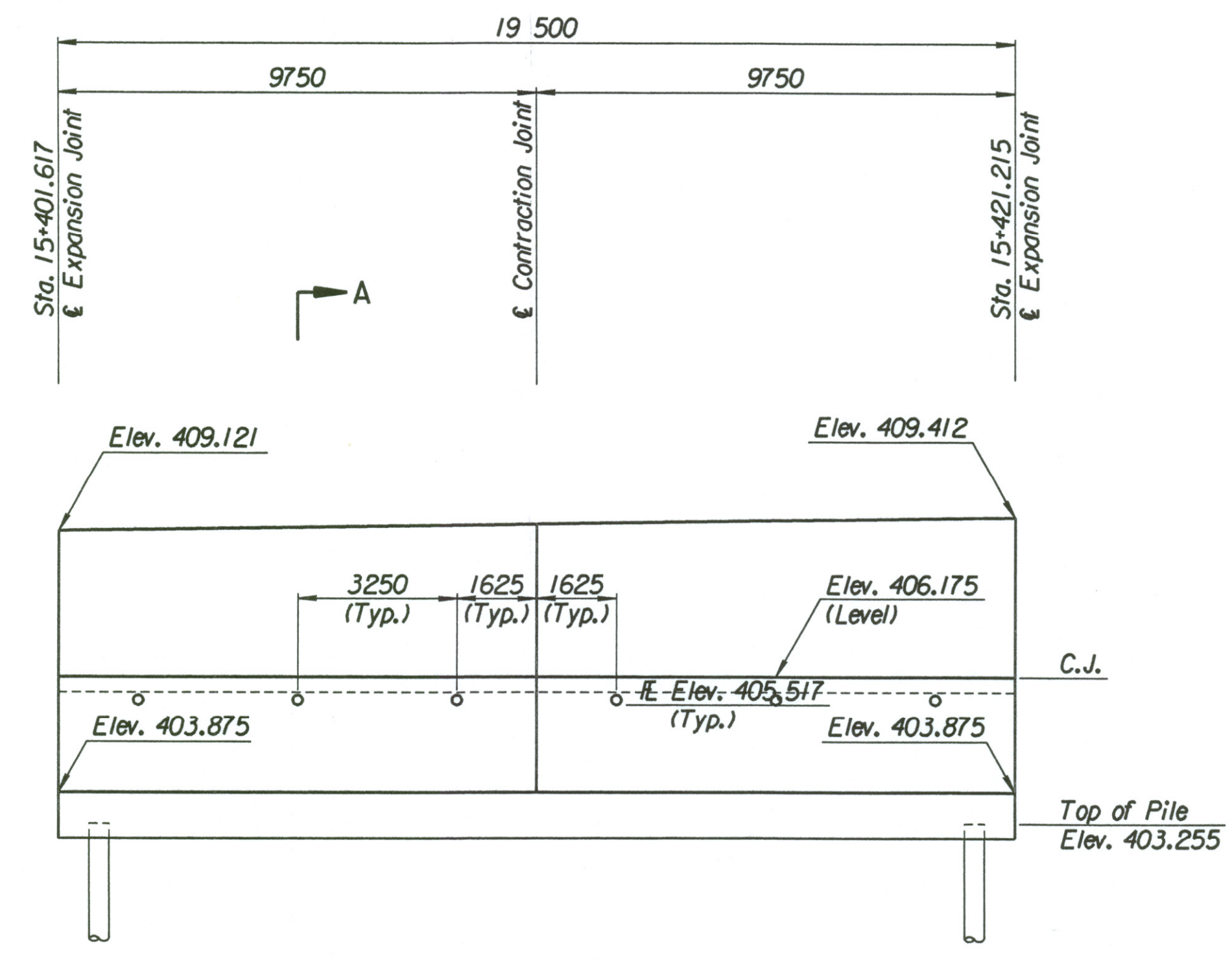


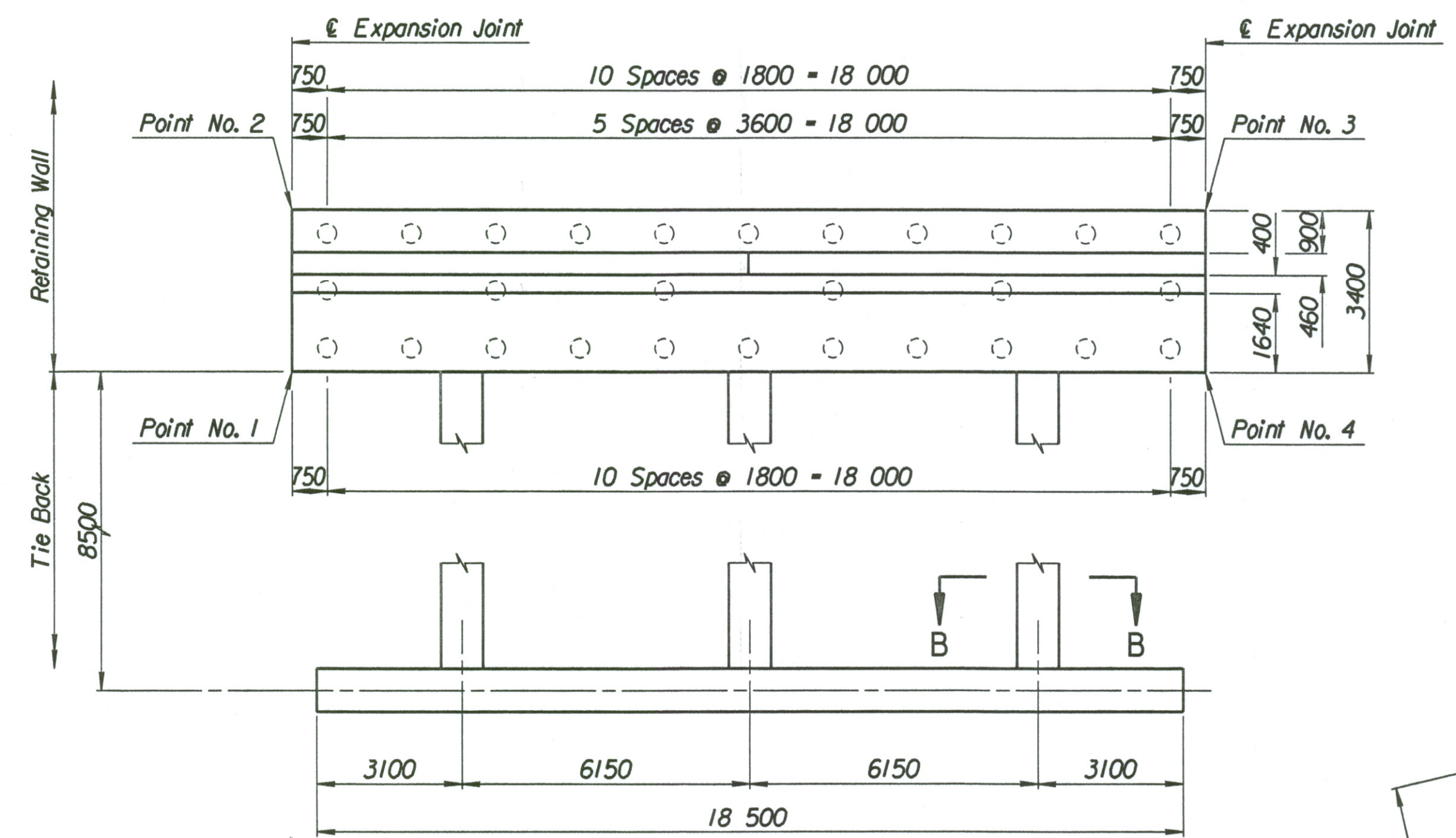
LAYOUT INFORMATION				
Point No.	North Coordinate	East Coordinate	Station	Offset
1	511368.597	491402.969	15+401.617	15.995 Lt.
2	511371.968	491402.526	15+401.617	19.395 Lt.
3	511374.558	491421.849	15+421.215	19.395 Lt.
4	511371.190	491422.310	15+421.215	15.995 Lt.

REINFORCING STEEL							
Straight Bars			Bent Bars				
Mark	Size	Number	Length	Mark	Size	Number	Length
F1-1	*25	164	3320	F1-3	*22	130	3110
F1-2	*25	44	10 670	F1-4	*22	66	2320
				F1-5	*19	130	1500
F1-6	*19	130	3510				
F1-7	*13	66	3200	F1-9	*16	66	1350
F1-8	*16	74	9650				
F1-10	*19	66	2790				
F1-11	*13	66	2890				
F1-12	*29	36	4000				

WALL QUANTITIES		
Item	Quantity	Unit
Pressure Grouted Pile (406 mm)	336.0	m
Concrete (Grade 30(AE))	117.0	m <sup>3</sup>
Reinforcing Steel (Grade 420)	9966	kg
Class III Excavation	105.8	m <sup>3</sup>



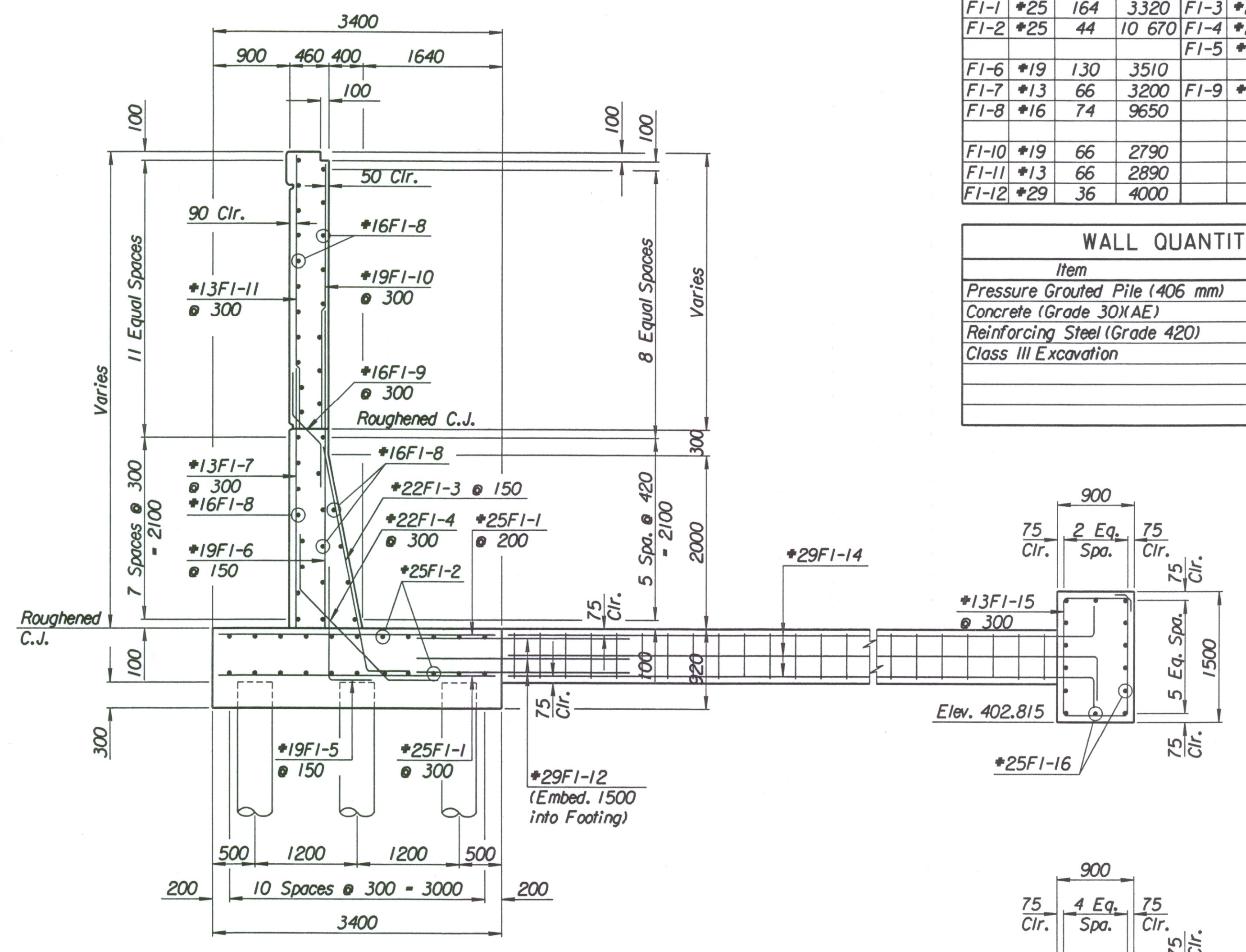
ELEVATION



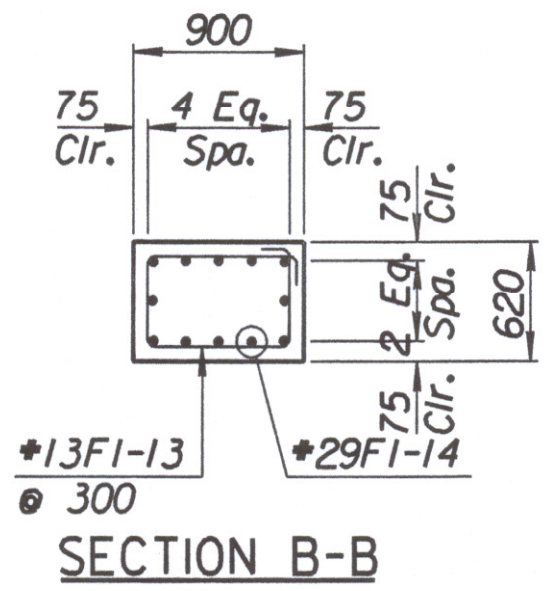
PLAN

TIE BACK REINFORCING STEEL							
Straight Bars				Bent Bars			
Mark	Size	Number	Length	Mark	Size	Number	Length
F1-16	*25	28	10 170	F1-13	*13	81	2740
				F1-14	*29	36	9000
				F1-15	*13	63	4500

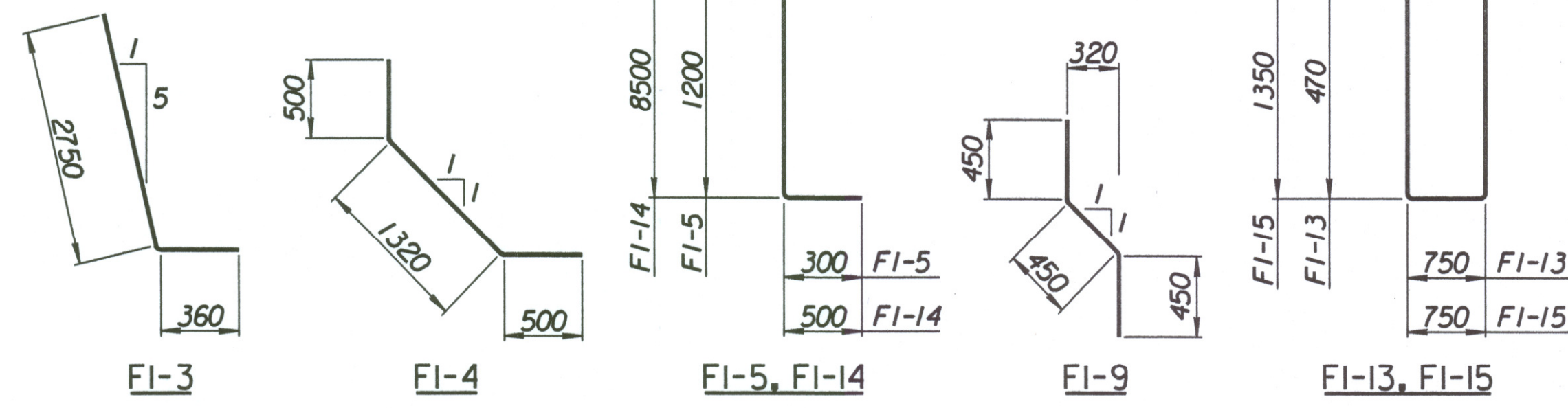
TIE BACK QUANTITIES		
Item	Quantity	Unit
Concrete (Grade 30(AE))	38.5	m <sup>3</sup>
Reinforcing Steel (Grade 420)	3273	kg



SECTION A-A



SECTION B-B



BENDING DIAGRAMS  
All dimensions are out to out of bars.

No.	Revisions	By	Date
CITY OF WICHITA			
<b>MAIZE NORTHWEST WALL</b>			
STA. 15+401.617 TO STA. 15+421.215			
SEDGWICK COUNTY			
 303 S. TOPEKA • WICHITA, KANSAS 67202 316-262-2601 • FAX 316-262-3003			
Designed by	P.D.F.	Checked by	R.A.S.
Drawn by	W.L.L.	Date	Apr. 2002
		Job No.	97362

Drawn by: wll  
 Plotted by: drp 3-25-2002  
 I:\1997\97362\001\bridge\maizerd\NWwall-6