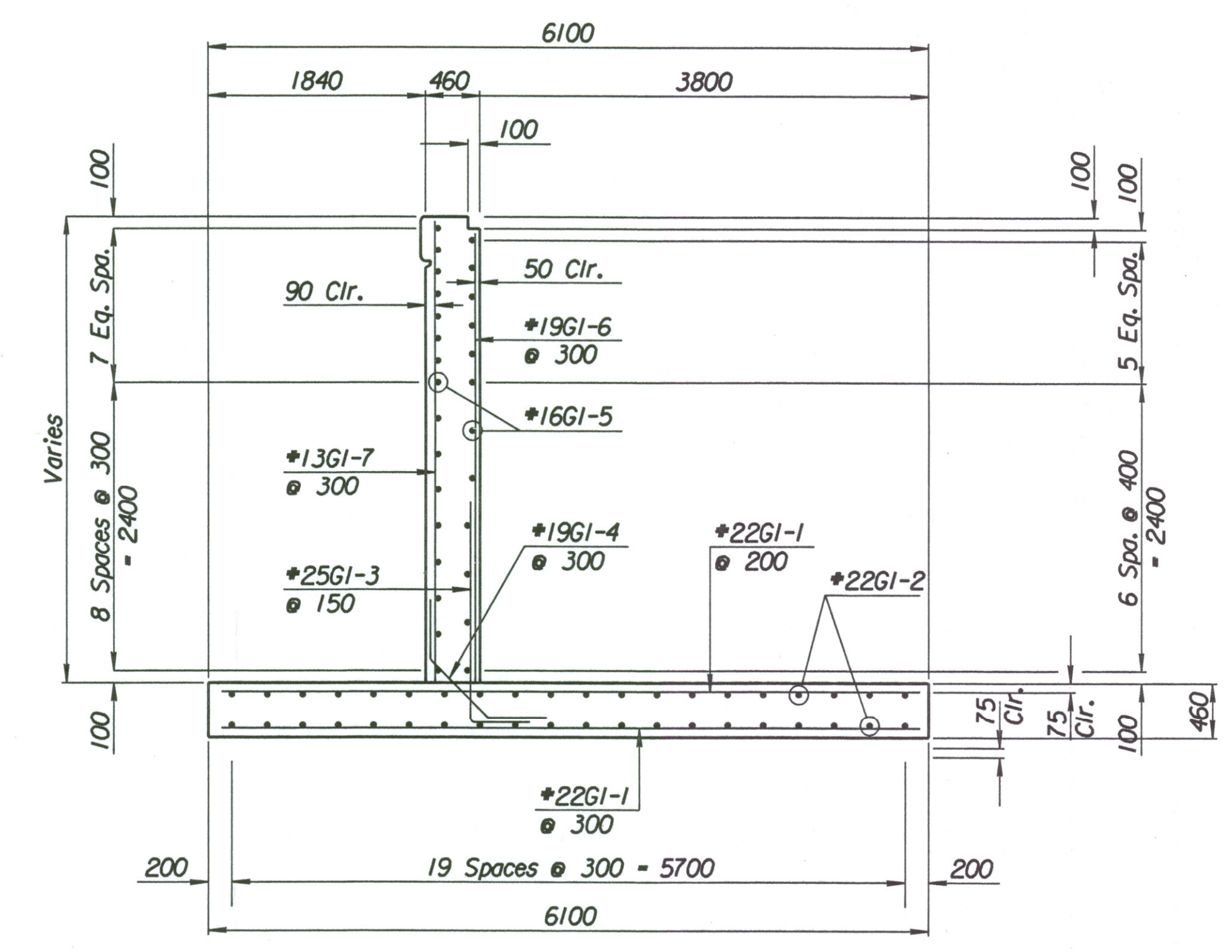
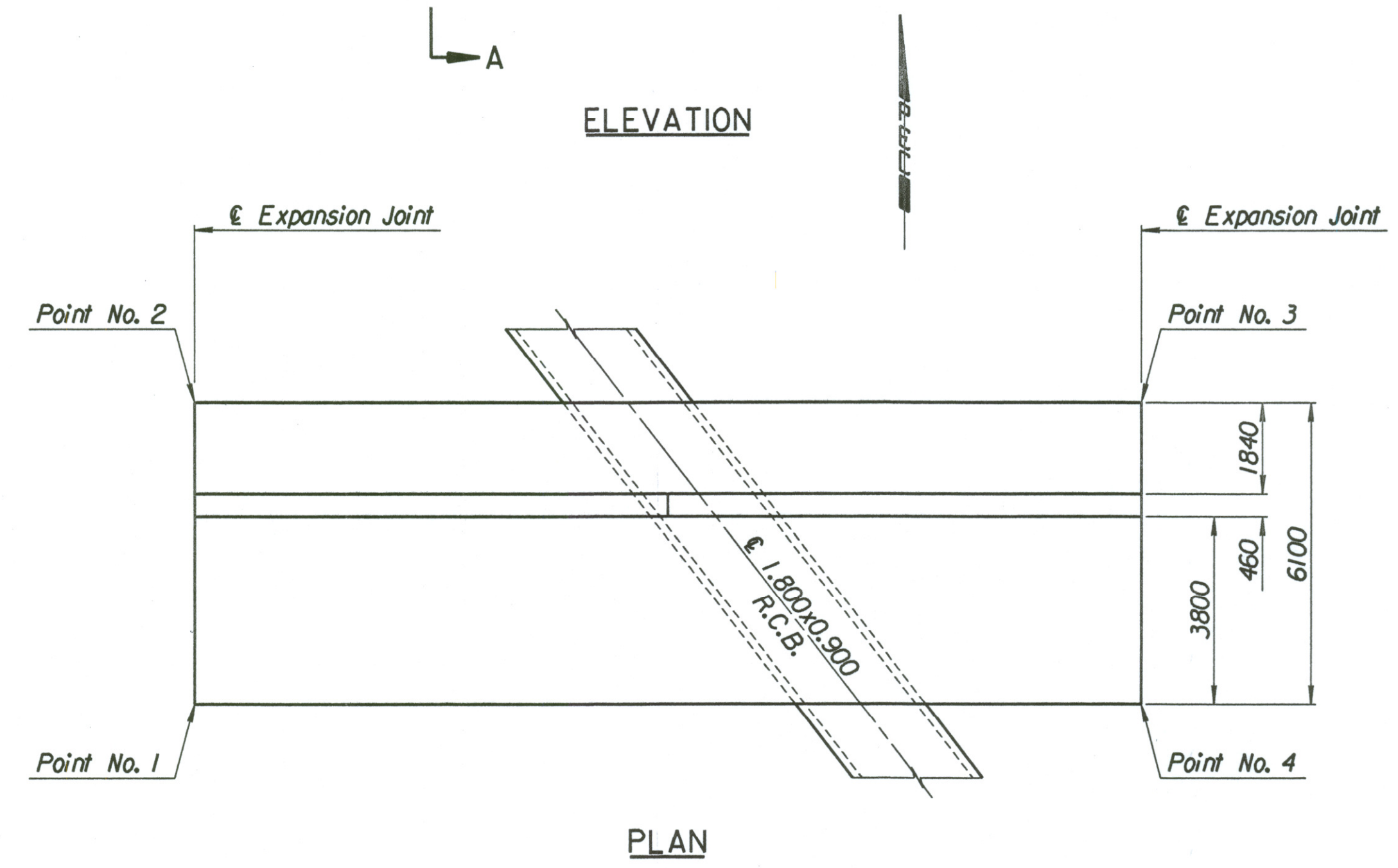
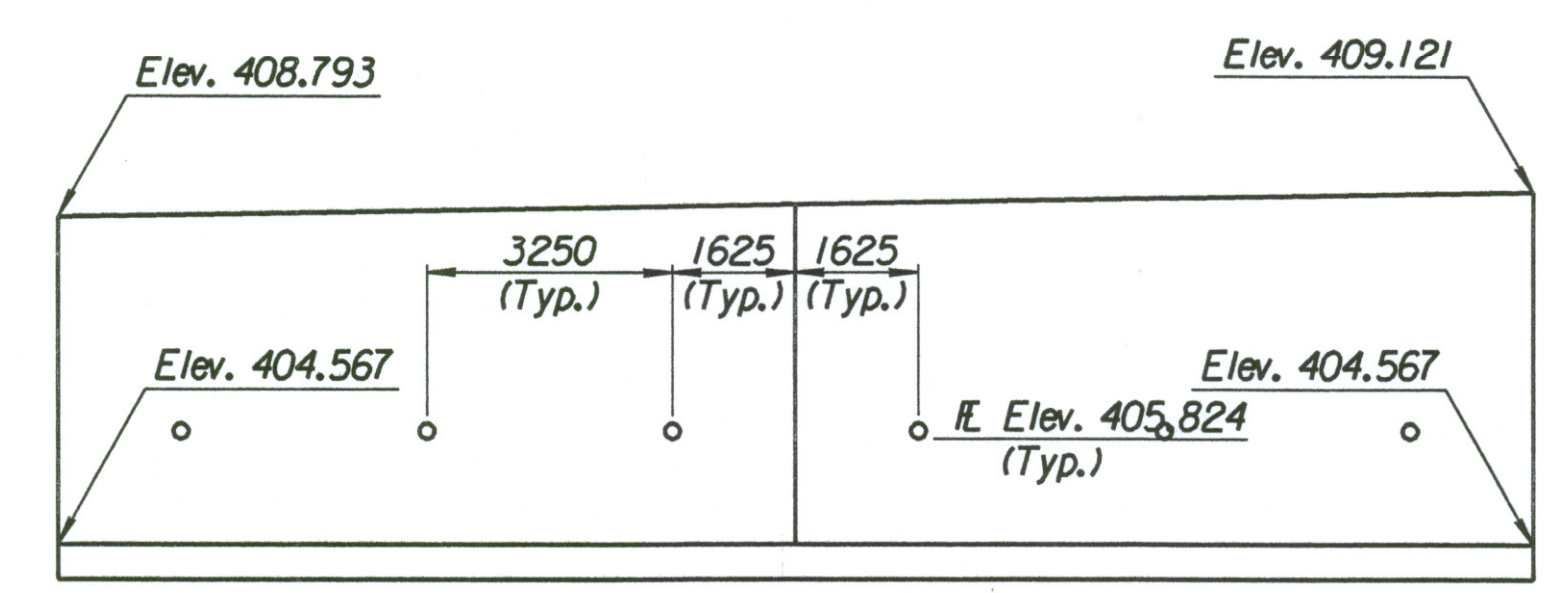
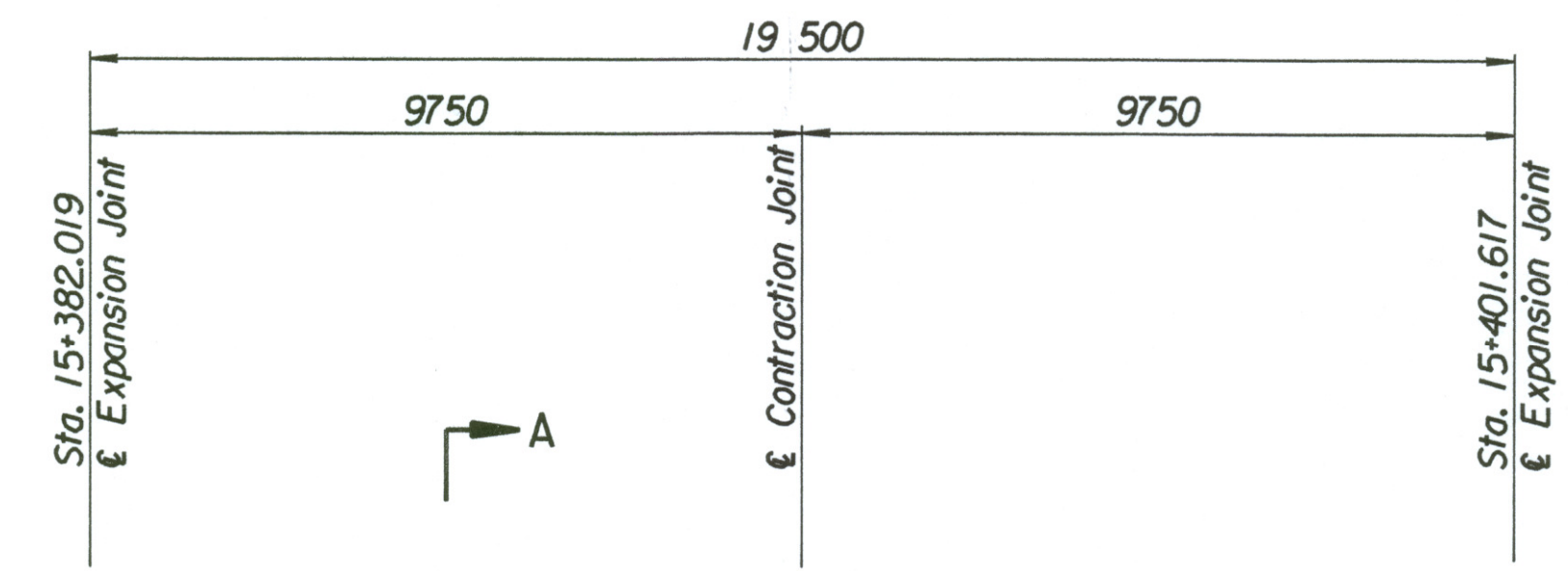


STATE	PROJECT NO.	YEAR	SHEET NO.	TOTAL SHEETS
KANSAS	54-87 K-6657-01	2002	277	1122

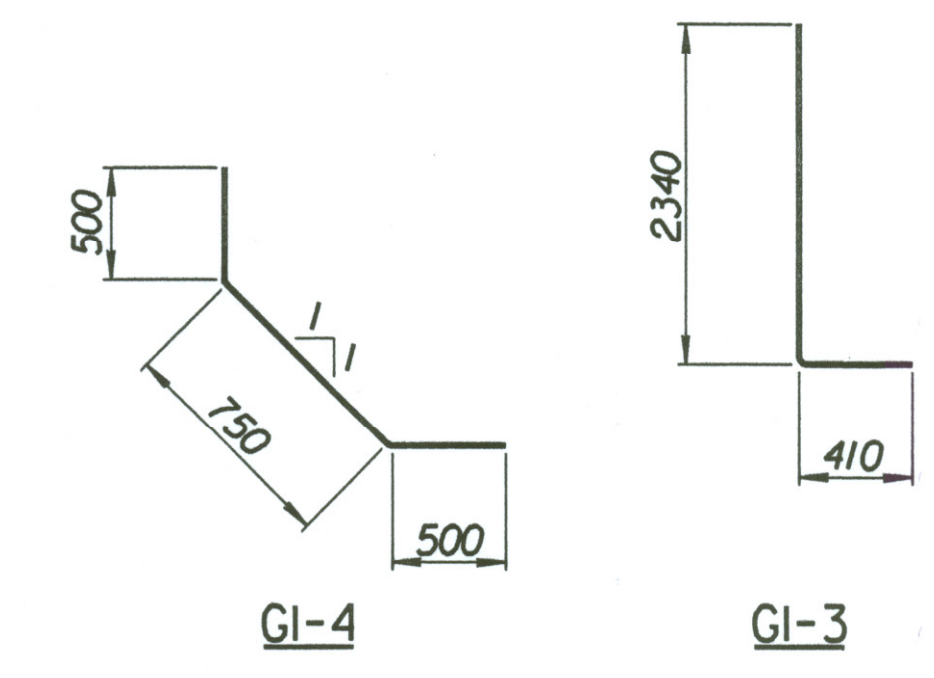
LAYOUT INFORMATION				
Point No.	North Coordinate	East Coordinate	Station	Offset
1	511364.360	491383.836	15+382.019	14.235 Lt.
2	511370.412	491383.073	15+382.019	20.335 Lt.
3	511372.900	491402.404	15+401.617	20.335 Lt.
4	511366.852	491403.199	15+401.617	14.235 Lt.

REINFORCING STEEL							
Straight Bars				Bent Bars			
Mark	Size	Number	Length	Mark	Size	Number	Length
GI-1	*22	196	6020	GI-3	*25	130	2750
GI-2	*22	80	10 500	GI-4	*19	66	1750
GI-5	*16	56	9650				
GI-6	*19	66	4070				
GI-7	*13	66	4500				

WALL QUANTITIES		
Item	Quantity	Unit
Concrete (Grade 30(AE))	93.9	m ³
Reinforcing Steel (Grade 420)	9557	kg
Class III Excavation	27.4	m ³



Note:
Field Cut #13GI-7 bars to provide 50 mm clearance at Top of Wall.



BENDING DIAGRAMS
All dimensions are out to out of bars.

Drawn by: wll
Plotted by: drp 3-25-2002
i:/1997/97.362/001/bridge/maizerd/MIWwall-7

No.	Revisions	By	Date
CITY OF WICHITA			
MAIZE NORTHWEST WALL			
STA. 15+382.019 TO STA. 15+401.617			
SEDGWICK COUNTY			
Professional Engineering Consultants, P.A. 303 S. TOPEKA • WICHITA, KANSAS 67202 316-262-2691 • FAX 316-262-3003			
Designed by	P.D.F.	Checked by	R.A.S.
Drawn by	W.L.L.	Date	Apr. 2002
		Job No.	97362