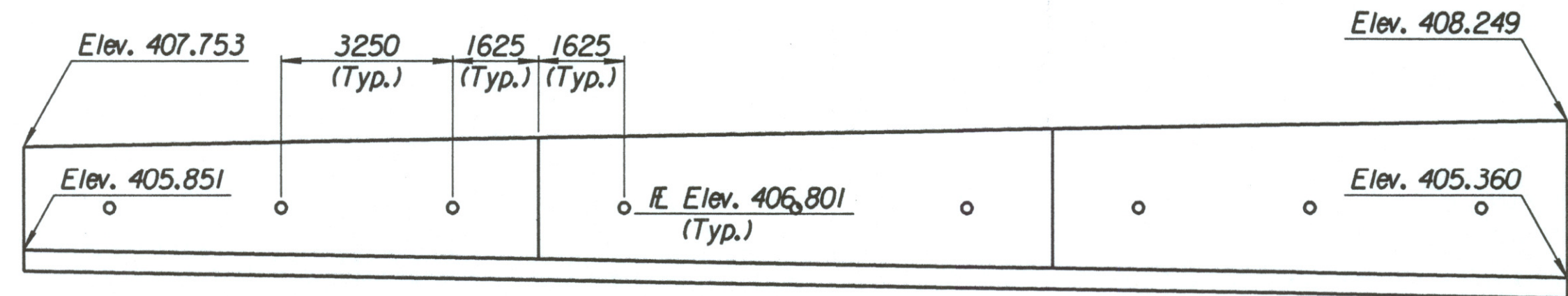
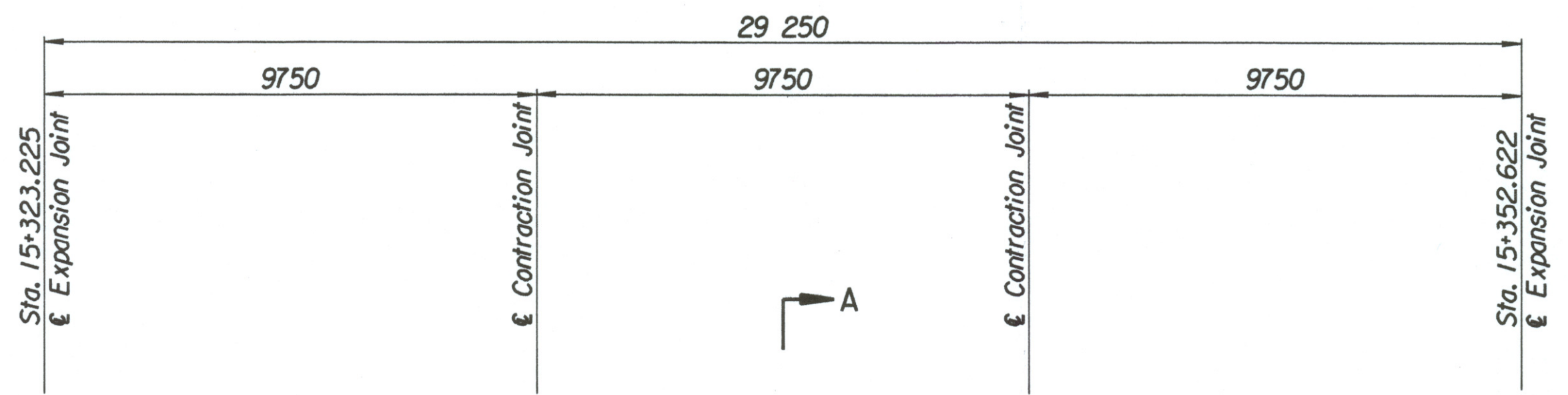


STATE	PROJECT NO.	YEAR	SHEET NO.	TOTAL SHEETS
KANSAS	54-87 K-6657-01	2002	279	1122

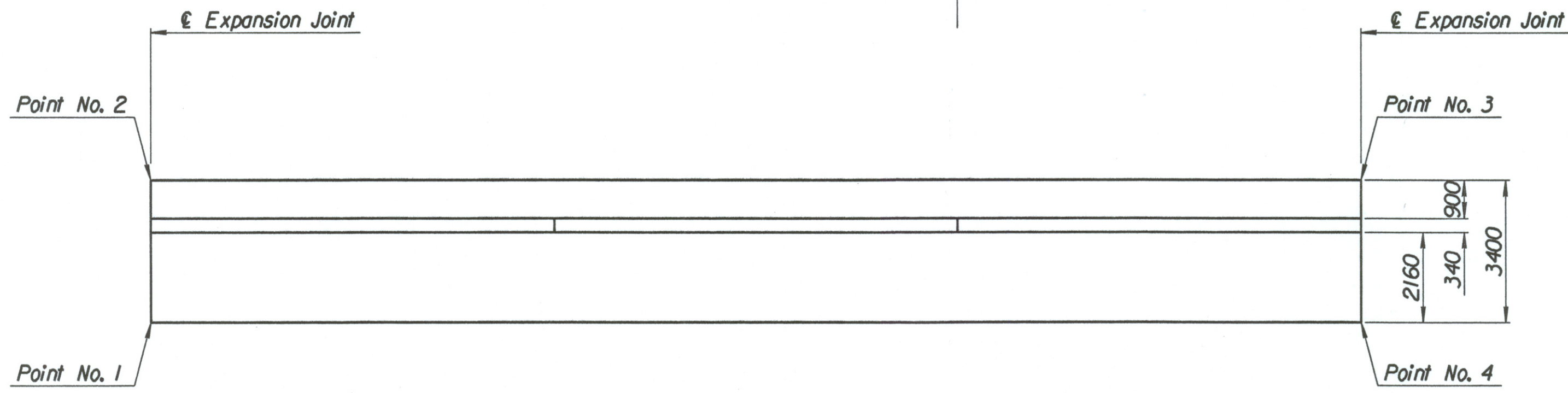
LAYOUT INFORMATION				
Point No.	North Coordinate	East Coordinate	Station	Offset
1	511359.251	491325.479	15+323.225	15.995 Lt.
2	511362.630	491325.108	15+323.225	19.395 Lt.
3	511365.940	491354.163	15+352.622	19.395 Lt.
4	511362.563	491354.561	15+352.622	15.995 Lt.

REINFORCING STEEL							
Straight Bars				Bent Bars			
Mark	Size	Number	Length	Mark	Size	Number	Length
J1-1	*16	246	3320	J1-3	*16	195	1350
J1-2	*13	44	14960	J1-4	*13	99	1200
J1-5	*16	99	Varies				
J1-6	*13	99	Varies				
J1-7	*13	54	9650				

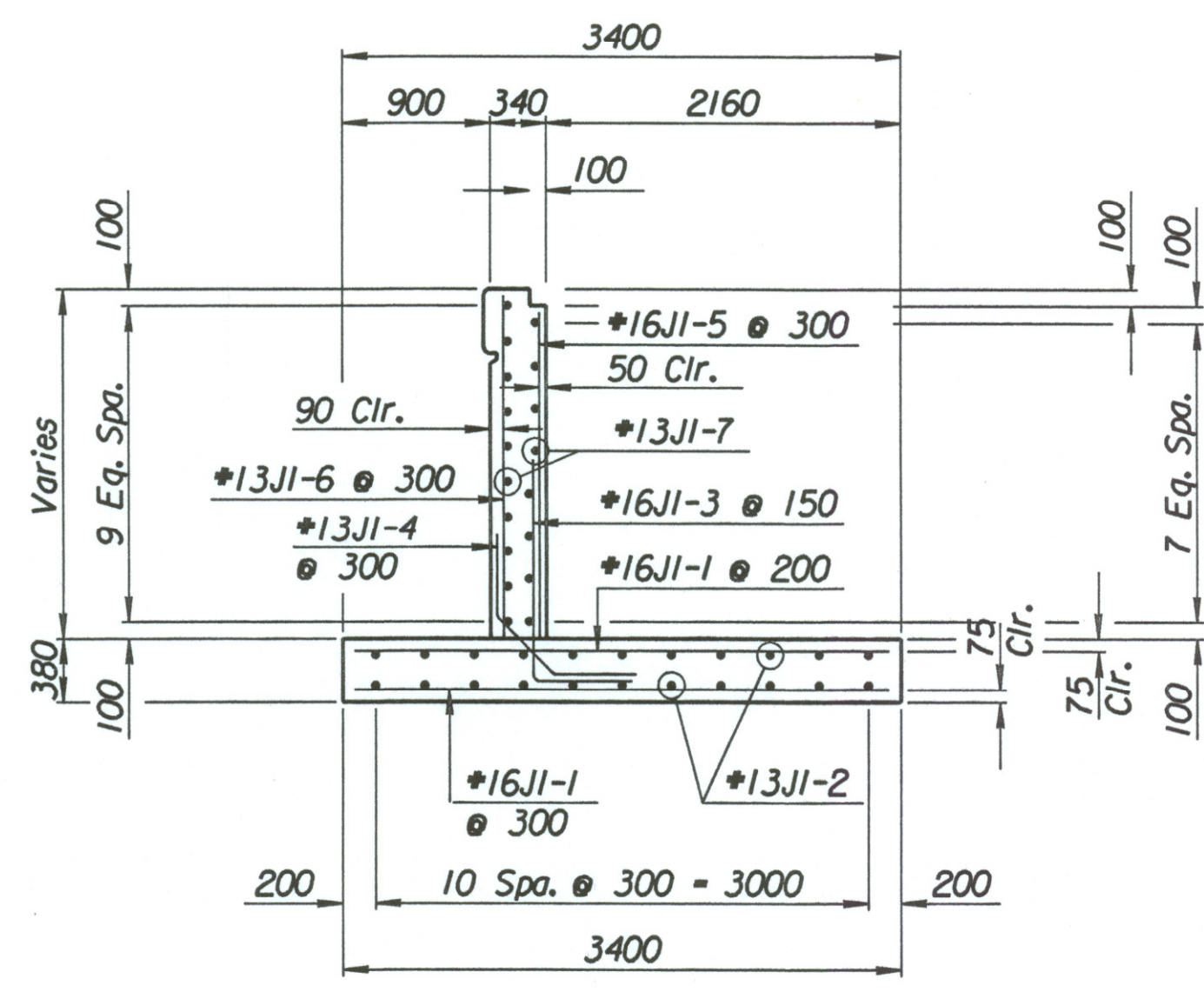
WALL QUANTITIES		
Item	Quantity	Unit
Concrete (Grade 30)(AE)	61.3	m ³
Reinforcing Steel (Grade 420)	3541	kg
Class III Excavation	0.0	m ³



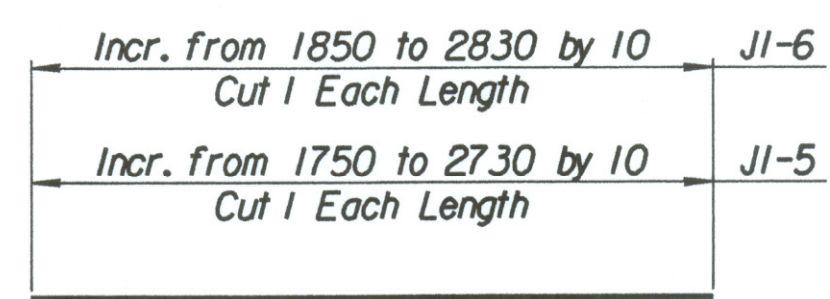
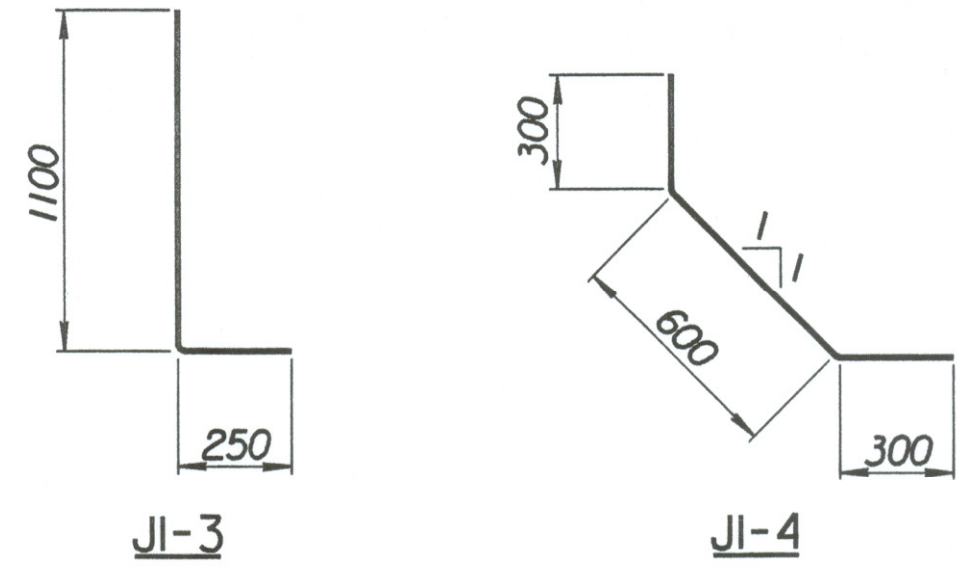
ELEVATION



PLAN



SECTION A-A



BENDING DIAGRAMS
All dimensions are out to out of bars.

Drawn by: wil
 Plotted by: drp
 3-25-2002
 i:\1997\97362\001\bridge\maizerd\mwwall-9

No.	Revisions	By	Date

CITY OF WICHITA

MAIZE NORTHWEST WALL
 STA. 15+323.225 TO STA. 15+352.622
 SEDGWICK COUNTY

Professional Engineering Consultants, P.A.
 303 S. TOPEKA • WICHITA, KANSAS 67202
 316-262-2691 • FAX 316-262-3003

Designed by	P.D.F.	Checked by	R.A.S.
Drawn by	W.L.L.	Date	Apr., 2002
		Job No.	97362