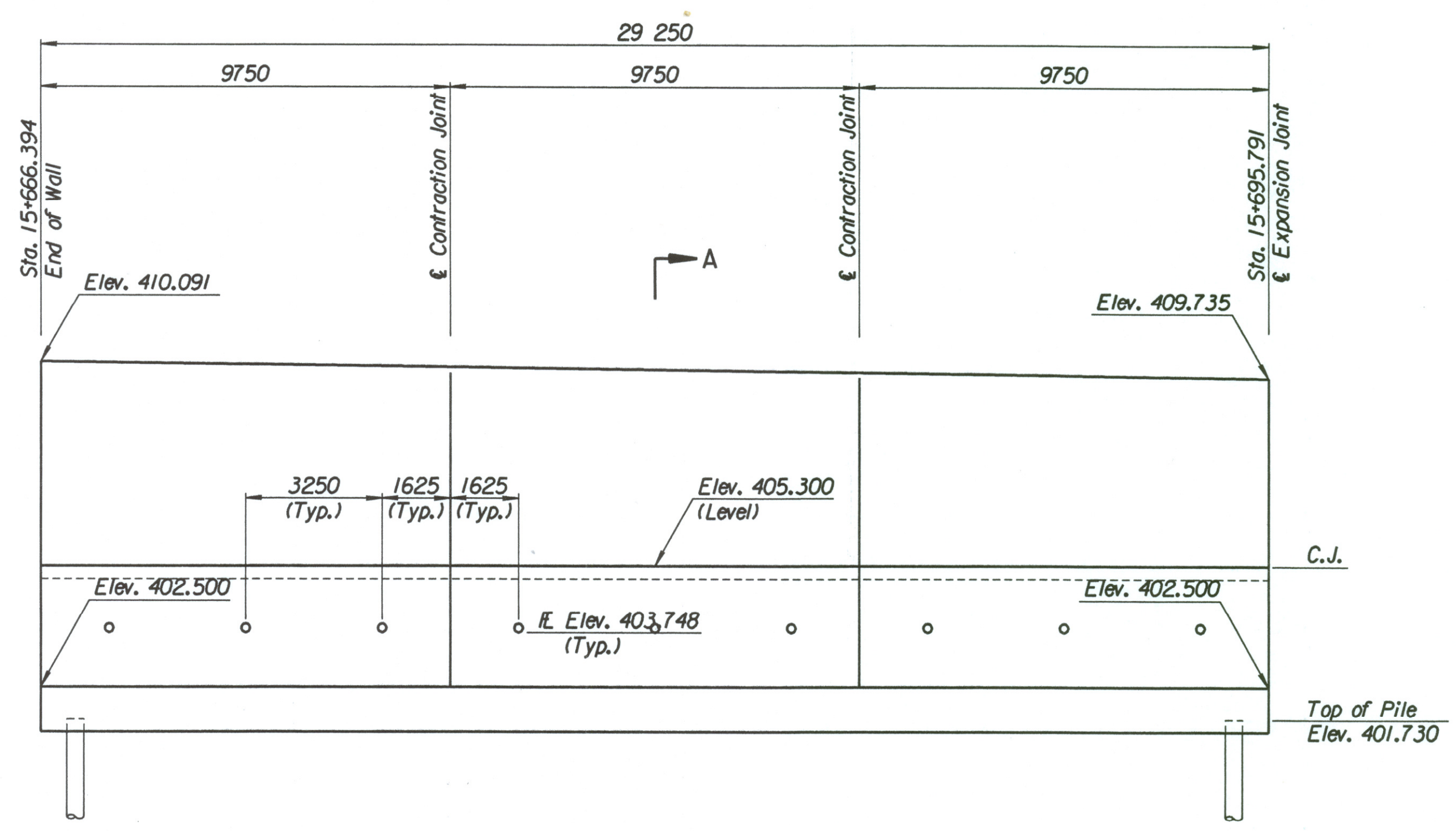


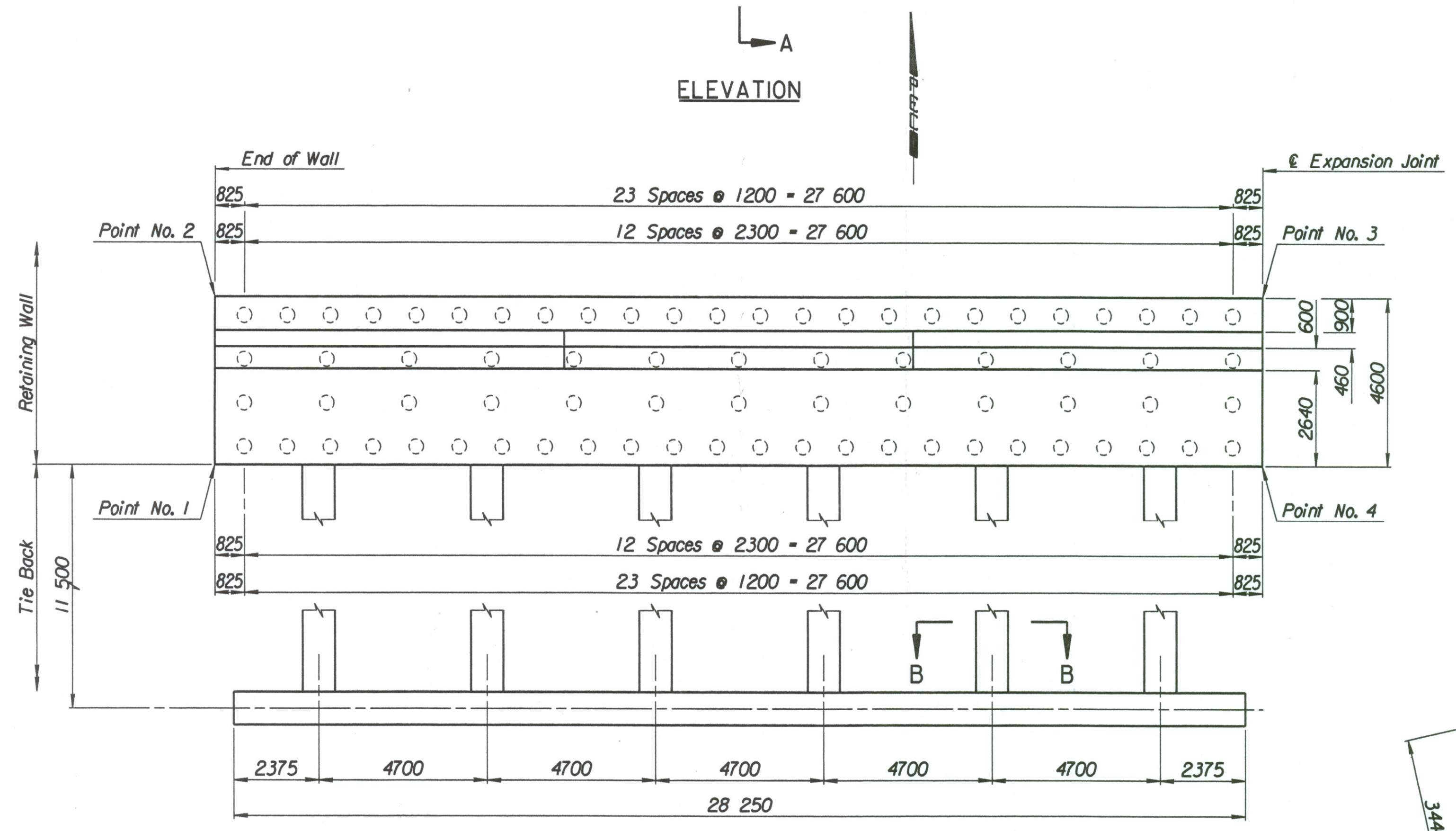
LAYOUT INFORMATION				
Point No.	North Coordinate	East Coordinate	Station	Offset
1	511411.079	491663.146	15+666.394	14,795 Lt.
2	511415.585	491662.222	15+666.394	19,395 Lt.
3	511421.571	491690.846	15+695.791	19,395 Lt.
4	511417.072	491691.805	15+695.791	14,795 Lt.

REINFORCING STEEL					
Straight Bars			Bent Bars		
Mark	Size	Number	Mark	Size	Number
A2-1	*25	342	A2-3	*29	195
A2-2	*25	60	A2-4	*19	195
A2-6	*29	195	A2-5	*29	195
A2-7	*13	99	A2-9	*19	99
A2-8	*16	147			
A2-10	*19	99			
A2-11	*13	99			
A2-12	*29	72			

WALL QUANTITIES		
Item	Quantity	Unit
Pressure Grouted Pile (406 mm)	888.0	m
Concrete (Grade 30)(AE)	265.4	m ³
Reinforcing Steel (Grade 420)	27 992	kg
Class III Excavation	376.1	m ³



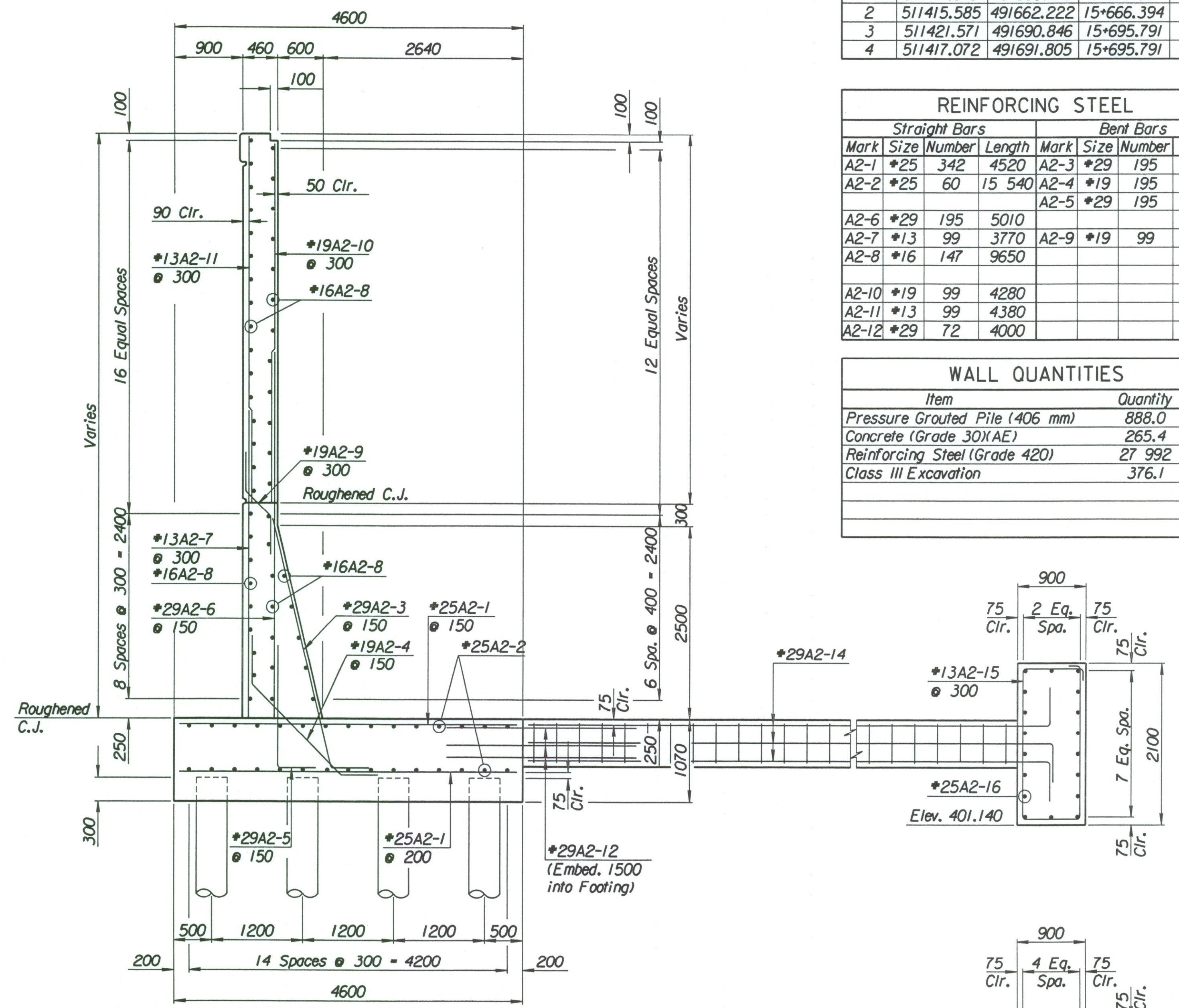
ELEVATION



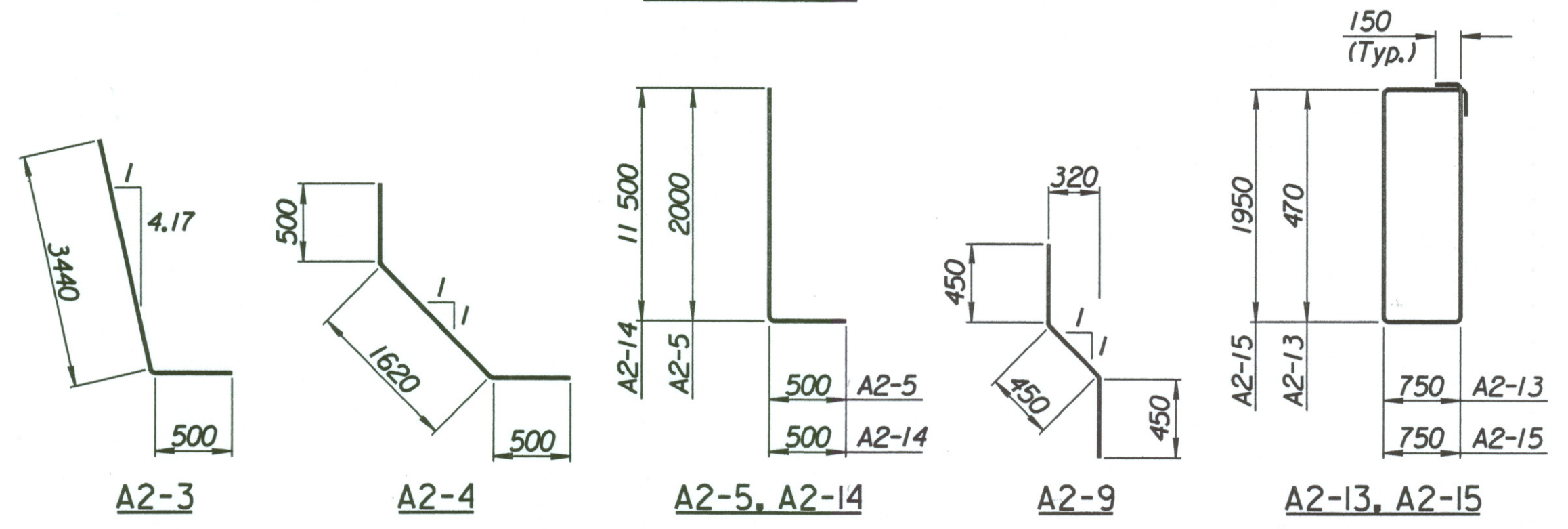
PLAN

TIE BACK REINFORCING STEEL							
Straight Bars				Bent Bars			
Mark	Size	Number	Length	Mark	Size	Number	Length
A2-16	*25	36	15 070	A2-14	*29	72	12 000
				A2-15	*13	94	5700

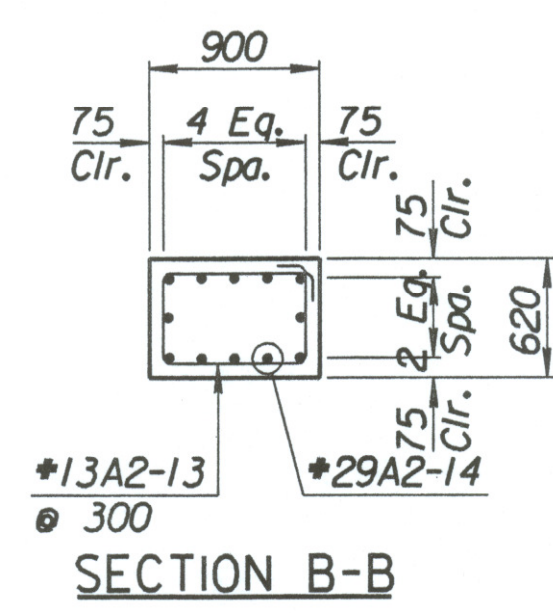
TIE BACK QUANTITIES		
Item	Quantity	Unit
Concrete (Grade 30)(AE)	90.4	m ³
Reinforcing Steel (Grade 420)	7660	kg



SECTION A-A



BENDING DIAGRAMS
All dimensions are out to out of bars.



SECTION B-B

Drawn by: wll
 Plotted by: drp 3-25-2002
 I:\1997\97362\001\bridge\maizerd\NEWall-8

No.	Revisions	By	Date

CITY OF WICHITA

MAIZE NORTHEAST WALL

STA. 15+666.394 TO STA. 15+695.791
SEDGWICK COUNTY

Professional Engineering Consultants, P.A.
303 S. TOPEKA • WICHITA, KANSAS 67202
316-262-2691 • FAX 316-262-3003

Designed by	P.D.F.	Checked by	R.A.S.
Drawn by	W.L.L.	Date	Apr. 2002
		Job No.	97362