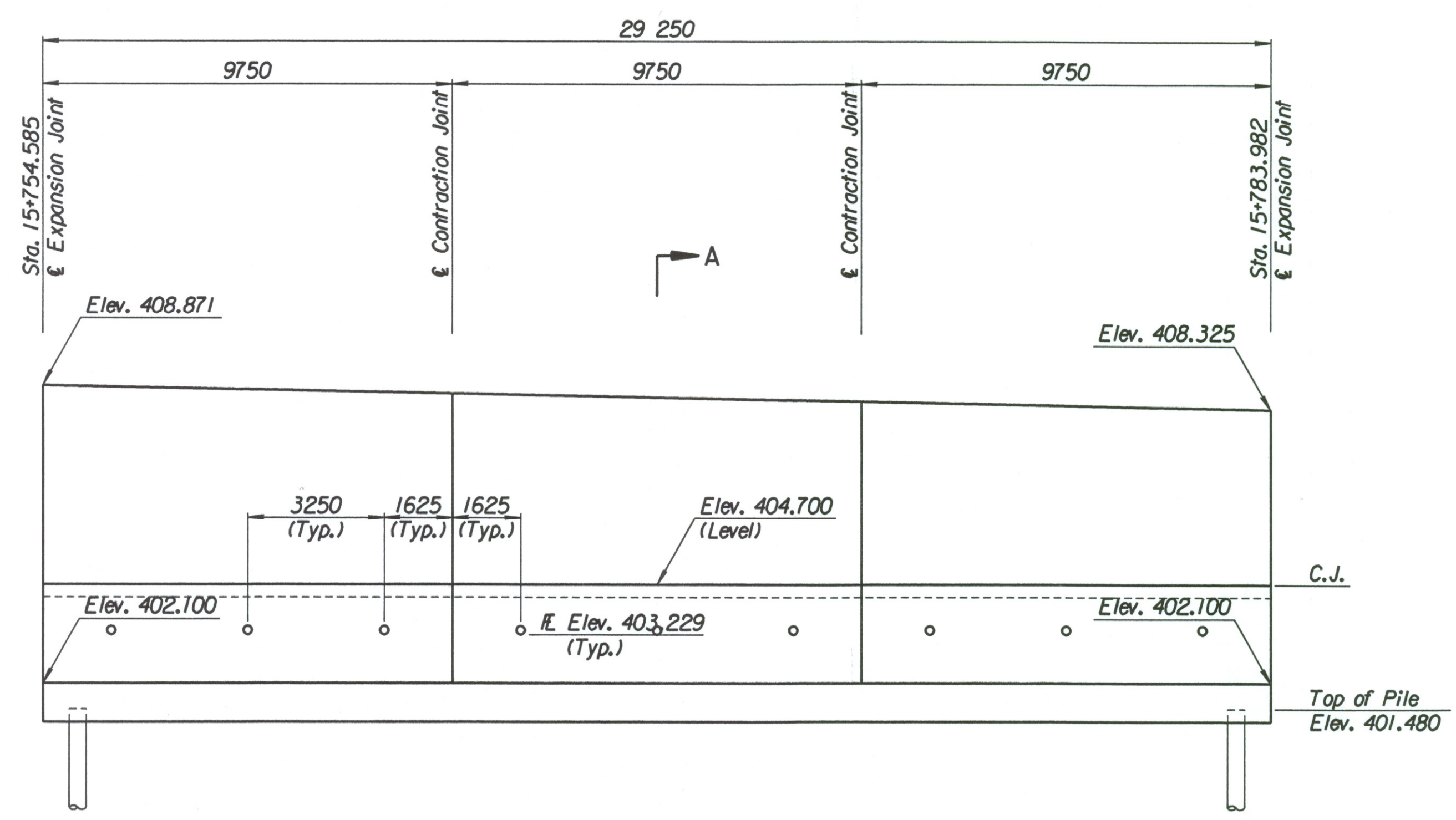


STATE	PROJECT NO.	YEAR	SHEET NO.	TOTAL SHEETS
KANSAS	54-87 K-6657-01	2002	284	1122

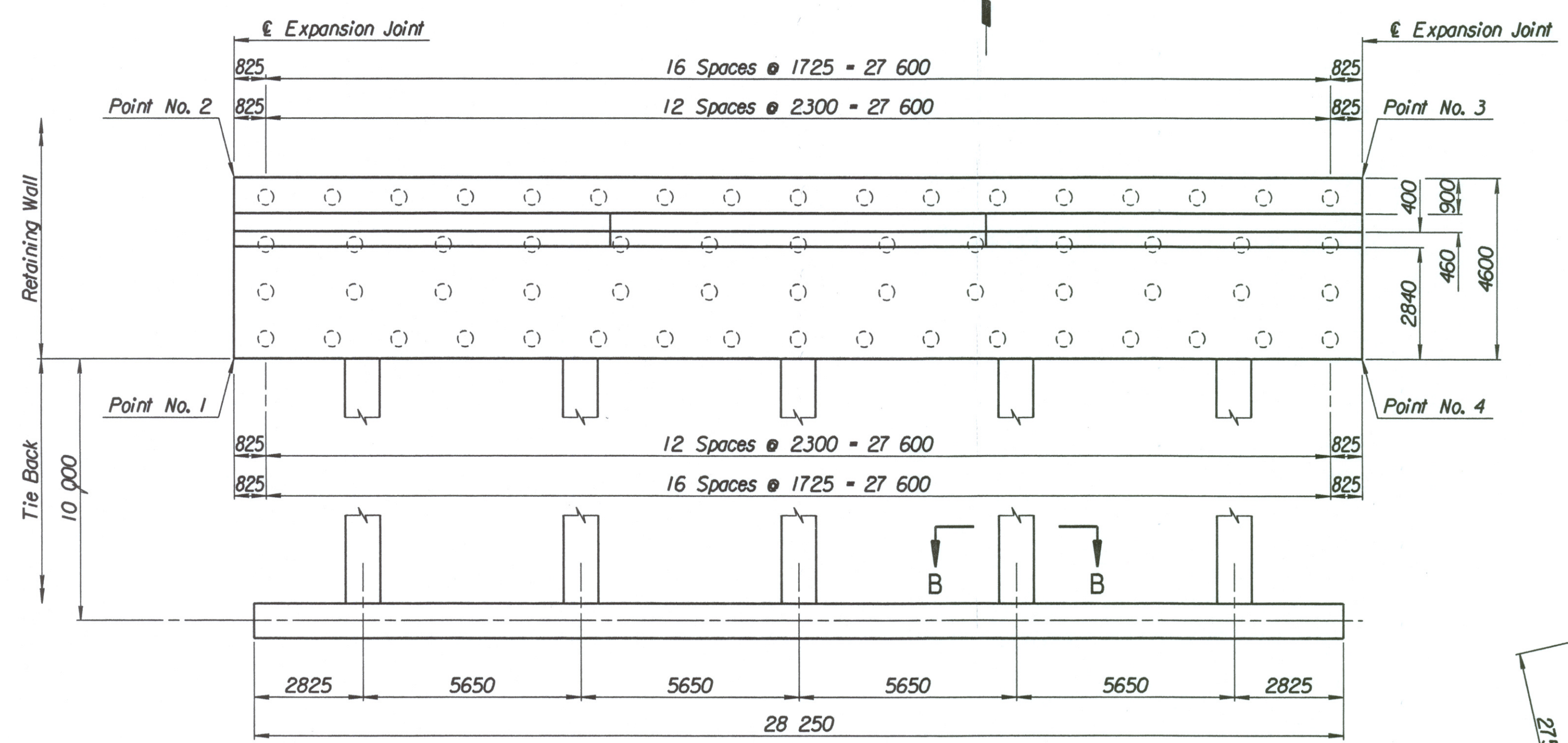
LAYOUT INFORMATION				
Point No.	North Coordinate	East Coordinate	Station	Offset
1	511429.741	491748.976	15+754.585	14.795 Lt.
2	511434.224	491747.946	15+754.585	19.395 Lt.
3	511440.891	491776.418	15+783.982	19.395 Lt.
4	511436.416	491777.485	15+783.982	14.795 Lt.

REINFORCING STEEL							
Straight Bars				Bent Bars			
Mark	Size	Number	Length	Mark	Size	Number	Length
D2-1	*25	294	4520	D2-3	*29	195	3250
D2-2	*25	60	15 540	D2-4	*19	195	2320
				D2-5	*25	195	1910
D2-6	*25	195	4600				
D2-7	*13	99	3750	D2-9	*19	99	1350
D2-8	*16	132	9650				
D2-10	*19	99	3480				
D2-11	*13	99	3580				
D2-12	*29	60	4000				

WALL QUANTITIES		
Item	Quantity	Unit
Pressure Grouted Pile (406 mm)	720.0	m
Concrete (Grade 30)(AE)	222.6	m ³
Reinforcing Steel (Grade 420)	23 227	kg
Class III Excavation	277.0	m ³



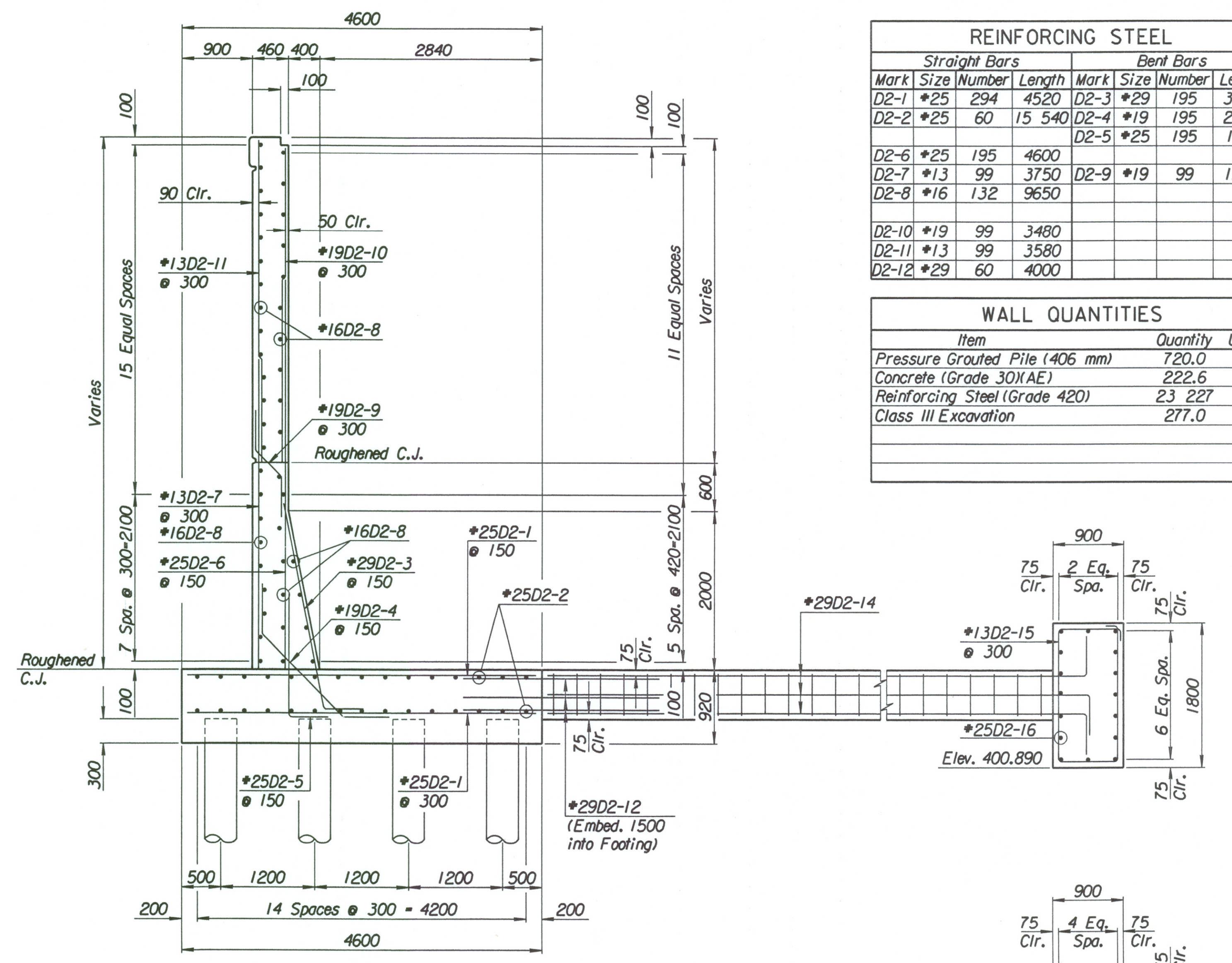
ELEVATION



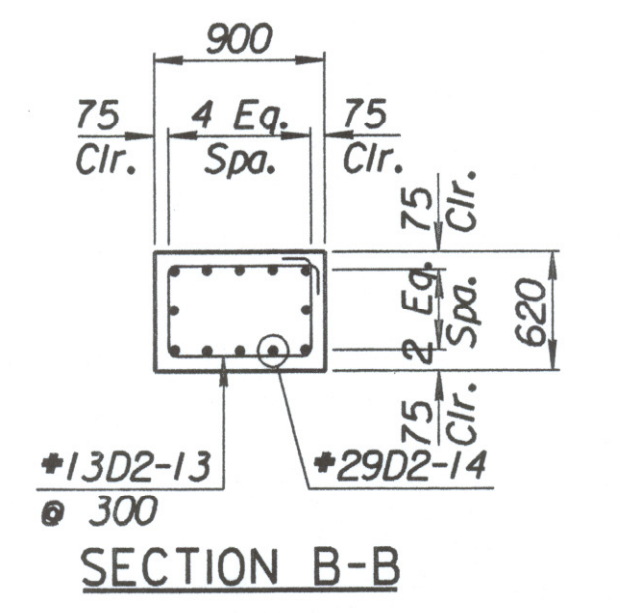
PLAN

TIE BACK REINFORCING STEEL							
Straight Bars			Bent Bars				
Mark	Size	Number	Length	Mark	Size	Number	Length
D2-16	*25	32	15 040	D2-13	*13	160	2740
				D2-14	*29	60	10 500
				D2-15	*13	94	5100

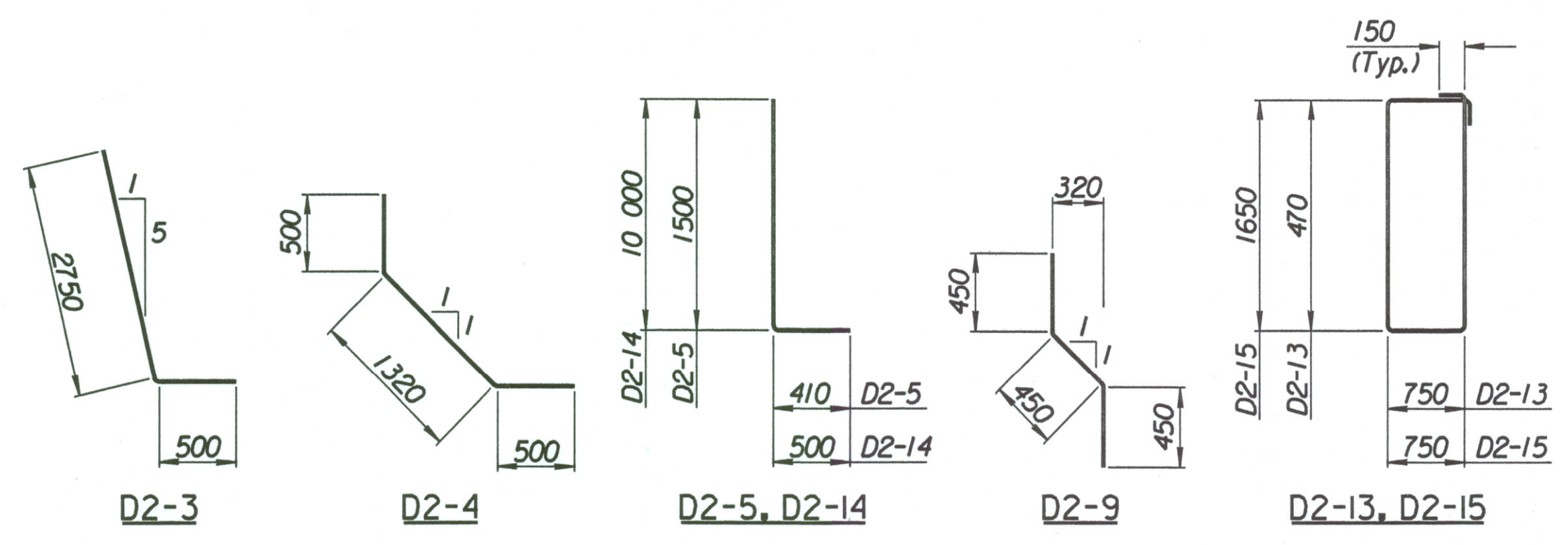
TIE BACK QUANTITIES		
Item	Quantity	Unit
Concrete (Grade 30)(AE)	72.4	m ³
Reinforcing Steel (Grade 420)	6012	kg



SECTION A-A



SECTION B-B



BENDING DIAGRAMS
All dimensions are out to out of bars.

Drawn by: wil
 Plotted by: drp 3-25-2002
 i:/1997/gr362/001/bridge/maizerd/NEWall-5

No.	Revisions	By	Date

CITY OF WICHITA

MAIZE NORTHEAST WALL

STA. 15+754.585 TO STA. 15+783.982
SEDGWICK COUNTY

Professional Engineering Consultants, P.A.
303 S. TOPEKA • WICHITA, KANSAS 67202
 316-262-2691 • FAX 316-262-3003

Designed by	P.D.F.	Checked by	R.A.S.
Drawn by	W.L.L.	Date	Apr. 2002
		Job No.	97362