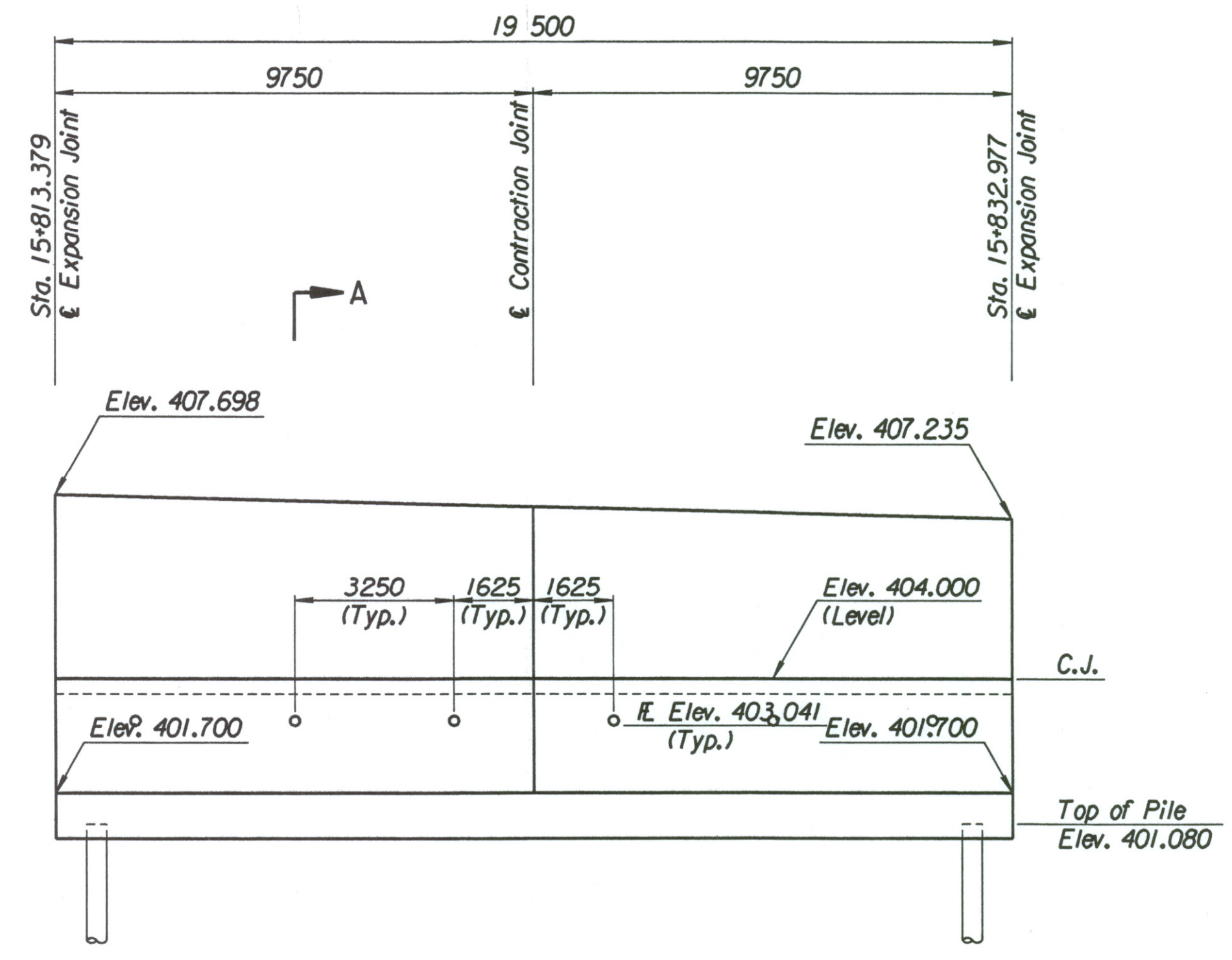


STATE	PROJECT NO.	YEAR	SHEET NO.	TOTAL SHEETS
KANSAS	54-87 K-6657-01	2002	286	1122

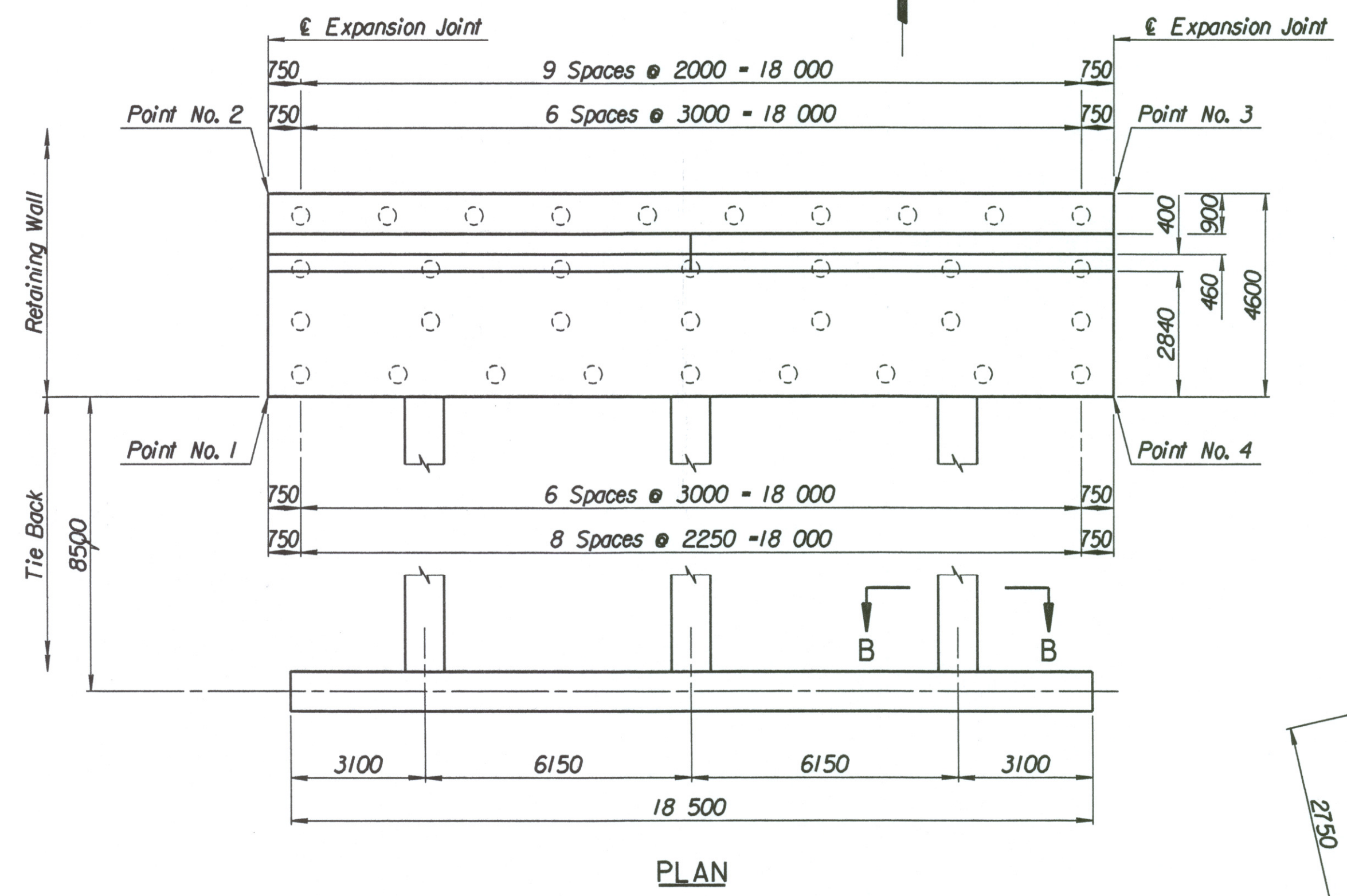
LAYOUT INFORMATION				
Point No.	North Coordinate	East Coordinate	Station	Offset
1	511443.317	491805.939	15+813.379	14.795 Lt.
2	511447.783	491804.837	15+813.379	19.395 Lt.
3	511452.504	491823.752	15+832.977	19.395 Lt.
4	511448.044	491824.878	15+832.977	14.795 Lt.

REINFORCING STEEL							
Straight Bars				Bent Bars			
Mark	Size	Number	Length	Mark	Size	Number	Length
F2-1	*25	164	4520	F2-3	*25	130	3160
F2-2	*25	60	10 670	F2-4	*22	66	2320
F2-6	*22	130	3870	F2-5	*22	130	1660
F2-7	*13	66	3370	F2-9	*16	66	1350
F2-8	*16	80	9650				
F2-10	*19	66	3080				
F2-11	*13	66	3180				
F2-12	*29	36	4000				

WALL QUANTITIES		
Item	Quantity	Unit
Pressure Grouted Pile (406 mm)	396.0	m
Concrete (Grade 30(AE))	141.9	m <sup>3</sup>
Reinforcing Steel (Grade 420)	12 723	kg
Class III Excavation	156.8	m <sup>3</sup>



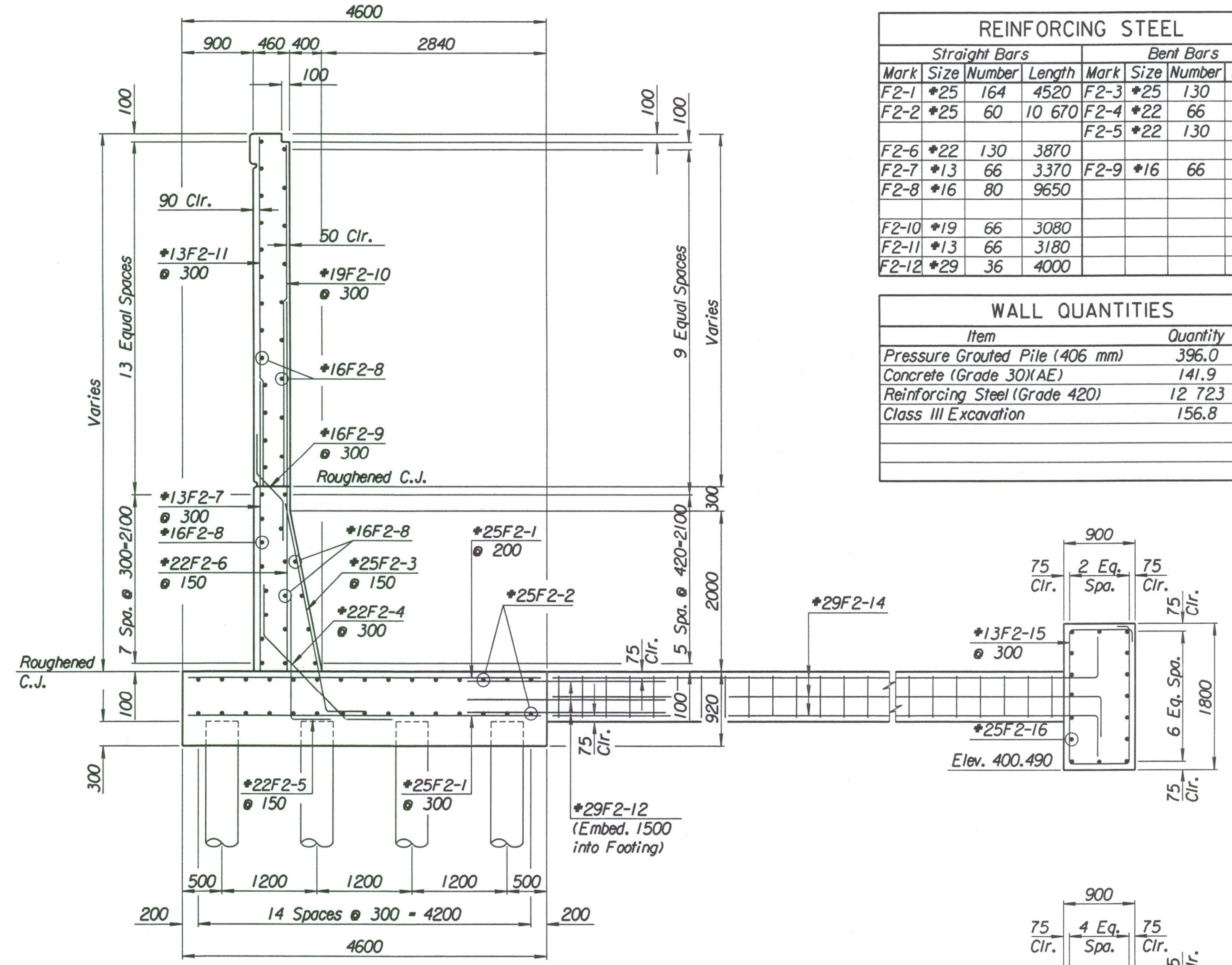
ELEVATION



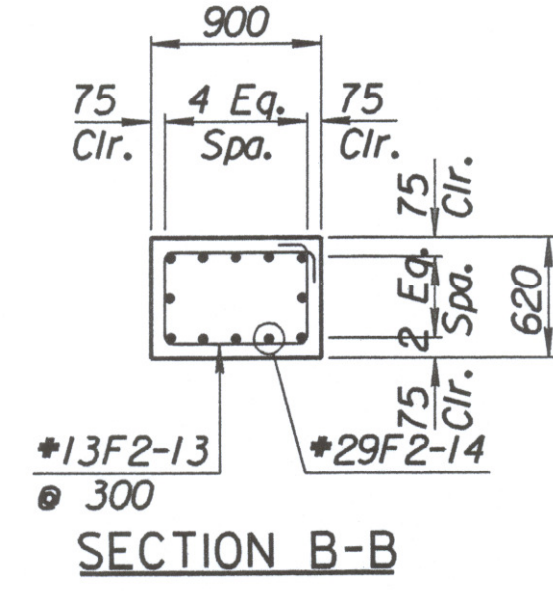
PLAN

TIE BACK REINFORCING STEEL					
Straight Bars			Bent Bars		
Mark	Size	Number	Length	Mark	Size
F2-16	*25	32	10 170	F2-13	*13
				F2-14	*29
				F2-15	*13

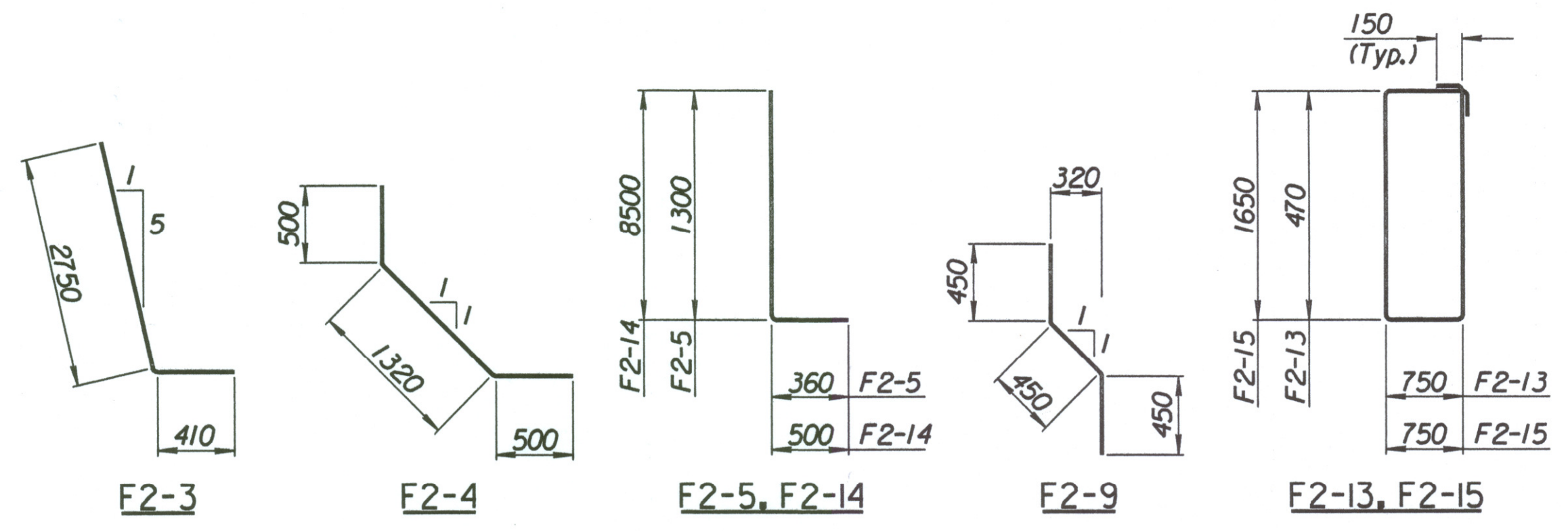
TIE BACK QUANTITIES		
Item	Quantity	Unit
Concrete (Grade 30(AE))	43.4	m <sup>3</sup>
Reinforcing Steel (Grade 420)	3472	kg



SECTION A-A



SECTION B-B



BENDING DIAGRAMS  
All dimensions are out to out of bars.

No.	Revisions	By	Date
CITY OF WICHITA			
<b>MAIZE NORTHEAST WALL</b>			
STA. 15+813.379 TO STA. 15+832.977			
SEDGWICK COUNTY			
 <b>Professional Engineering Consultants, P.A.</b> 303 S. TOPEKA • WICHITA, KANSAS 67202 316-262-2691 • FAX 316-262-3003			
Designed by	P.D.F.	Checked by	R.A.S.
Drawn by	W.L.L.	Date	Apr. 2002
		Job No.	97362

Drawn by: wil  
 Plotted by: drp 3-25-2002  
 i:\1997\97362\001\bridge\maizerd\NEWall-3