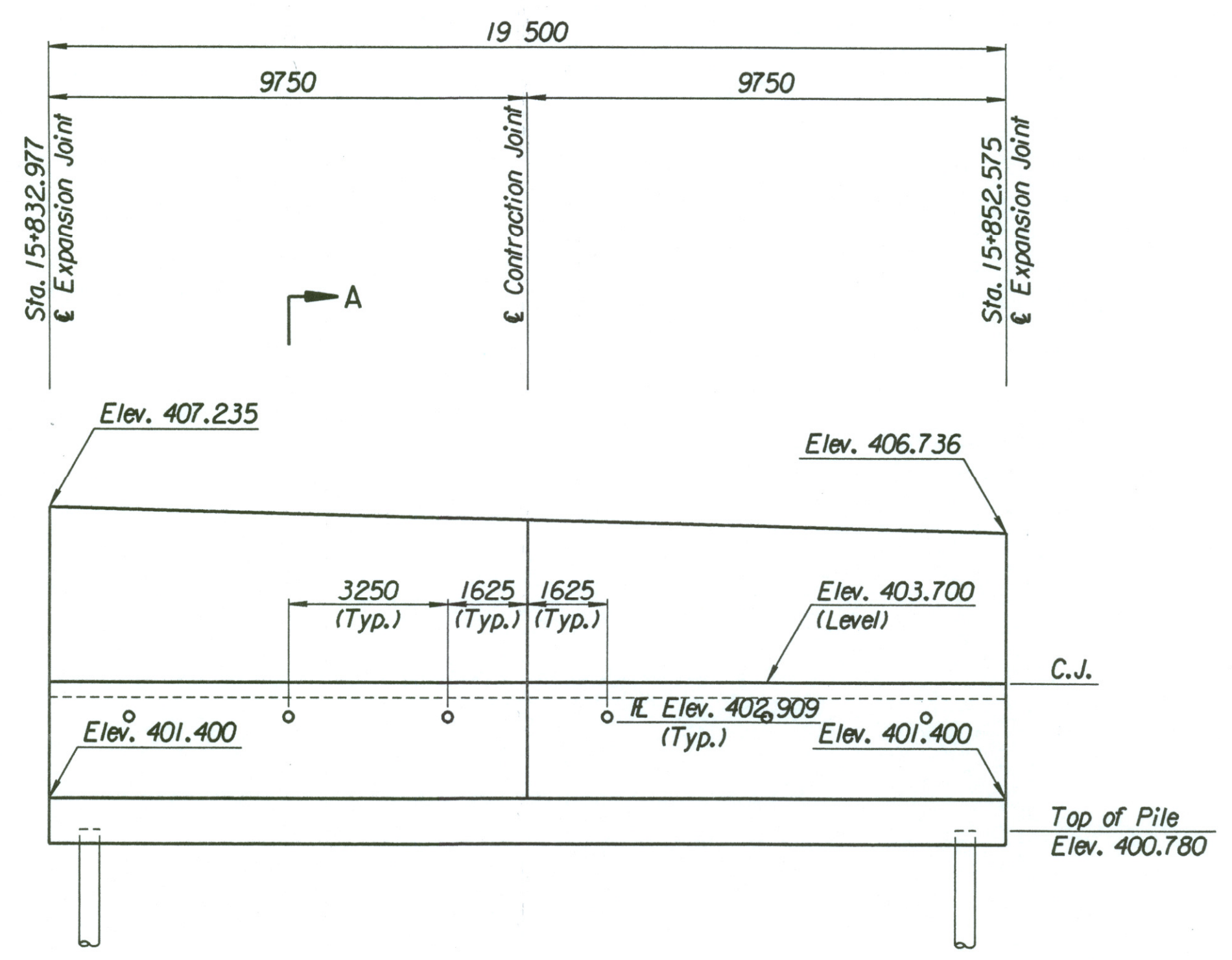


STATE	PROJECT NO.	YEAR	SHEET NO.	TOTAL SHEETS
KANSAS	54-87 K-6657-01	2002	287	1122

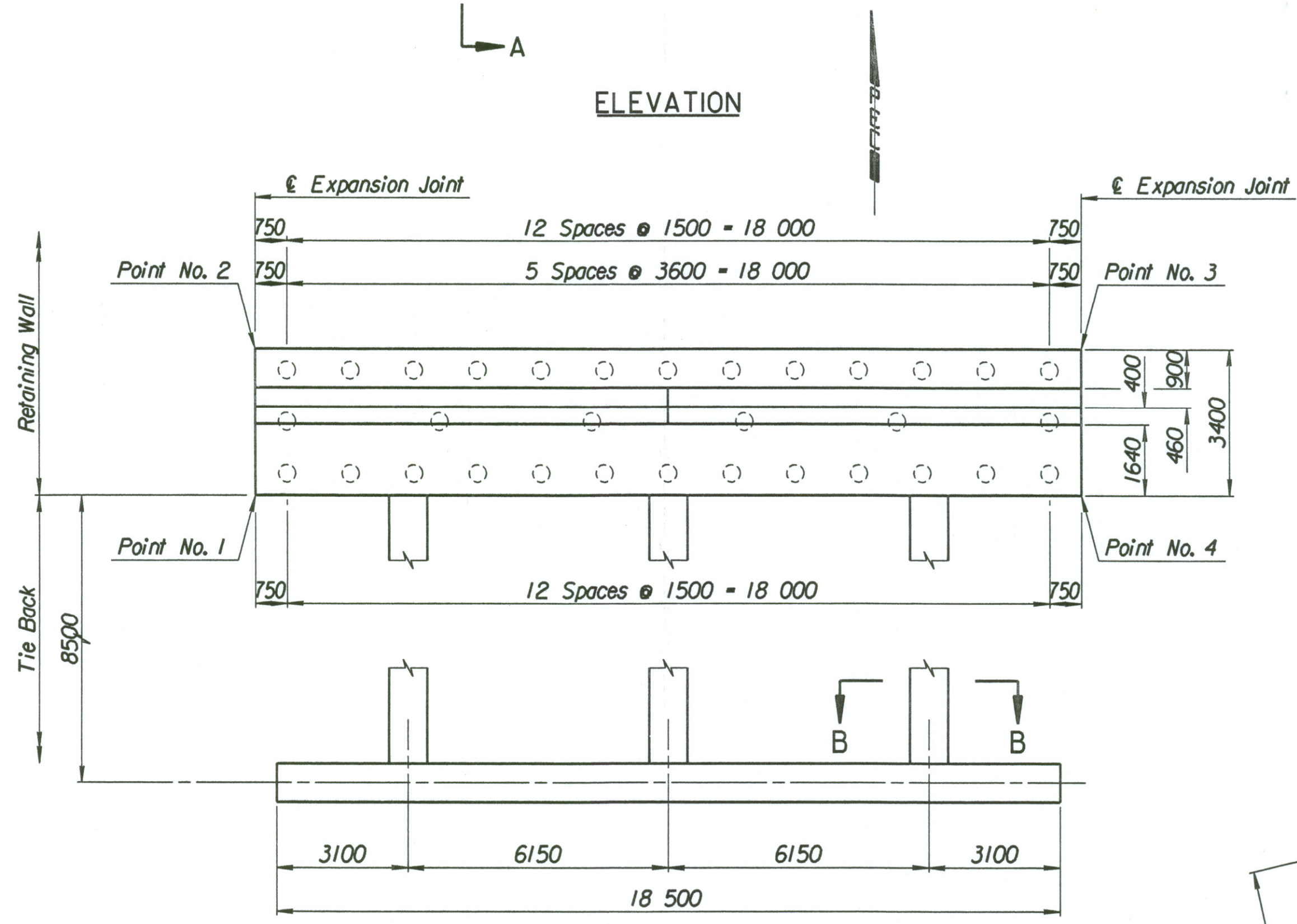
LAYOUT INFORMATION				
Point No.	North Coordinate	East Coordinate	Station	Offset
1	511449.207	491824.584	15+832.977	15.995 Lt.
2	511452.504	491823.752	15+832.977	19.395 Lt.
3	511457.324	491842.642	15+852.575	19.395 Lt.
4	511454.032	491843.492	15+852.575	15.995 Lt.

REINFORCING STEEL					
Straight Bars			Bent Bars		
Mark	Size	Length	Mark	Size	Length
G2-1	*25	164	G2-3	*25	130
G2-2	*25	44	G2-4	*22	66
			G2-5	*19	130
G2-6	*19	130			
G2-7	*13	66	G2-9	*16	66
G2-8	*16	78			
G2-10	*19	66			
G2-11	*13	66			
G2-12	*29	36			

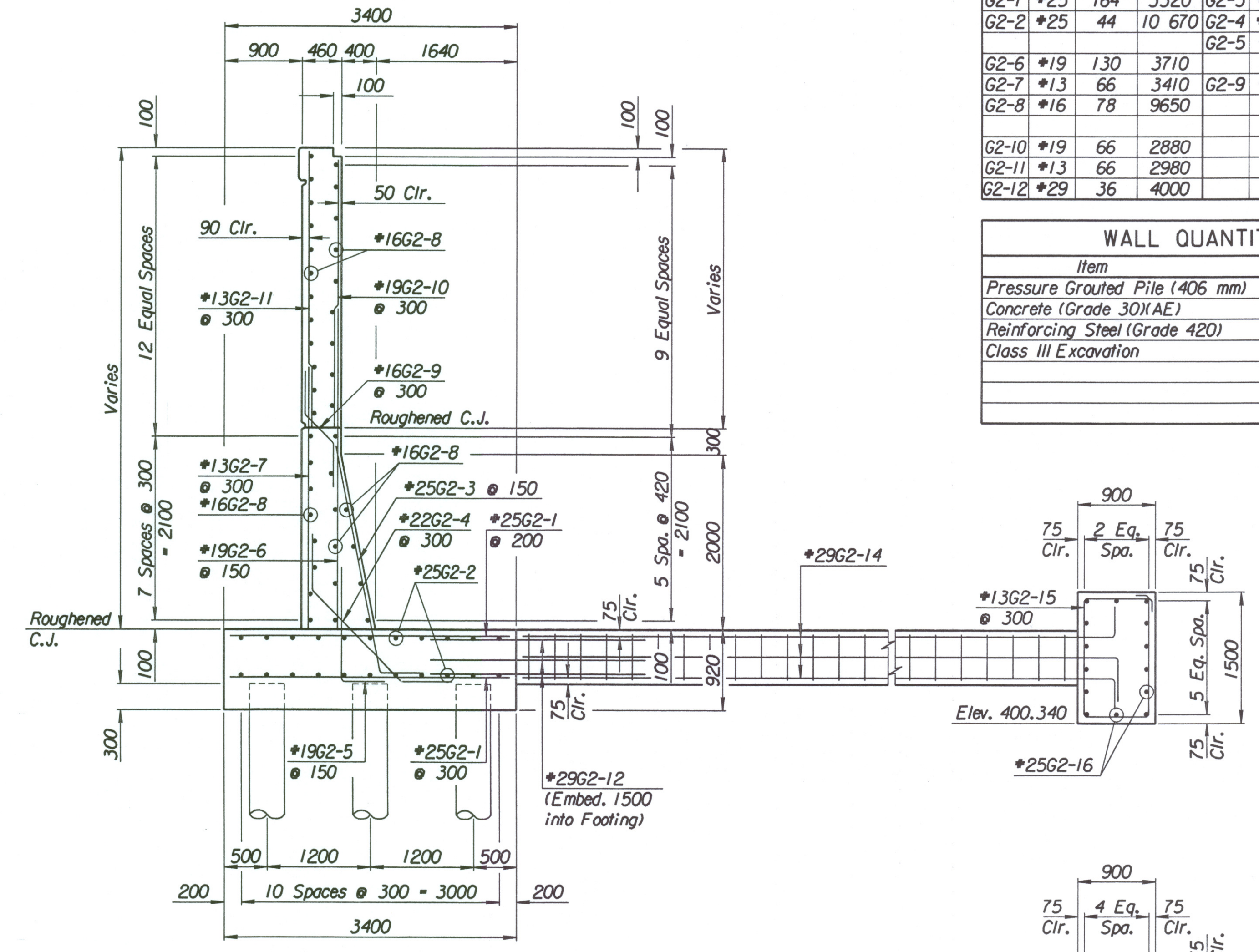
WALL QUANTITIES		
Item	Quantity	Unit
Pressure Grouted Pile (406 mm)	384.0	m
Concrete (Grade 30(AE))	118.7	m <sup>3</sup>
Reinforcing Steel (Grade 420)	10 519	kg
Class III Excavation	111.7	m <sup>3</sup>



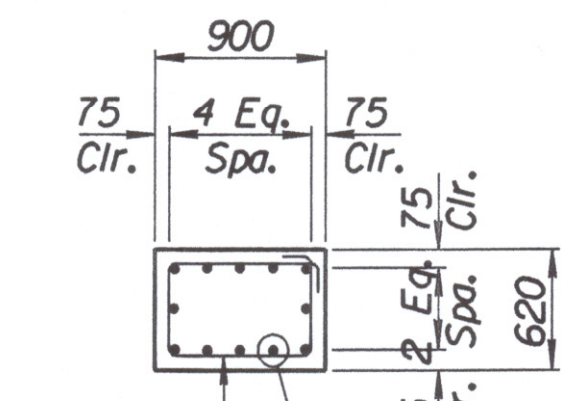
ELEVATION



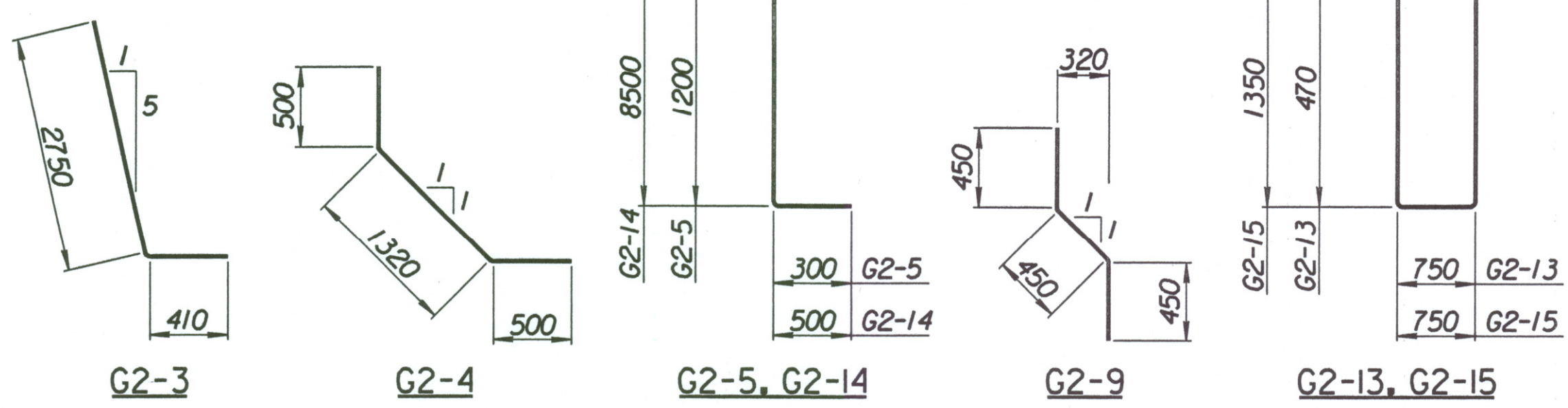
PLAN



SECTION A-A



SECTION B-B



TIE BACK REINFORCING STEEL							
Straight Bars				Bent Bars			
Mark	Size	Number	Length	Mark	Size	Number	Length
G2-16	*25	28	10 170	G2-13	*13	81	2740
				G2-14	*29	36	9000
				G2-15	*13	63	4500

TIE BACK QUANTITIES		
Item	Quantity	Unit
Concrete (Grade 30(AE))	38.5	m <sup>3</sup>
Reinforcing Steel (Grade 420)	3273	kg

No.	Revisions	By	Date
CITY OF WICHITA			
<b>MAIZE NORTHEAST WALL</b>			
STA. 15+832.977 TO STA. 15+852.575			
SEDGWICK COUNTY			
 <b>Professional Engineering Consultants, P.A.</b> <small>303 S. TOPEKA • WICHITA, KANSAS 67202  316-262-2691 • FAX 316-262-3003</small>			
Designed by	P.D.F.	Checked by	R.A.S.
Drawn by	W.L.L.	Date	Apr. 2002
		Job No.	97362

Drawn by: wll  
 Plotted by: drp  
 Date: 3-25-2002  
 File: /1997/97362/001/bridge/maizerd/NEWall-2