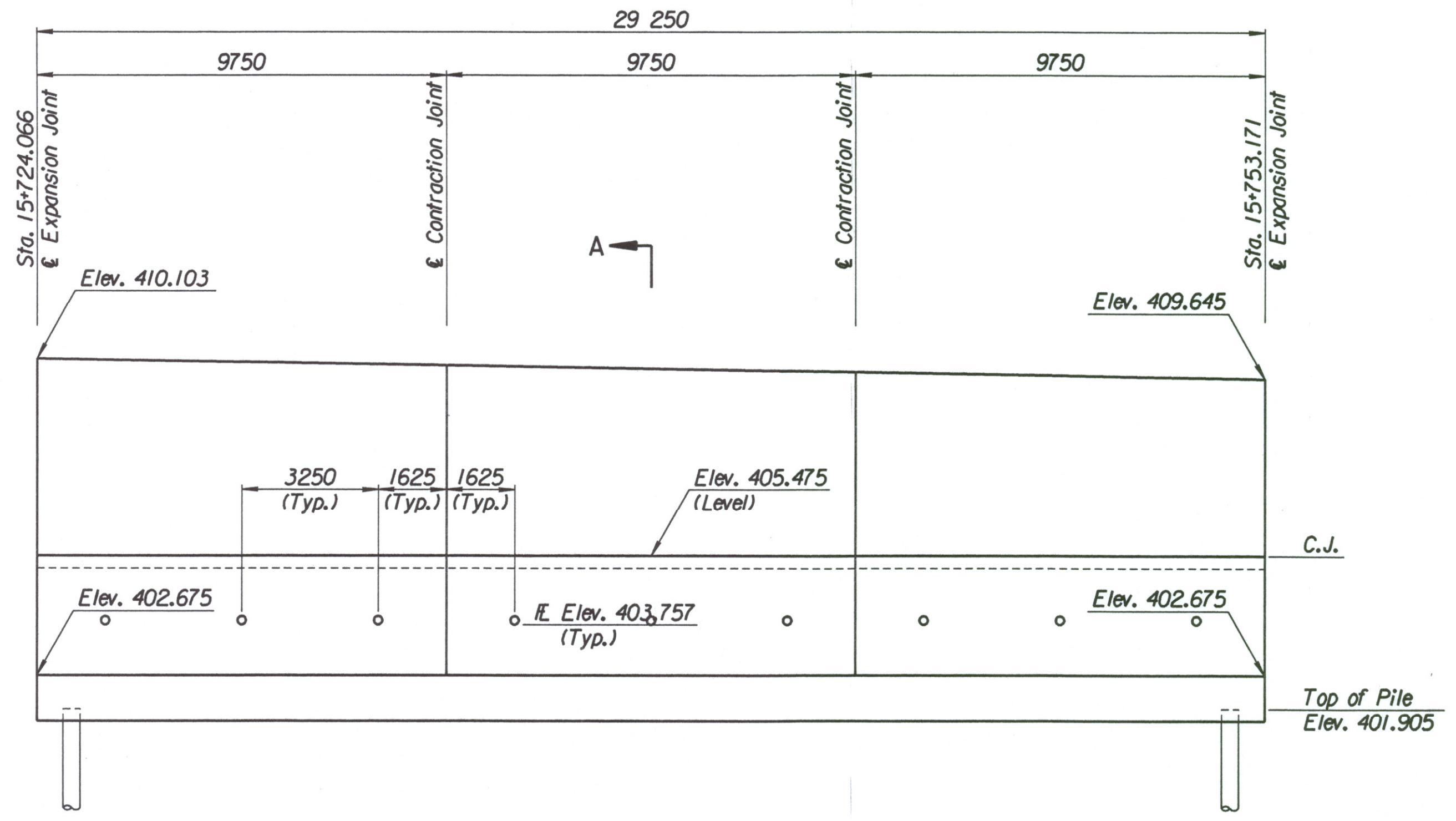


STATE	PROJECT NO.	YEAR	SHEET NO.	TOTAL SHEETS
KANSAS	54-87 K-6657-01	2002	294	1122

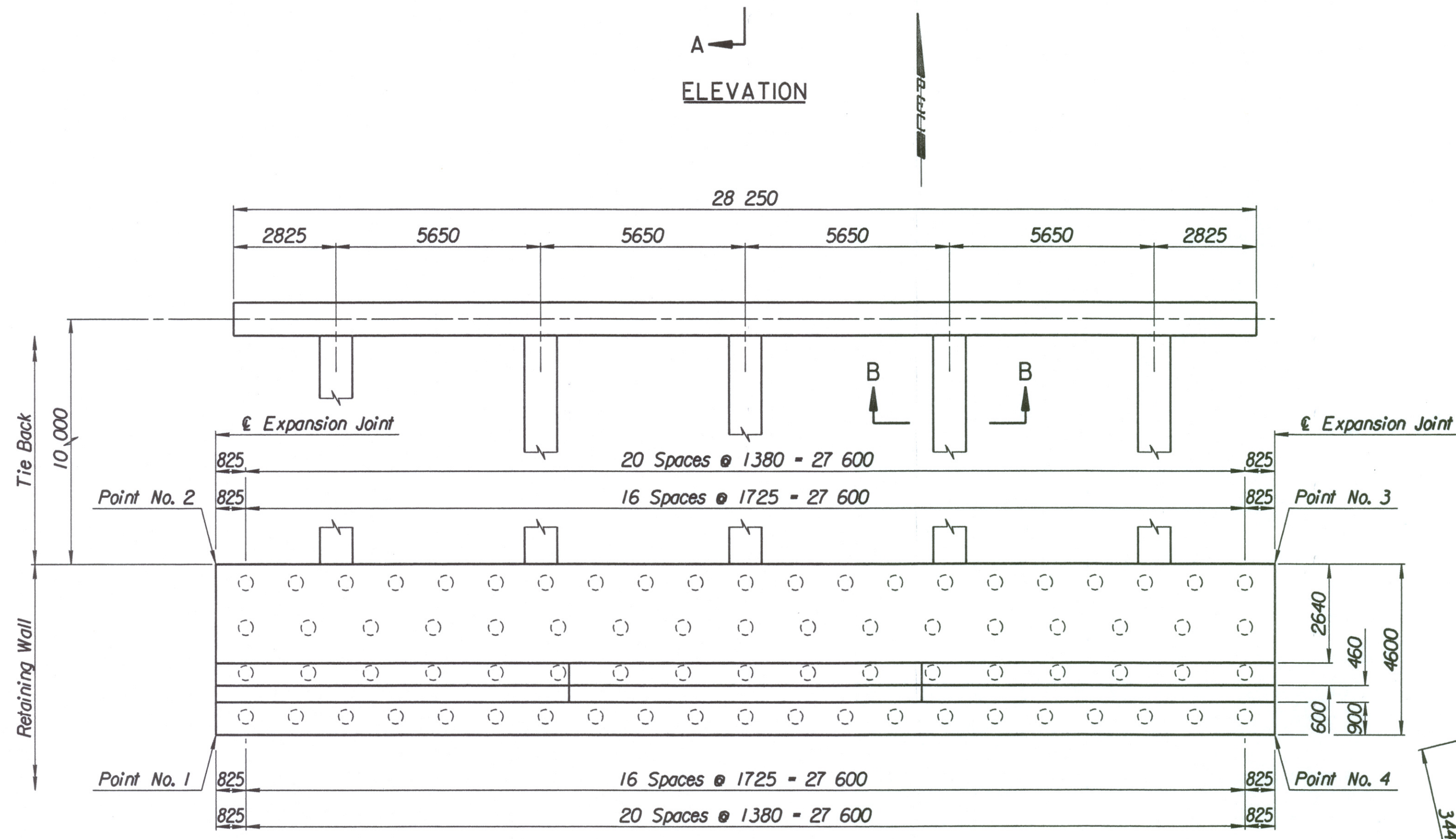
LAYOUT INFORMATION				
Point No.	North Coordinate	East Coordinate	Station	Offset
1	511389.669	491726.712	15+724.066	19.395 Rt.
2	511394.161	491725.718	15+724.066	14.795 Rt.
3	511400.586	491754.224	15+753.171	14.795 Rt.
4	511396.103	491755.253	15+753.171	19.395 Rt.

REINFORCING STEEL							
Straight Bars				Bent Bars			
Mark	Size	Number	Length	Mark	Size	Number	Length
C3-1	*25	342	4520	C3-3	*29	195	3940
C3-2	*25	60	15 540	C3-4	*19	195	2620
				C3-5	*29	195	2500
C3-6	*29	195	5110				
C3-7	*13	99	3870	C3-9	*19	99	1350
C3-8	*16	147	9650				
C3-10	*19	99	4020				
C3-11	*13	99	4120				
C3-12	*29	60	4000				

WALL QUANTITIES		
Item	Quantity	Unit
Pressure Grouted Pile (406 mm)	912.0	m
Concrete (Grade 30(AE))	262.5	m ³
Reinforcing Steel (Grade 420)	27 775	kg
Class III Excavation	180.5	m ³



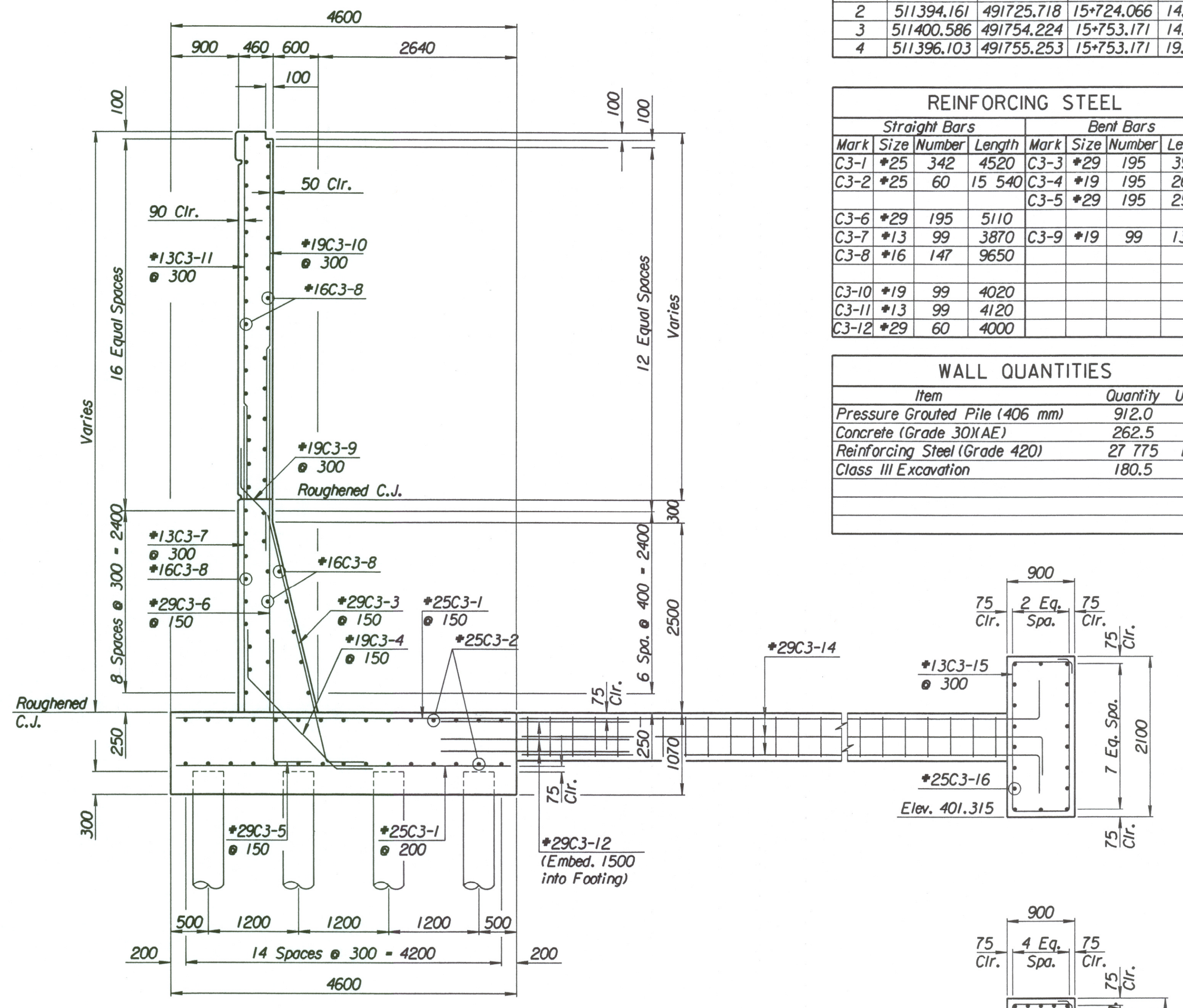
ELEVATION



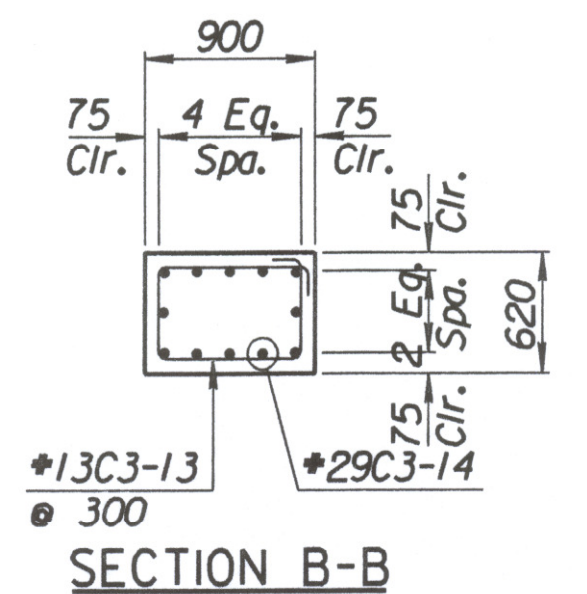
PLAN

TIE BACK REINFORCING STEEL							
Straight Bars				Bent Bars			
Mark	Size	Number	Length	Mark	Size	Number	Length
C3-16	*25	36	15 040	C3-13	*13	160	2740
				C3-14	*29	60	10 500
				C3-15	*13	94	5700

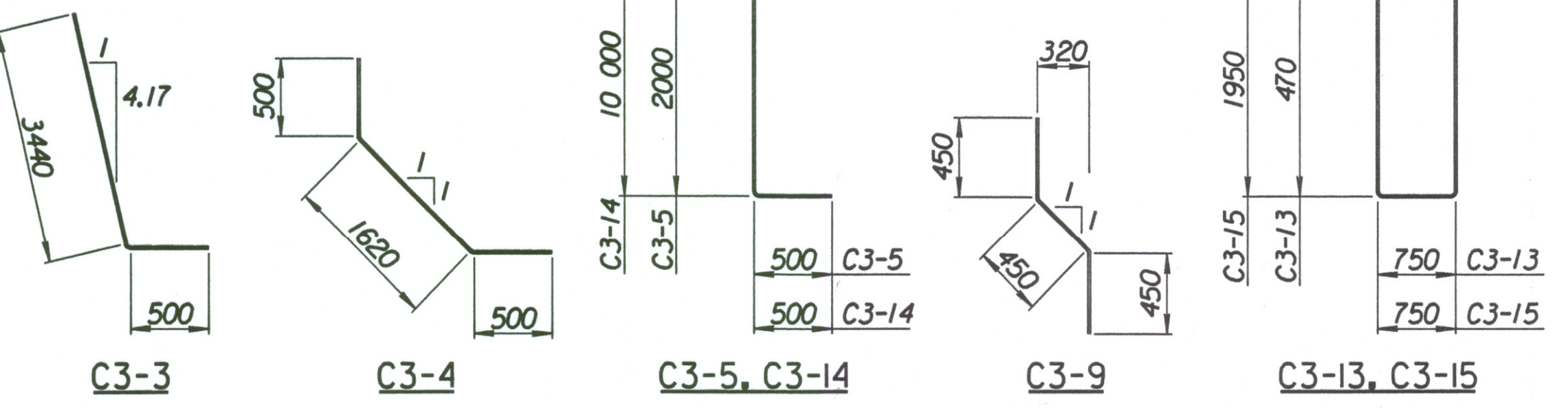
TIE BACK QUANTITIES		
Item	Quantity	Unit
Concrete (Grade 30(AE))	80.0	m ³
Reinforcing Steel (Grade 420)	6307	kg



SECTION A-A



SECTION B-B



BENDING DIAGRAMS
All dimensions are out to out of bars.

No.	Revisions	By	Date

CITY OF WICHITA

MAIZE SOUTHEAST WALL

STA. 15+724.066 TO STA. 15+753.171

SEDGWICK COUNTY

Professional Engineering Consultants, P.A.
303 S. TOPEKA • WICHITA, KANSAS 67202
316-262-2691 • FAX 316-262-3003

Designed by	P.D.F.	Checked by	R.A.S.
Drawn by	W.L.L.	Date	Apr., 2002
		Job No.	97362

Drawn by: wil
 Plotted by: drp
 3-25-2002
 i:\1997\97362\001\bridge\maizerd\SEWall-3