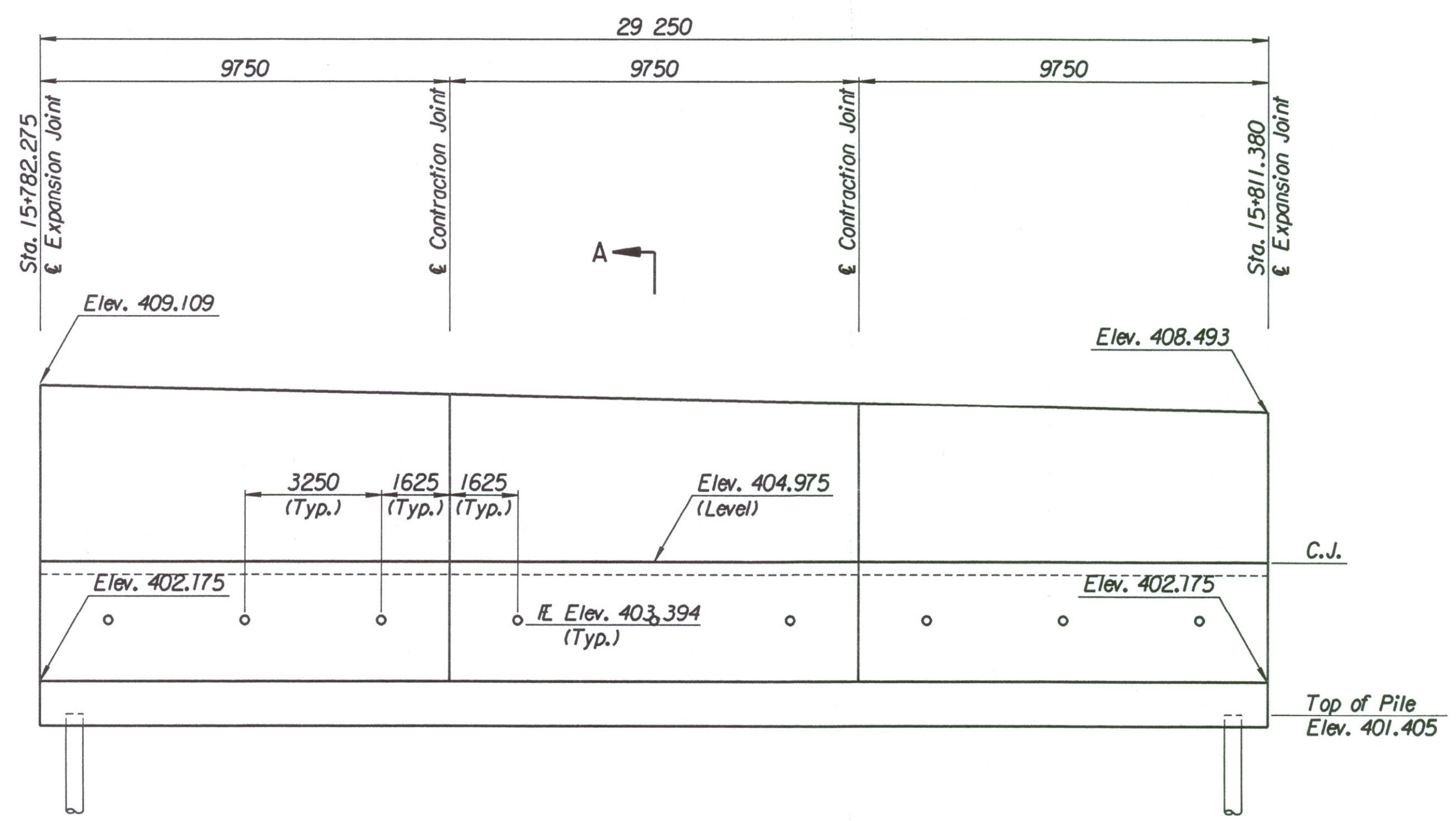


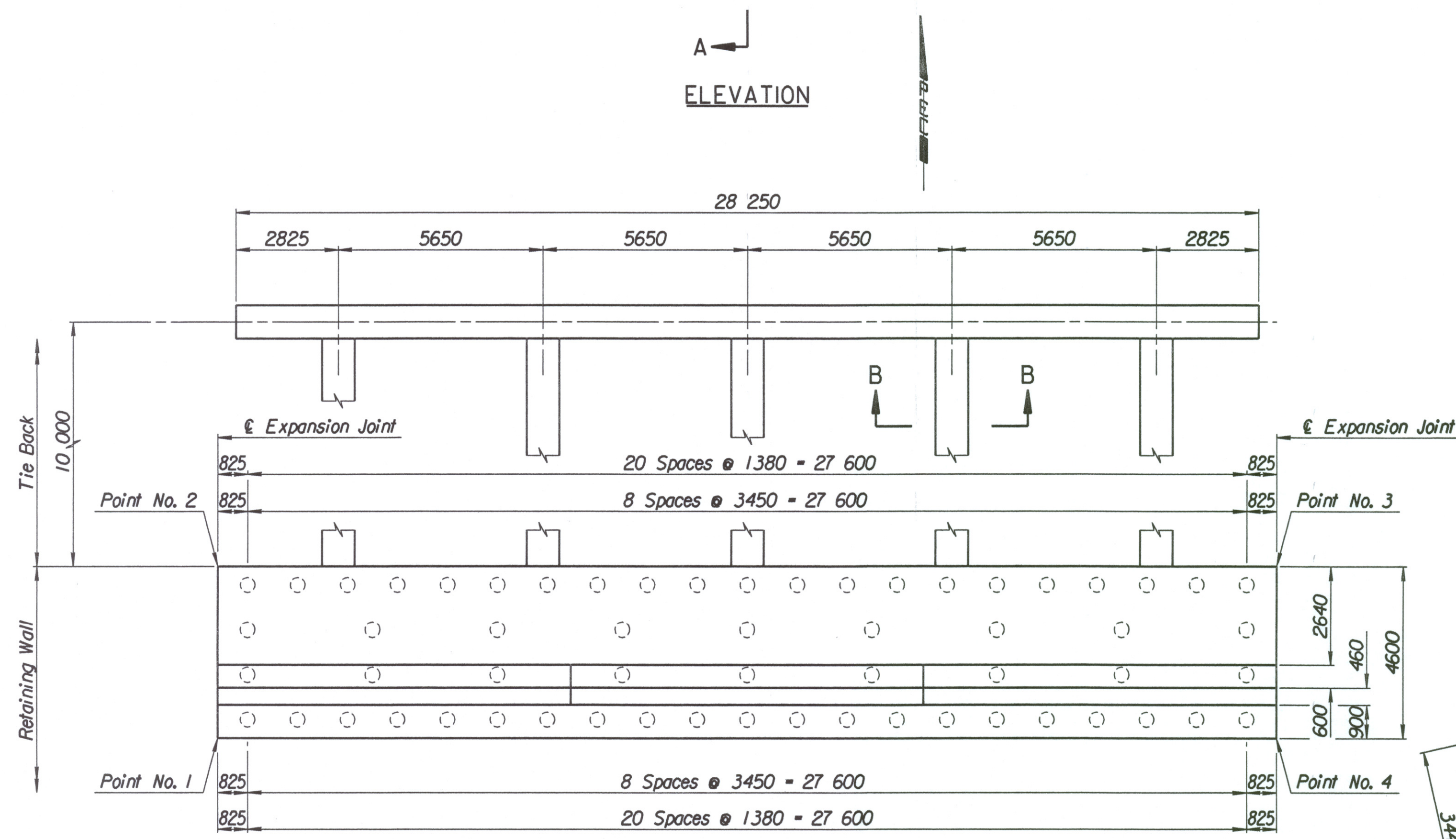
LAYOUT INFORMATION				
Point No.	North Coordinate	East Coordinate	Station	Offset
1	511402.760	491783.742	15+782.275	19.395 Rt.
2	511407.236	491782.678	15+782.275	14.795 Rt.
3	511414.109	491811.079	15+811.380	14.795 Rt.
4	511409.642	491812.179	15+811.380	19.395 Rt.

REINFORCING STEEL							
Straight Bars			Bent Bars				
Mark	Size	Number	Length	Mark	Size	Number	Length
E3-1	*25	342	4520	E3-3	*25	195	3850
E3-2	*25	60	15 540	E3-4	*19	195	2620
				E3-5	*25	195	2110
E3-6	*25	195	4870				
E3-7	*13	99	4030	E3-9	*19	99	1350
E3-8	*16	138	9650				
E3-10	*19	99	3370				
E3-11	*13	99	3470				
E3-12	*29	60	4000				

WALL QUANTITIES		
Item	Quantity	Unit
Pressure Grouted Pile (406 mm)	720.0	m
Concrete (Grade 30XAE)	254.8	m ³
Reinforcing Steel (Grade 420)	24 442	kg
Class III Excavation	209.6	m ³



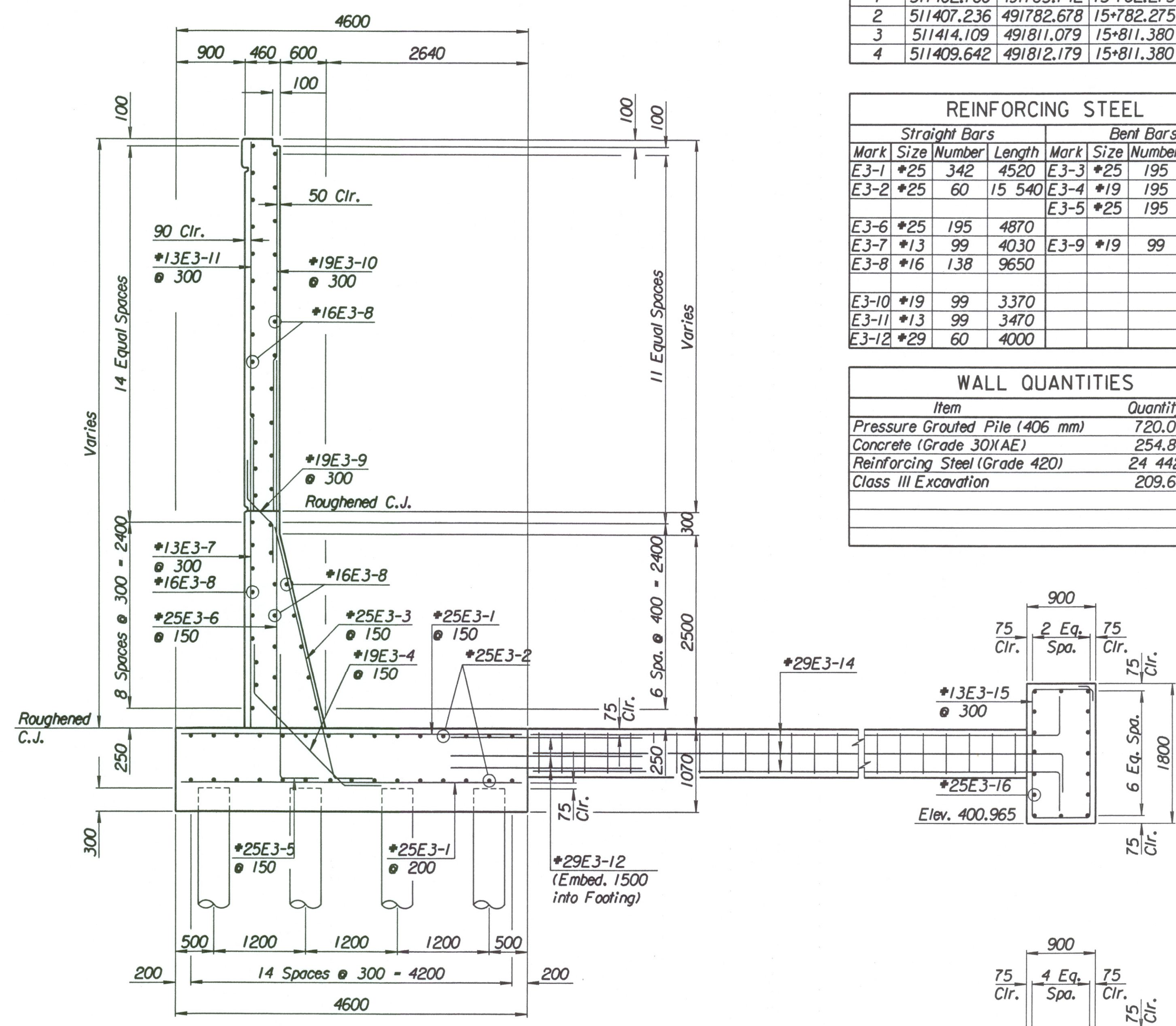
ELEVATION



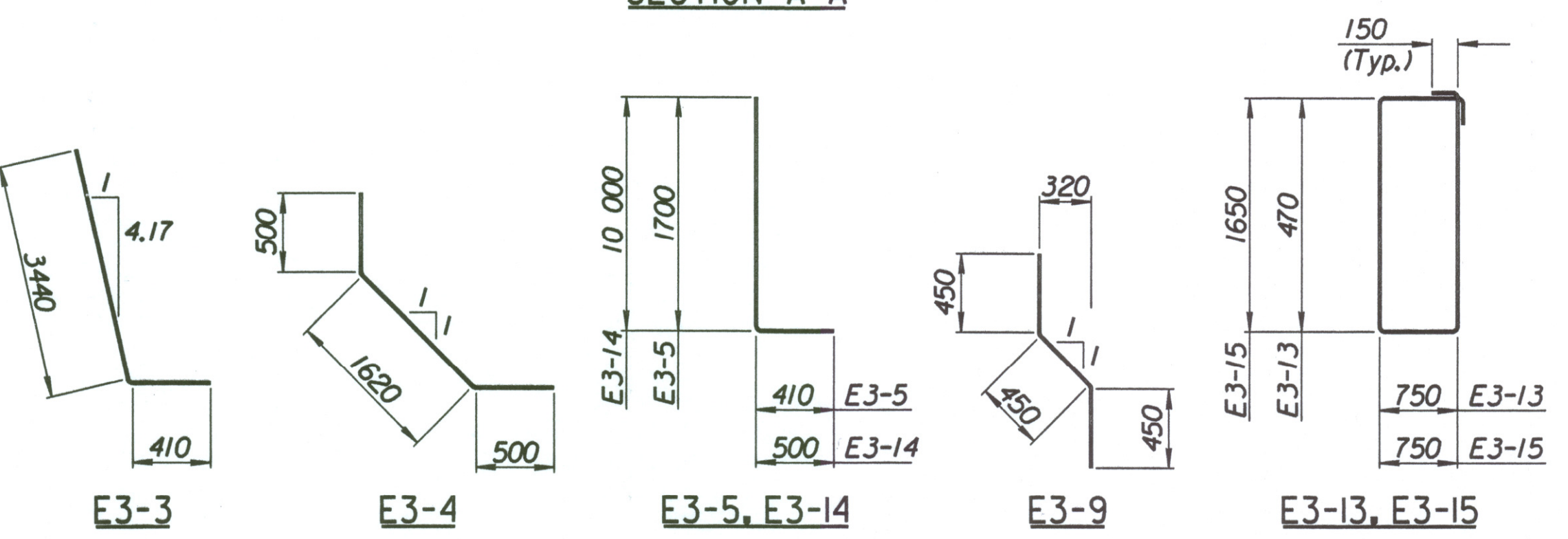
PLAN

TIE BACK REINFORCING STEEL							
Straight Bars				Bent Bars			
Mark	Size	Number	Length	Mark	Size	Number	Length
E3-16	*25	32	15 040	E3-13	*13	160	2740
				E3-14	*29	60	10 500
				E3-15	*13	94	5100

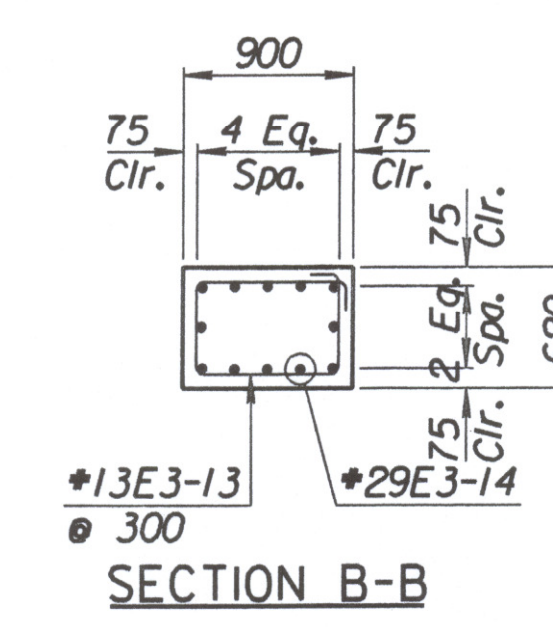
TIE BACK QUANTITIES		
Item	Quantity	Unit
Concrete (Grade 30XAE)	72.4	m ³
Reinforcing Steel (Grade 420)	6012	kg



SECTION A-A



BENDING DIAGRAMS
All dimensions are out to out of bars.



SECTION B-B

No.	Revisions	By	Date

CITY OF WICHITA
MAIZE SOUTHEAST WALL
STA. 15+782.275 TO STA. 15+811.380
SEDGWICK COUNTY

Professional Engineering Consultants, P.A.
303 S. TOPEKA • WICHITA, KANSAS 67202
316-262-2691 • FAX 316-262-3003
Designed by P.D.F. Checked by R.A.S.
Drawn by W.L.L. Date Apr. 2002 Job No. 97362

Drawn by: will
 Plotted by: drp 3-25-2002
 I:\1997\97362\001\bridge\maizerd\SEWall-5