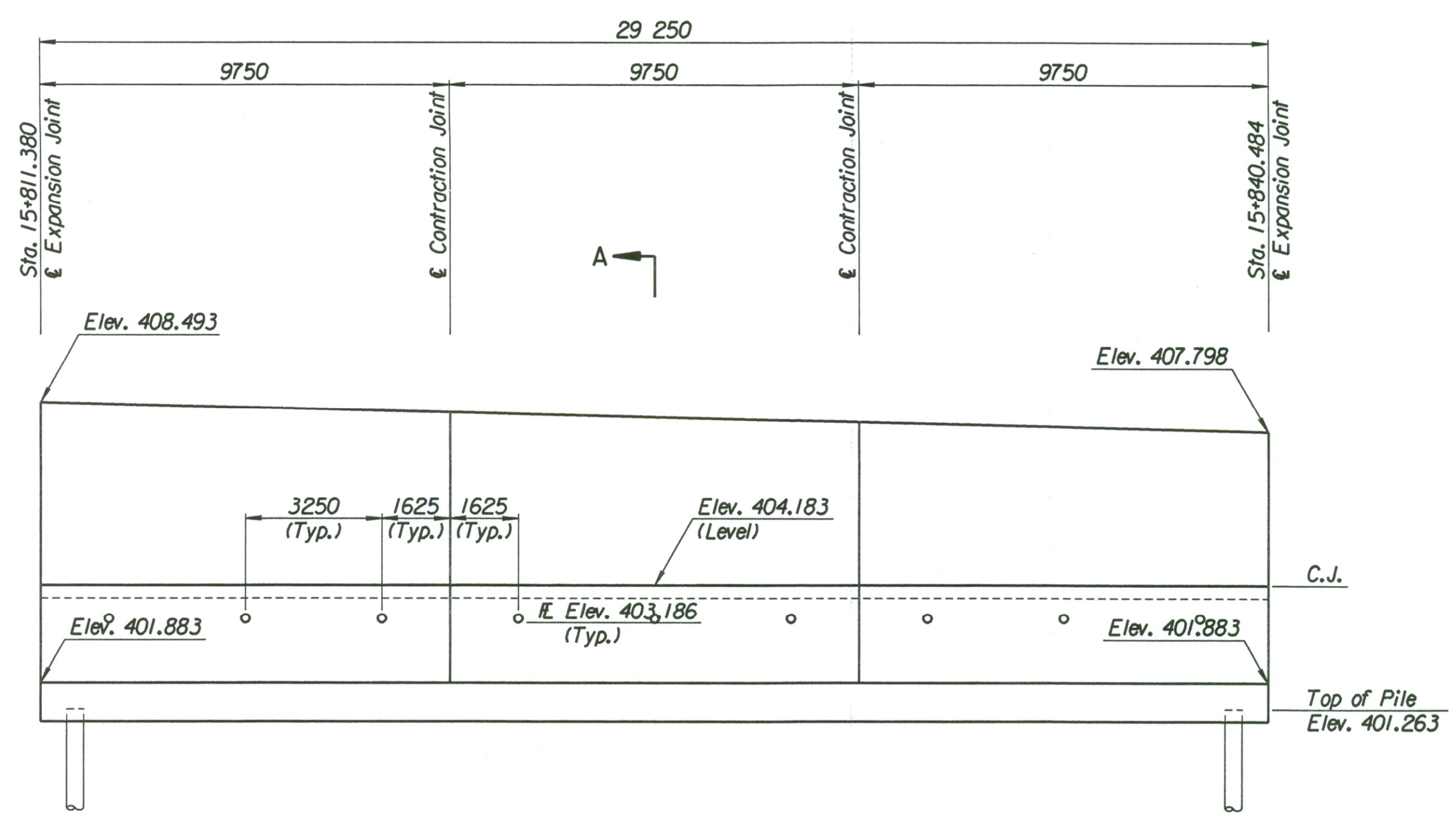


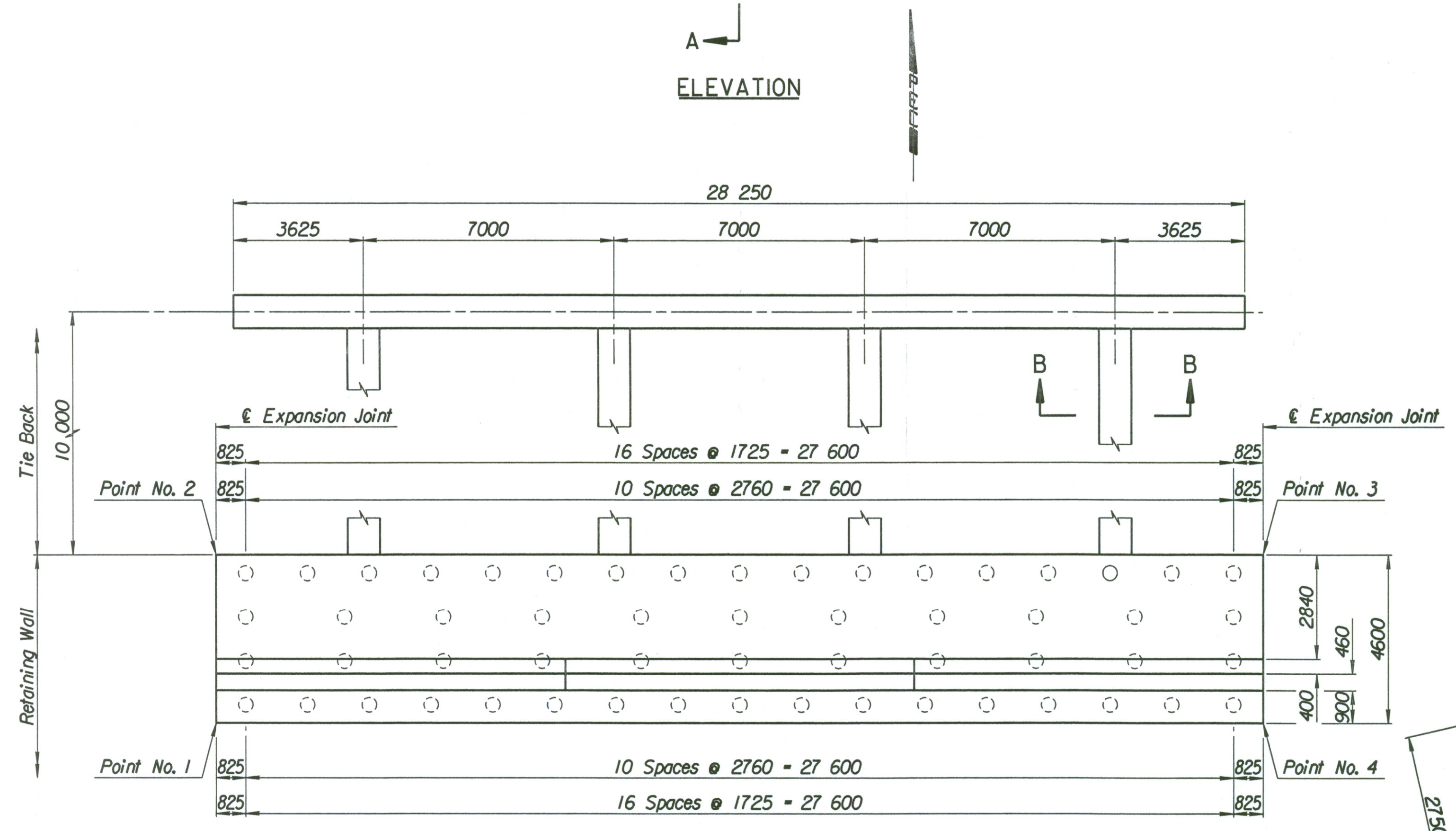
LAYOUT INFORMATION				
Point No.	North Coordinate	East Coordinate	Station	Offset
1	511409.642	491812.179	15+811.380	19.395 Rt.
2	511414.109	491811.079	15+811.380	14.795 Rt.
3	511421.205	491839.425	15+840.484	14.795 Rt.
4	511416.747	491840.559	15+840.484	19.395 Rt.

REINFORCING STEEL							
Straight Bars			Bent Bars				
Mark	Size	Number	Length	Mark	Size	Number	Length
F3-1	*25	246	4520	F3-3	*29	195	3250
F3-2	*25	60	15 540	F3-4	*19	195	2320
				F3-5	*25	195	1910
F3-6	*25	195	4450				
F3-7	*13	99	3610	F3-9	*19	99	1350
F3-8	*16	132	9650				
F3-10	*19	99	3460				
F3-11	*13	99	3570				
F3-12	*29	48	4000				

WALL QUANTITIES		
Item	Quantity	Unit
Pressure Grouted Pile (406 mm)	672.0	m
Concrete (Grade 30/AE)	219.5	m ³
Reinforcing Steel (Grade 420)	21 987	kg
Class III Excavation	180.9	m ³



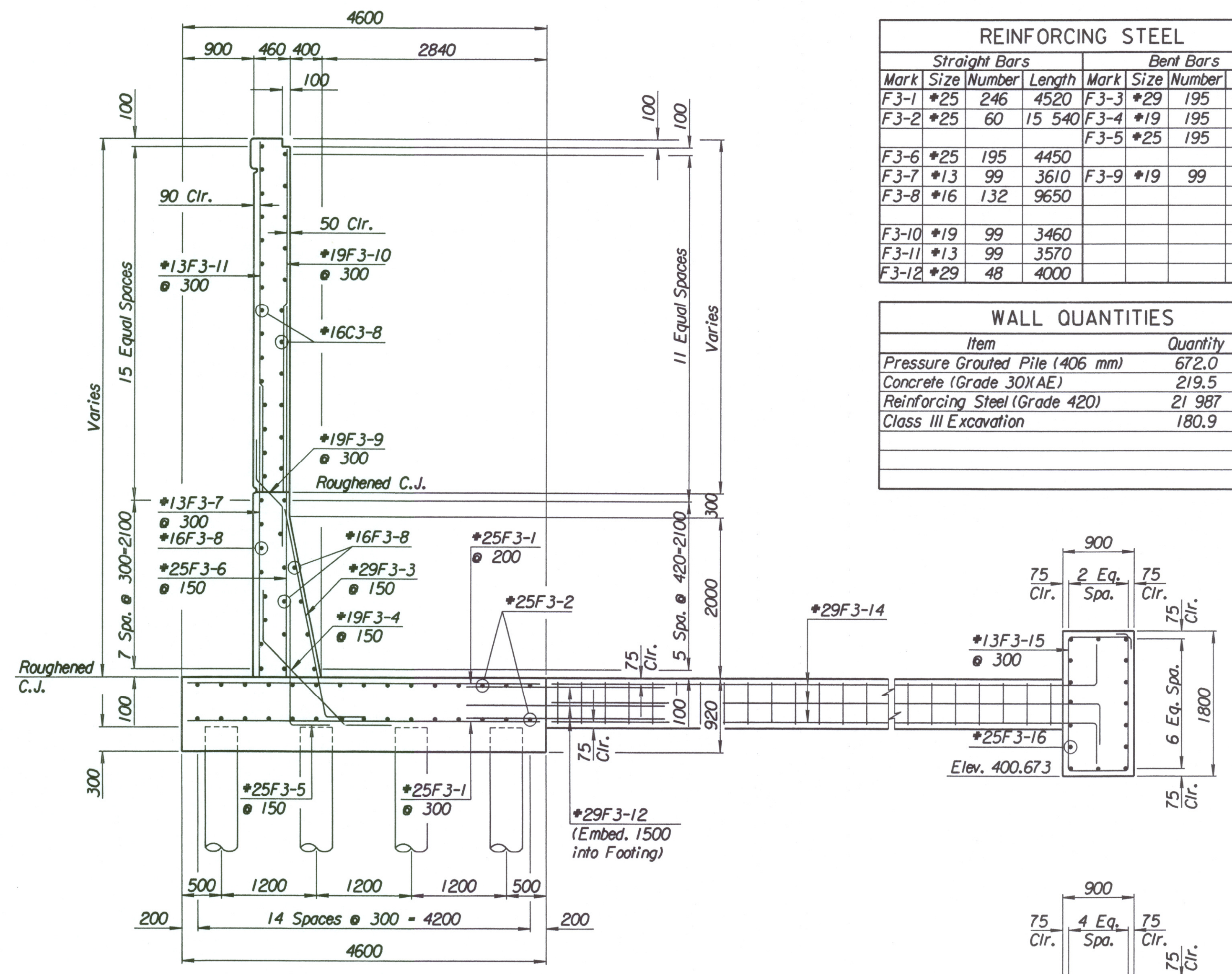
ELEVATION



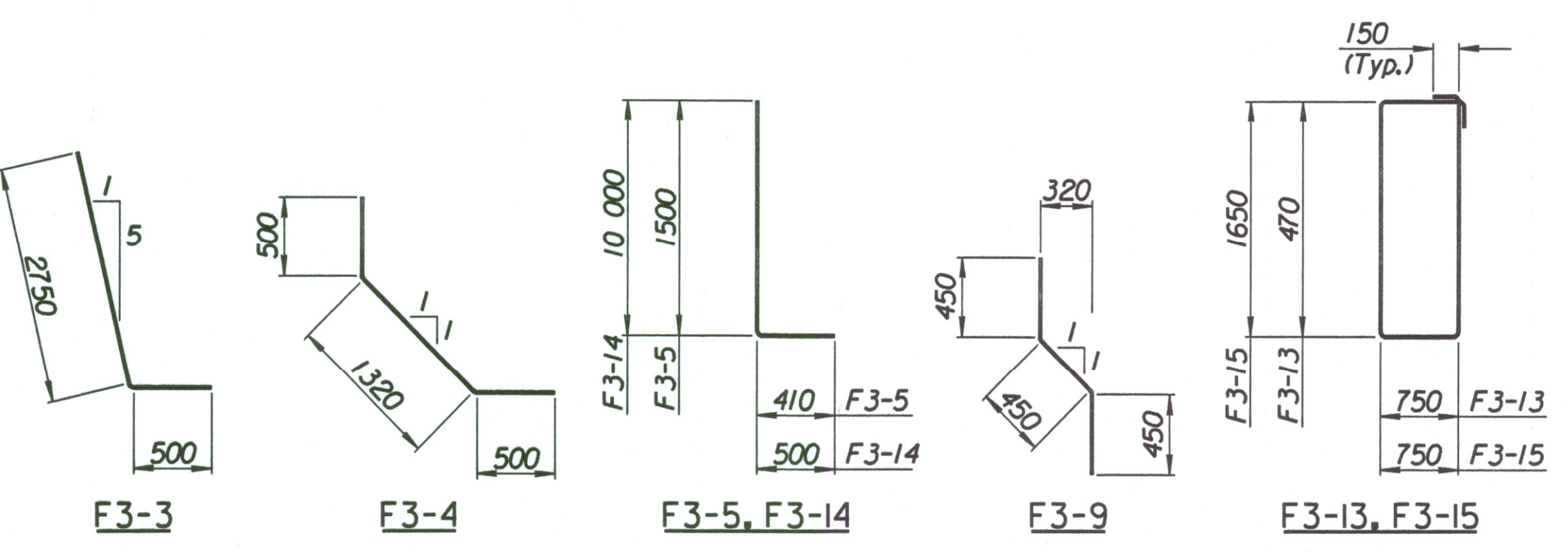
PLAN

TIE BACK REINFORCING STEEL							
Straight Bars				Bent Bars			
Mark	Size	Number	Length	Mark	Size	Number	Length
F3-16	*25	32	15 040	F3-13	*13	128	2740
				F3-14	*29	48	10 500
				F3-15	*13	94	5100

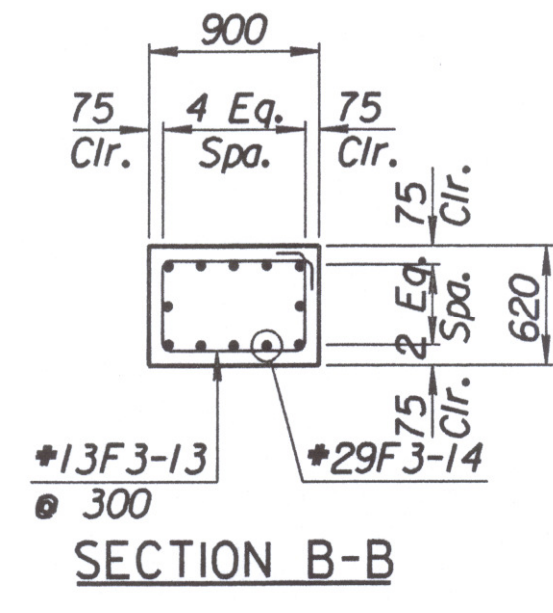
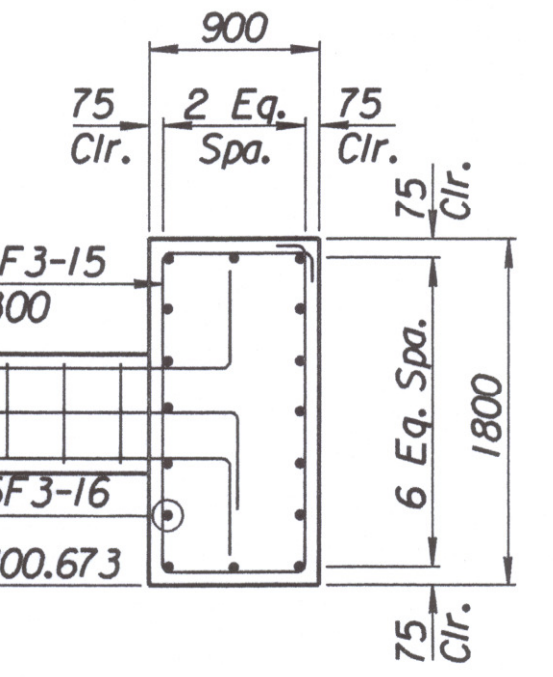
TIE BACK QUANTITIES		
Item	Quantity	Unit
Concrete (Grade 30/AE)	67.1	m ³
Reinforcing Steel (Grade 420)	5288	kg



SECTION A-A



BENDING DIAGRAMS
All dimensions are out to out of bars.



No.	Revisions	By	Date

CITY OF WICHITA

MAIZE SOUTHEAST WALL
STA. 15+811.380 TO STA. 15+840.484
SEDGWICK COUNTY

Professional Engineering Consultants, P.A.
303 S. TOPEKA • WICHITA, KANSAS 67202
316-262-2691 • FAX 316-262-3003

Designed by	P.D.F.	Checked by	R.A.S.
Drawn by	W.L.L.	Date	Apr. 2002
		Job No.	97362

Drawn by: will
 Plotted by: drp 3-25-2002
 1:/1997/97362/001/bridge/maizerd/SEWall-6