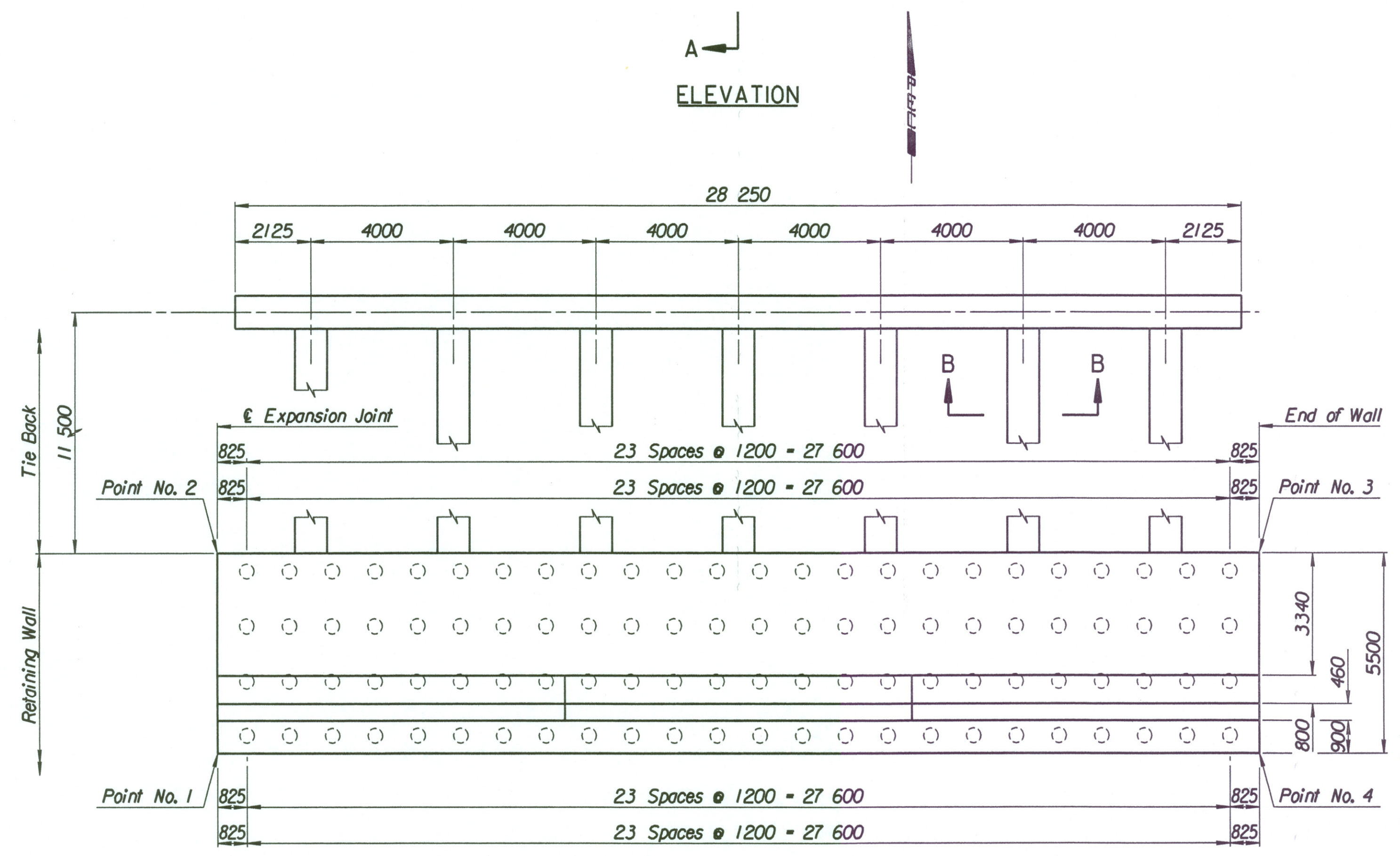
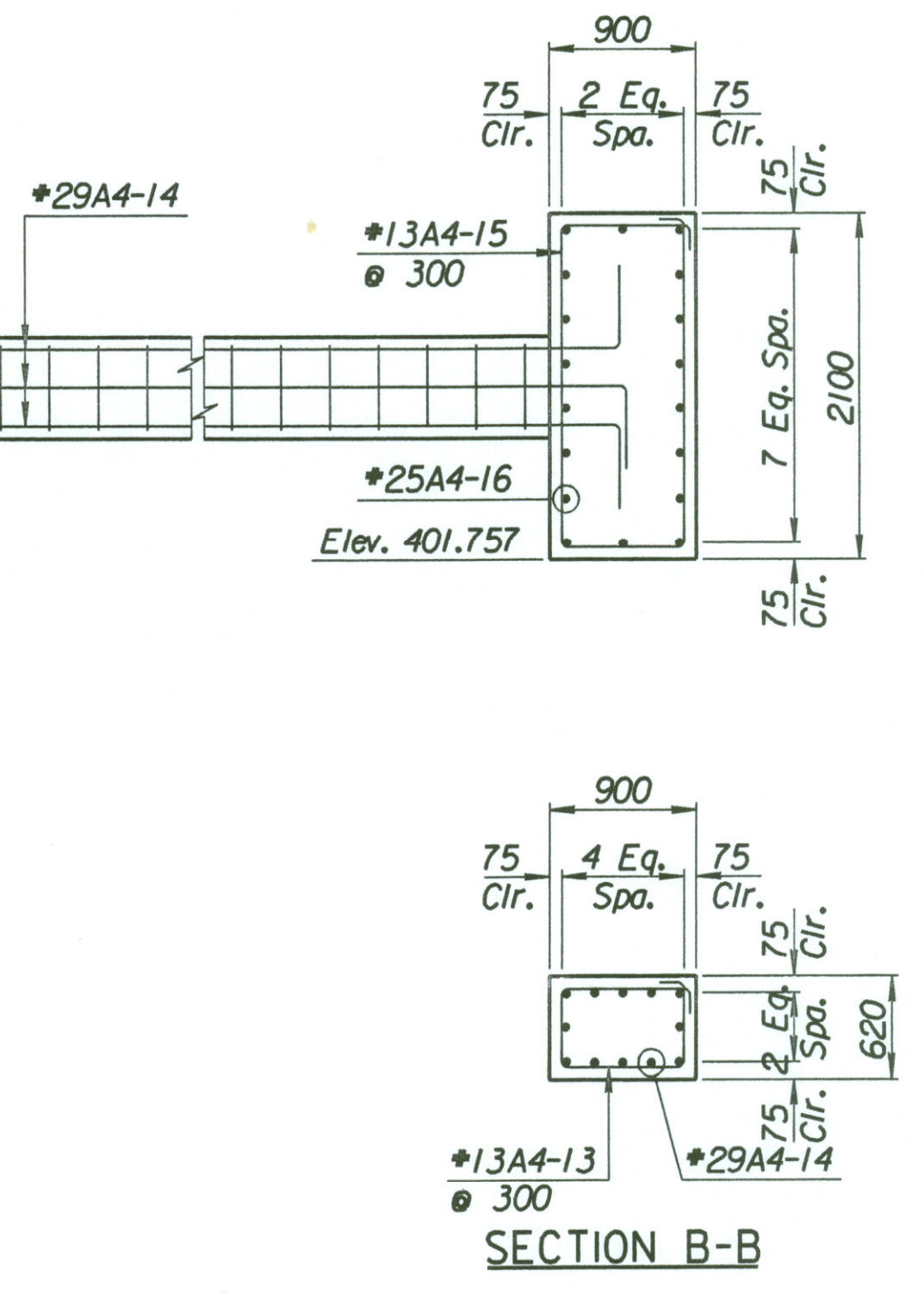
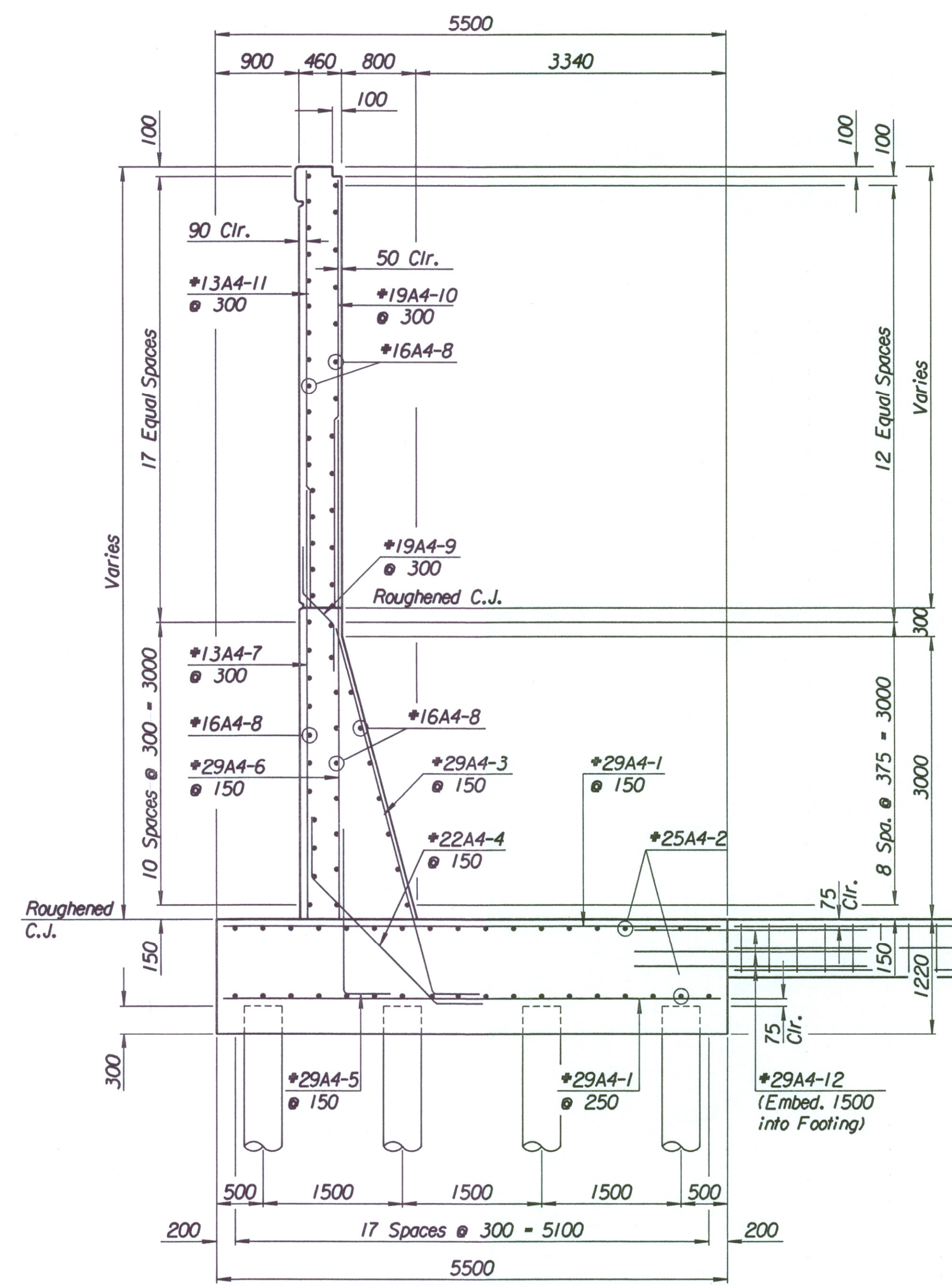
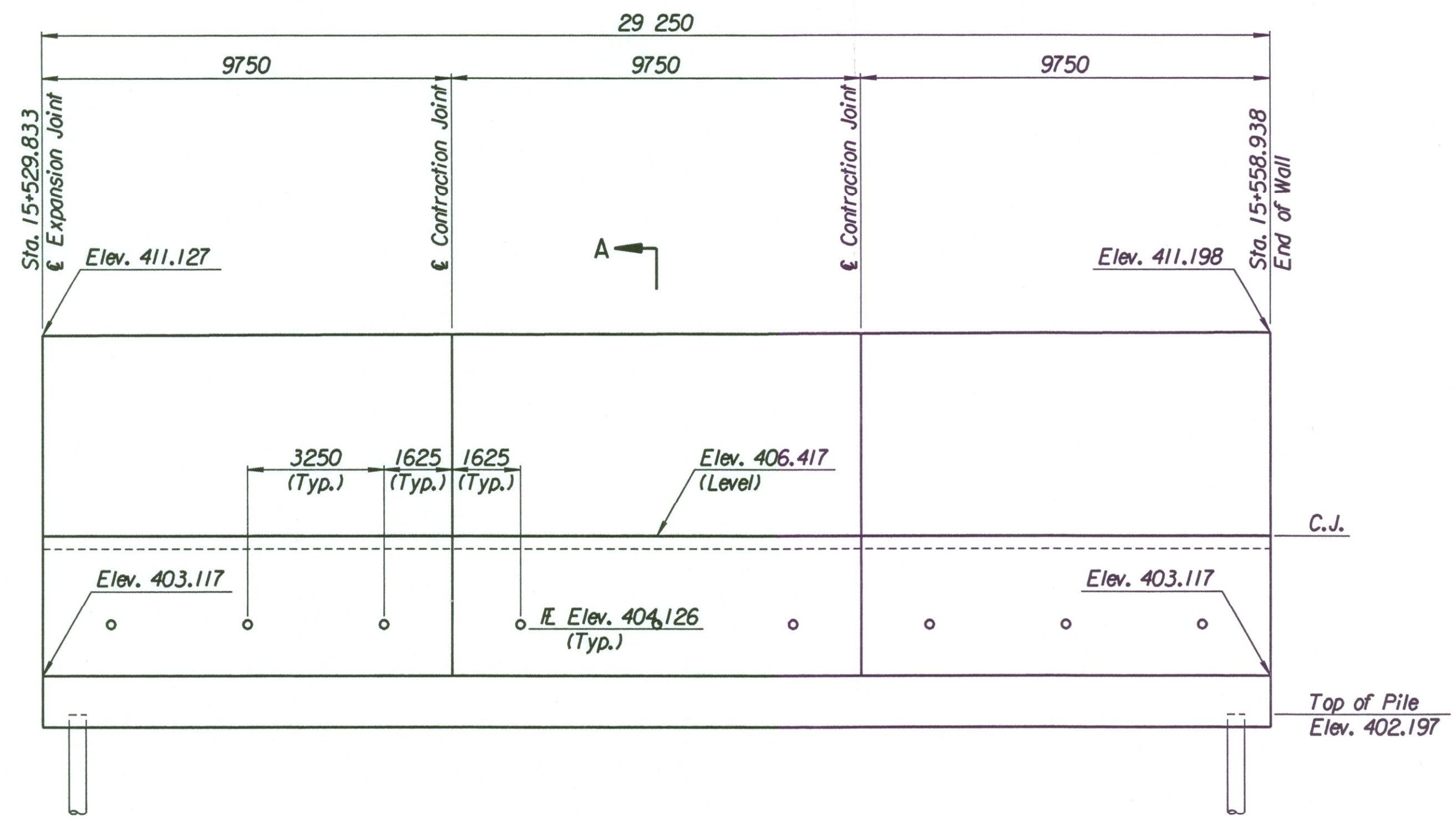


LAYOUT INFORMATION				
Point No.	North Coordinate	East Coordinate	Station	Offset
1	511352.507	491535.053	15+529.833	19.395 Rt.
2	511357.932	491534.148	15+529.833	13.895 Rt.
3	511362.851	491562.945	15+558.938	13.895 Rt.
4	511357.434	491563.892	15+558.938	19.395 Rt.

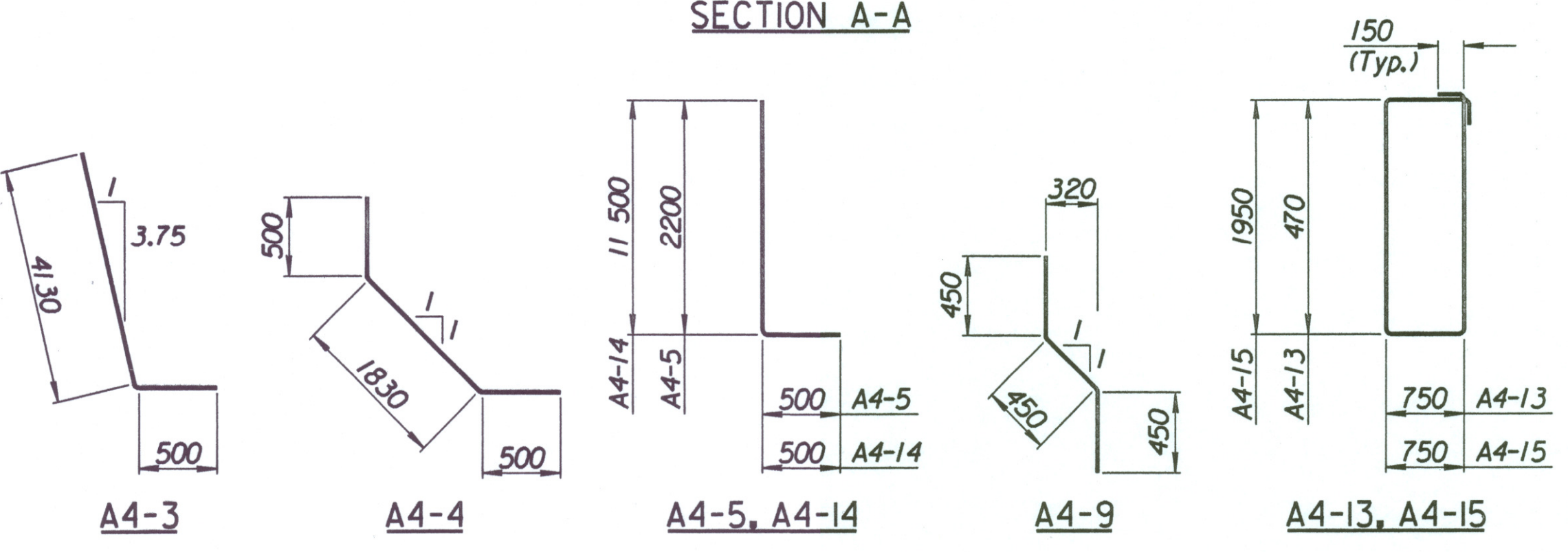
REINFORCING STEEL							
Straight Bars			Bent Bars				
Mark	Size	Number	Length	Mark	Size	Number	Length
A4-1	*29	312	5420	A4-3	*29	195	4630
A4-2	*25	72	15 540	A4-4	*22	195	2830
A4-6	*29	195	5220	A4-5	*29	195	2700
A4-7	*13	99	3980	A4-9	*19	99	1350
A4-8	*16	168	9650				
A4-10	*19	99	4560				
A4-11	*13	99	4660				
A4-12	*29	84	4000				

WALL QUANTITIES		
Item	Quantity	Unit
Pressure Grouted Pile (406 mm)	1152.0	m
Concrete (Grade 30XAE)	339.3	m <sup>3</sup>
Reinforcing Steel (Grade 420)	33 438	kg
Class III Excavation	334.4	m <sup>3</sup>



TIE BACK REINFORCING STEEL							
Straight Bars				Bent Bars			
Mark	Size	Number	Length	Mark	Size	Number	Length
A4-16	*25	36	15 040	A4-13	*13	259	2740
				A4-14	*29	84	12 000
				A4-15	*13	94	5700

TIE BACK QUANTITIES		
Item	Quantity	Unit
Concrete (Grade 30XAE)	96.6	m <sup>3</sup>
Reinforcing Steel (Grade 420)	8490	kg



BENDING DIAGRAMS  
All dimensions are out to out of bars.

No.	Revisions	By	Date

CITY OF WICHITA

### MAIZE SOUTHWEST WALL

STA. 15+529.833 TO STA. 15+558.938  
SEDGWICK COUNTY

**Professional Engineering Consultants, P.A.**  
303 S. TOPKA • WICHITA, KANSAS 67202  
316-262-2691 • FAX 316-262-3003

Designed by P.D.F.      Checked by R.A.S.  
Drawn by W.L.L.      Date Apr. 2002      Job No. 97362

Drawn by: will  
 Plotted by: drp 3-25-2002  
 I:/1997/97362/001/bridge/maizerd/SWwall-12