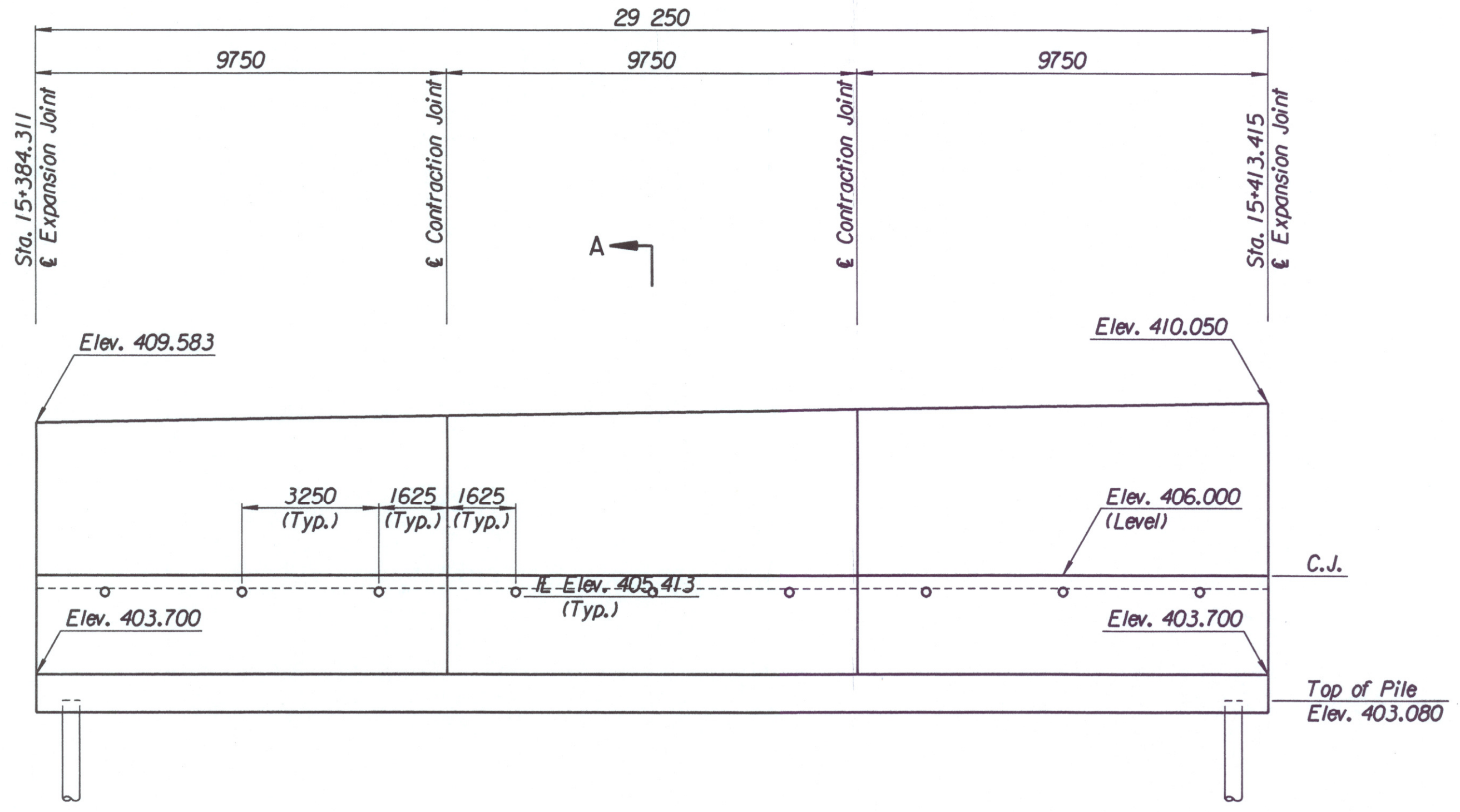


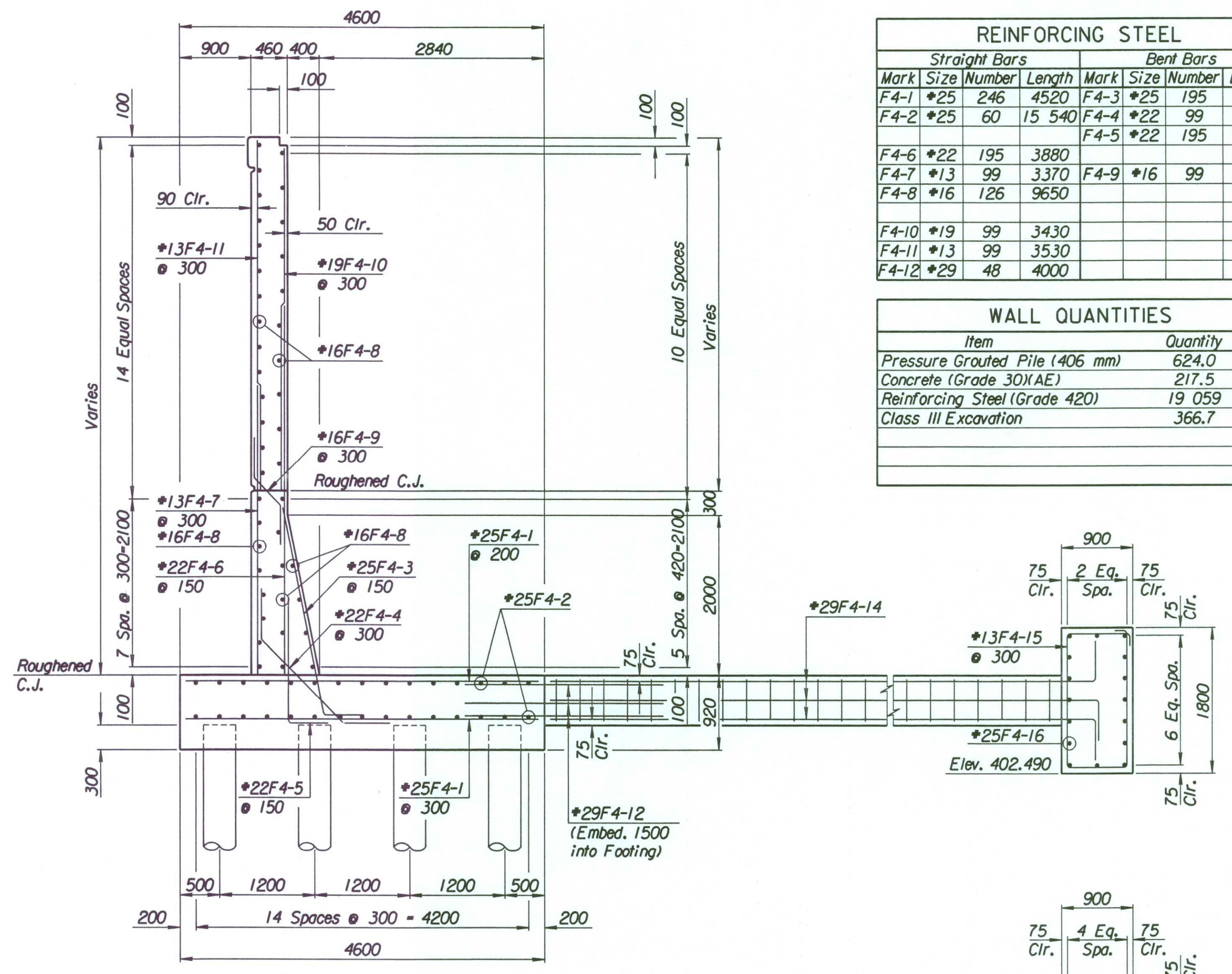
LAYOUT INFORMATION				
Point No.	North Coordinate	East Coordinate	Station	Offset
1	511331.283	491390.325	15+384.311	19.395 Rt.
2	511335.846	491389.747	15+384.311	14.795 Rt.
3	511339.631	491418.722	15+413.415	14.795 Rt.
4	511335.072	491419.335	15+413.415	19.395 Rt.

REINFORCING STEEL							
Straight Bars			Bent Bars				
Mark	Size	Number	Length	Mark	Size	Number	Length
F4-1	*25	246	4520	F4-3	*25	195	3160
F4-2	*25	60	15 540	F4-4	*22	99	2320
				F4-5	*22	195	1660
F4-6	*22	195	3880				
F4-7	*13	99	3370	F4-9	*16	99	1350
F4-8	*16	126	9650				
F4-10	*19	99	3430				
F4-11	*13	99	3530				
F4-12	*29	48	4000				

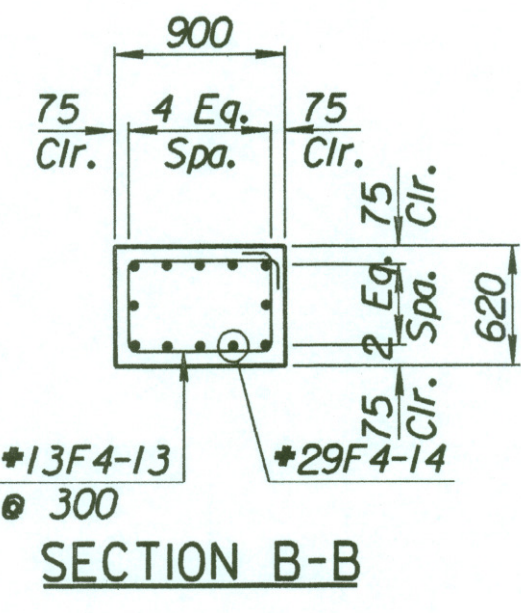
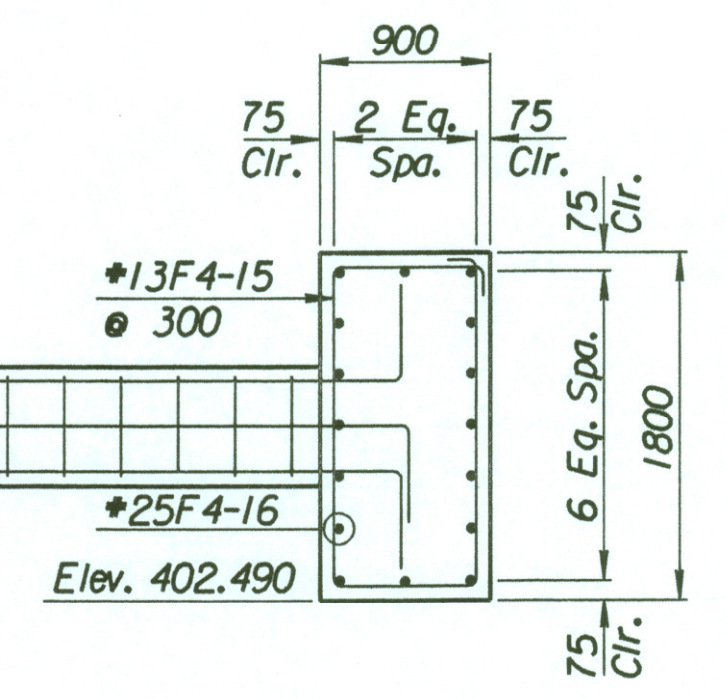
WALL QUANTITIES		
Item	Quantity	Unit
Pressure Grouted Pile (406 mm)	624.0	m
Concrete (Grade 30)(AE)	217.5	m <sup>3</sup>
Reinforcing Steel (Grade 420)	19 059	kg
Class III Excavation	366.7	m <sup>3</sup>



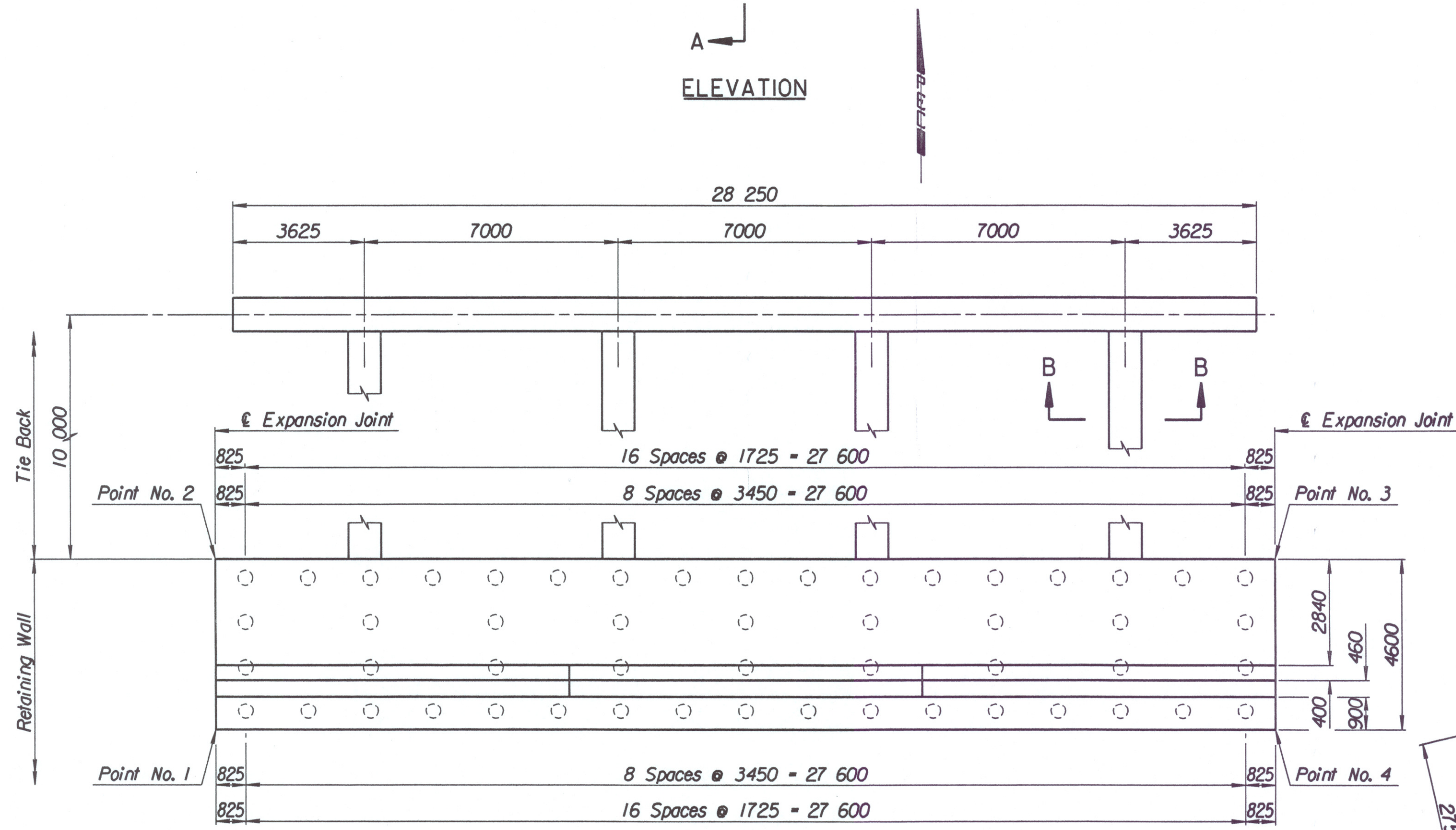
ELEVATION



SECTION A-A



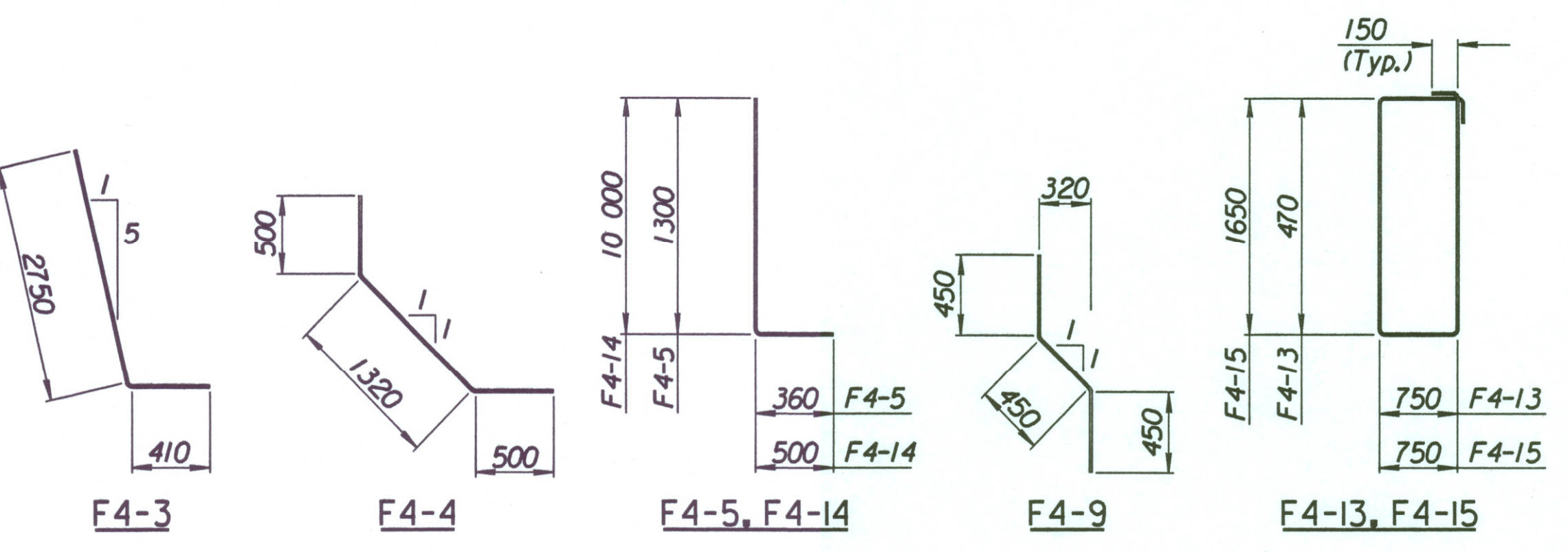
SECTION B-B



PLAN

TIE BACK REINFORCING STEEL							
Straight Bars			Bent Bars				
Mark	Size	Number	Length	Mark	Size	Number	Length
F4-16	*25	32	15 040	F4-13	*13	128	2740
				F4-14	*29	48	10 500
				F4-15	*13	94	5100

TIE BACK QUANTITIES		
Item	Quantity	Unit
Concrete (Grade 30)(AE)	67.1	m <sup>3</sup>
Reinforcing Steel (Grade 420)	5288	kg



BENDING DIAGRAMS  
All dimensions are out to out of bars.

No.	Revisions	By	Date

CITY OF WICHITA

### MAIZE SOUTHWEST WALL

STA. 15+384.311 TO STA. 15+413.415

SEDGWICK COUNTY

**Professional Engineering Consultants, P.A.**  
303 S. TOPEKA • WICHITA, KANSAS 67202  
316-262-2621 • FAX 316-262-3003

Designed by P.D.F.      Checked by R.A.S.  
Drawn by W.L.L.      Date Apr., 2002      Job No. 97362

Drawn by: wll  
Plotted by: drp 3-25-2002  
i:\1997\97362\001\bridge\maizerd\SWWall-7