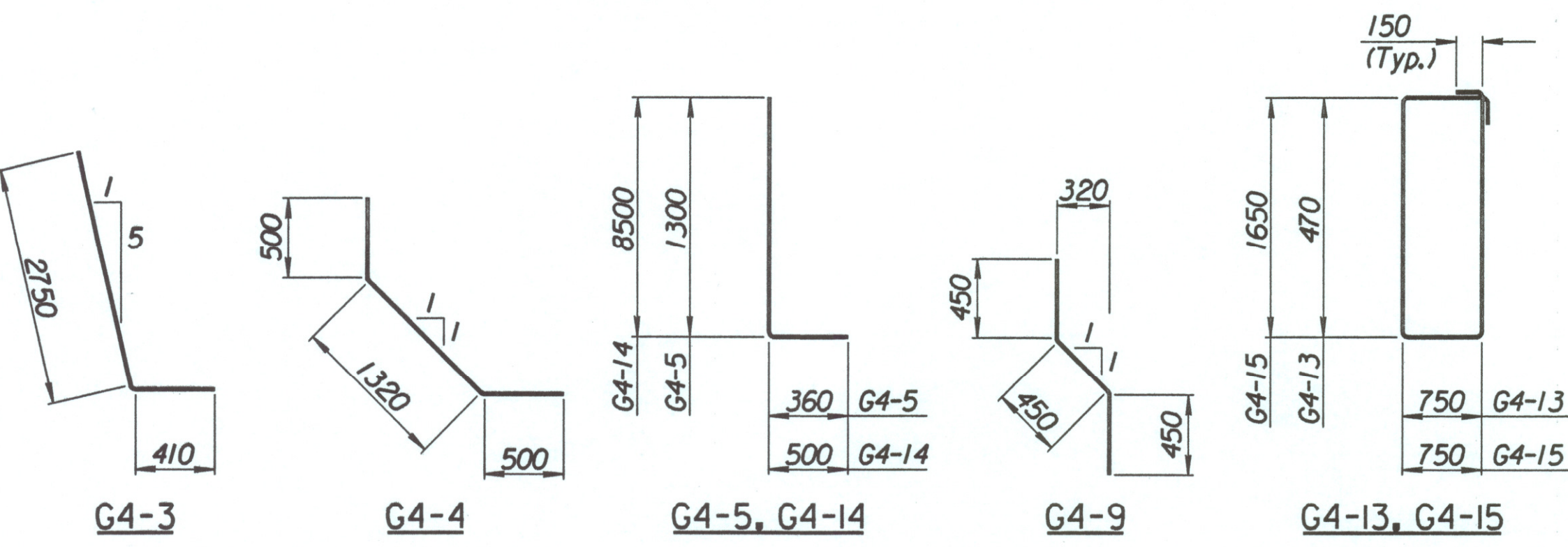
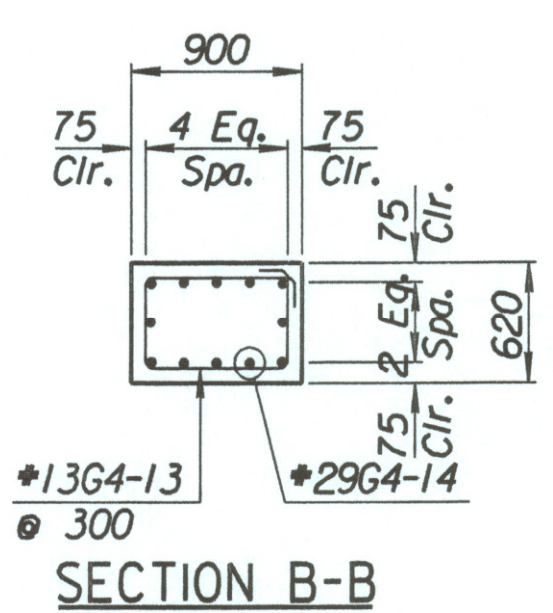
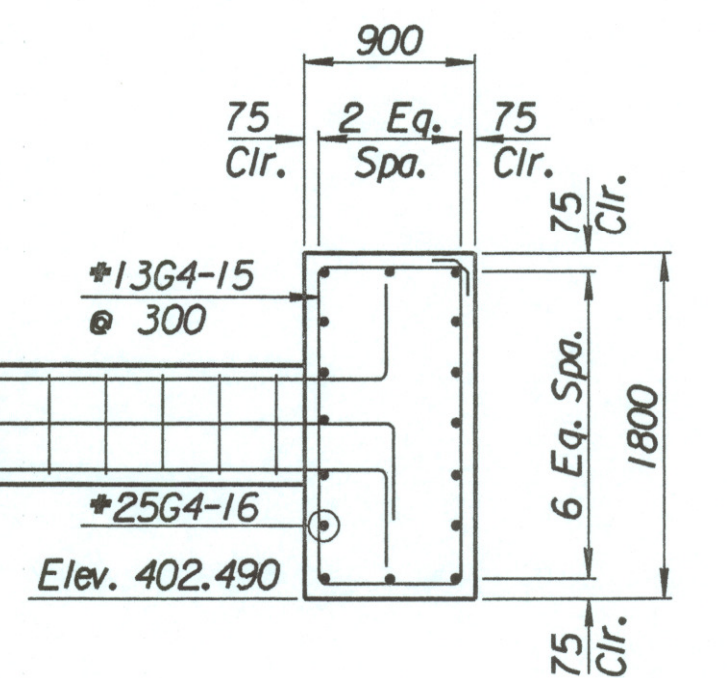
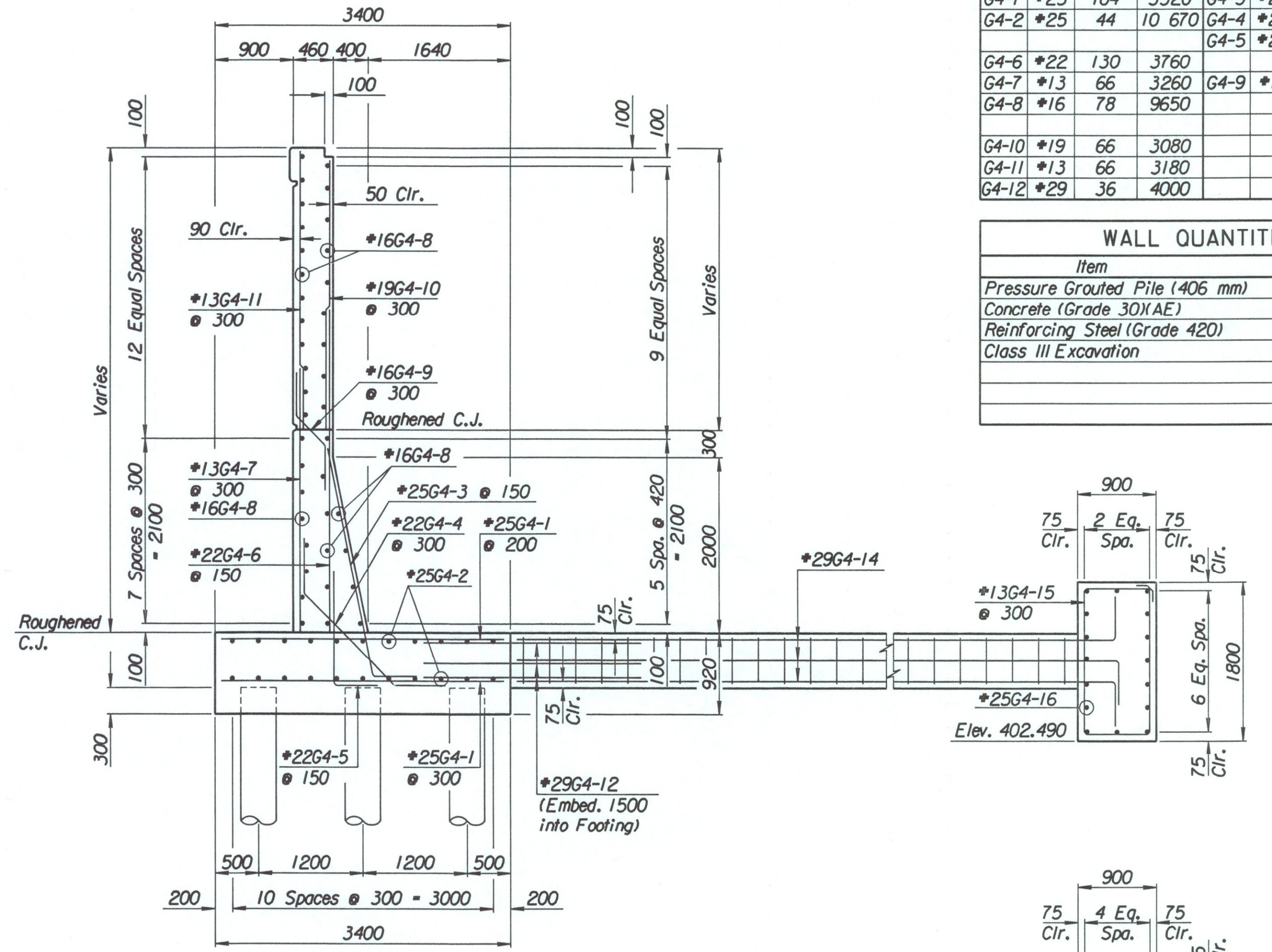
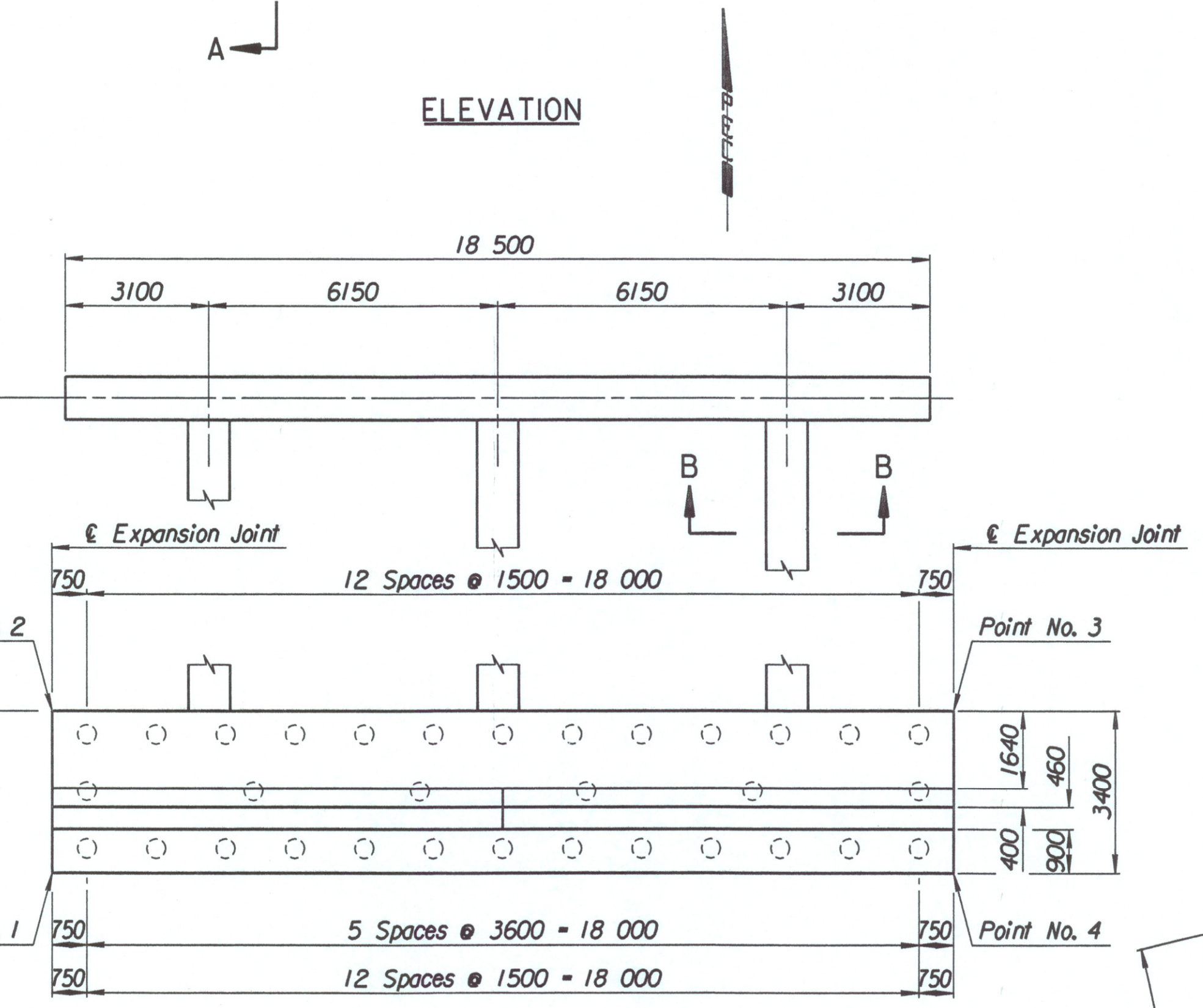
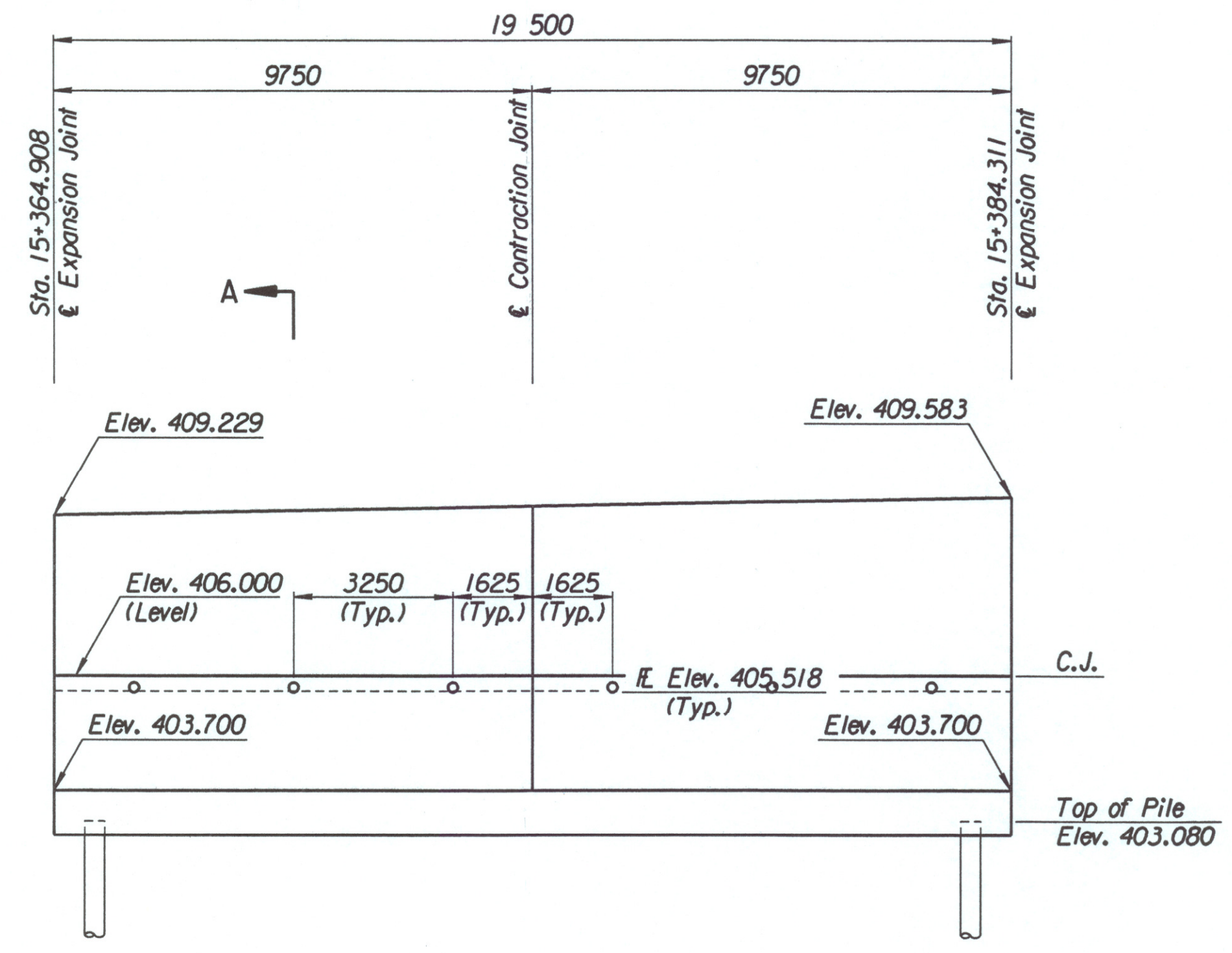


STATE	PROJECT NO.	YEAR	SHEET NO.	TOTAL SHEETS
KANSAS	54-87 K-6657-01	2002	309	1122

LAYOUT INFORMATION				
Point No.	North Coordinate	East Coordinate	Station	Offset
1	511328.883	491370.969	15+364.908	19.395 Rt.
2	511332.259	491370.559	15+364.908	15.995 Rt.
3	511334.656	491389.898	15+384.311	15.995 Rt.
4	511331.283	491390.325	15+384.311	19.395 Rt.

REINFORCING STEEL							
Straight Bars			Bent Bars				
Mark	Size	Number	Length	Mark	Size	Number	Length
G4-1	*25	164	3320	G4-3	*25	130	3160
G4-2	*25	44	10 670	G4-4	*22	66	2320
				G4-5	*22	130	1660
G4-6	*22	130	3760				
G4-7	*13	66	3260	G4-9	*16	66	1350
G4-8	*16	78	9650				
G4-10	*19	66	3080				
G4-11	*13	66	3180				
G4-12	*29	36	4000				

WALL QUANTITIES		
Item	Quantity	Unit
Pressure Grouted Pile (406 mm)	384.0	m
Concrete (Grade 30)(AE)	119.8	m ³
Reinforcing Steel (Grade 420)	11 182	kg
Class III Excavation	157.2	m ³



TIE BACK REINFORCING STEEL							
Straight Bars			Bent Bars				
Mark	Size	Number	Length	Mark	Size	Number	Length
G4-16	*25	32	10 170	G4-13	*13	81	2740
				G4-14	*29	36	9000
				G4-15	*13	63	5100

TIE BACK QUANTITIES		
Item	Quantity	Unit
Concrete (Grade 30)(AE)	43.4	m ³
Reinforcing Steel (Grade 420)	3472	kg

No.	Revisions	By	Date
CITY OF WICHITA			
MAIZE SOUTHWEST WALL			
STA. 15+364.908 TO STA. 15+384.311			
SEDGWICK COUNTY			
 Professional Engineering Consultants, P.A. 303 S. TOPEKA • WICHITA, KANSAS 67202 316-262-2601 • FAX 316-262-3003			
Designed by	P.D.F.	Checked by	R.A.S.
Drawn by	W.L.L.	Date	Apr. 2002
		Job No.	97362

Drawn by: wil
 Plotted by: drp 3-25-2002
 i:\1997\97362\001\bridge\maizerd\SWwall-6