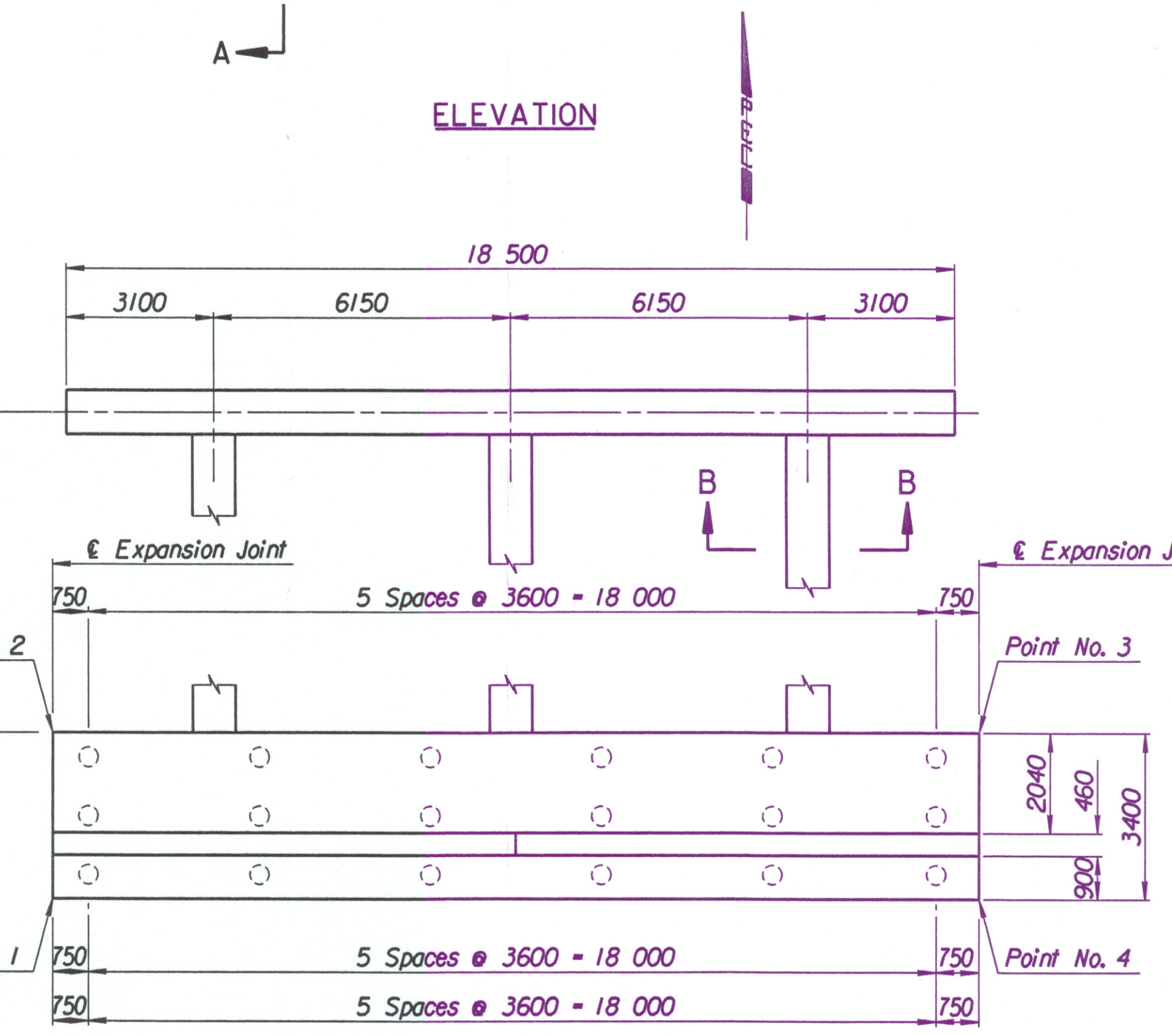
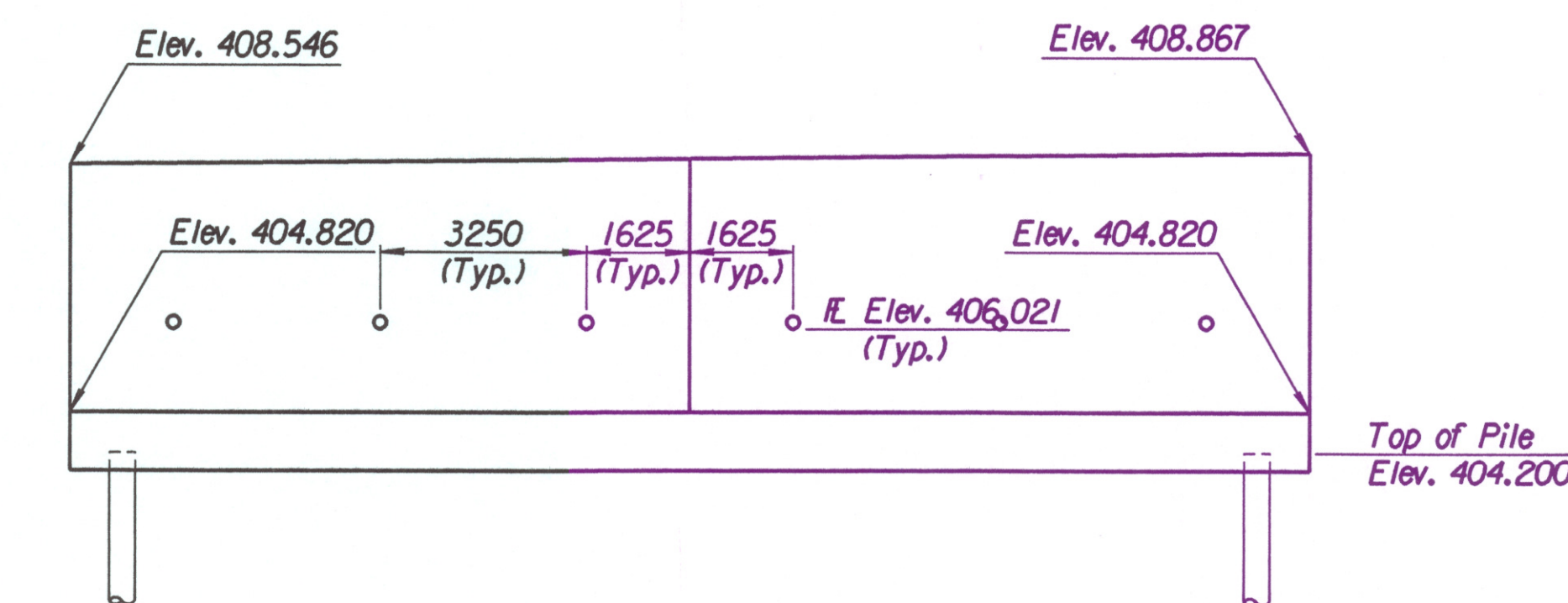
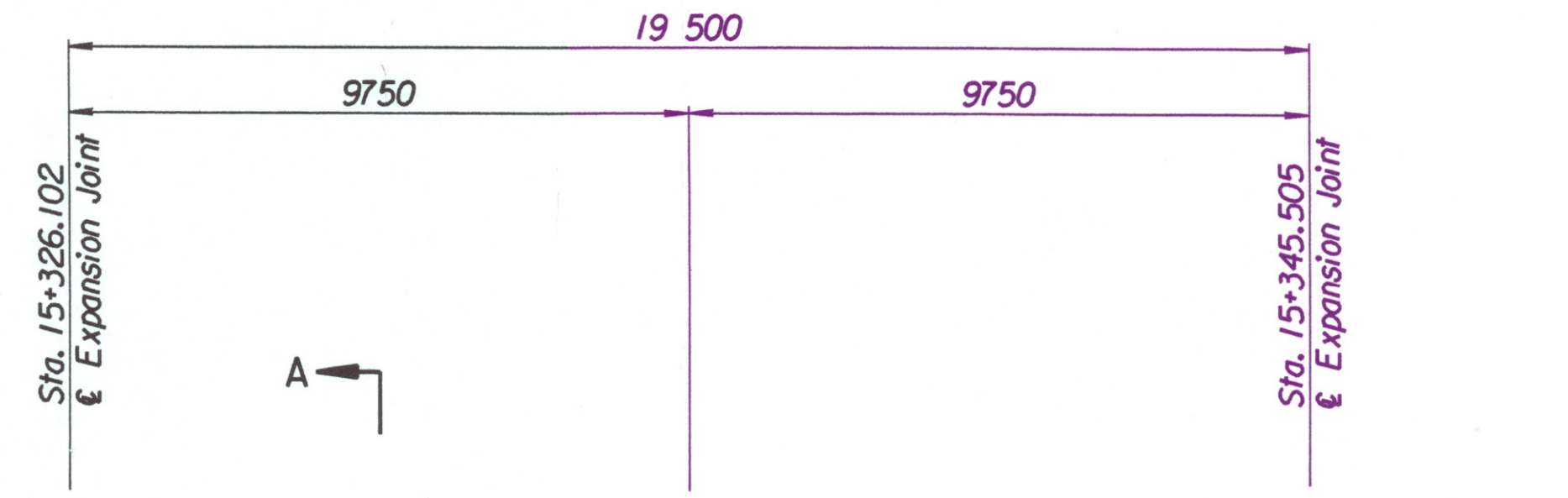


STATE	PROJECT NO.	YEAR	SHEET NO.	TOTAL SHEETS
KANSAS	54-87 K-6657-01	2002	311	1122

LAYOUT INFORMATION				
Point No.	North Coordinate	East Coordinate	Station	Offset
1	511324.390	491332.219	15+326.102	19.395 Rt.
2	511327.769	491331.845	15+326.102	15.995 Rt.
3	511329.963	491351.208	15+345.505	15.995 Rt.
4	511326.586	491351.600	15+345.505	19.395 Rt.

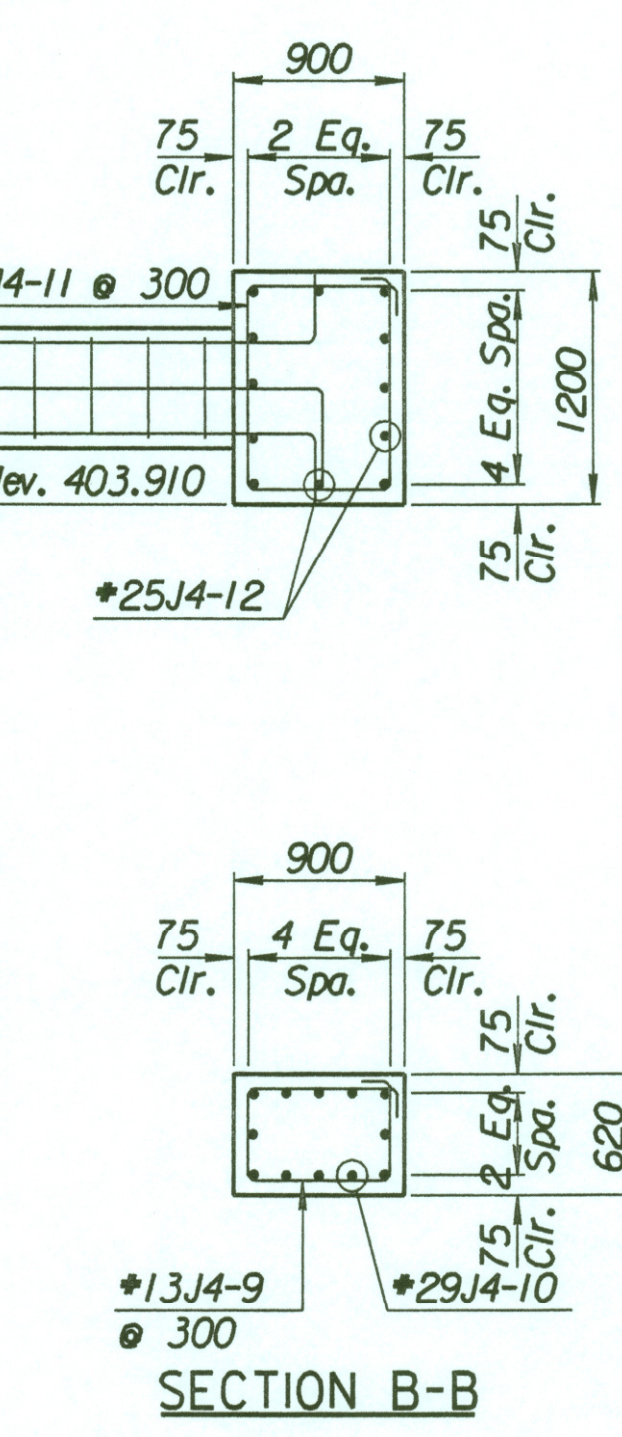
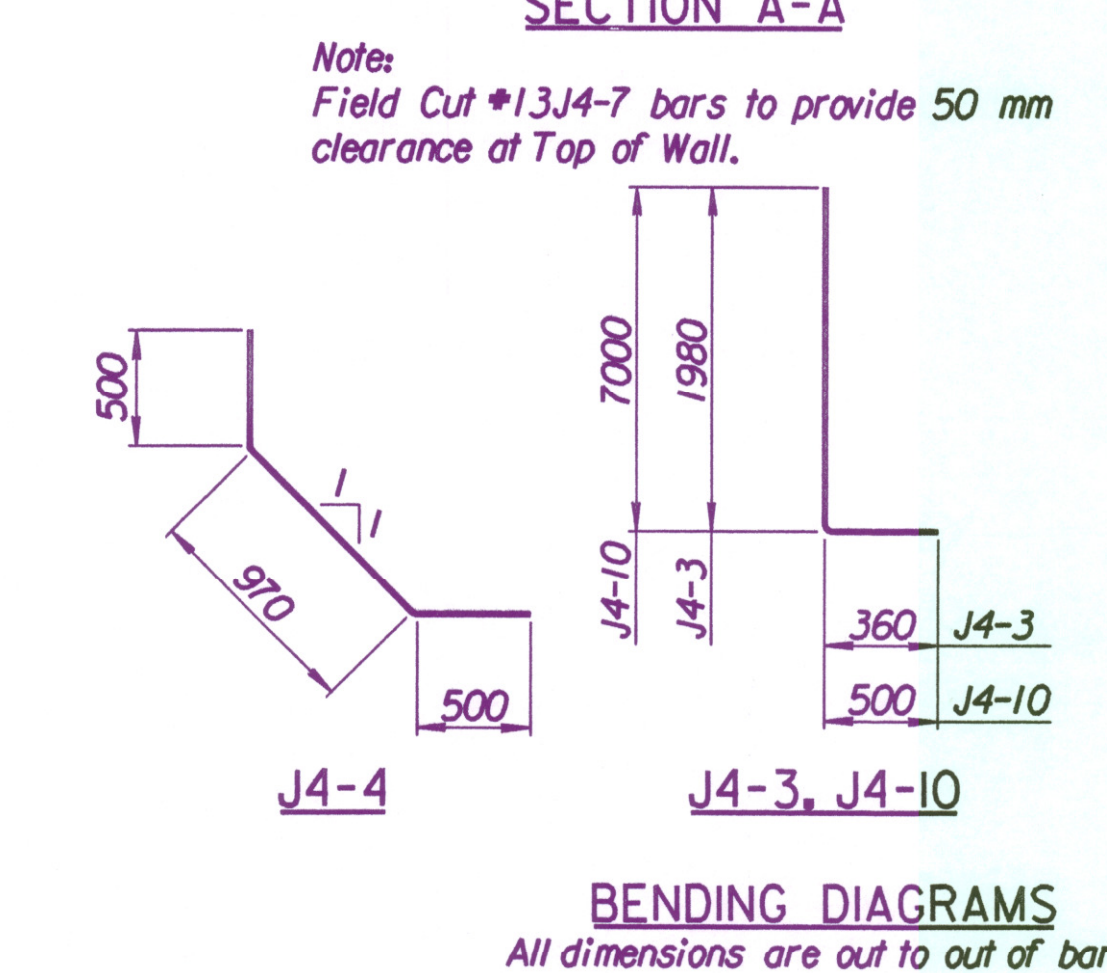
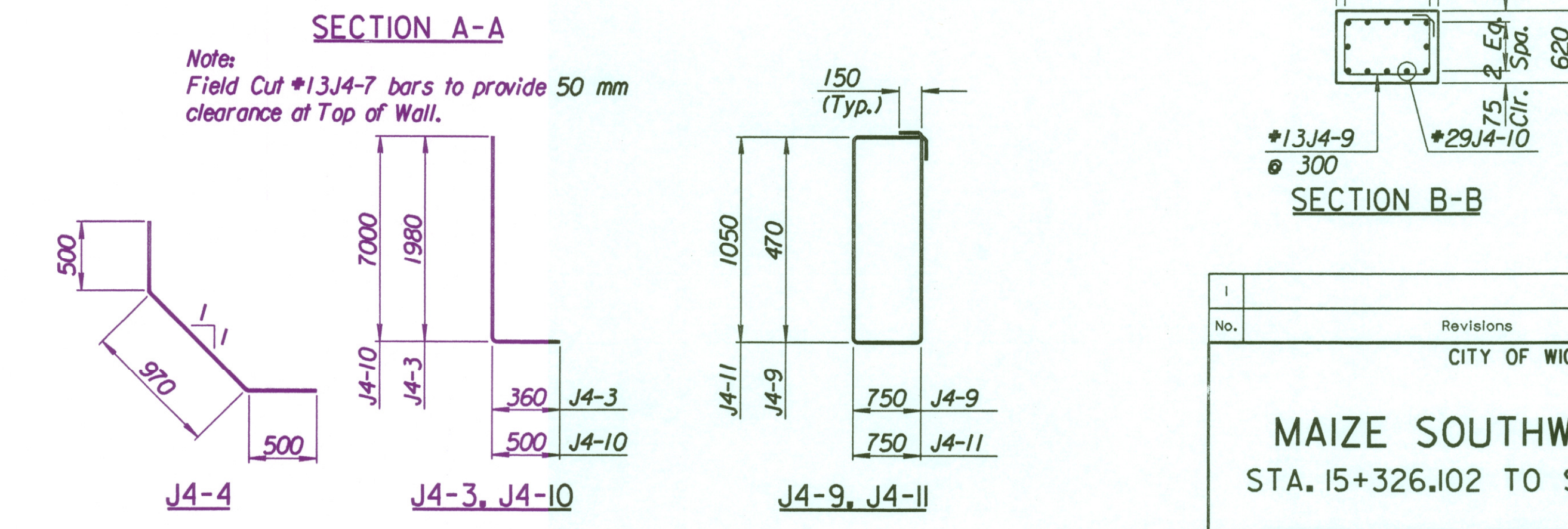
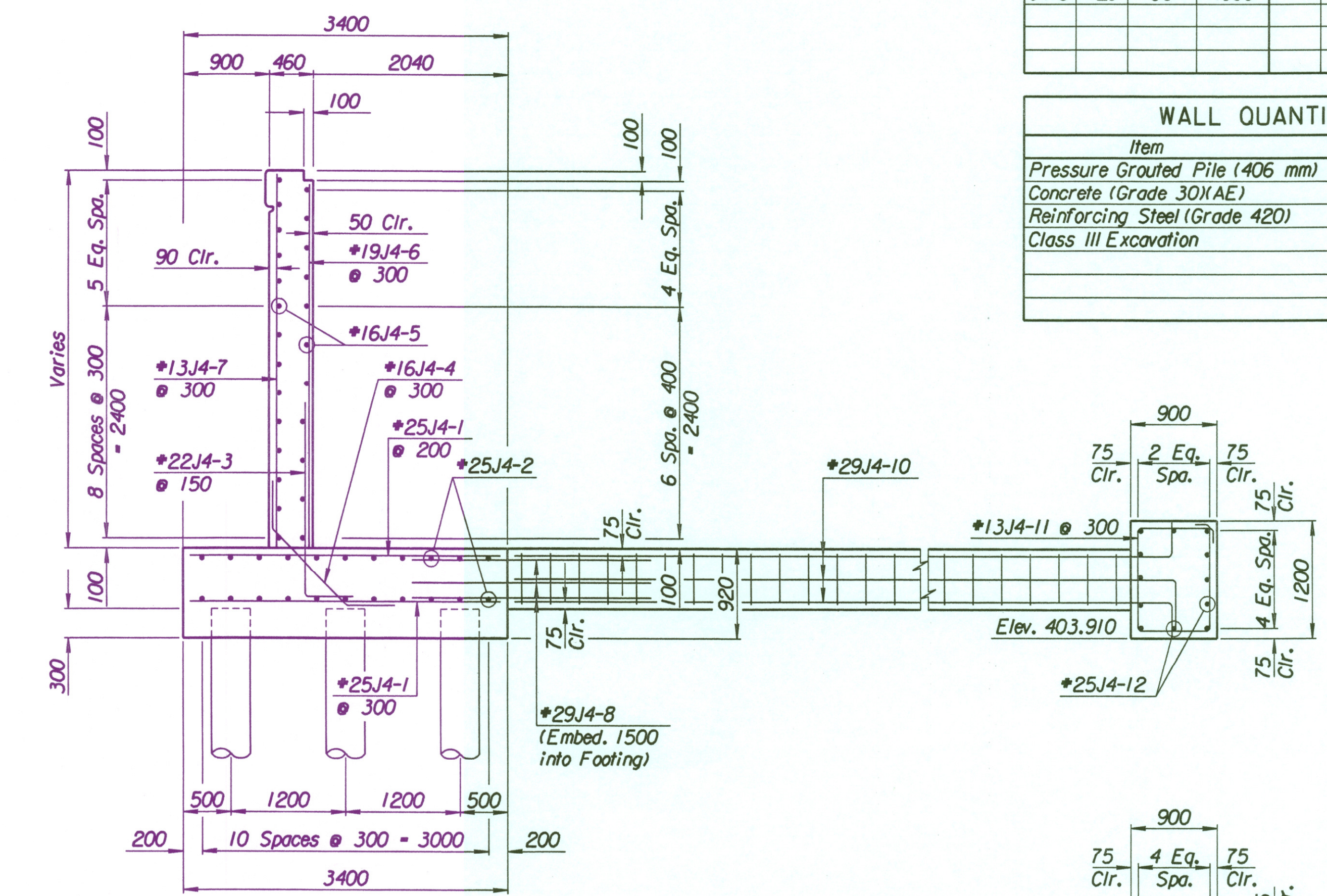
REINFORCING STEEL							
Straight Bars			Bent Bars				
Mark	Size	Number	Length	Mark	Size	Number	Length
J4-1	*25	164	3320	J4-3	*22	130	2340
J4-2	*25	44	10 670	J4-4	*16	66	1970
J4-5	*16	50	9650				
J4-6	*19	66	3570				
J4-7	*13	66	3990				
J4-8	*29	36	4000				

WALL QUANTITIES		
Item	Quantity	Unit
Pressure Grouted Pile (406 mm)	216.0	m
Concrete (Grade 30)(AE)	95.7	m ³
Reinforcing Steel (Grade 420)	7421	kg
Class III Excavation	131.9	m ³



TIE BACK REINFORCING STEEL							
Straight Bars				Bent Bars			
Mark	Size	Number	Length	Mark	Size	Number	Length
J4-12	*25	24	10 170	J4-9	*13	66	2740
				J4-10	*29	36	7500
				J4-11	*13	63	3900

TIE BACK QUANTITIES		
Item	Quantity	Unit
Concrete (Grade 30)(AE)	30.9	m ³
Reinforcing Steel (Grade 420)	2760	kg



No.	Revisions	By	Date

CITY OF WICHITA

MAIZE SOUTHWEST WALL

STA. 15+326.102 TO STA. 15+345.505
SEDGWICK COUNTY

Professional Engineering Consultants, P.A.
303 S. TOPEKA • WICHITA, KANSAS 67202
316-262-2691 • FAX 316-262-3003

Designed by	P.D.F.	Checked by	R.A.S.
Drawn by	W.L.L.	Date	Apr. 2002
		Job No.	97362

Drawn by: wil
 Plotted by: drp
 3-25-2002
 i:\1997\97362\001\bridge\maizerd\SWWall-4