

STATE	PROJECT NO.	YEAR	SHEET NO.	TOTAL SHEETS
KANSAS	54-87 K-6657-01	2002	313	1122

LAYOUT INFORMATION

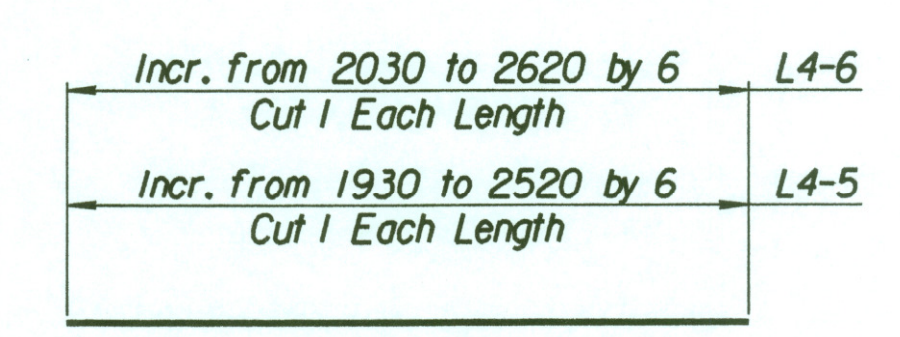
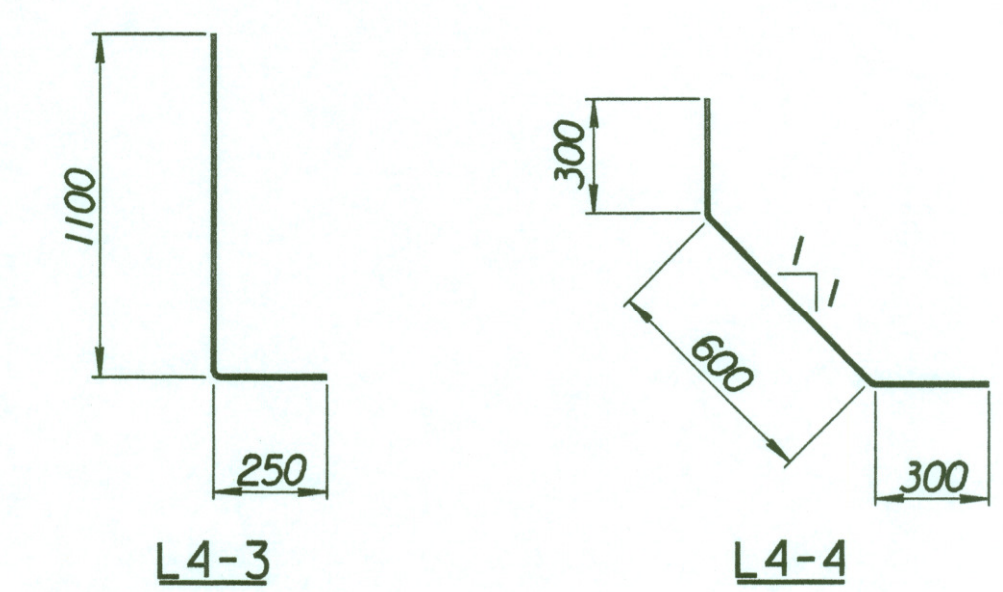
Point No.	North Coordinate	East Coordinate	Station	Offset
1	511318.411	491274.012	15+267.893	19.395 Rt.
2	511321.796	491273.691	15+267.893	15.995 Rt.
3	511324.668	491302.779	15+296.997	15.995 Rt.
4	511321.286	491303.127	15+296.997	19.395 Rt.

REINFORCING STEEL

Straight Bars				Bent Bars			
Mark	Size	Number	Length	Mark	Size	Number	Length
L4-1	*16	246	3320	L4-3	*16	195	1350
L4-2	*13	44	14 960	L4-4	*13	99	1200
L4-5	*16	99	Varies				
L4-6	*13	99	Varies				
L4-7	*13	51	9650				

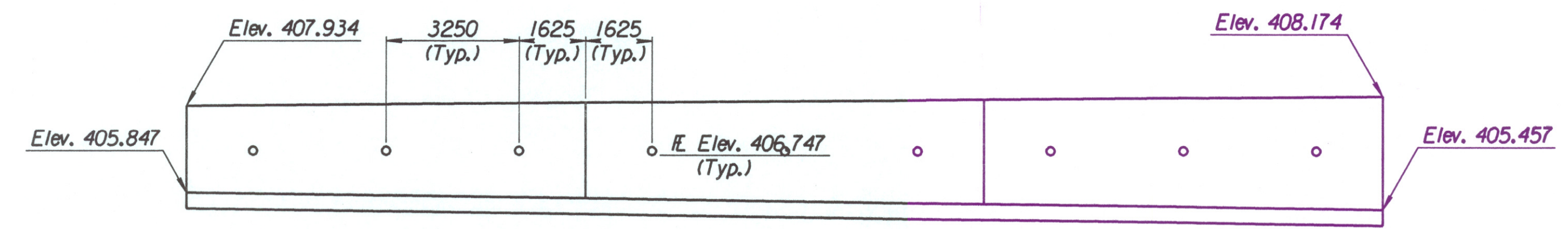
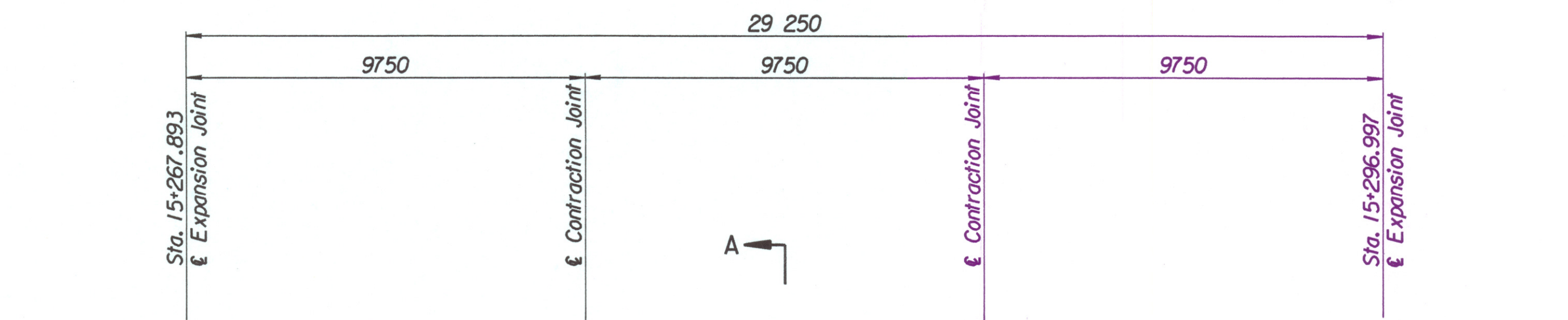
WALL QUANTITIES

Item	Quantity	Unit
Concrete (Grade 30)(AE)	61.4	m ³
Reinforcing Steel (Grade 420)	3508	kg
Class III Excavation	125.1	m ³

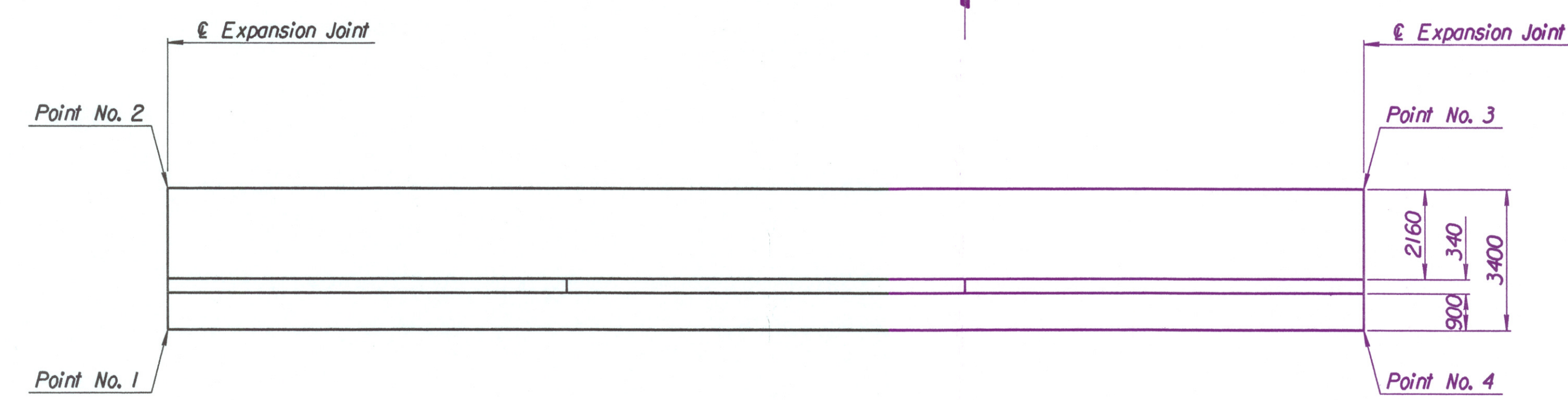


BENDING DIAGRAMS

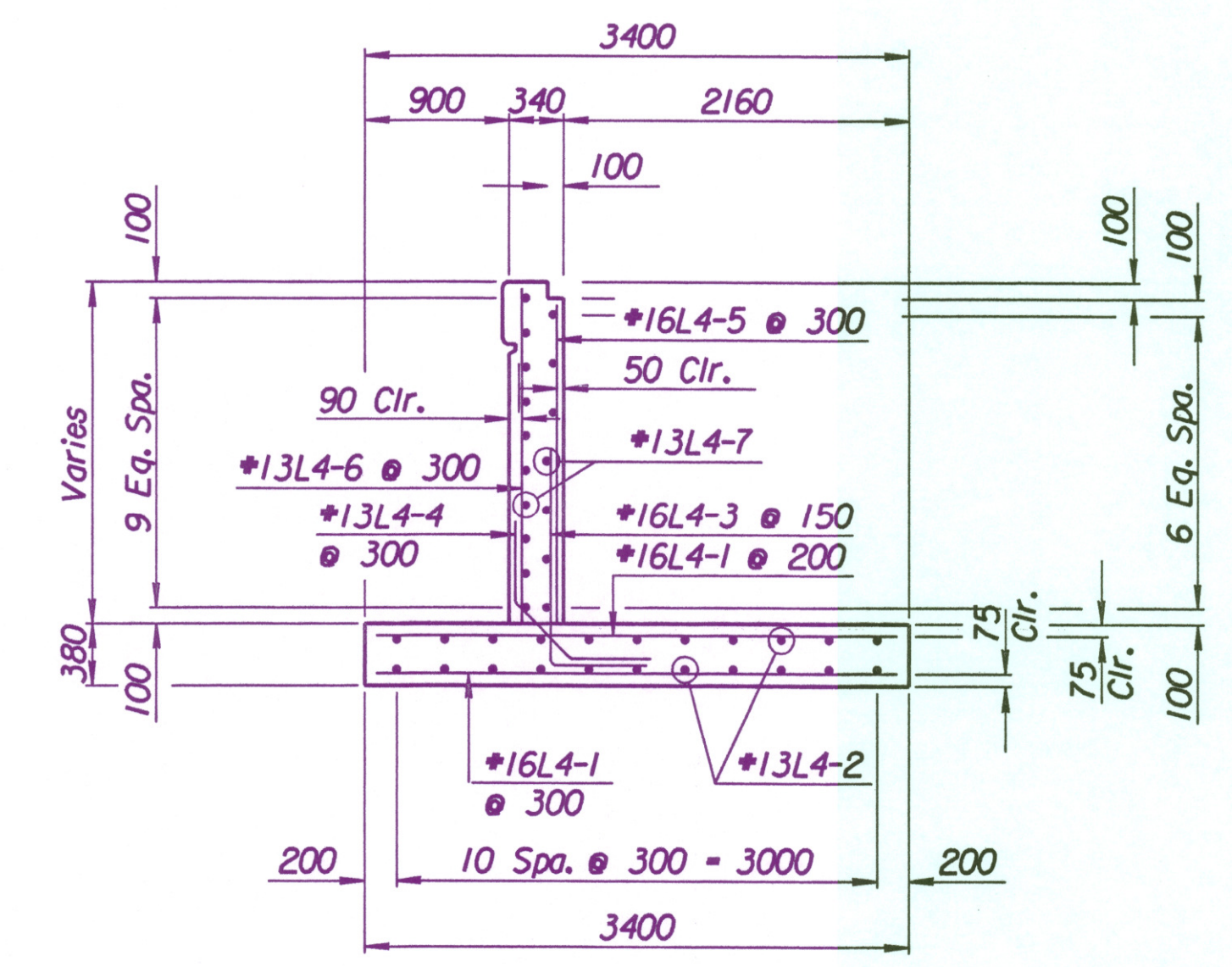
All dimensions are out to out of bars.



ELEVATION



PLAN



SECTION A-A

Drawn by: will
Plotted by: drp 3-25-2002
i:/1997/97362/001/bridge/maizerd/SWWall-2

No.	Revisions	By	Date
CITY OF WICHITA			
MAIZE SOUTHWEST WALL			
STA. 15+267.893 TO STA. 15+296.997			
SEDGWICK COUNTY			
Professional Engineering Consultants, P.A. <small>303 S. TOPEKA • WICHITA, KANSAS 67202 316-262-2601 • FAX 316-262-3003</small>			
Designed by	P.D.F.	Checked by	R.A.S.
Drawn by	W.L.L.	Date	Apr., 2002
		Job No.	97362