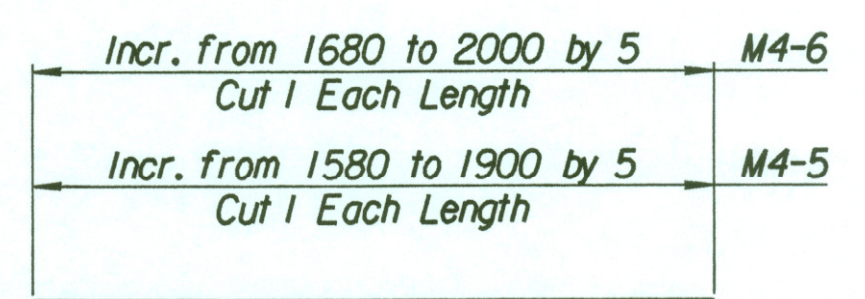
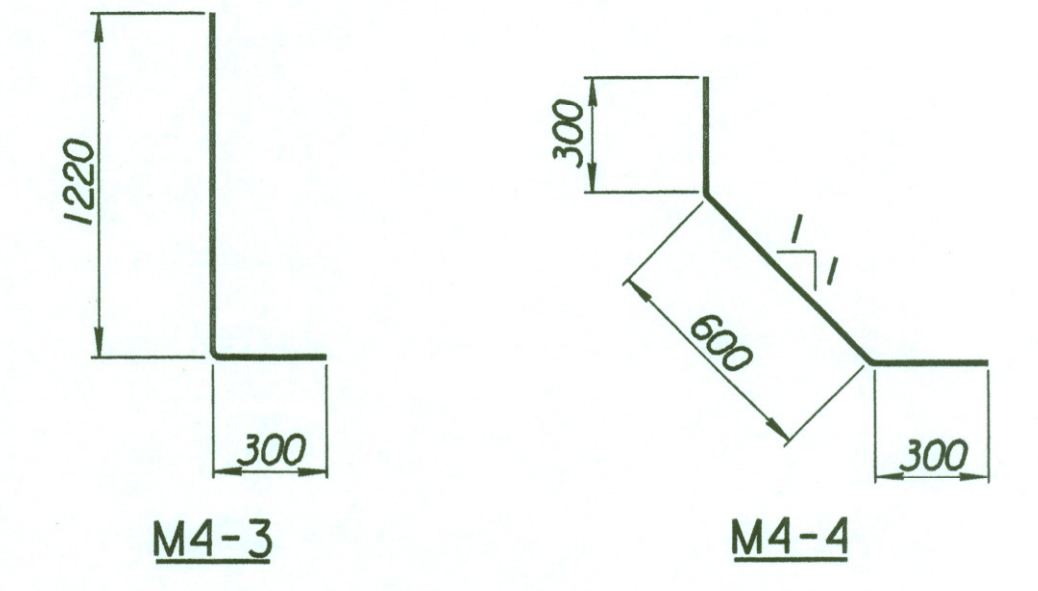
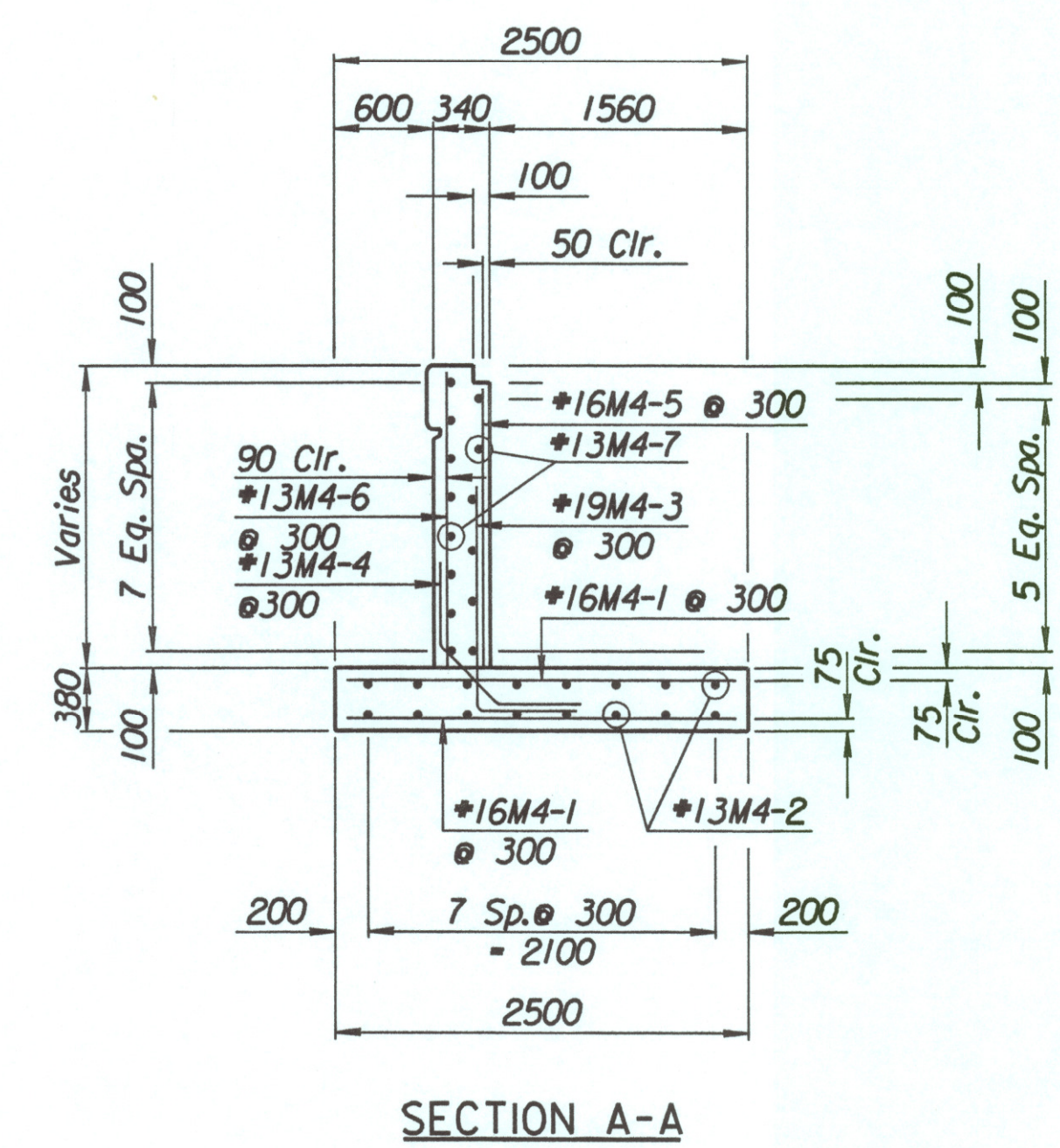
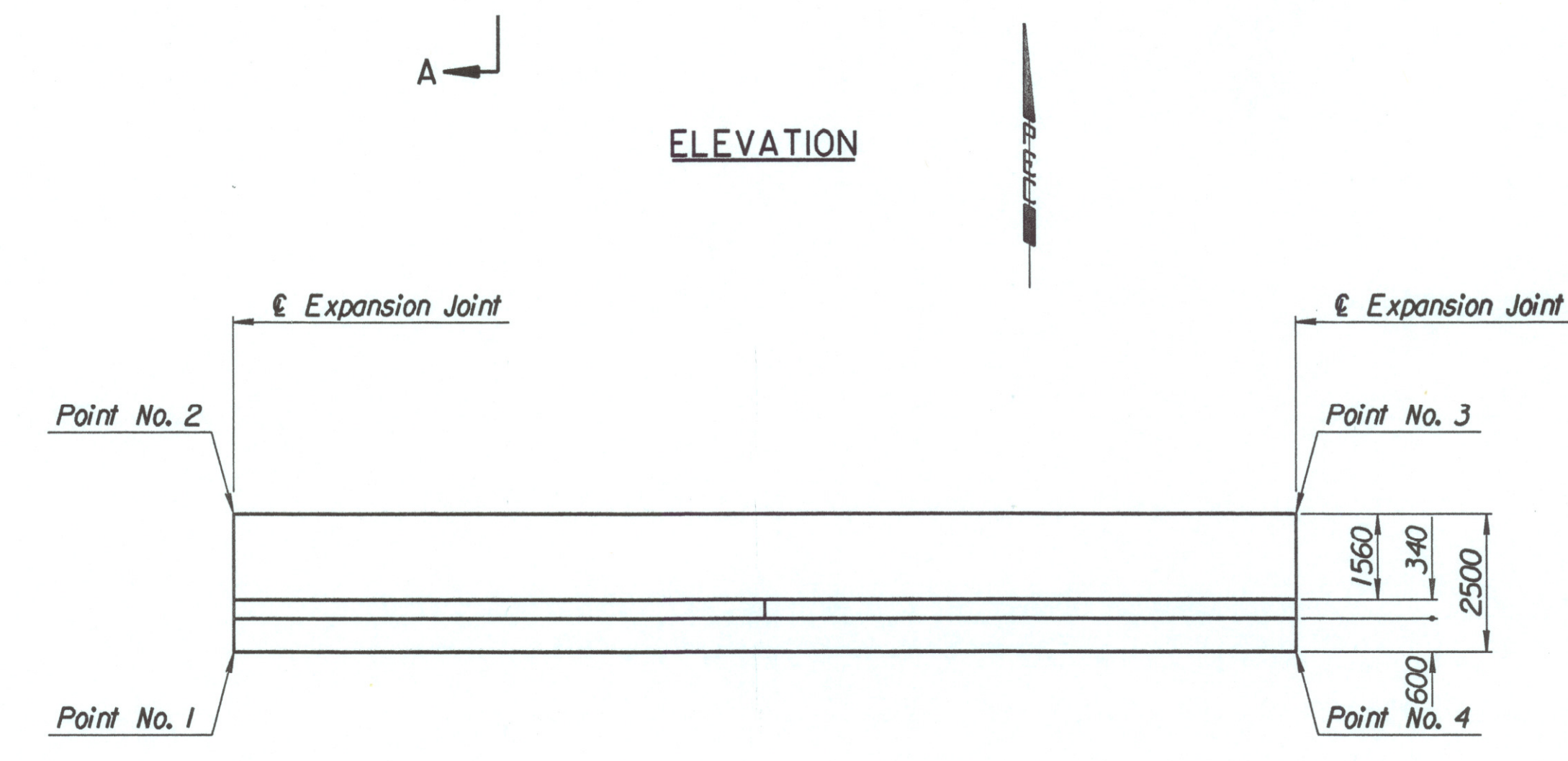
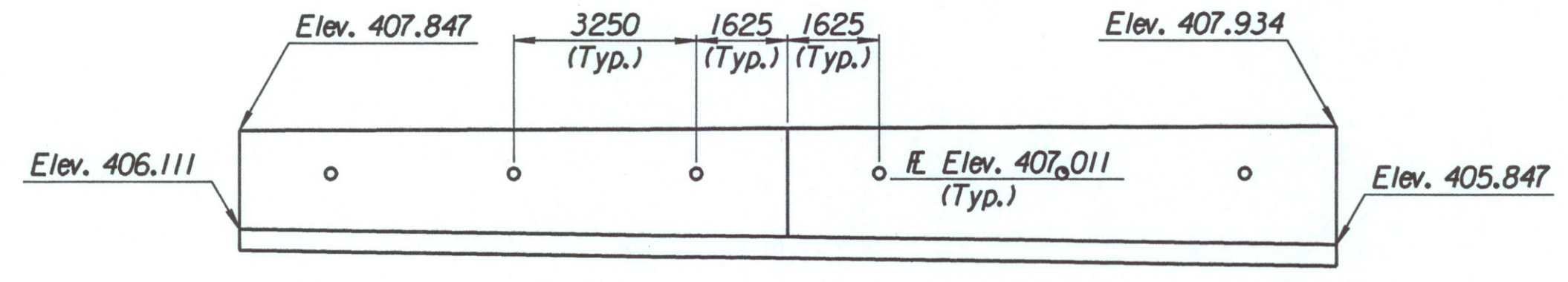
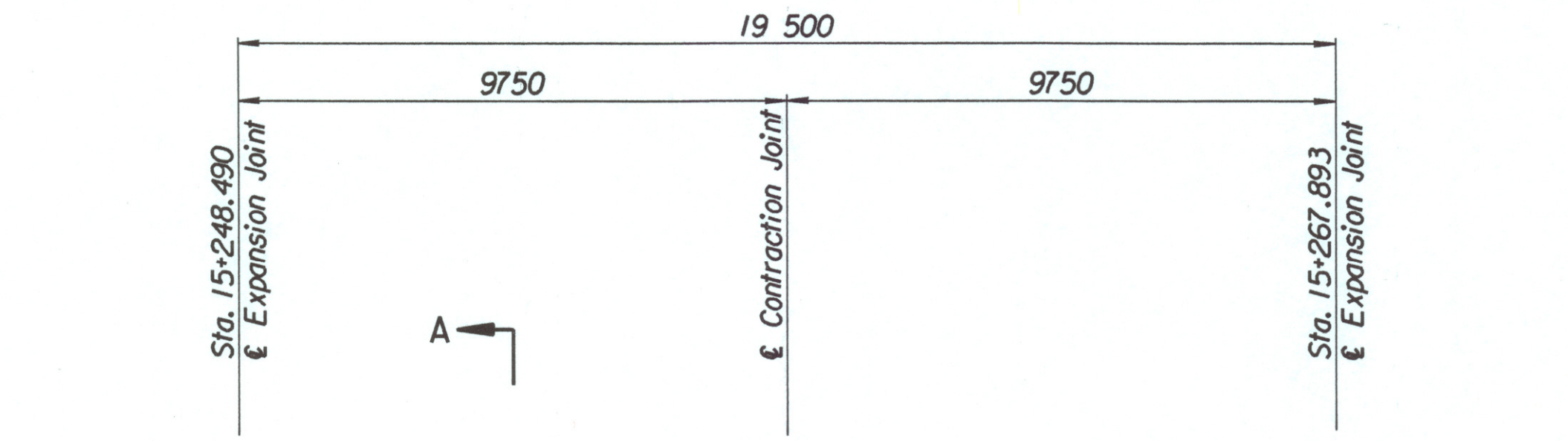


STATE	PROJECT NO.	YEAR	SHEET NO.	TOTAL SHEETS
KANSAS	54-87 K-6657-01	2002	314	1122

LAYOUT INFORMATION				
Point No.	North Coordinate	East Coordinate	Station	Offset
1	511316.921	491254.563	15+248.490	19.095 Rt.
2	511319.411	491254.340	15+248.490	16.595 Rt.
3	511321.199	491273.748	15+267.893	16.595 Rt.
4	511318.710	491273.983	15+267.893	19.095 Rt.

REINFORCING STEEL						
Straight Bars				Bent Bars		
Mark	Size	Number	Length	Mark	Size	Number
M4-1	*16	132	2420	M4-3	*19	66
M4-2	*13	32	10 100	M4-4	*13	66
M4-5	*16	66	Varies			
M4-6	*13	66	Varies			
M4-7	*13	28	9650			

WALL QUANTITIES		
Item	Quantity	Unit
Concrete (Grade 30)(AE)	31.0	m ³
Reinforcing Steel (Grade 420)	1687	kg
Class III Excavation	46.6	m ³



BENDING DIAGRAMS
All dimensions are out to out of bars.

PLAN

SECTION A-A

ELEVATION

Drawn by: wll
Plotted by: drp
3-25-2002
1:1/997/97362/001/bridge/maizerd/SWwall-1

No.	Revisions	By	Date
CITY OF WICHITA			
MAIZE SOUTHWEST WALL			
STA. 15+248.490 TO STA. 15+267.893			
SEDGWICK COUNTY			
Professional Engineering Consultants, P.A. 303 S. TOPEKA • WICHITA, KANSAS 67202 316-262-2691 • FAX 316-262-3003			
Designed by	P.D.F.	Checked by	R.A.S.
Drawn by	W.L.L.	Date	Apr. 2002
		Job No.	97362