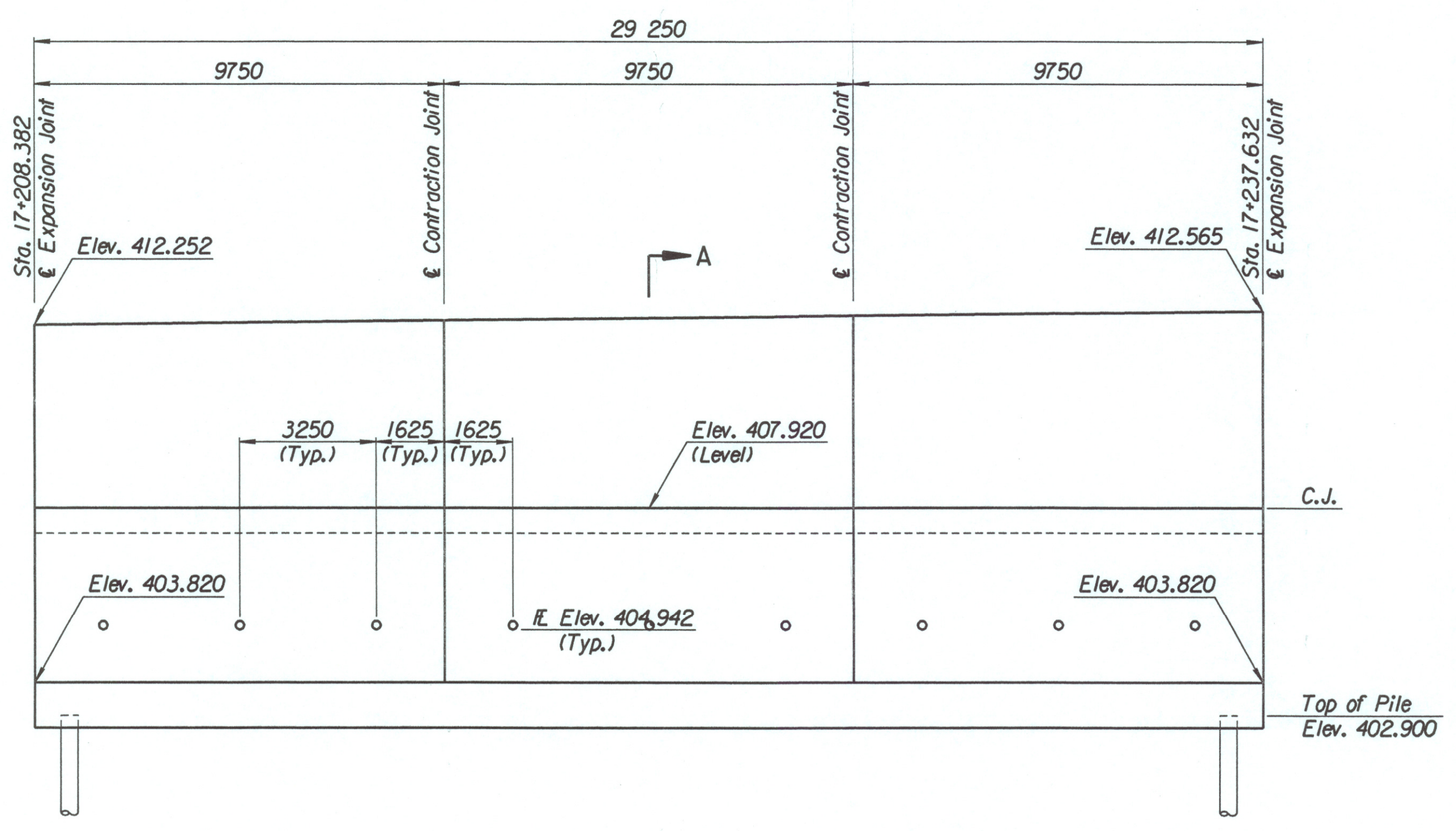


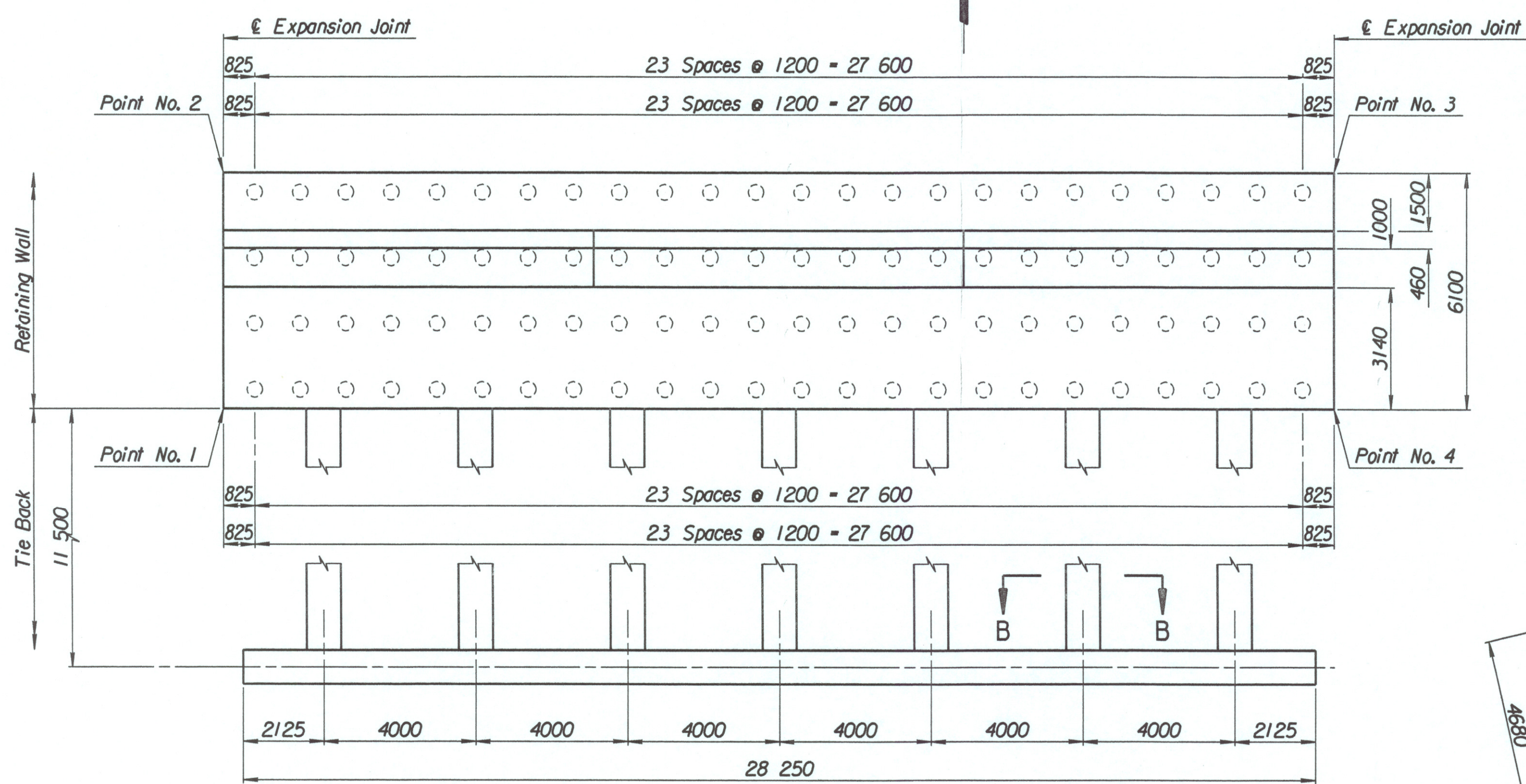
LAYOUT INFORMATION				
Point No.	North Coordinate	East Coordinate	Station	Offset
1	511965.094	493093.723	17+208.382	13.895 Lt.
2	511970.627	493091.154	17+208.382	19.995 Lt.
3	511982.948	493117.682	17+237.632	19.995 Lt.
4	511977.416	493120.251	17+237.632	13.895 Lt.

REINFORCING STEEL							
Straight Bars			Bent Bars				
Mark	Size	Number	Length	Mark	Size	Number	Length
B5-1	*29	312	6020	B5-3	*29	195	5180
B5-2	*25	80	15 540	B5-4	*22	195	3200
				B5-5	*32	294	3060
B5-6	*32	195	6760				
B5-7	*13	99	5020	B5-9	*19	99	1350
B5-8	*16	192	9650				
B5-10	*19	99	4180				
B5-11	*13	99	4280				
B5-12	*29	84	4000				

WALL QUANTITIES		
Item	Quantity	Unit
Pressure Grouted Pile (406 mm)	1152.0	m
Concrete (Grade 30/1AE)	384.1	m <sup>3</sup>
Reinforcing Steel (Grade 420)	42 370	kg
Class III Excavation	320.8	m <sup>3</sup>



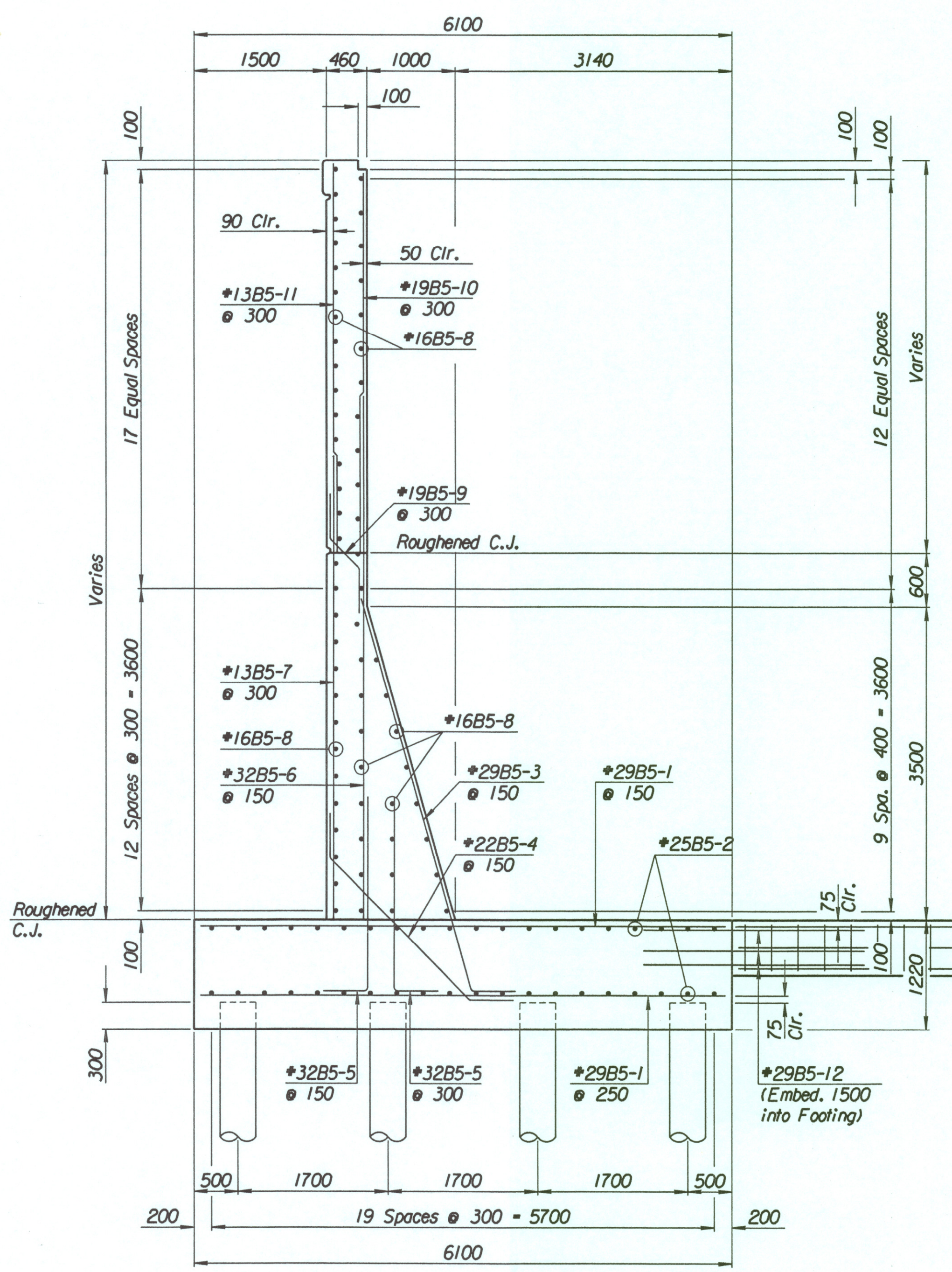
ELEVATION



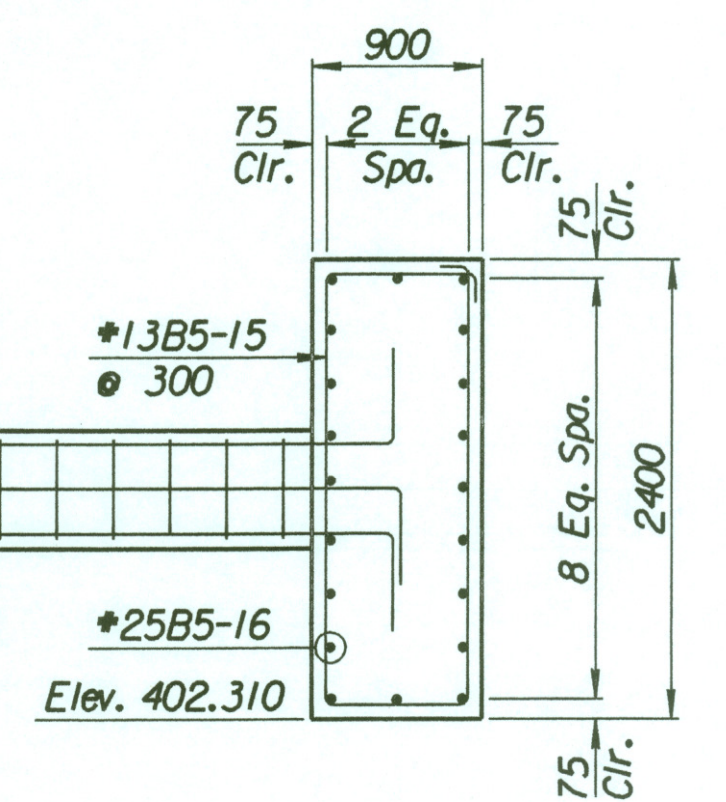
PLAN

TIE BACK REINFORCING STEEL							
Straight Bars				Bent Bars			
Mark	Size	Number	Length	Mark	Size	Number	Length
B5-16	*25	40	15 040	B5-13	*13	259	2740
				B5-14	*29	84	12 000
				B5-15	*13	94	6300

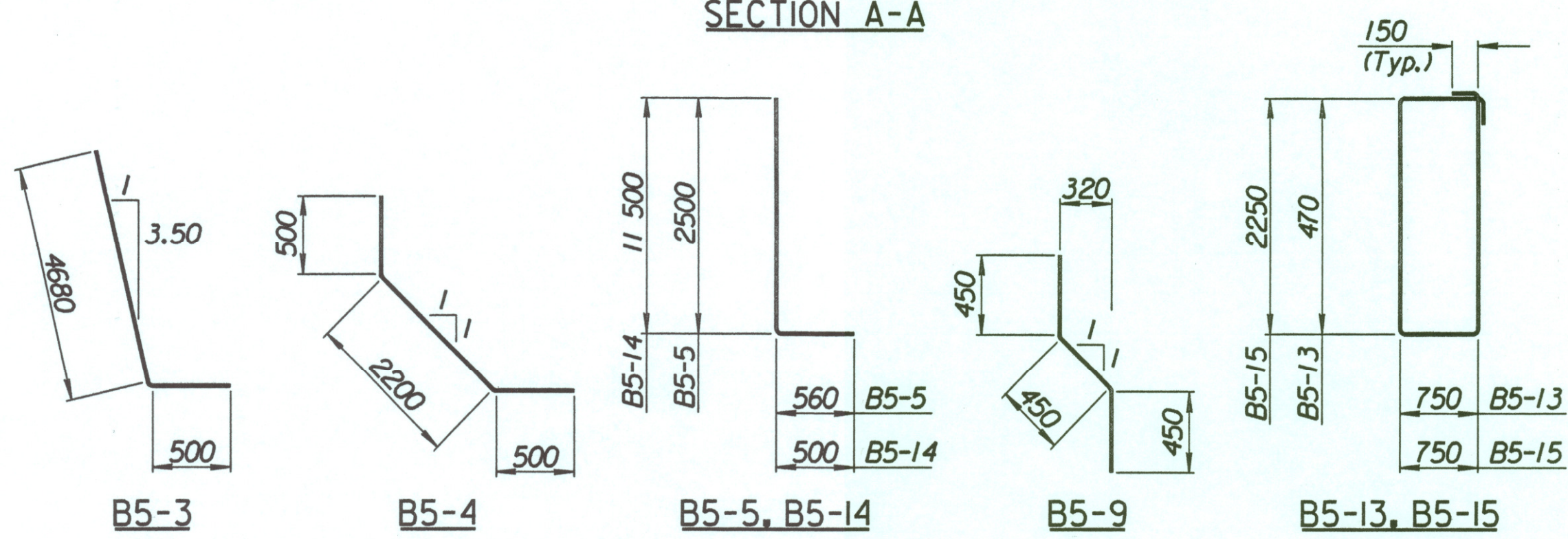
TIE BACK QUANTITIES		
Item	Quantity	Unit
Concrete (Grade 30/1AE)	104.2	m <sup>3</sup>
Reinforcing Steel (Grade 420)	8785	kg



SECTION A-A



SECTION B-B



BENDING DIAGRAMS  
All dimensions are out to out of bars.

No.	Revisions	By	Date

CITY OF WICHITA  
**TYLER NORTHWEST WALL**  
STA. 17+208.382 TO STA. 17+237.632  
SEDGWICK COUNTY

Professional Engineering Consultants, P.A.  
303 S. TOPEKA • WICHITA, KANSAS 67202  
316-262-2691 • FAX 316-262-3003  
Designed by P.D.F. Checked by R.A.S.  
Drawn by W.L.L. Date April, 2002 Job No. 97362

Drawn by: wil  
Plotted by: drp  
4-11-2002  
is:1997/97362/001/bridge/tylernd/NWwall-2