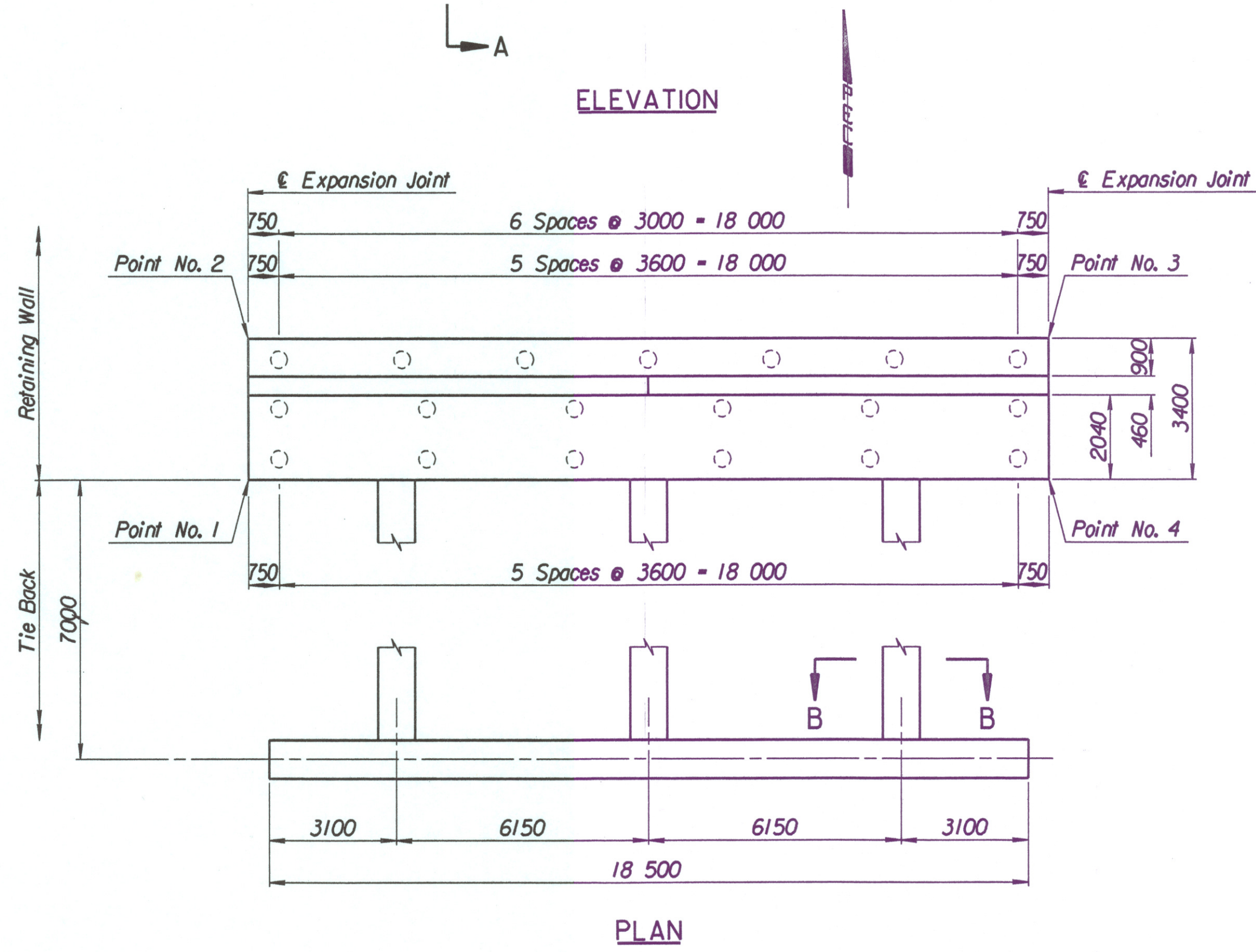
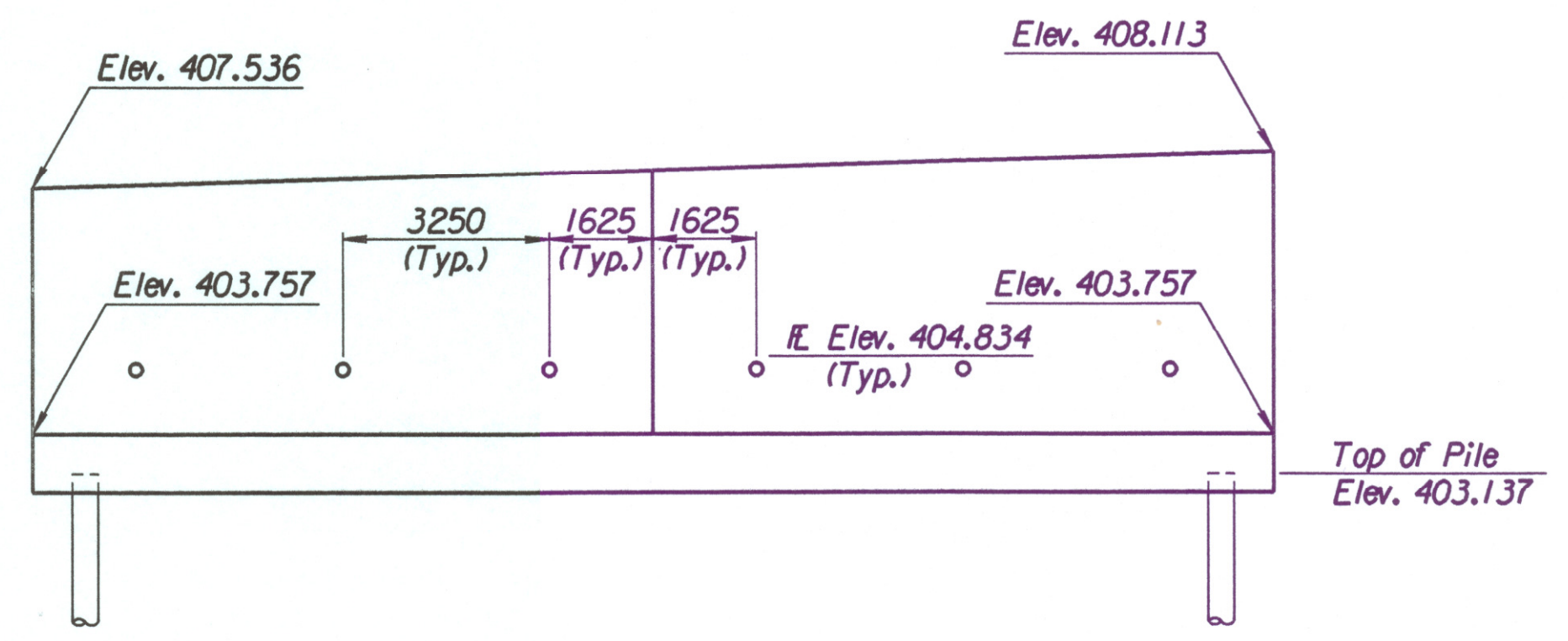
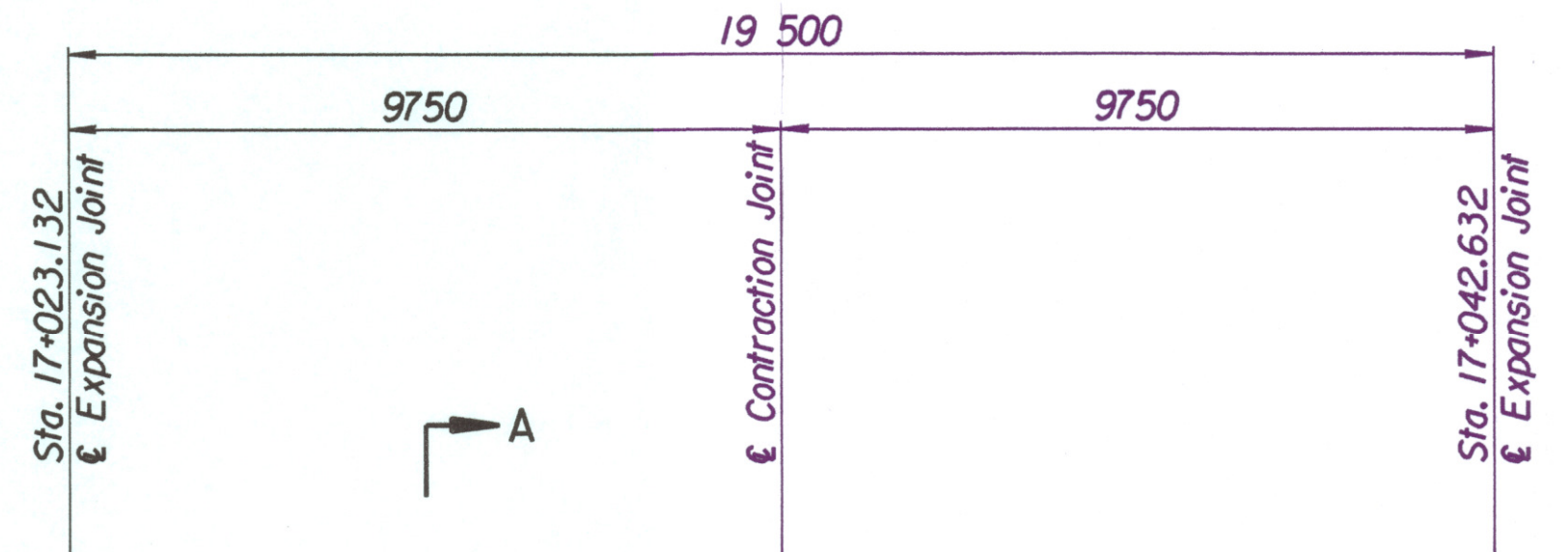


STATE	PROJECT NO.	YEAR	SHEET NO.	TOTAL SHEETS
KANSAS	54-87 K-6657-01	2002	324	1122

Point No.	North Coordinate	East Coordinate	Station	Offset
1	511888.961	492924.828	17+023.132	15.995 Lt.
2	511892.045	492923.396	17+023.132	19.395 Lt.
3	511900.259	492941.081	17+042.632	19.395 Lt.
4	511897.176	492942.513	17+042.632	15.995 Lt.

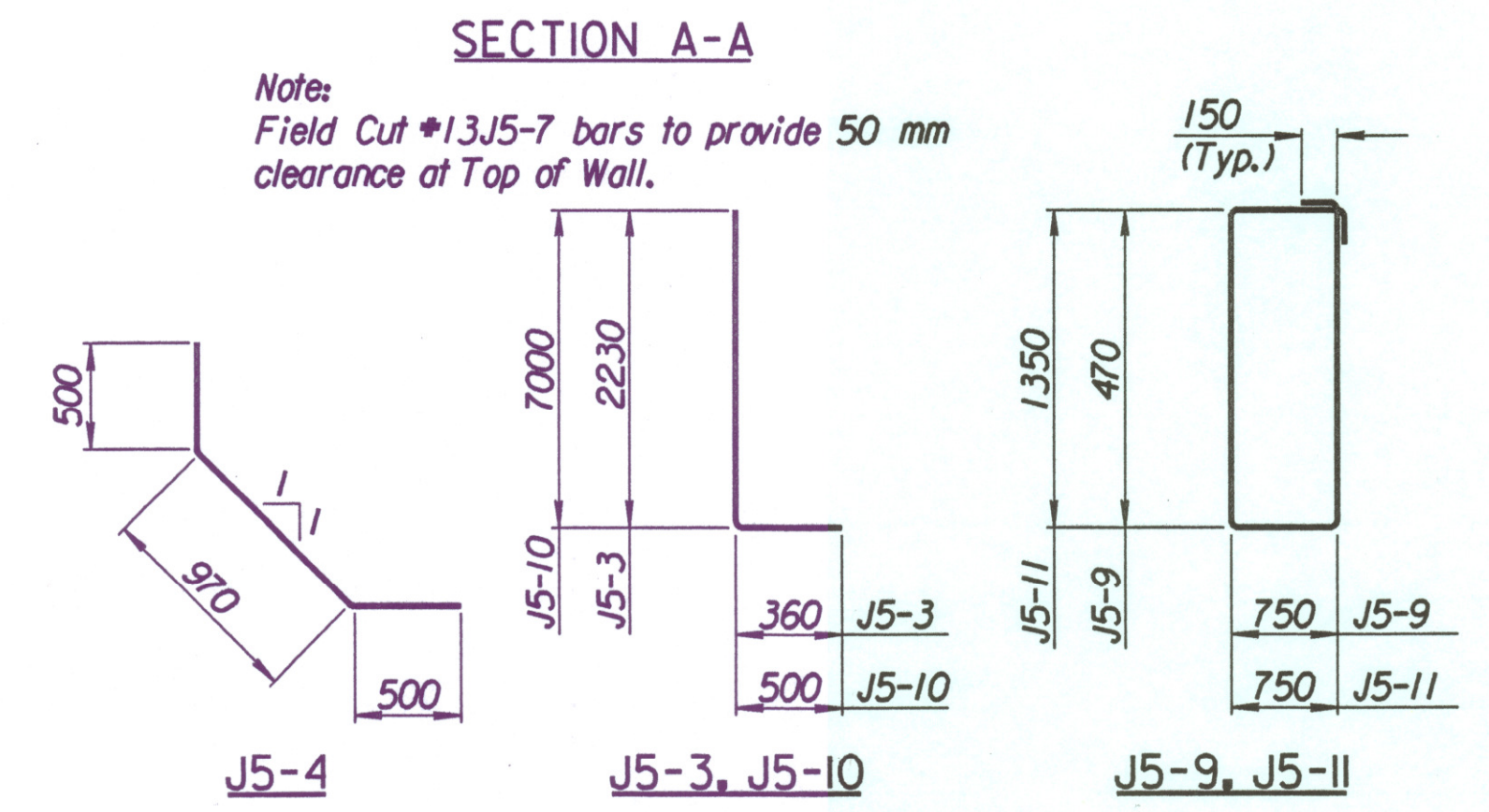
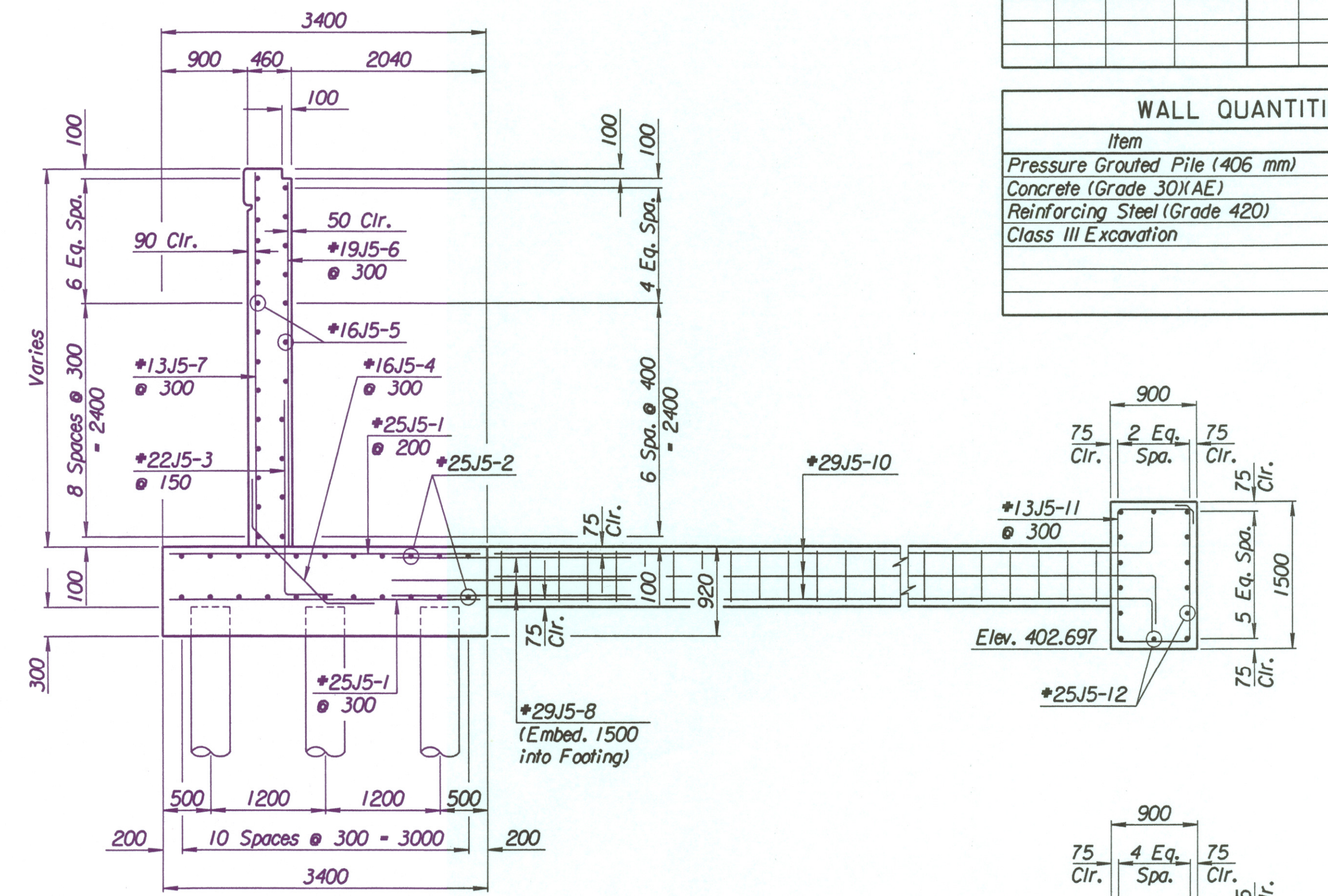
Straight Bars				Bent Bars			
Mark	Size	Number	Length	Mark	Size	Number	Length
J5-1	*25	164	3320	J5-3	*22	130	2590
J5-2	*25	44	10 670	J5-4	*16	66	1970
J5-5	*16	52	9650				
J5-6	*19	66	3630				
J5-7	*13	66	4300				
J5-8	*29	36	4000				

Item	Quantity	Unit
Pressure Grouted Pile (406 mm)	228.0	m
Concrete (Grade 30/AE)	97.3	m <sup>3</sup>
Reinforcing Steel (Grade 420)	7579	kg
Class III Excavation	37.1	m <sup>3</sup>



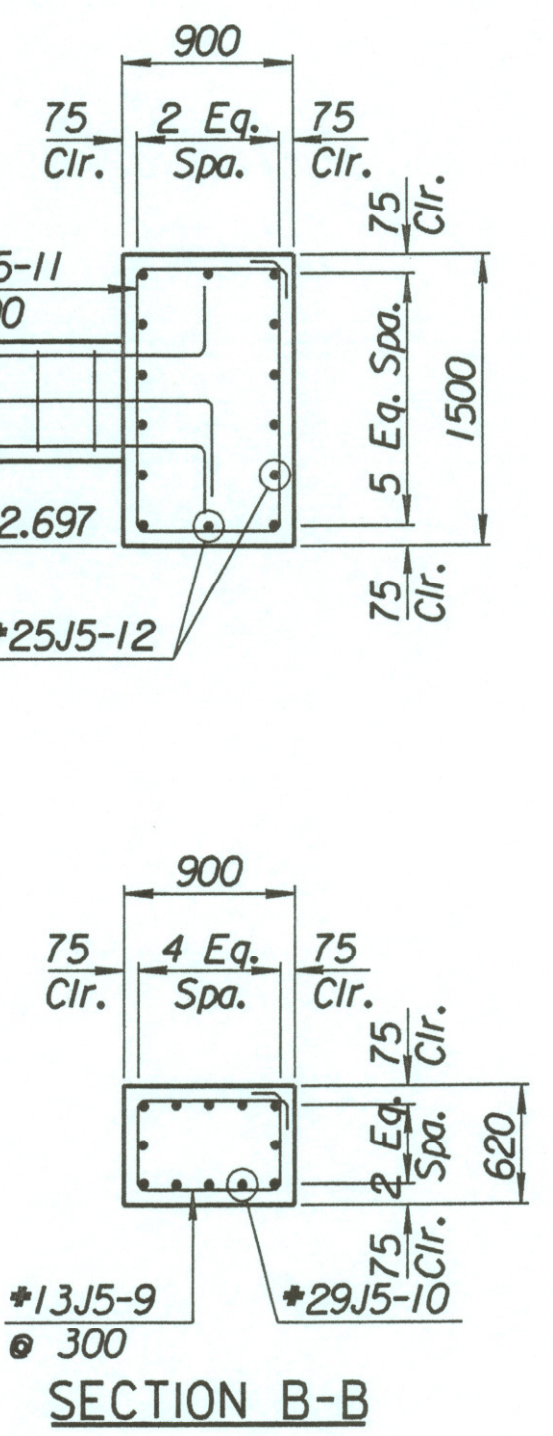
Straight Bars				Bent Bars			
Mark	Size	Number	Length	Mark	Size	Number	Length
J5-12	*25	28	10 170	J5-9	*13	66	2740
				J5-10	*29	36	7500
				J5-11	*13	63	4500

Item	Quantity	Unit
Concrete (Grade 30/AE)	35.9	m <sup>3</sup>
Reinforcing Steel (Grade 420)	2959	kg



Note:  
Field Cut #13J5-7 bars to provide 50 mm clearance at Top of Wall.

BENDING DIAGRAMS  
All dimensions are out to out of bars.



No.	Revisions	By	Date
-----	-----------	----	------

CITY OF WICHITA  
**TYLER NORTHWEST WALL**  
STA. 17+023.132 TO STA. 17+042.632  
SEDGWICK COUNTY

Professional Engineering Consultants, P.A.  
303 S. TOPEKA • WICHITA, KANSAS 67202  
316-262-2691 • FAX 316-262-3003  
Designed by P.D.F. Checked by R.A.S.  
Drawn by W.L.L. Date April, 2002 Job No. 97362

Drawn by: wil  
 Plotted by: drp  
 3-22-2002  
 i:\1997\97362\001\bridge\tylernd\NWwall-9