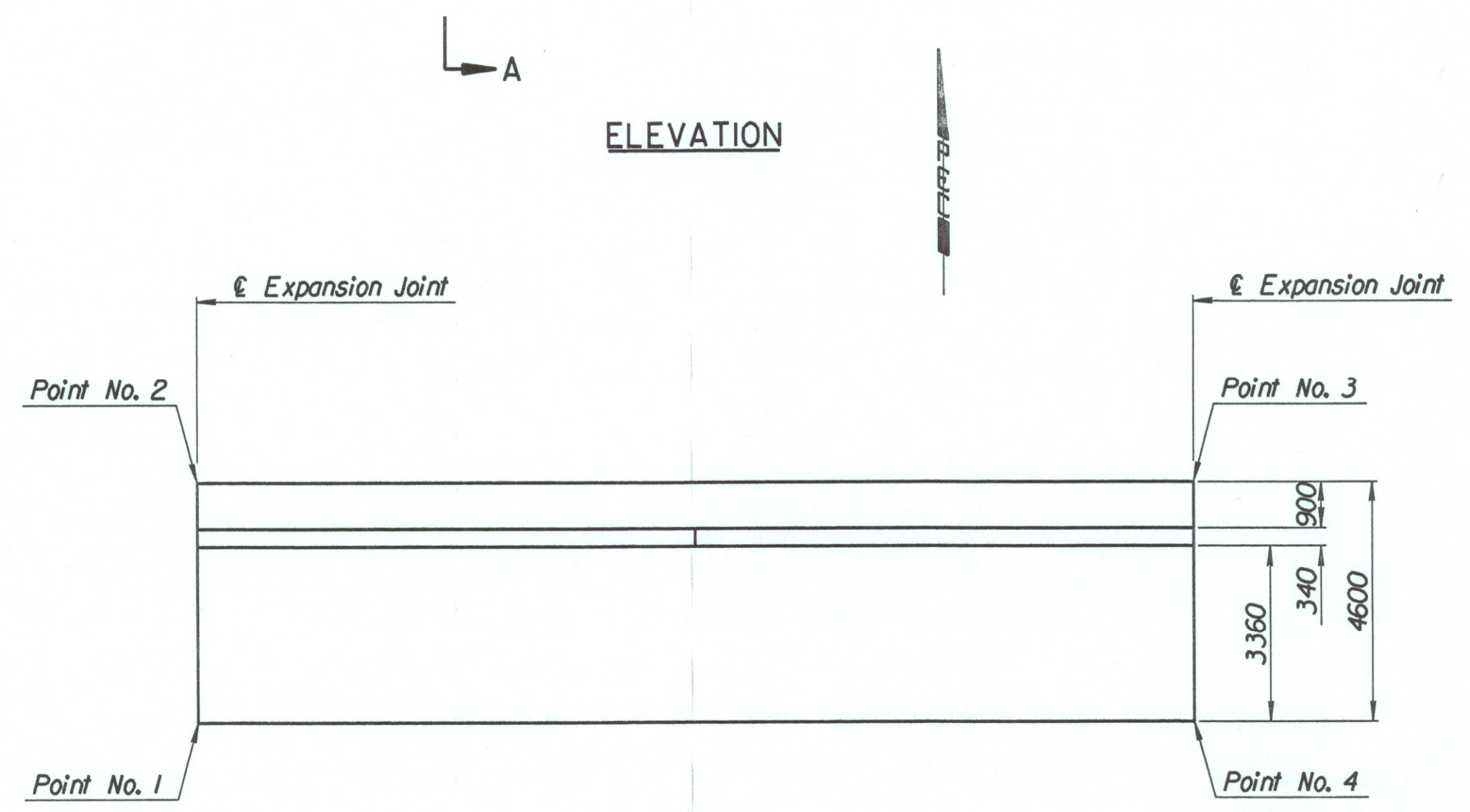
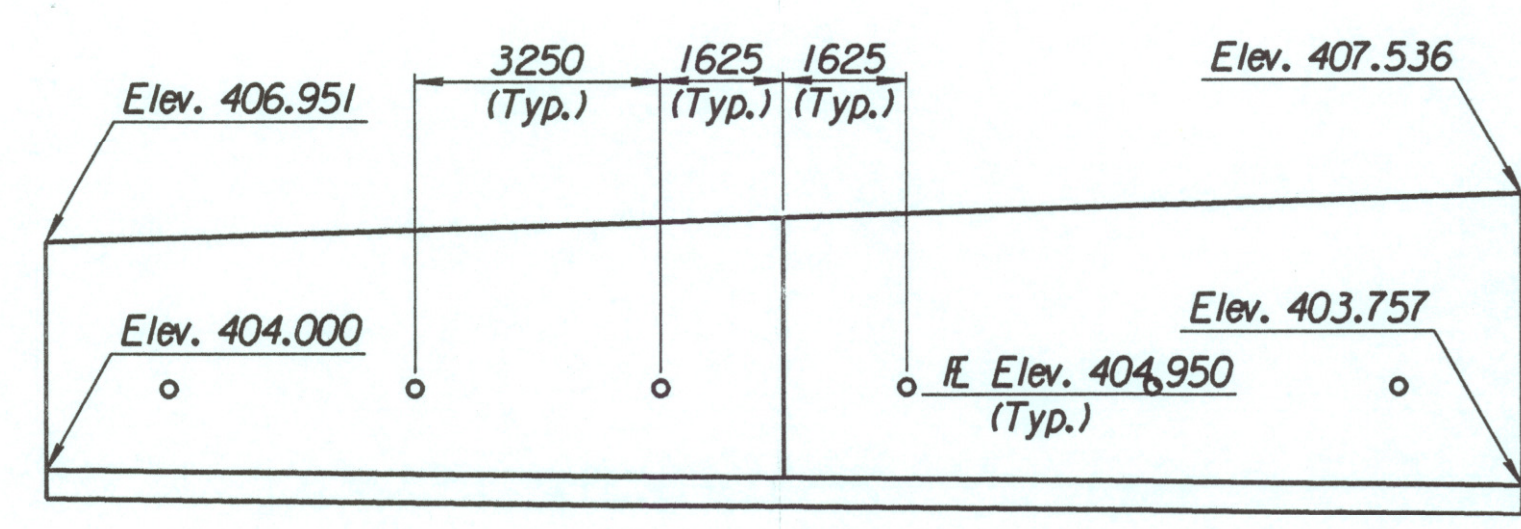
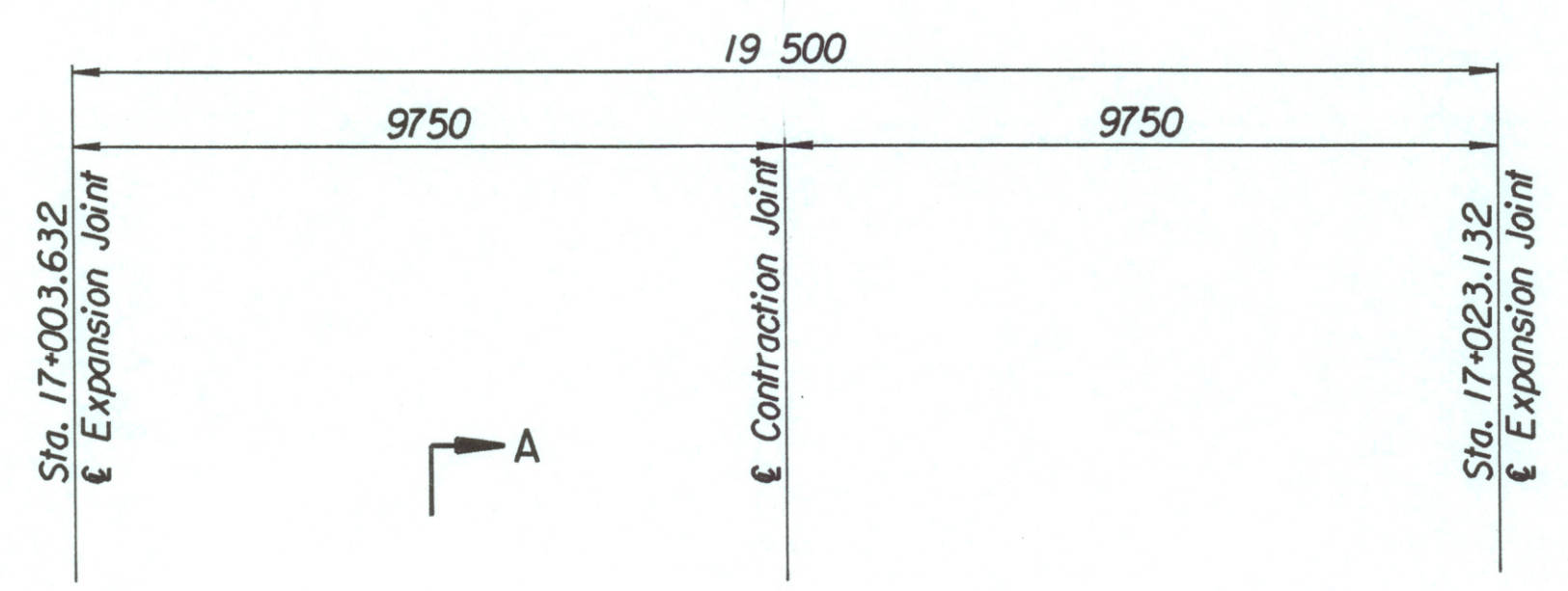


STATE	PROJECT NO.	YEAR	SHEET NO.	TOTAL SHEETS
KANSAS	54-87 K-6657-01	2002	325	1122

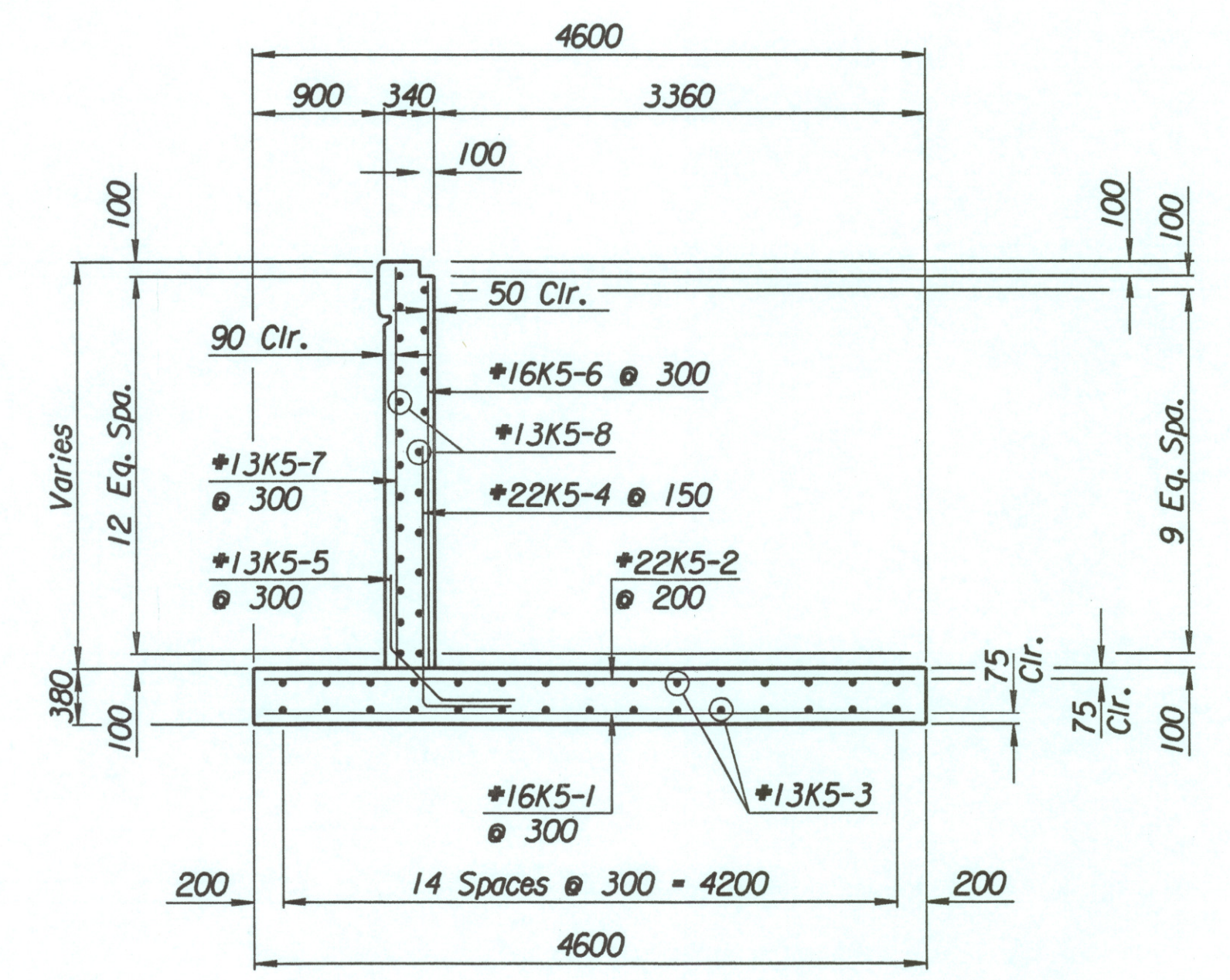
LAYOUT INFORMATION				
Point No.	North Coordinate	East Coordinate	Station	Offset
1	511879.658	492907.648	17+003.632	14.795 Lt.
2	511883.830	492905.710	17+003.632	19.395 Lt.
3	511892.045	492923.396	17+023.132	19.395 Lt.
4	511887.873	492925.333	17+023.132	14.795 Lt.

REINFORCING STEEL							
Straight Bars				Bent Bars			
Mark	Size	Number	Length	Mark	Size	Number	Length
K5-1	*16	66	4520	K5-4	*22	130	1780
K5-2	*22	98	4520	K5-5	*13	66	1200
K5-3	*13	60	10 100				
K5-6	*16	66	Varies				
K5-7	*13	66	Varies				
K5-8	*13	46	9650				

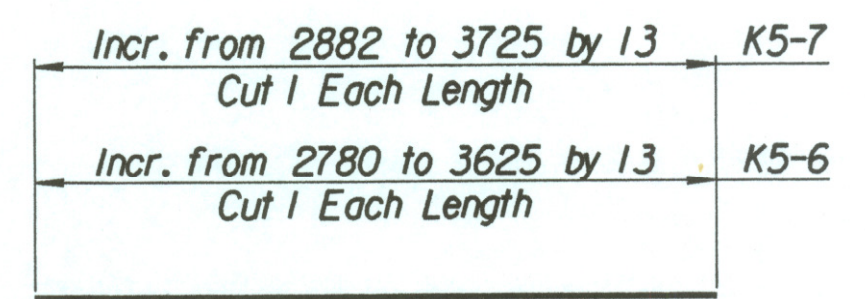
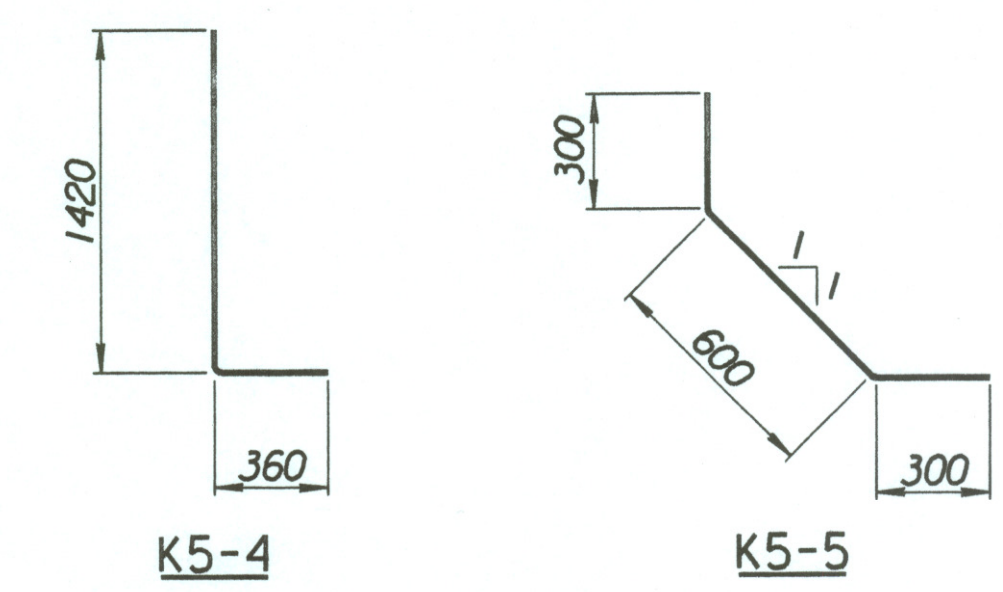
WALL QUANTITIES		
Item	Quantity	Unit
Concrete (Grade 30)(AE)	56.2	m ³
Reinforcing Steel (Grade 420)	4181	kg
Class III Excavation	0.0	m ³



PLAN



SECTION A-A



BENDING DIAGRAMS
All dimensions are out to out of bars.

Drawn by: wll
 Plotted by: drp 3-22-2002
 I:\1997\97362\001\bridge\tylerrd\NWwall-10

No.	Revisions	By	Date

CITY OF WICHITA

TYLER NORTHWEST WALL
STA. 17+003.632 TO STA. 17+023.132
SEDGWICK COUNTY

Professional Engineering Consultants, P.A.
303 S. TOPEKA • WICHITA, KANSAS 67202
316-262-2691 • FAX 316-262-3003

Designed by	P.D.F.	Checked by	R.A.S.
Drawn by	W.L.L.	Date	Apr 11, 2002
		Job No.	97362