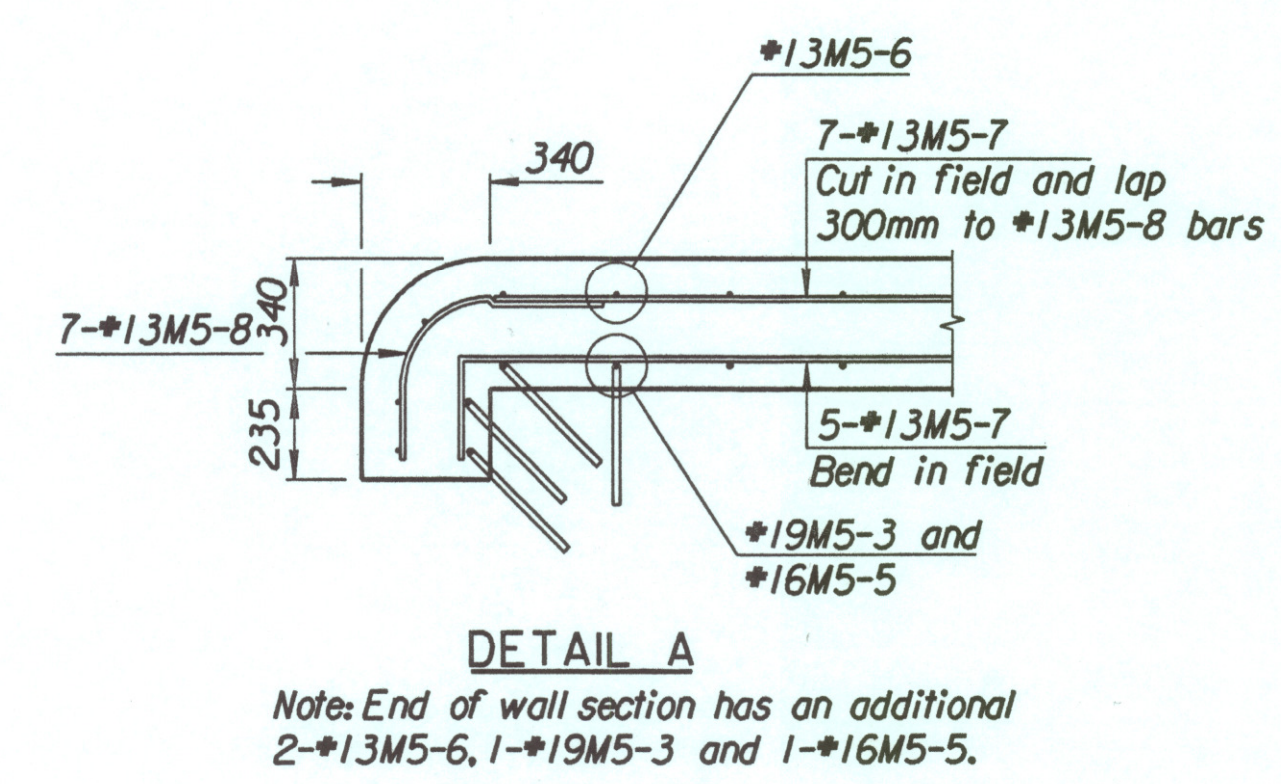
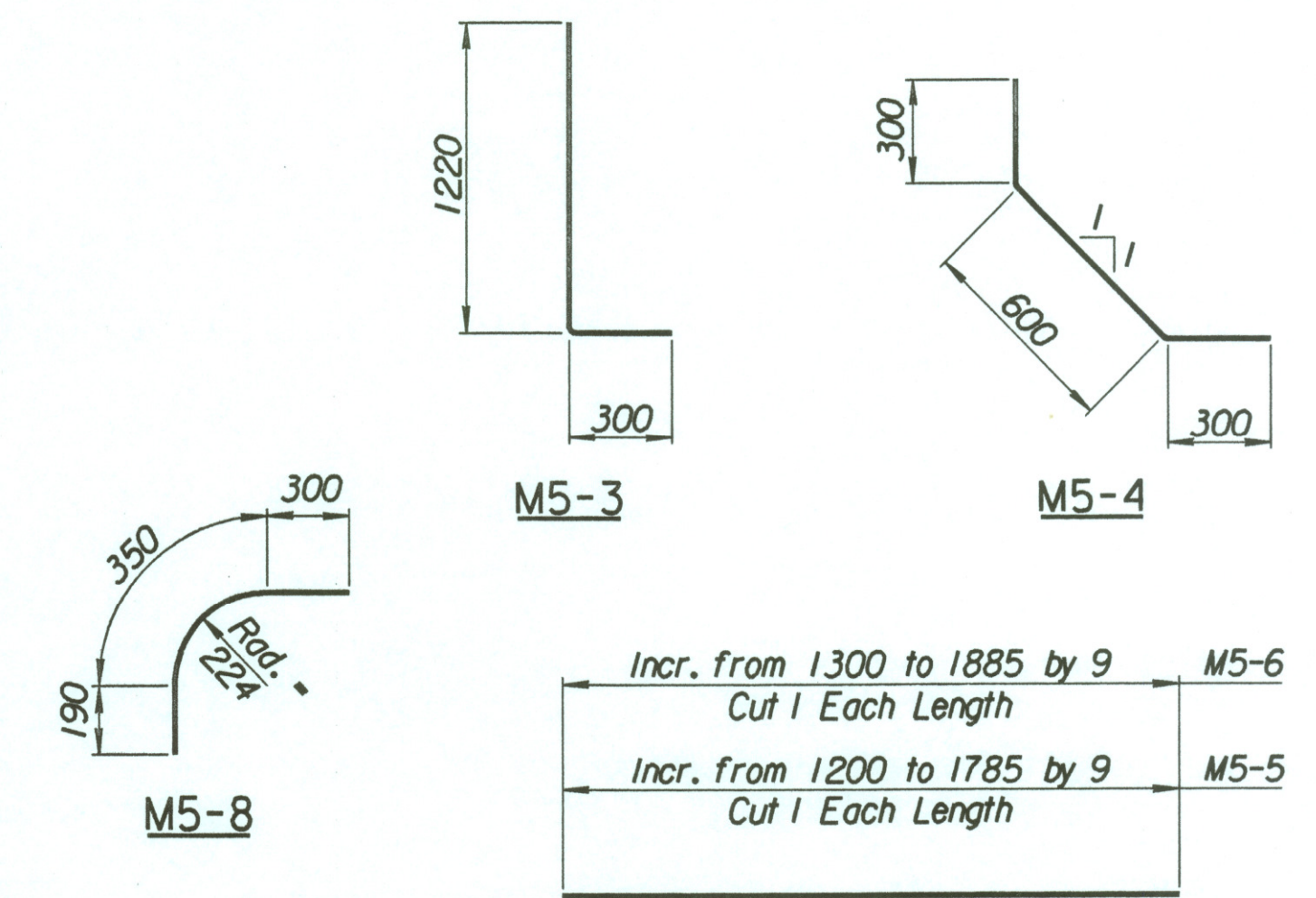
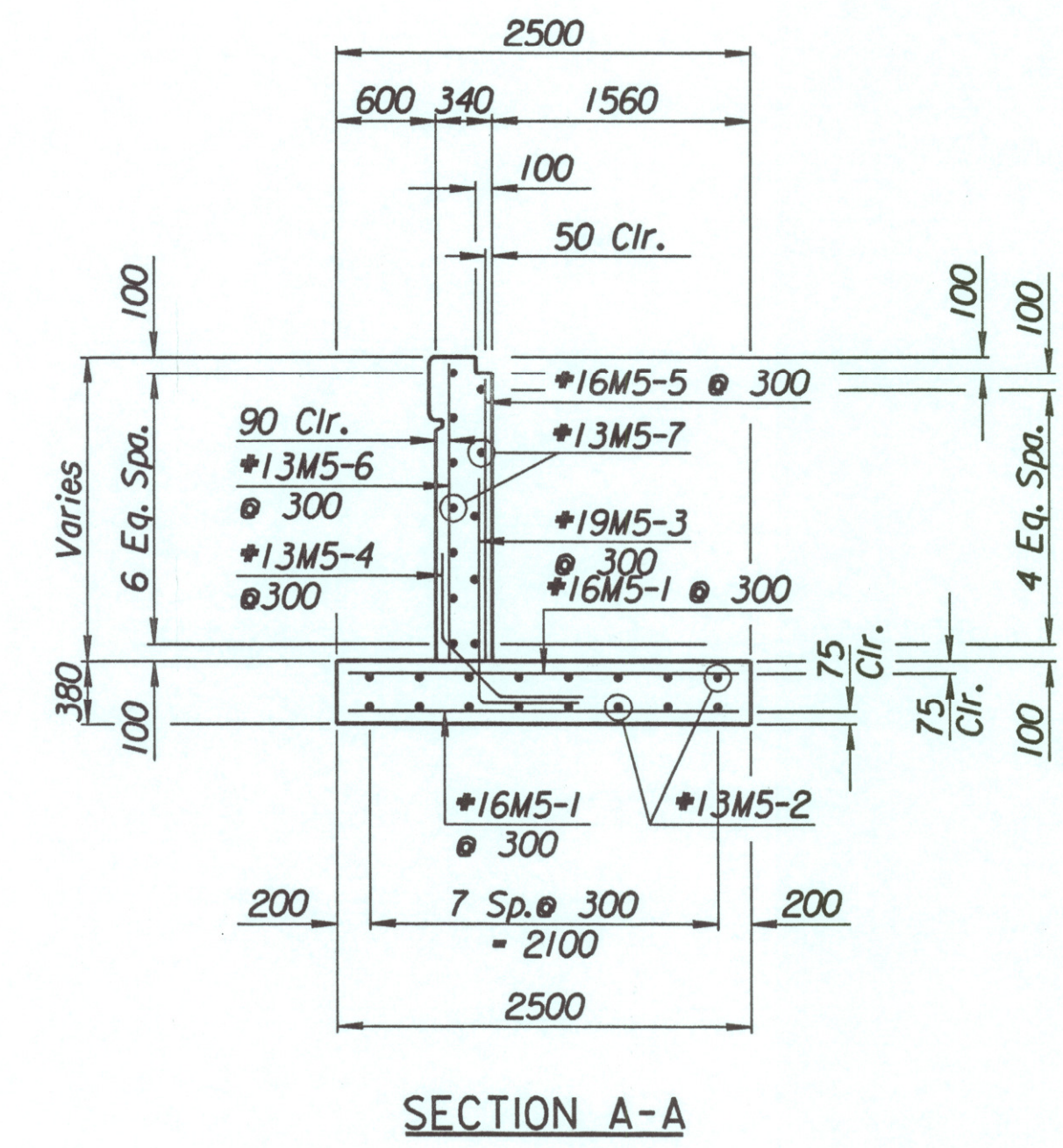
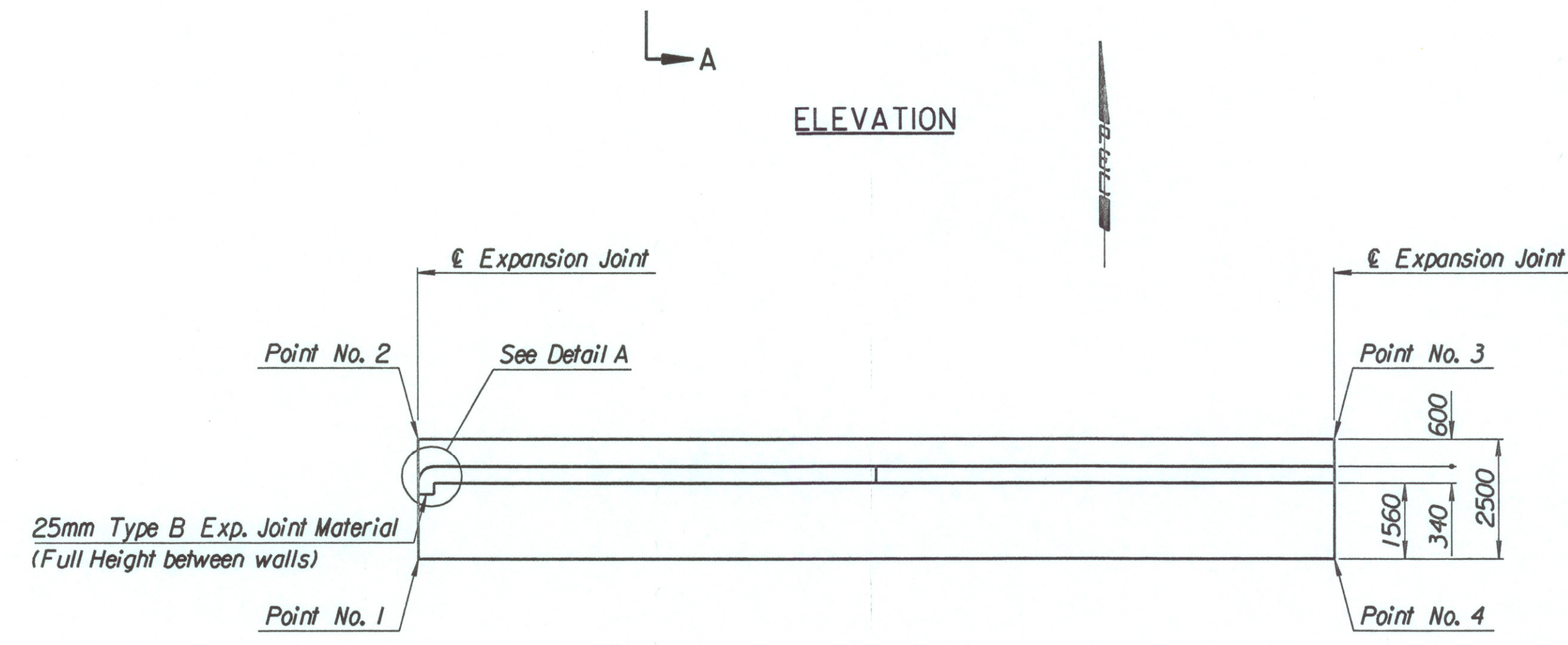
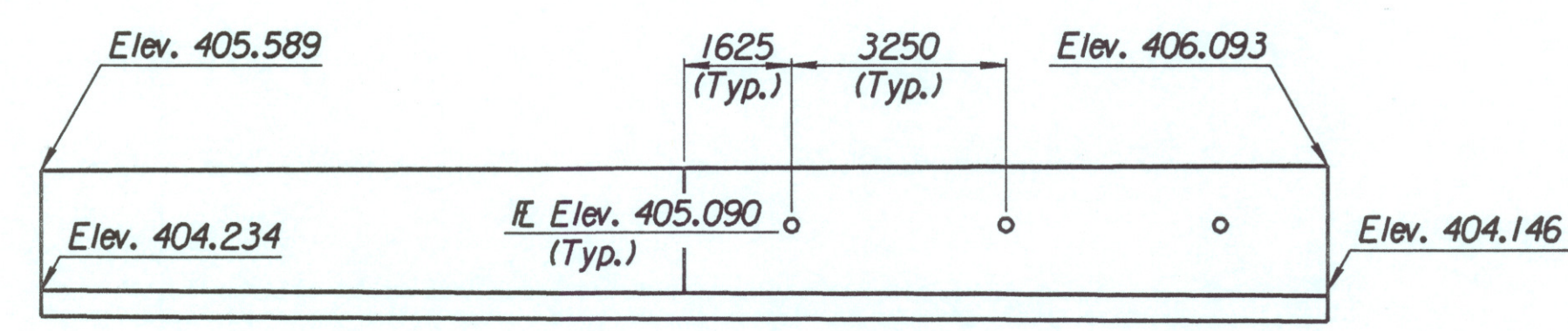
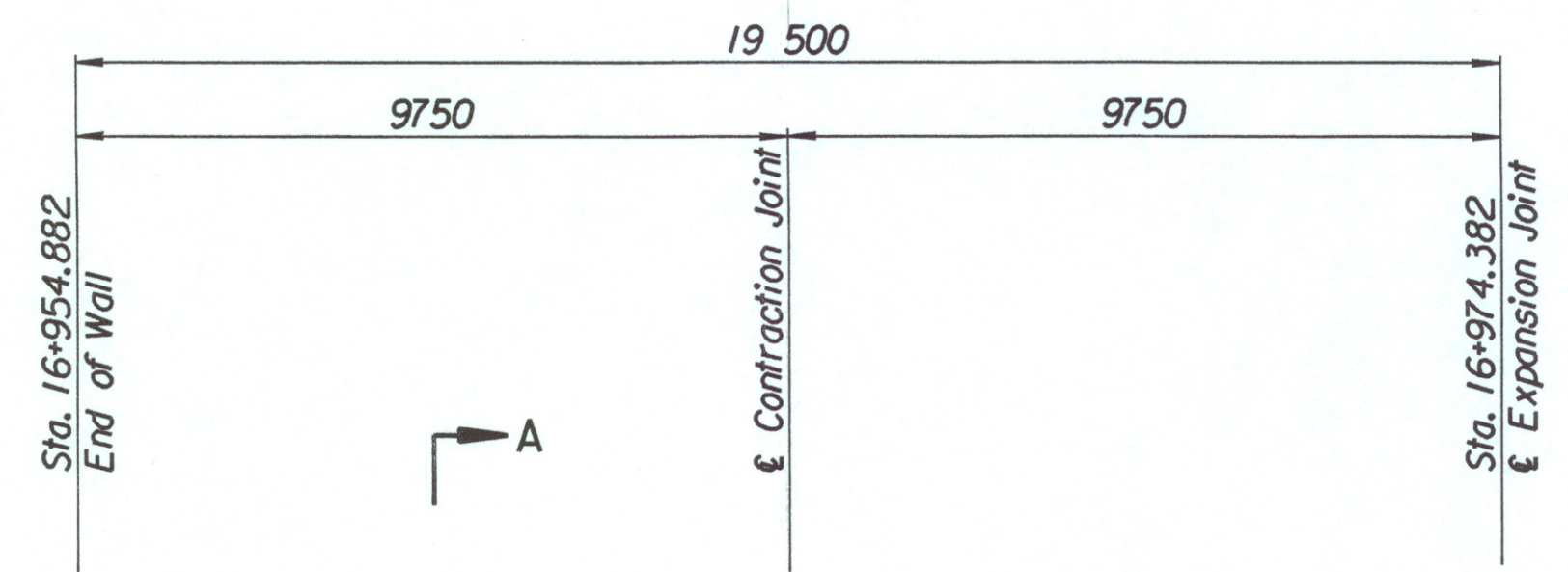


STATE	PROJECT NO.	YEAR	SHEET NO.	TOTAL SHEETS
KANSAS	54-87 K-6657-01	2002	327	1122

LAYOUT INFORMATION				
Point No.	North Coordinate	East Coordinate	Station	Offset
1	511868.969	492880.362	16+974.382	16.595 Lt.
2	511871.236	492879.309	16+974.382	19.095 Lt.
3	511863.022	492861.623	16+954.882	19.095 Lt.
4	511860.754	492862.676	16+954.882	16.595 Lt.

REINFORCING STEEL							
Straight Bars			Bent Bars				
Mark	Size	Number	Length	Mark	Size	Number	Length
M5-1	*16	132	2420	M5-3	*19	67	1520
M5-2	*13	32	10 100	M5-4	*13	66	1200
M5-5	*16	67	Varies	M5-8	*13	7	840
M5-6	*13	68	Varies				
M5-7	*13	24	9650				

WALL QUANTITIES		
Item	Quantity	Unit
Concrete (Grade 30)(AE)	29.3	m <sup>3</sup>
Reinforcing Steel (Grade 420)	1622	kg
Class III Excavation	0.0	m <sup>3</sup>



ELEVATION

PLAN

SECTION A-A

DETAIL A

BENDING DIAGRAMS  
All dimensions are out to out of bars.

Drawn by: wll  
 Plotted by: drp 3-22-2002  
 is: /997/97362/001/Bridge/tylerd/MWwall-12

No.	Revisions	By	Date
CITY OF WICHITA			
<b>TYLER NORTHWEST WALL</b> STA. 16+954.882 TO STA. 16+974.382 SEDGWICK COUNTY			
<b>Professional Engineering Consultants, P.A.</b> <small>303 S. TOPEKA • WICHITA, KANSAS 67202          316-262-2691 • FAX 316-262-3003</small>			
Designed by	P.D.F.	Checked by	R.A.S.
Drawn by	W.L.L.	Date	Apr 11, 2002 Job No. 97362