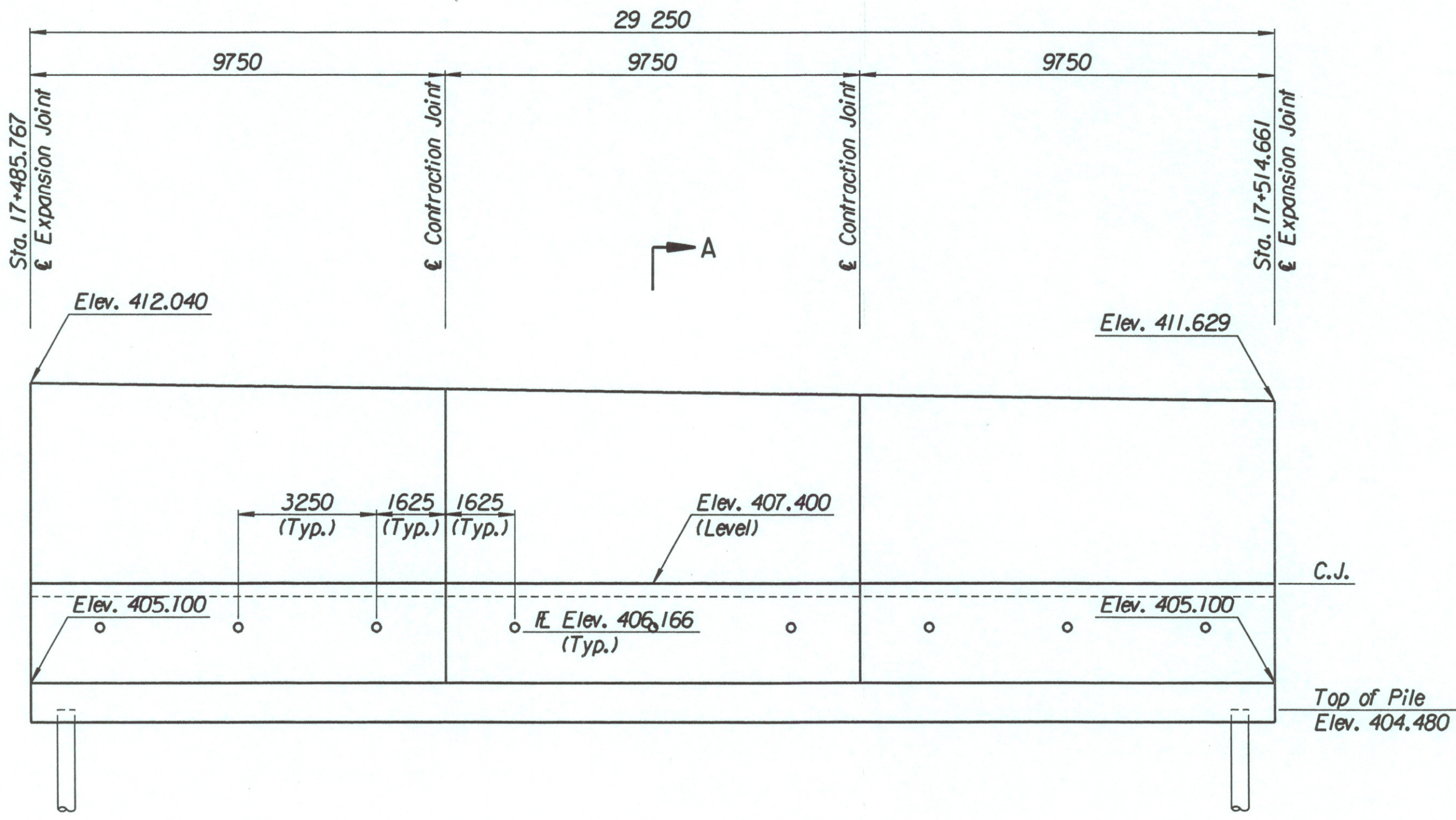


STATE	PROJECT NO.	YEAR	SHEET NO.	TOTAL SHEETS
KANSAS	54-87 K-6657-01	2002	331	1122

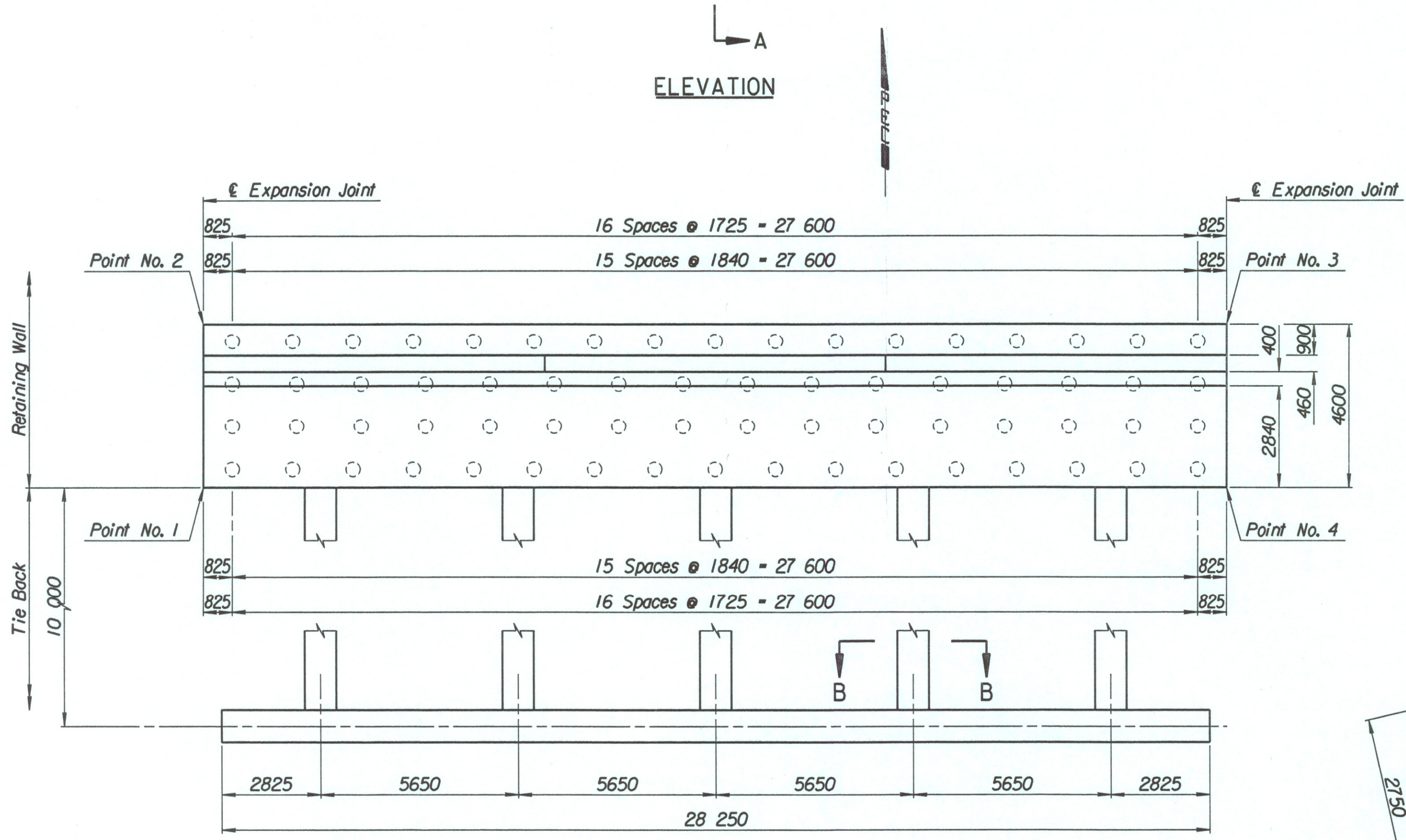
LAYOUT INFORMATION				
Point No.	North Coordinate	East Coordinate	Station	Offset
1	512082.668	493345.235	17+485.767	14.795 Lt.
2	512086.872	493343.369	17+485.767	19.395 Lt.
3	512098.490	493370.231	17+514.661	19.395 Lt.
4	512094.250	493372.017	17+514.661	14.795 Lt.

REINFORCING STEEL					
Straight Bars			Bent Bars		
Mark	Size	Length	Mark	Size	Length
D6-1	*25	294	D6-3	*29	195
D6-2	*25	60	D6-4	*19	195
			D6-5	*29	195
D6-6	*29	195	D6-9	*19	99
D6-7	*13	99			
D6-8	*16	138			
D6-10	*19	99			
D6-11	*13	99			
D6-12	*29	60			

WALL QUANTITIES		
Item	Quantity	Unit
Pressure Grouted Pile (406 mm)	792.0	m
Concrete (Grade 30) (AE)	225.8	m <sup>3</sup>
Reinforcing Steel (Grade 420)	25 191	kg
Class III Excavation	184.9	m <sup>3</sup>



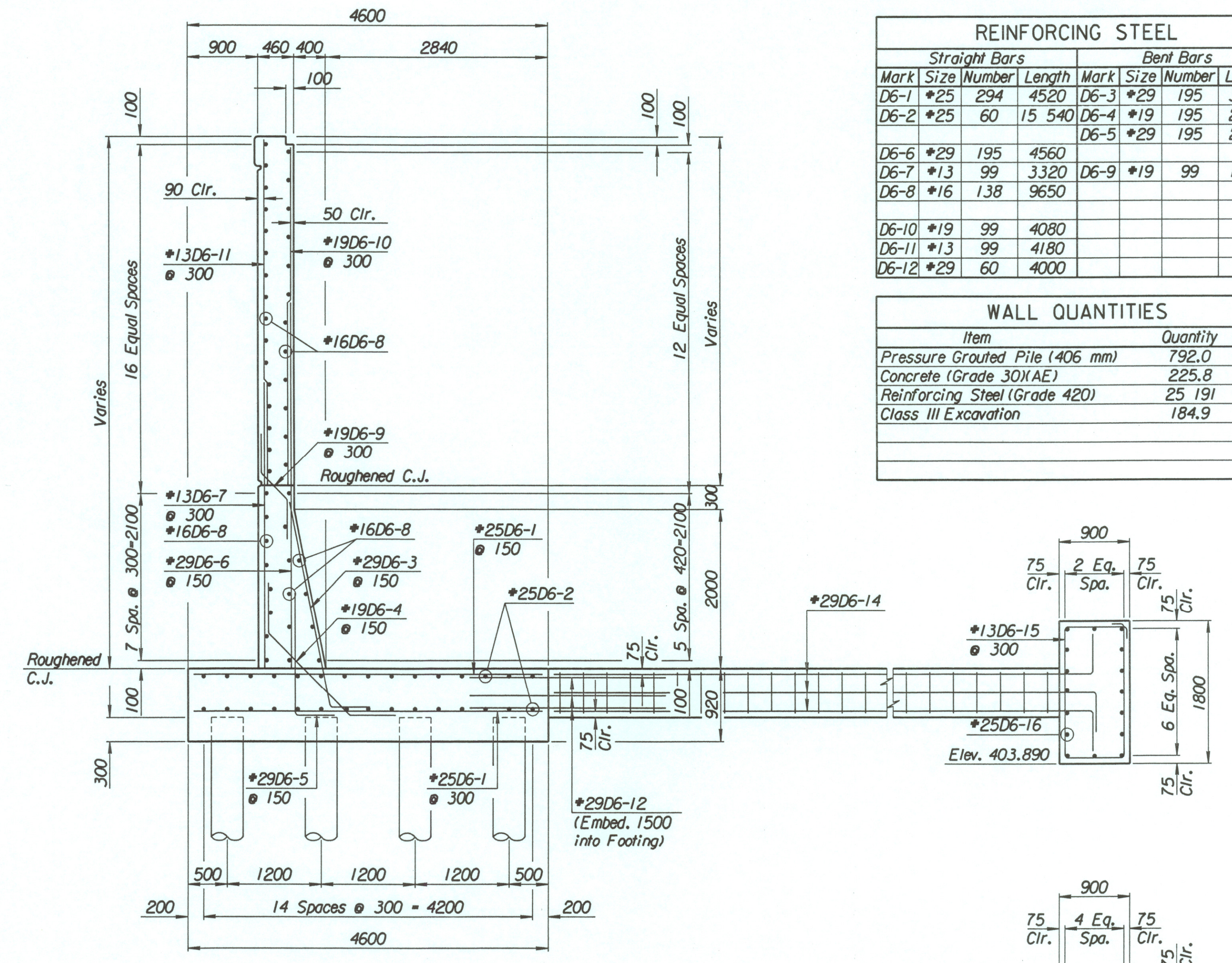
ELEVATION



PLAN

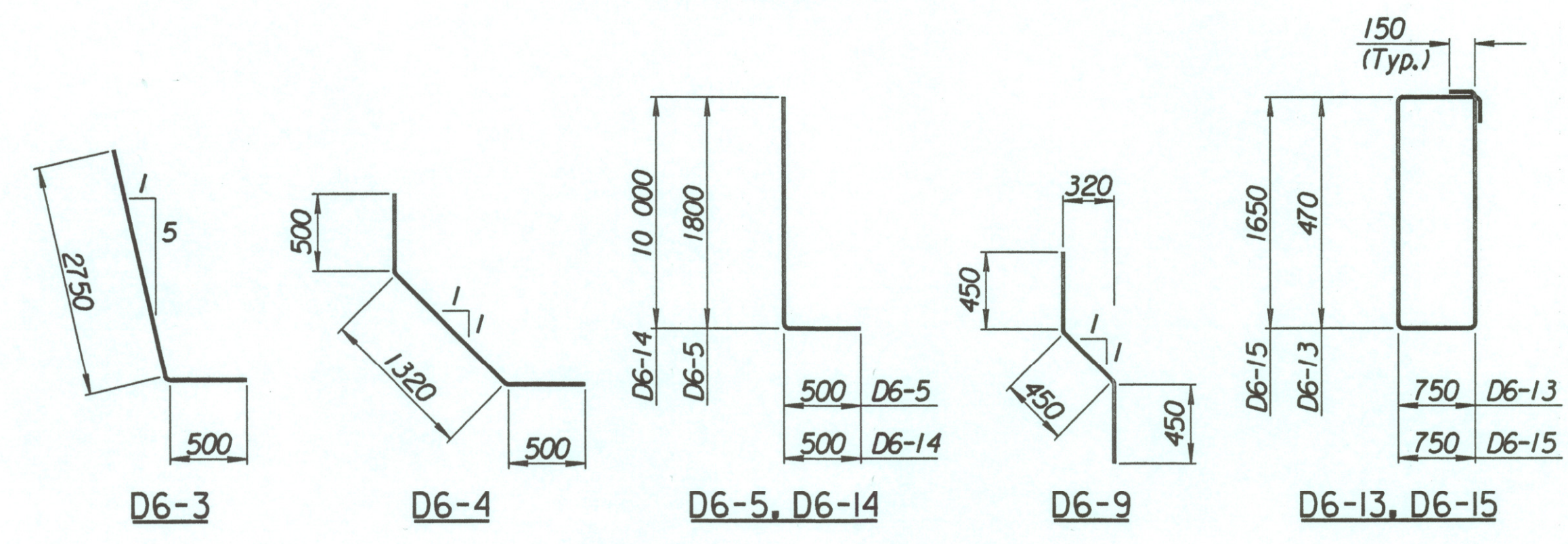
TIE BACK REINFORCING STEEL							
Straight Bars				Bent Bars			
Mark	Size	Number	Length	Mark	Size	Number	Length
D6-16	*25	32	15 040	D6-13	*13	160	2740
				D6-14	*29	60	10 500
				D6-15	*13	94	5100

TIE BACK QUANTITIES		
Item	Quantity	Unit
Concrete (Grade 30) (AE)	72.4	m <sup>3</sup>
Reinforcing Steel (Grade 420)	6012	kg



SECTION A-A

SECTION B-B



BENDING DIAGRAMS  
All dimensions are out to out of bars.

No.		Revisions		By	Date
CITY OF WICHITA					
<b>TYLER NORTHEAST WALL</b>					
STA. 17+485.767 TO STA. 17+514.661					
SEDGWICK COUNTY					
 <b>Professional Engineering Consultants, P.A.</b> 303 S. TOPEKA • WICHITA, KANSAS 67202 316-262-2691 • FAX 316-262-3003					
Designed by	P.D.F.	Checked by	R.A.S.	Date	April, 2002
Drawn by	W.L.L.	Date	April, 2002	Job No.	97362

Drawn by: wll  
 Plotted by: drp  
 i:/1997/97362/001/bridge/tylernd/NEwall-4