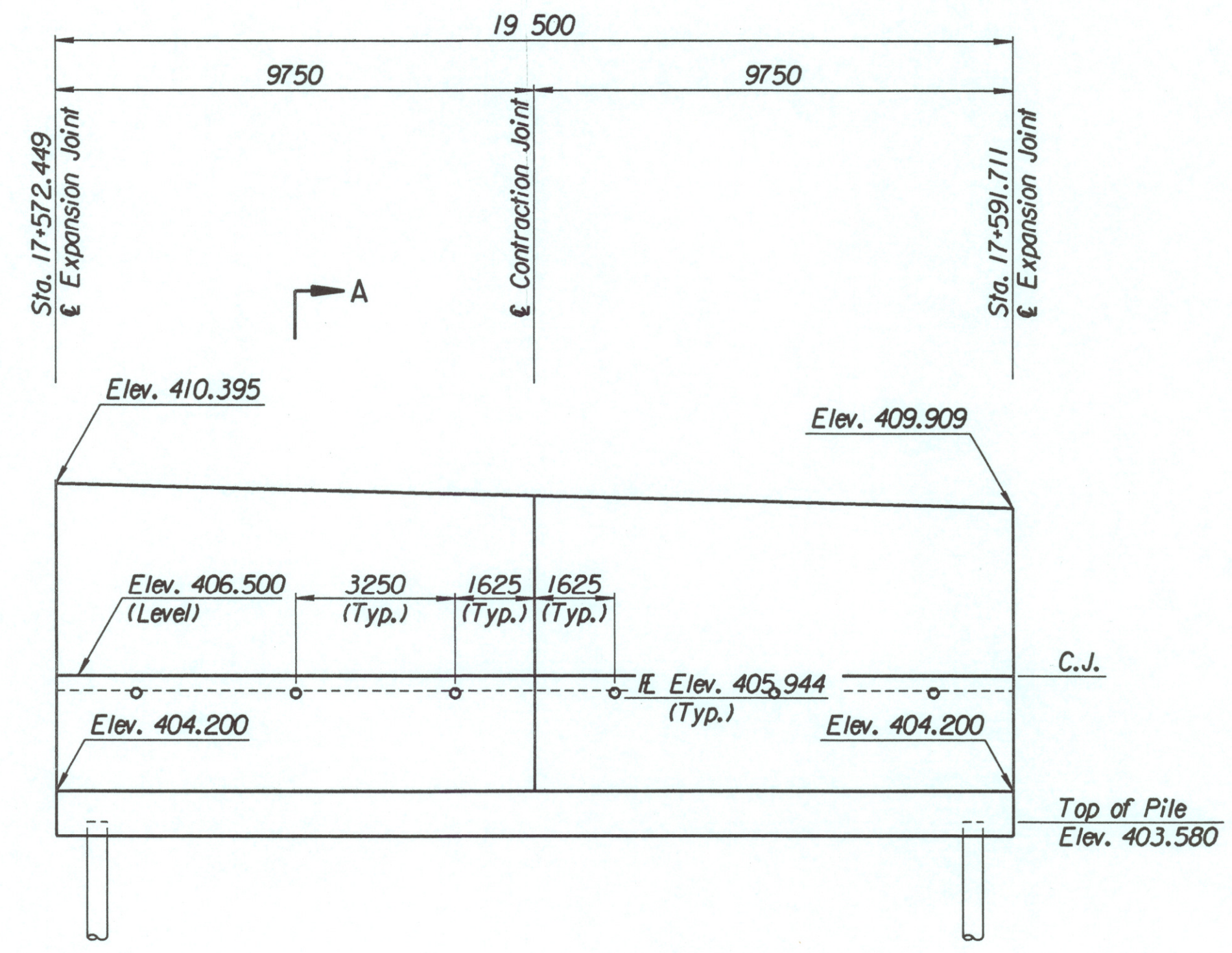


STATE	PROJECT NO.	YEAR	SHEET NO.	TOTAL SHEETS
KANSAS	54-87 K-6657-01	2002	334	1122

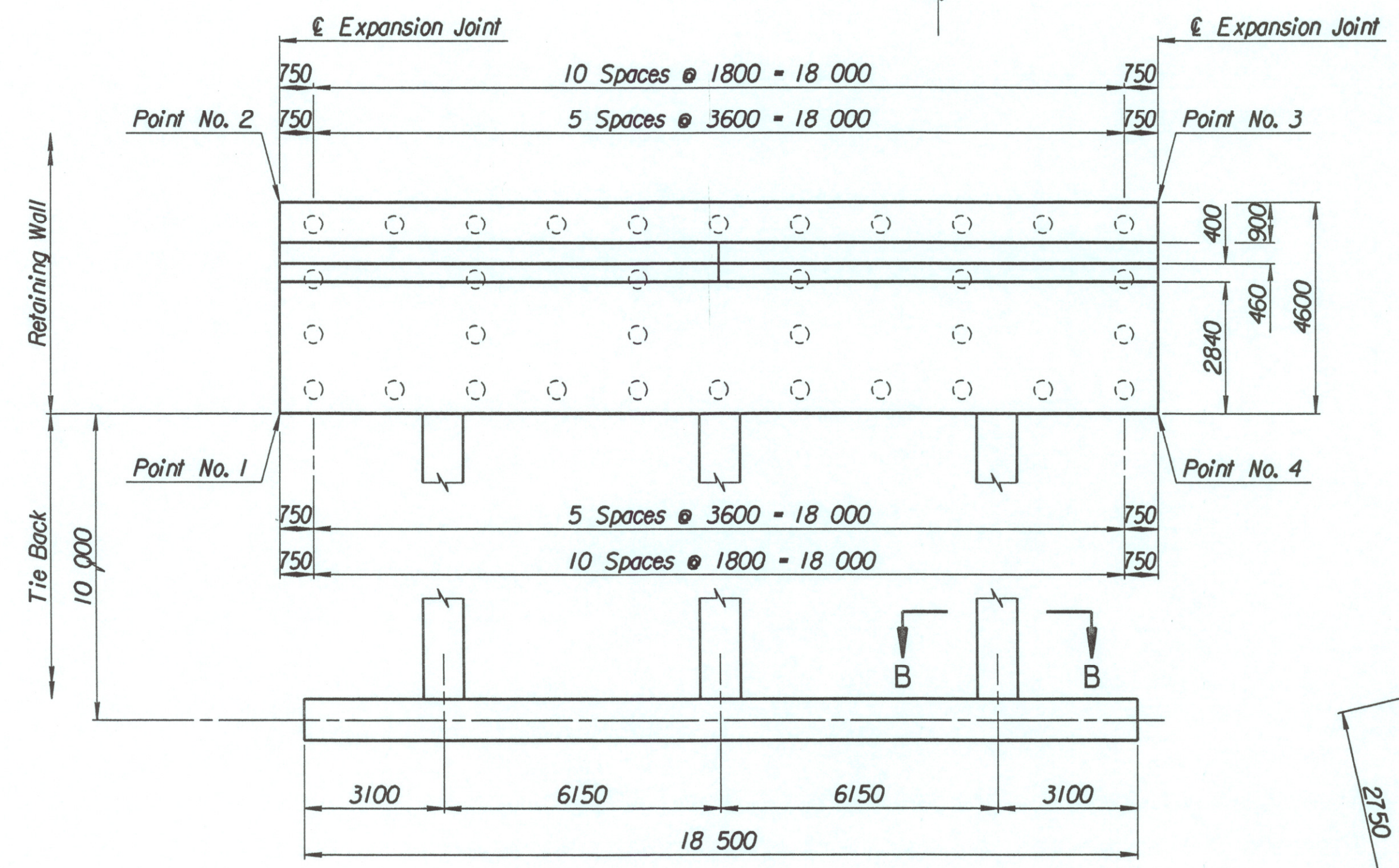
LAYOUT INFORMATION				
Point No.	North Coordinate	East Coordinate	Station	Offset
1	512115.857	493426.223	17+572.449	14.795 Lt.
2	512120.162	493424.603	17+572.449	19.395 Lt.
3	512126.919	493442.907	17+591.711	19.395 Lt.
4	512122.593	493444.472	17+591.711	14.795 Lt.

REINFORCING STEEL							
Straight Bars			Bent Bars				
Mark	Size	Number	Length	Mark	Size	Number	Length
G6-1	*25	164	4520	G6-3	*25	130	3160
G6-2	*25	60	10 670	G6-4	*22	66	2320
				G6-5	*22	130	1660
G6-6	*22	130	3890				
G6-7	*13	66	3400	G6-9	*16	66	1350
G6-8	*16	82	9650				
G6-10	*19	66	3260				
G6-11	*13	66	3360				
G6-12	*29	36	4000				

WALL QUANTITIES		
Item	Quantity	Unit
Pressure Grouted Pile (406 mm)	408.0	m
Concrete (Grade 30(AE))	143.5	m ³
Reinforcing Steel (Grade 420)	12 801	kg
Class III Excavation	186.1	m ³



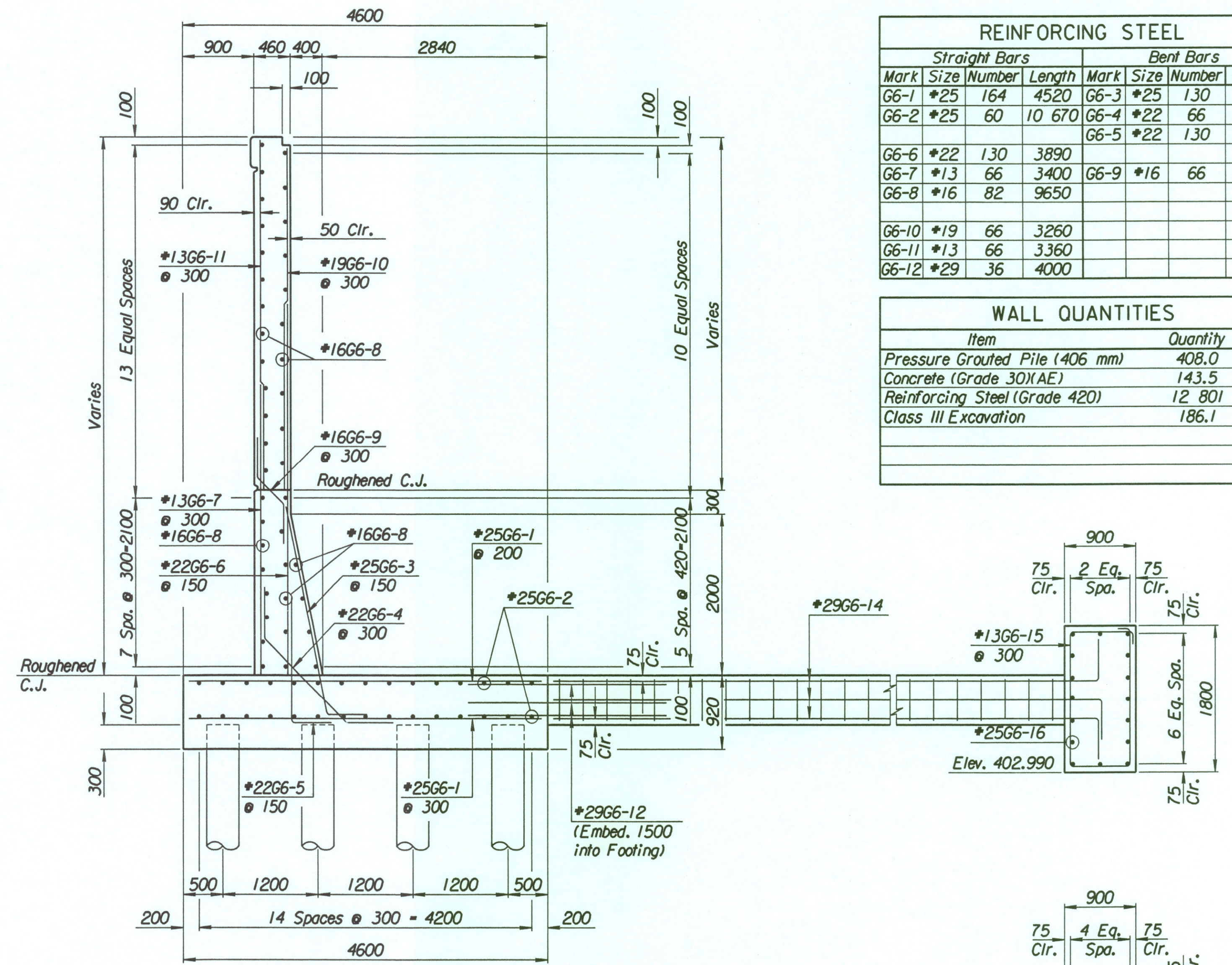
ELEVATION



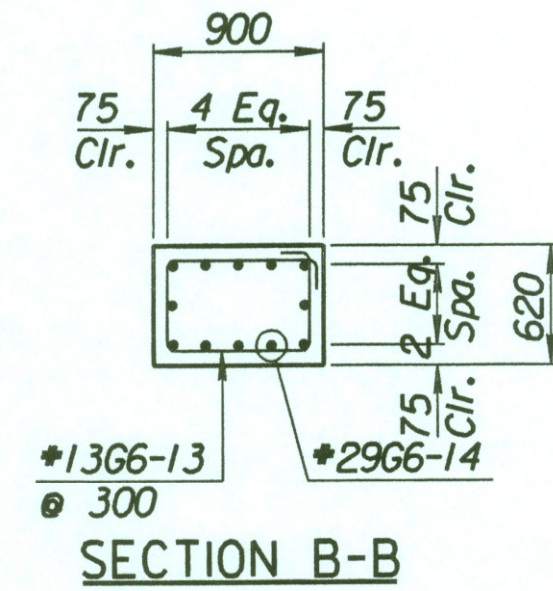
PLAN

TIE BACK REINFORCING STEEL							
Straight Bars				Bent Bars			
Mark	Size	Number	Length	Mark	Size	Number	Length
G6-16	*25	32	10 170	G6-13	*13	96	2740
				G6-14	*29	36	10 500
				G6-15	*13	63	5100

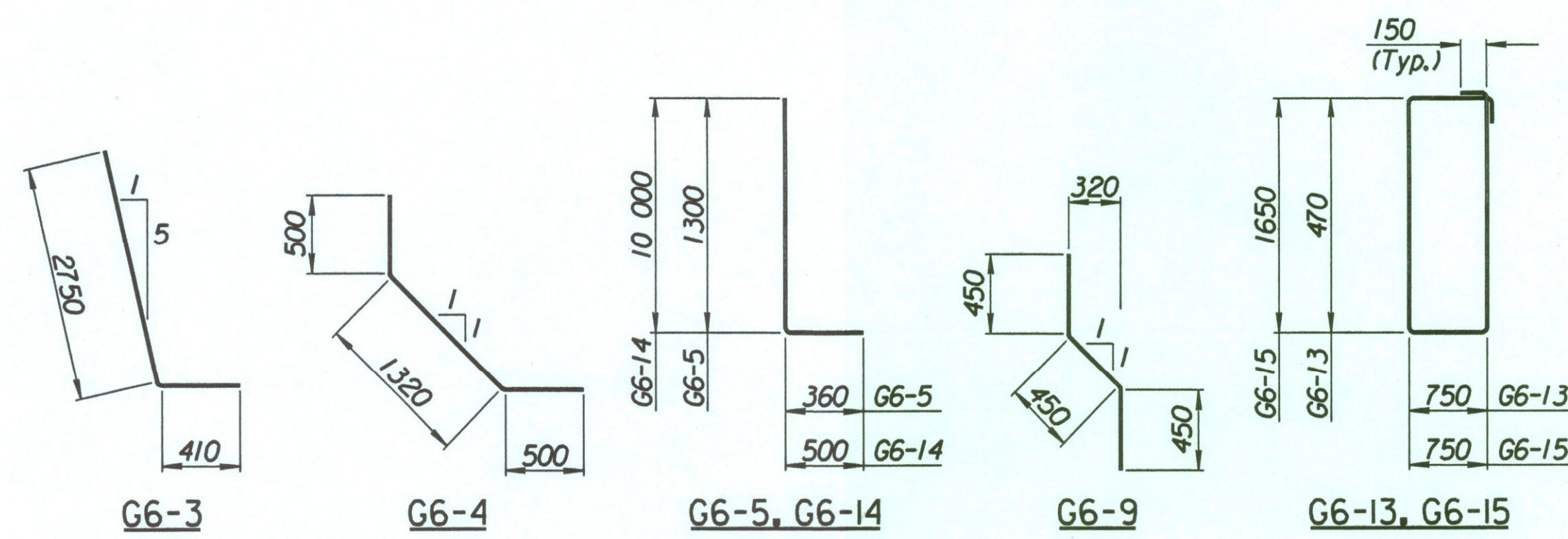
TIE BACK QUANTITIES		
Item	Quantity	Unit
Concrete (Grade 30(AE))	46.0	m ³
Reinforcing Steel (Grade 420)	3786	kg



SECTION A-A



SECTION B-B



BENDING DIAGRAMS
All dimensions are out to out of bars.

No.	Revisions	By	Date
CITY OF WICHITA			
TYLER NORTHEAST WALL			
STA. 17+572.449 TO STA. 17+591.711			
SEDGWICK COUNTY			
 Professional Engineering Consultants, P.A. <small>303 S. TOPEKA • WICHITA, KANSAS 67202 316-262-2691 • FAX 316-262-3003</small>			
Designed by	P.D.F.	Checked by	R.A.S.
Drawn by	W.L.L.	Date	Apr 11, 2002 Job No. 97362

Drawn by: wll
 Plotted by: drp 4-11-2002
 i:/1997/97362/001/bridge/tylerrd/NE.wall-7