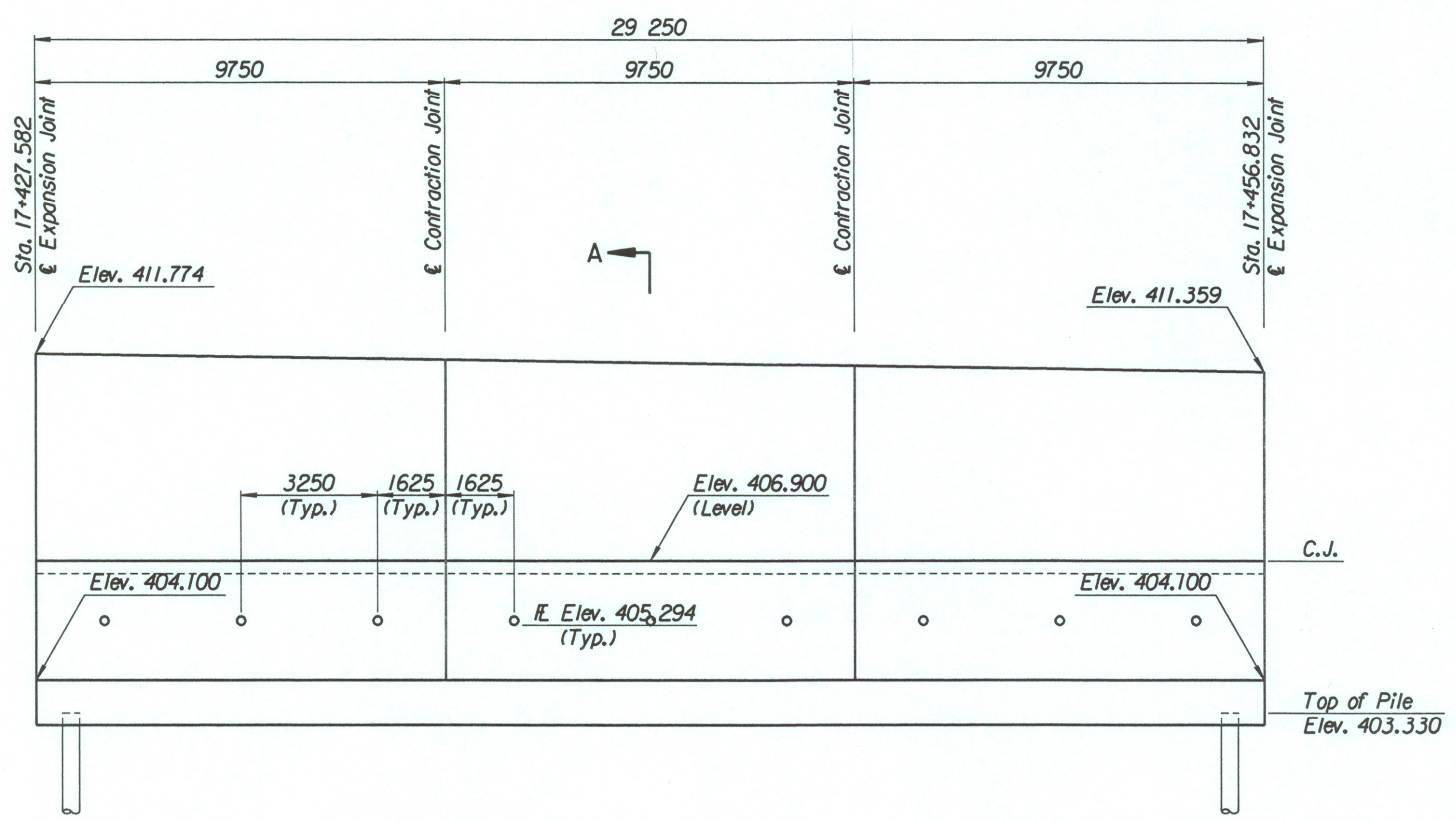


STATE	PROJECT NO.	YEAR	SHEET NO.	TOTAL SHEETS
KANSAS	54-87 K-6657-01	2002	341	1122

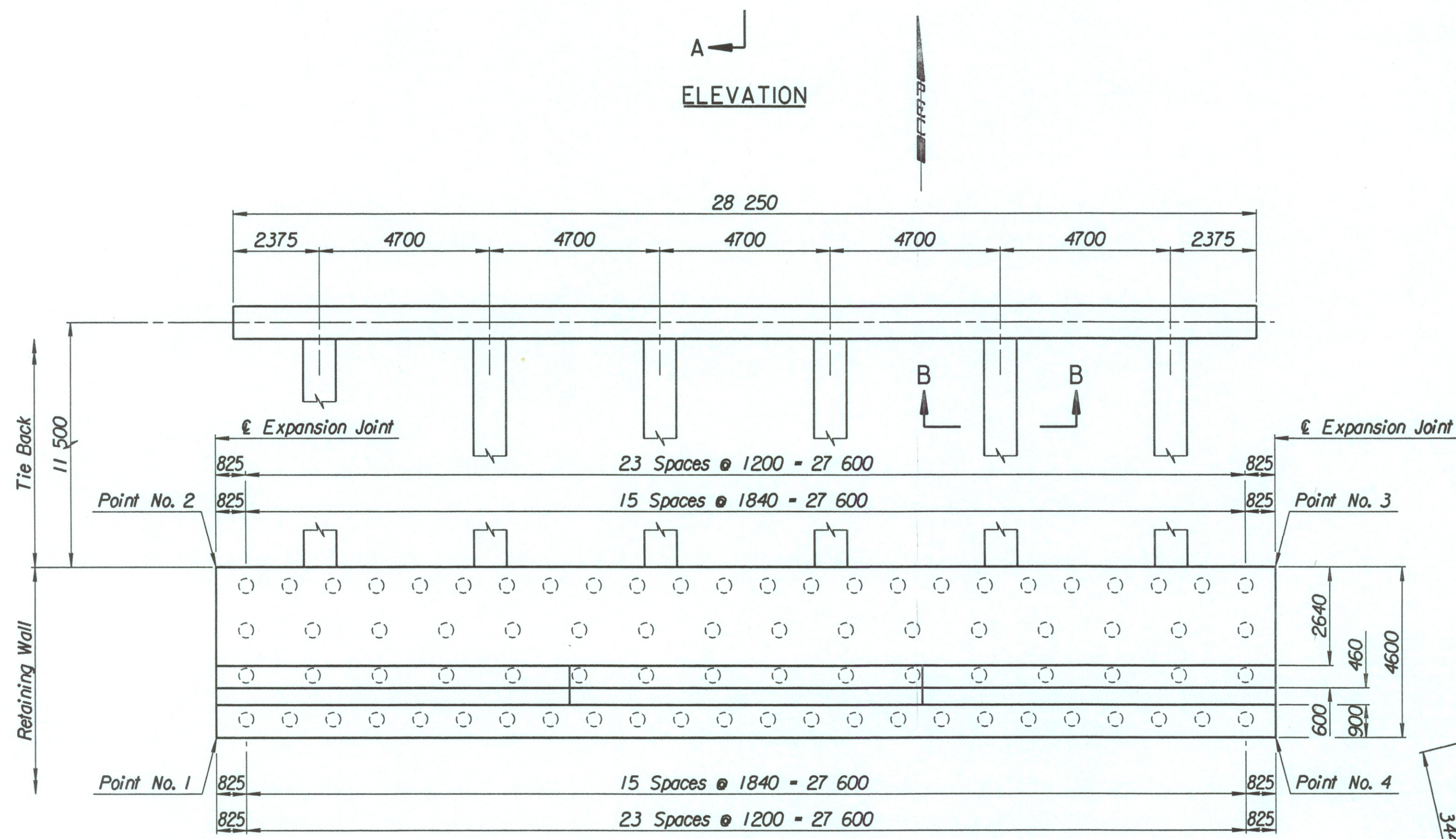
LAYOUT INFORMATION				
Point No.	North Coordinate	East Coordinate	Station	Offset
1	512027.242	493306.549	17+427.582	19.395 Rt.
2	512031.414	493304.611	17+427.582	14.795 Rt.
3	512043.735	493331.139	17+456.832	14.795 Rt.
4	512039.563	493333.077	17+456.832	19.395 Rt.

REINFORCING STEEL							
Straight Bars			Bent Bars				
Mark	Size	Number	Length	Mark	Size	Number	Length
B7-1	*25	342	4520	B7-3	*29	195	3940
B7-2	*25	60	15 540	B7-4	*19	195	2620
				B7-5	*29	195	2500
B7-6	*29	195	5060				
B7-7	*13	99	3830	B7-9	*19	99	1350
B7-8	*16	150	9650				
B7-10	*19	99	4310				
B7-11	*13	99	4410				
B7-12	*29	72	4000				

WALL QUANTITIES		
Item	Quantity	Unit
Pressure Grouted Pile (406 mm)	960.0	m
Concrete (Grade 30/AE)	266.1	m <sup>3</sup>
Reinforcing Steel (Grade 420)	28 102	kg
Class III Excavation	393.8	m <sup>3</sup>



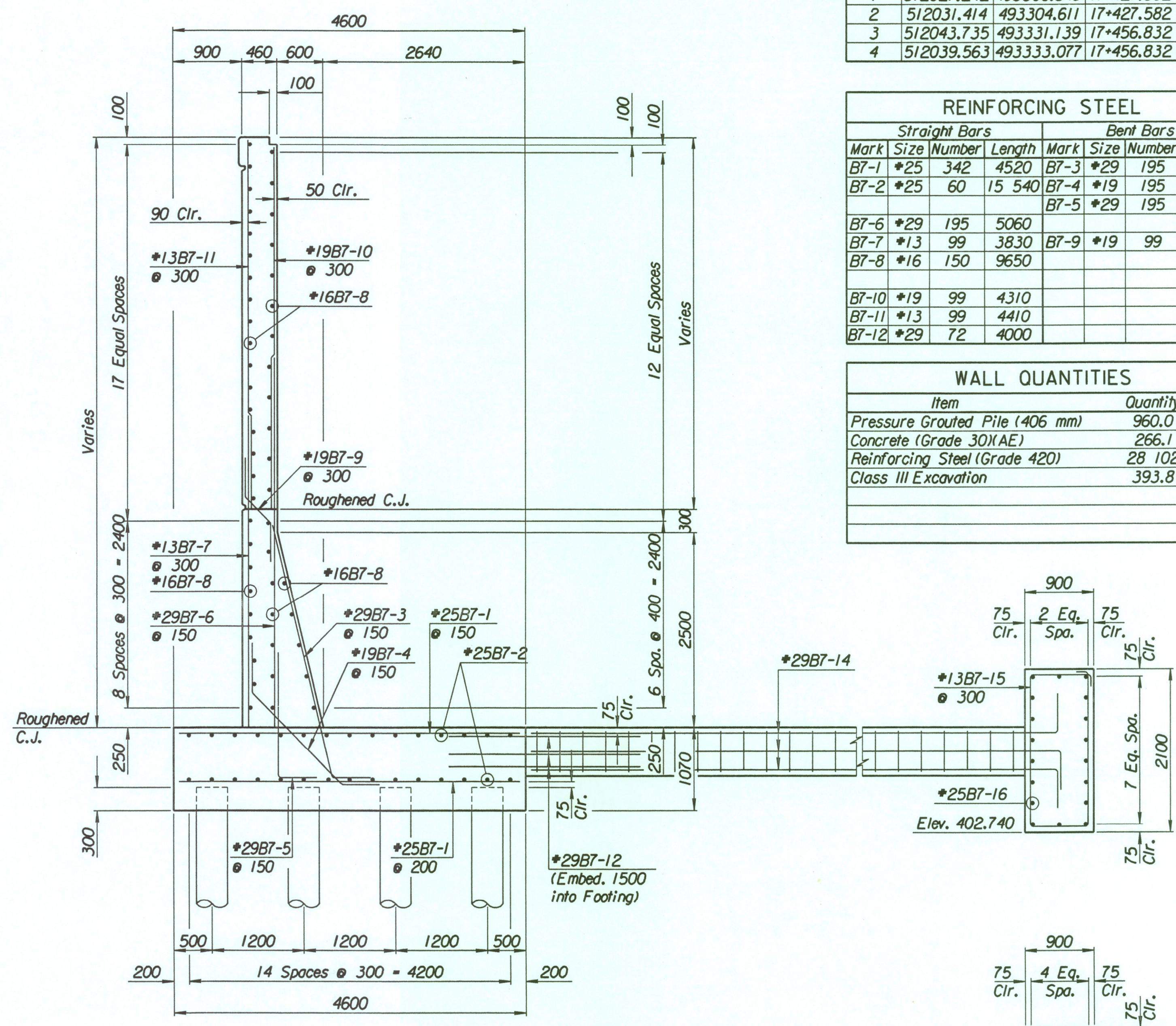
ELEVATION



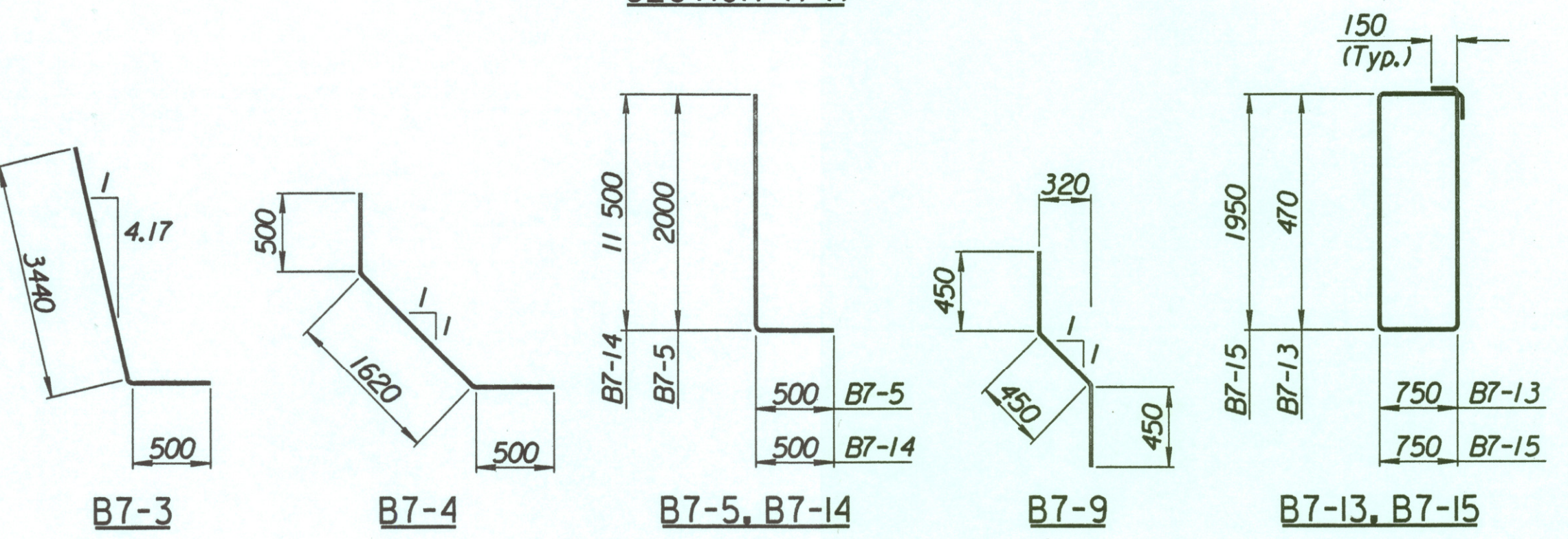
PLAN

TIE BACK REINFORCING STEEL							
Straight Bars			Bent Bars				
Mark	Size	Number	Length	Mark	Size	Number	Length
B7-16	*25	36	15 040	B7-13	*13	222	2740
				B7-14	*29	72	12 000
				B7-15	*13	94	5700

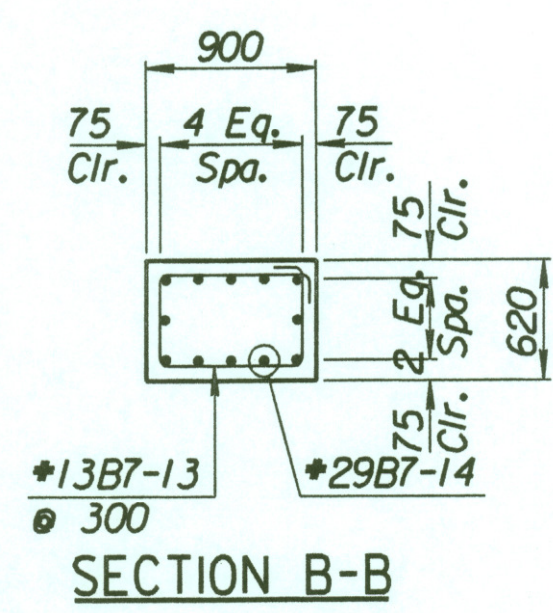
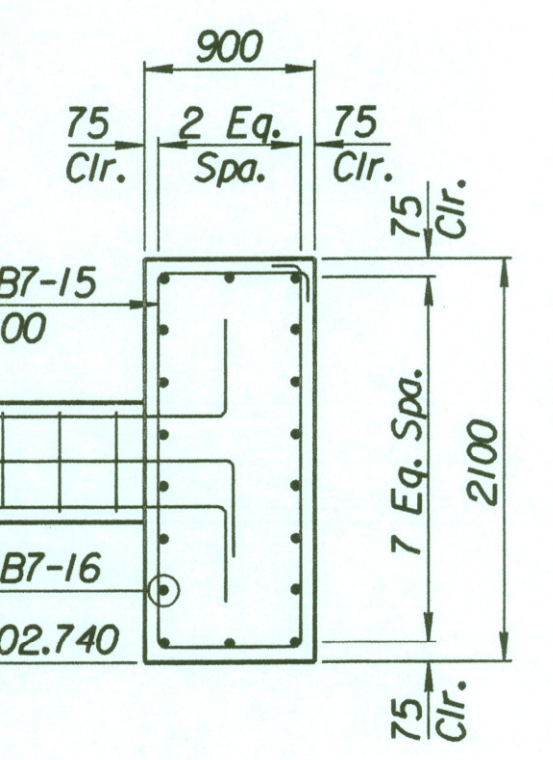
TIE BACK QUANTITIES		
Item	Quantity	Unit
Concrete (Grade 30/AE)	90.4	m <sup>3</sup>
Reinforcing Steel (Grade 420)	7660	kg



SECTION A-A



BENDING DIAGRAMS  
All dimensions are out to out of bars.



SECTION B-B

No.	Revisions	By	Date

CITY OF WICHITA  
**TYLER SOUTHEAST WALL**  
STA. 17+427.582 TO STA. 17+456.832  
SEDGWICK COUNTY

Professional Engineering Consultants, P.A.  
303 S. TOPEKA • WICHITA, KANSAS 67202  
316-262-2691 • FAX 316-262-3003  
Designed by P.D.F. Checked by R.A.S.  
Drawn by W.L.L. Date April, 2002 Job No. 97362

Drawn by: wll  
Plotted by: drp 3-22-2002  
\\1997\97362\001\bridge\tylerrrd\SEWall-2