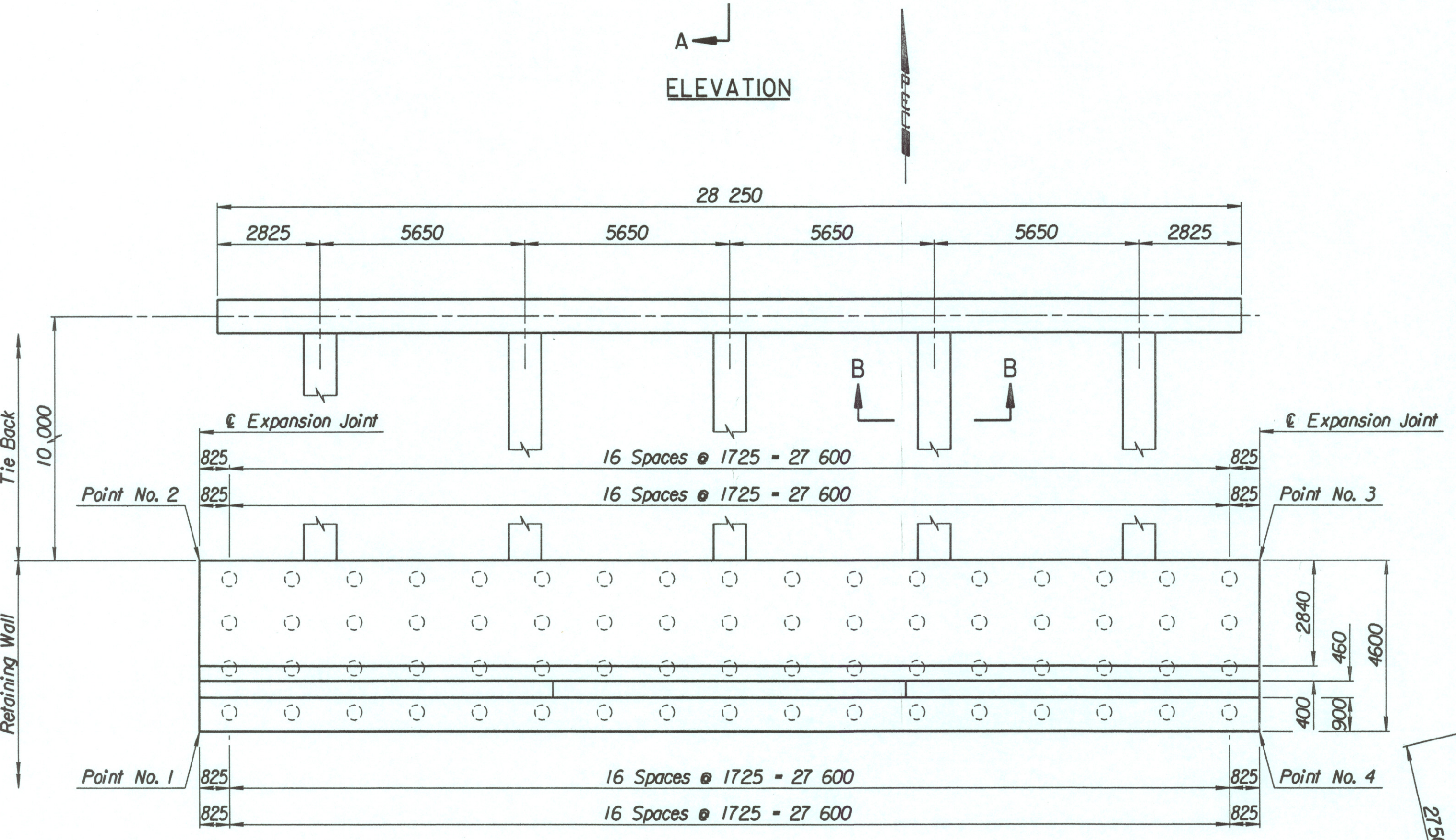
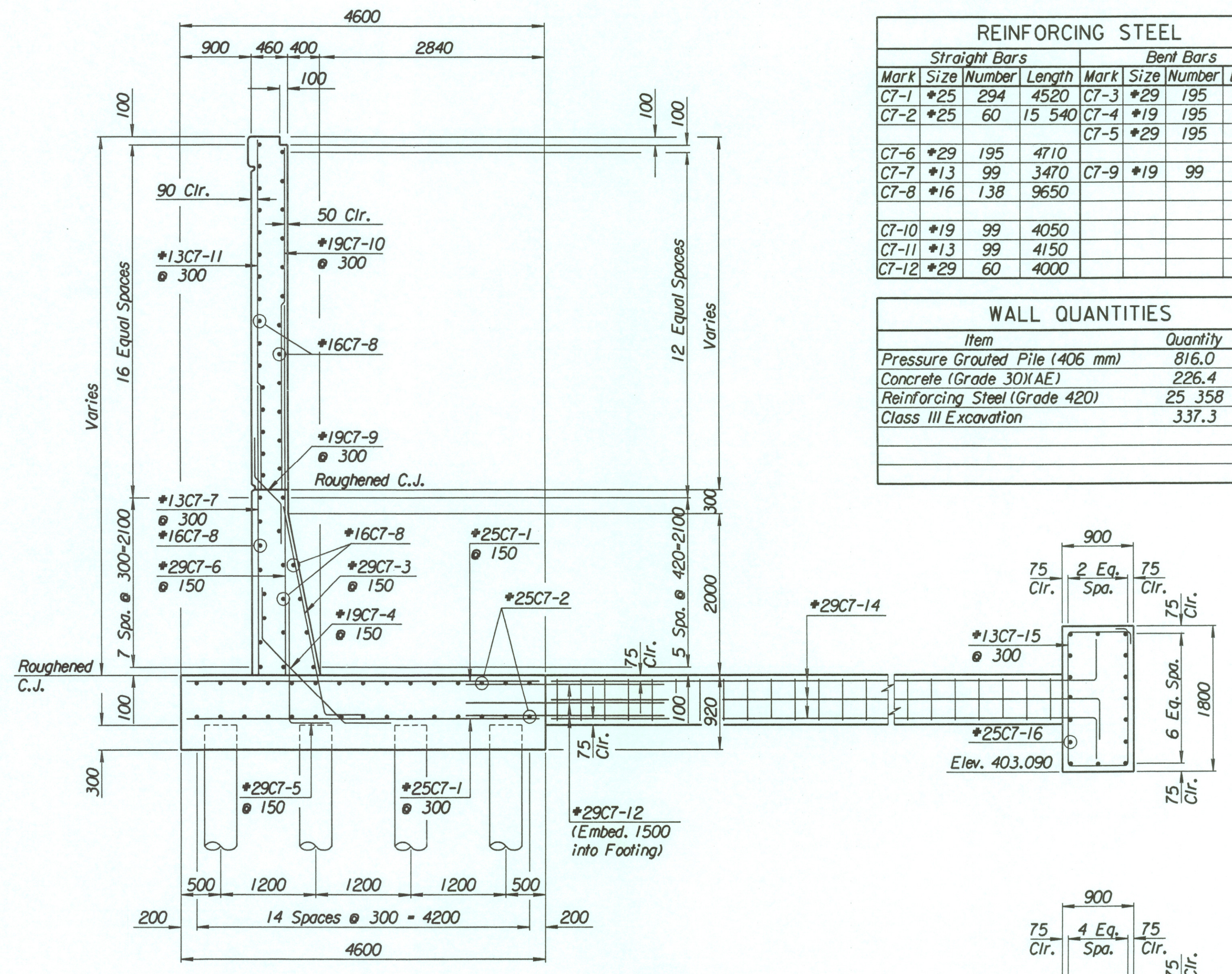
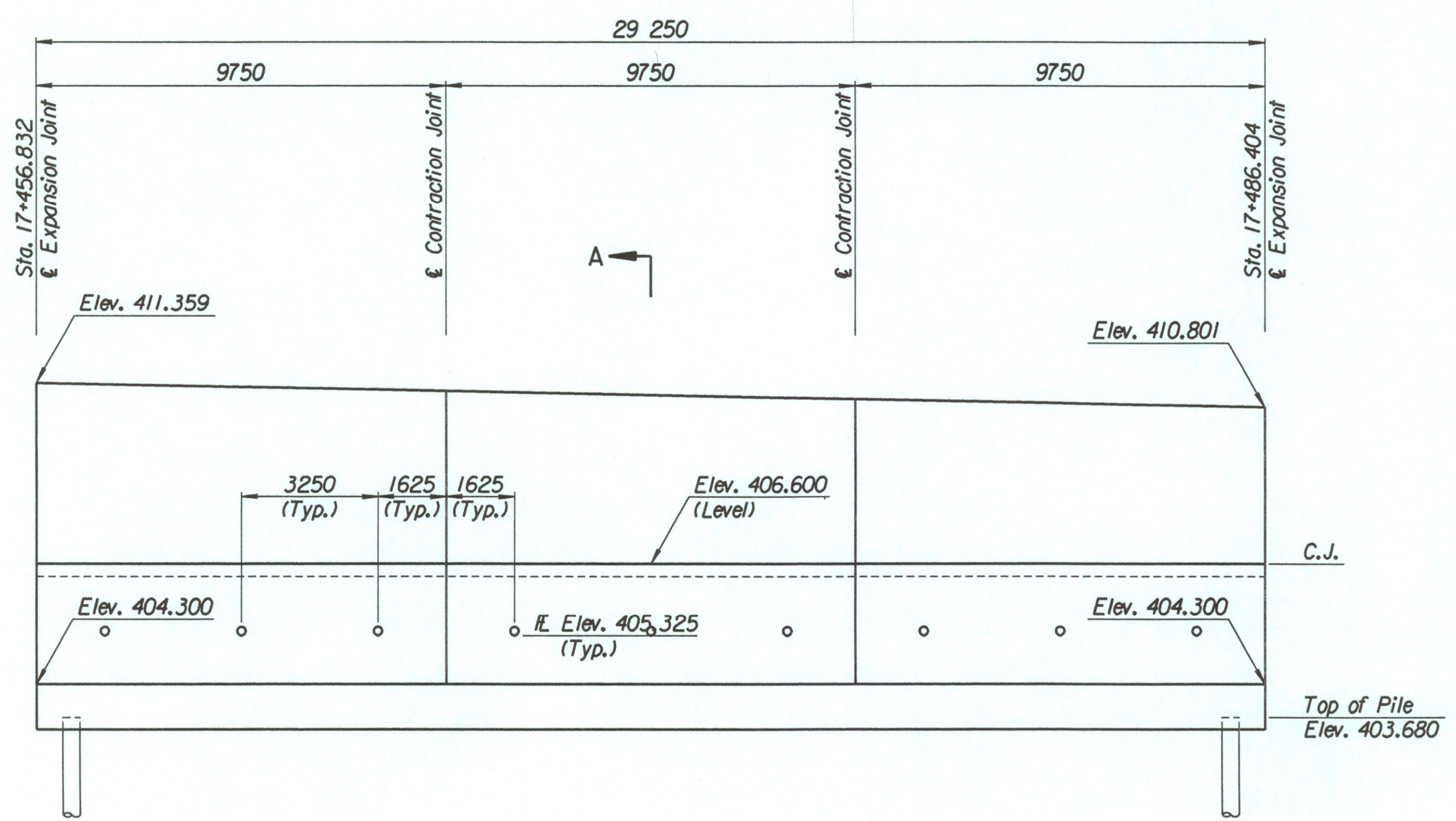


LAYOUT INFORMATION				
Point No.	North Coordinate	East Coordinate	Station	Offset
1	512039.563	493333.077	17+456.832	19.395 Rt.
2	512043.735	493331.139	17.456.832	14.795 Rt.
3	512055.879	493357.819	17+486.404	14.795 Rt.
4	512051.674	493359.684	17+486.404	19.395 Rt.

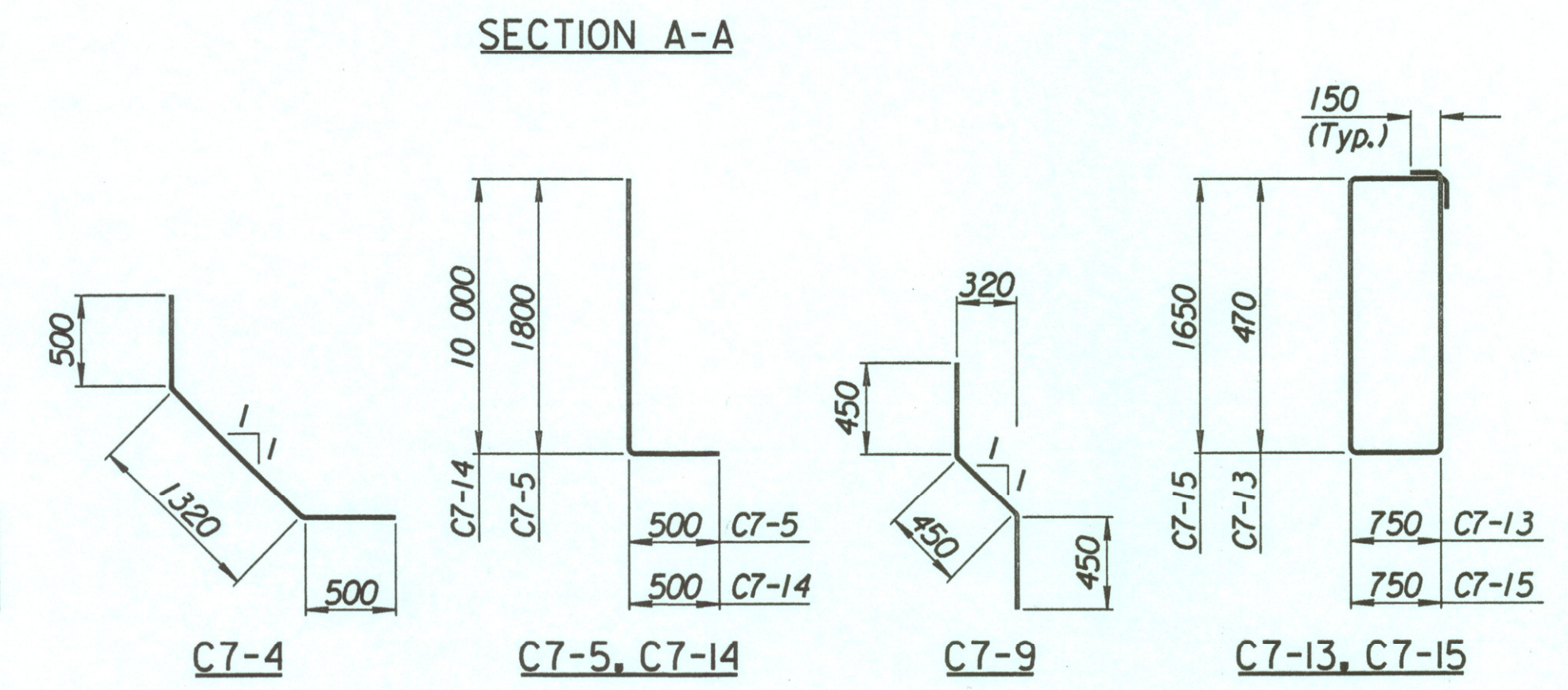
REINFORCING STEEL							
Straight Bars			Bent Bars				
Mark	Size	Number	Length	Mark	Size	Number	Length
C7-1	*25	294	4520	C7-3	*29	195	3250
C7-2	*25	60	15 540	C7-4	*19	195	2320
				C7-5	*29	195	2300
C7-6	*29	195	4710				
C7-7	*13	99	3470	C7-9	*19	99	1350
C7-8	*16	138	9650				
C7-10	*19	99	4050				
C7-11	*13	99	4150				
C7-12	*29	60	4000				

WALL QUANTITIES		
Item	Quantity	Unit
Pressure Grouted Pile (406 mm)	816.0	m
Concrete (Grade 30)(AE)	226.4	m ³
Reinforcing Steel (Grade 420)	25 358	kg
Class III Excavation	337.3	m ³

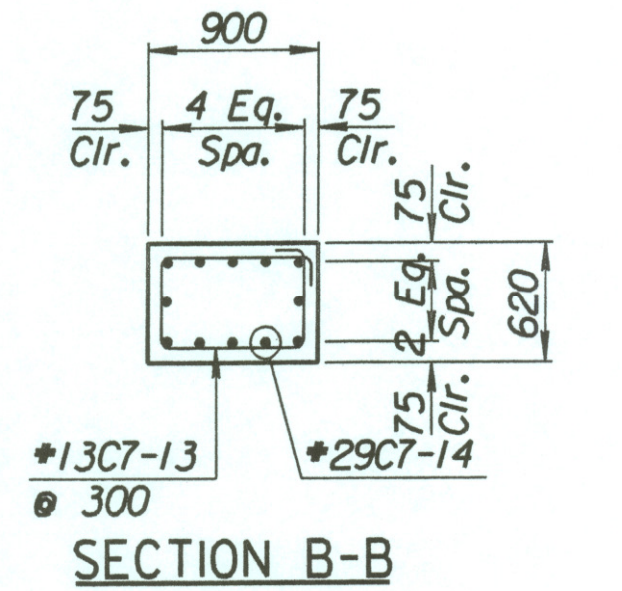


TIE BACK REINFORCING STEEL							
Straight Bars				Bent Bars			
Mark	Size	Number	Length	Mark	Size	Number	Length
C7-16	*25	32	15 040	C7-13	*13	160	2740
				C7-14	*29	60	10 500
				C7-15	*13	94	5100

TIE BACK QUANTITIES		
Item	Quantity	Unit
Concrete (Grade 30)(AE)	72.4	m ³
Reinforcing Steel (Grade 420)	6012	kg



BENDING DIAGRAMS
All dimensions are out to out of bars.



No.	Revisions	By	Date

CITY OF WICHITA

TYLER SOUTHEAST WALL

STA. 17+456.832 TO STA. 17+486.404
SEDGWICK COUNTY

Professional Engineering Consultants, P.A.
303 S. TOPEKA • WICHITA, KANSAS 67202
316-262-2691 • FAX 316-262-3003

Designed by: P.D.F. Checked by: R.A.S.
Drawn by: W.L.L. Date: April, 2002 Job No. 97362

Drawn by: wll
 Plotted by: drp 3-22-2002
 I:\1997\97362\001\bridge\tylerd\SEWall-3