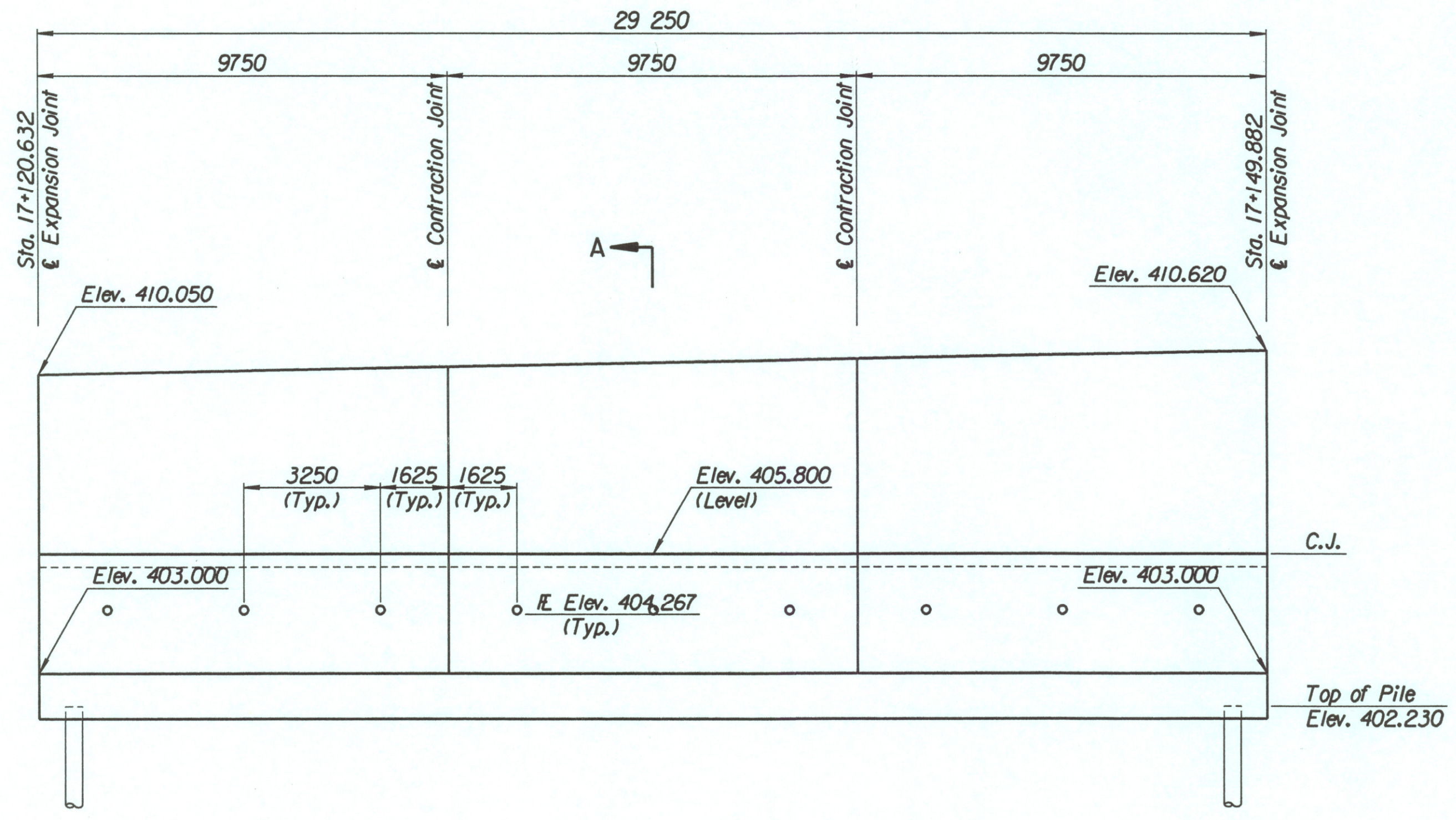


STATE	PROJECT NO.	YEAR	SHEET NO.	TOTAL SHEETS
KANSAS	54-87 K-6657-01	2002	355	1122

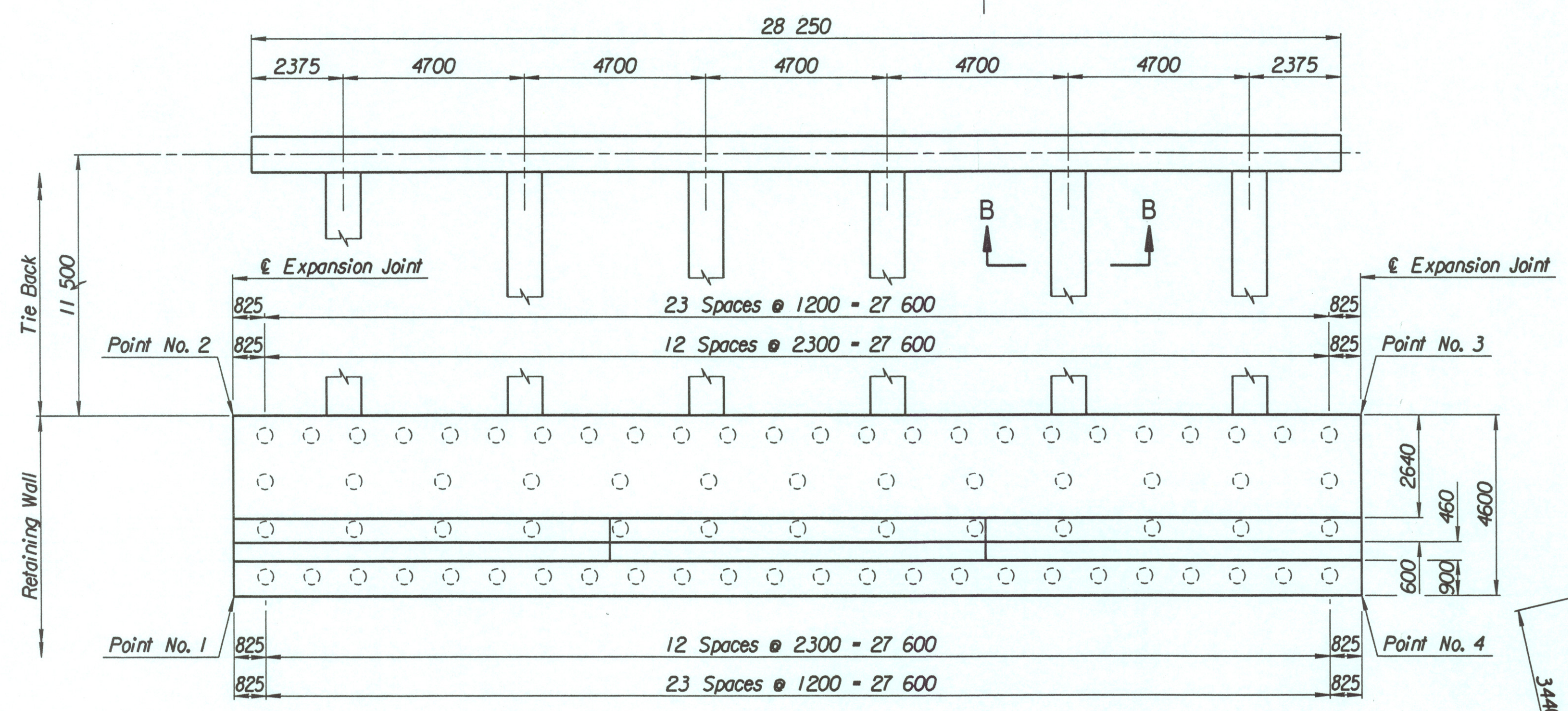
LAYOUT INFORMATION				
Point No.	North Coordinate	East Coordinate	Station	Offset
1	511897.937	493028.163	17+120.632	19.395 Rt.
2	511902.109	493026.225	17+120.632	14.795 Rt.
3	511914.431	493052.753	17+149.882	14.795 Rt.
4	511910.259	493054.691	17+149.882	19.395 Rt.

REINFORCING STEEL							
Straight Bars			Bent Bars				
Mark	Size	Number	Length	Mark	Size	Number	Length
E8-1	*25	342	4520	E8-3	*29	195	3940
E8-2	*25	60	15 540	E8-4	*19	195	2620
				E8-5	*29	195	2500
E8-6	*29	195	5220				
E8-7	*13	99	3980	E8-9	*19	99	1350
E8-8	*16	150	9650				
E8-10	*19	99	4100				
E8-11	*13	99	4200				
E8-12	*29	72	4000				

WALL QUANTITIES		
Item	Quantity	Unit
Pressure Grouted Pile (406 mm)	888.0	m
Concrete (Grade 30/AE)	264.3	m ³
Reinforcing Steel (Grade 420)	28 207	kg
Class III Excavation	327.6	m ³



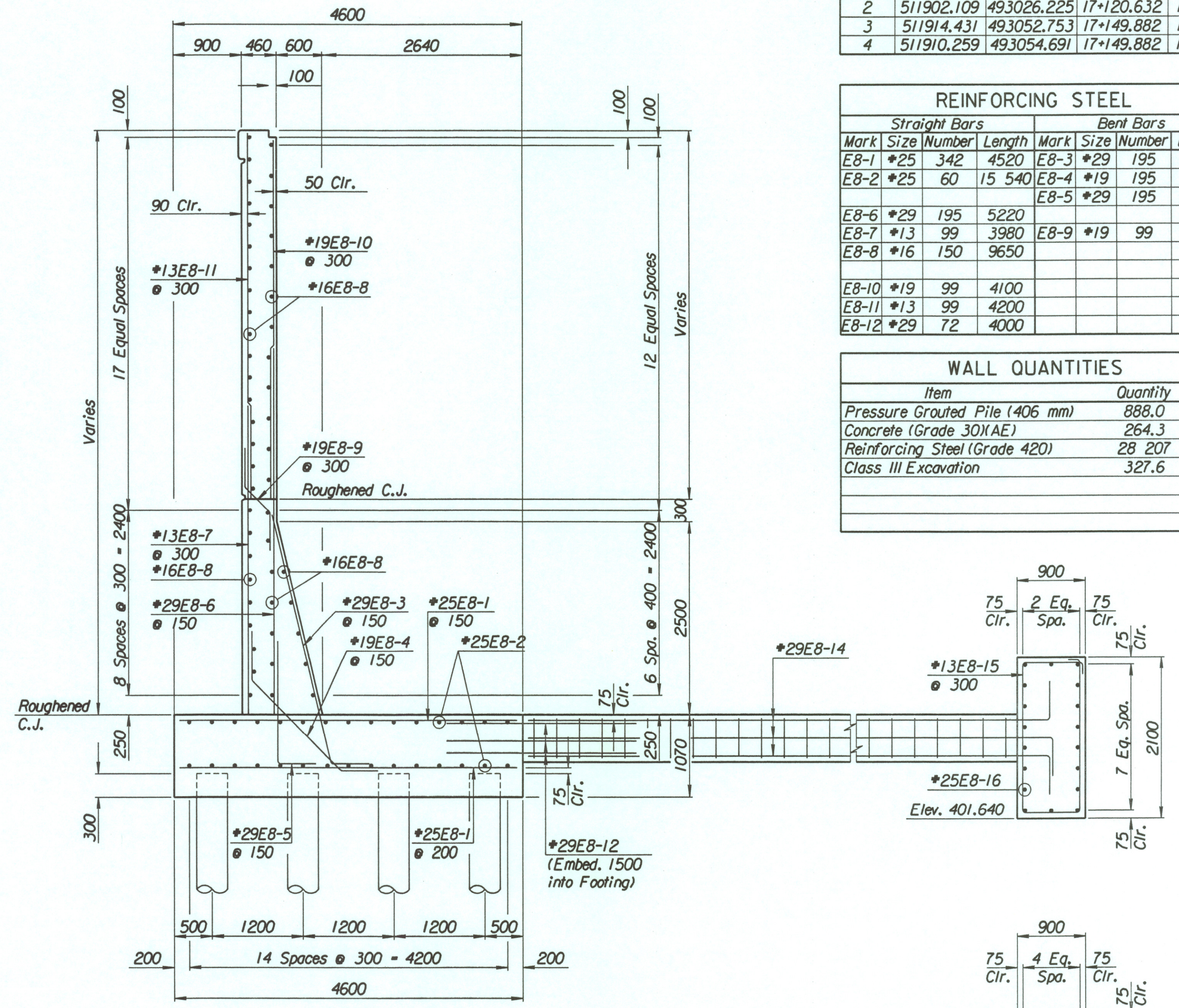
ELEVATION



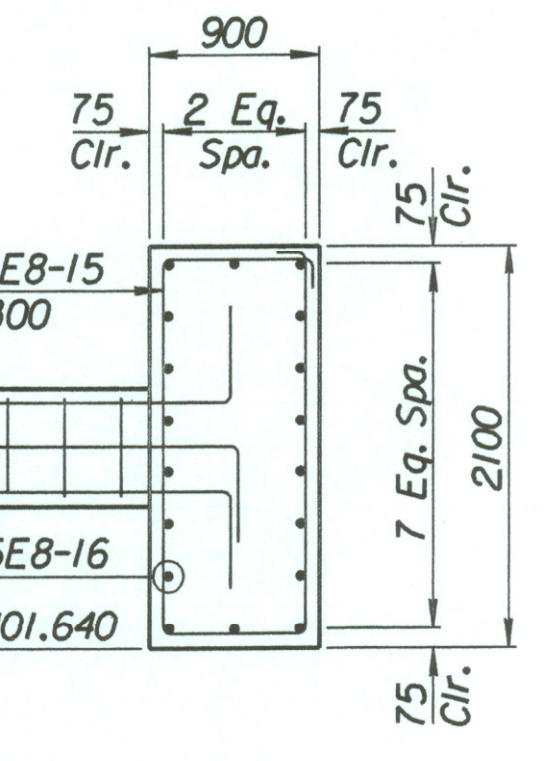
PLAN

TIE BACK REINFORCING STEEL							
Straight Bars				Bent Bars			
Mark	Size	Number	Length	Mark	Size	Number	Length
E8-16	*25	36	15 040	E8-13	*13	222	2740
				E8-14	*29	72	12 000
				E8-15	*13	94	5700

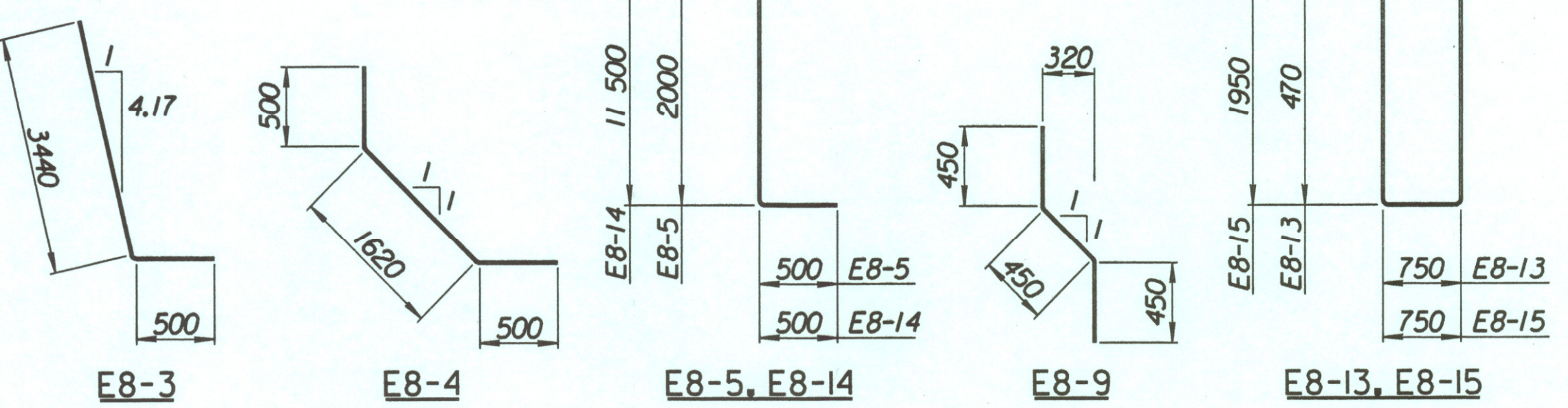
TIE BACK QUANTITIES		
Item	Quantity	Unit
Concrete (Grade 30/AE)	90.4	m ³
Reinforcing Steel (Grade 420)	7660	kg
Class III Excavation	m ³



SECTION A-A



SECTION B-B



Drawn by: wil
 Plotted by: drp 3-25-2002
 s:/1997/191362/001/bridge/hylerrd/SWwall-5

No.	Revisions	By	Date

CITY OF WICHITA

TYLER SOUTHWEST WALL

STA. 17+120.632 TO STA. 17+149.882
SEDGWICK COUNTY

Professional Engineering Consultants, P.A.
 303 S. TOPEKA • WICHITA, KANSAS 67202
 316-262-2601 • FAX 316-262-3003

Designed by	P.D.F.	Checked by	R.A.S.
Drawn by	W.L.L.	Date	April, 2002
		Job No.	97362