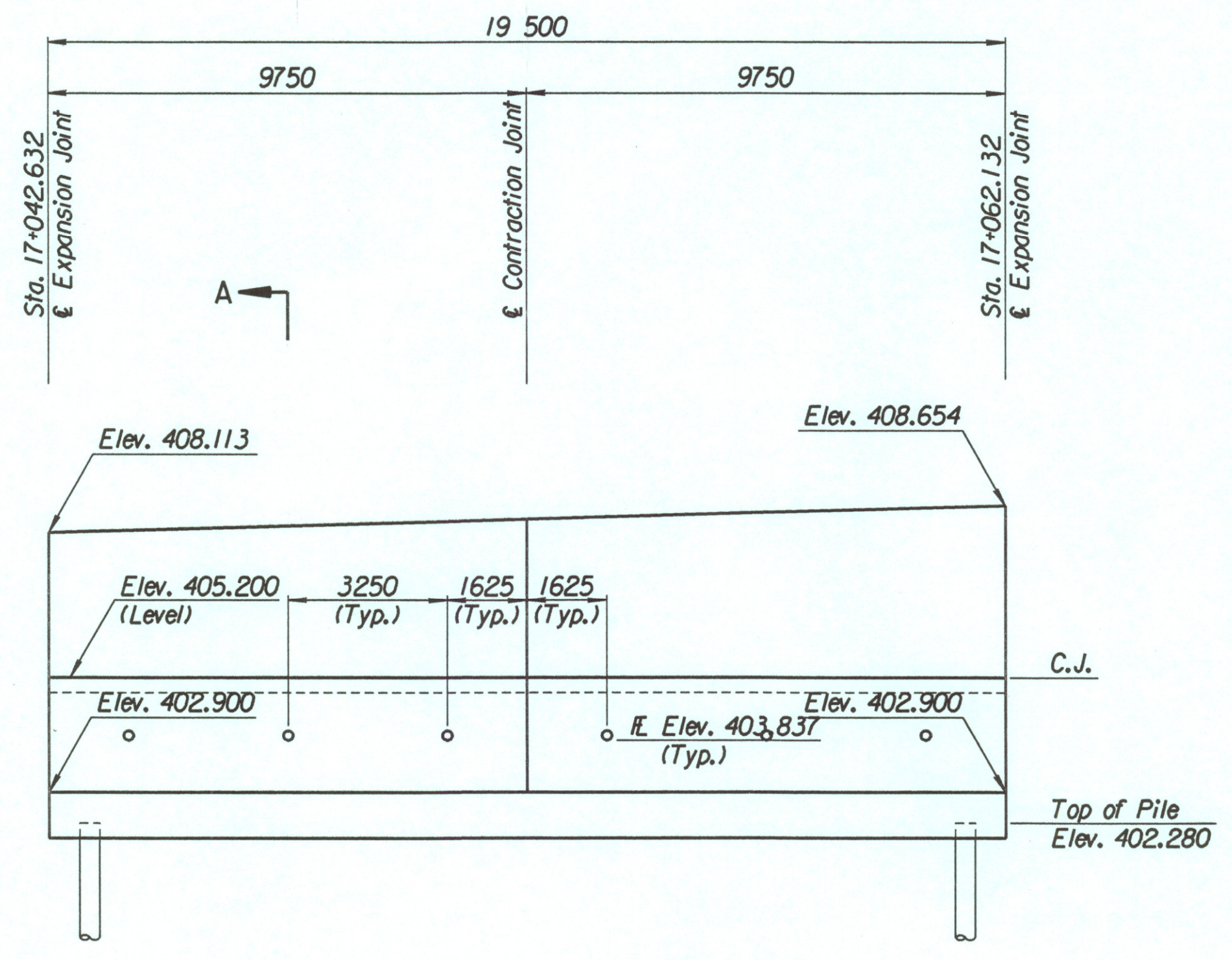


STATE	PROJECT NO.	YEAR	SHEET NO.	TOTAL SHEETS
KANSAS	54-87 K-6657-01	2002	358	1122

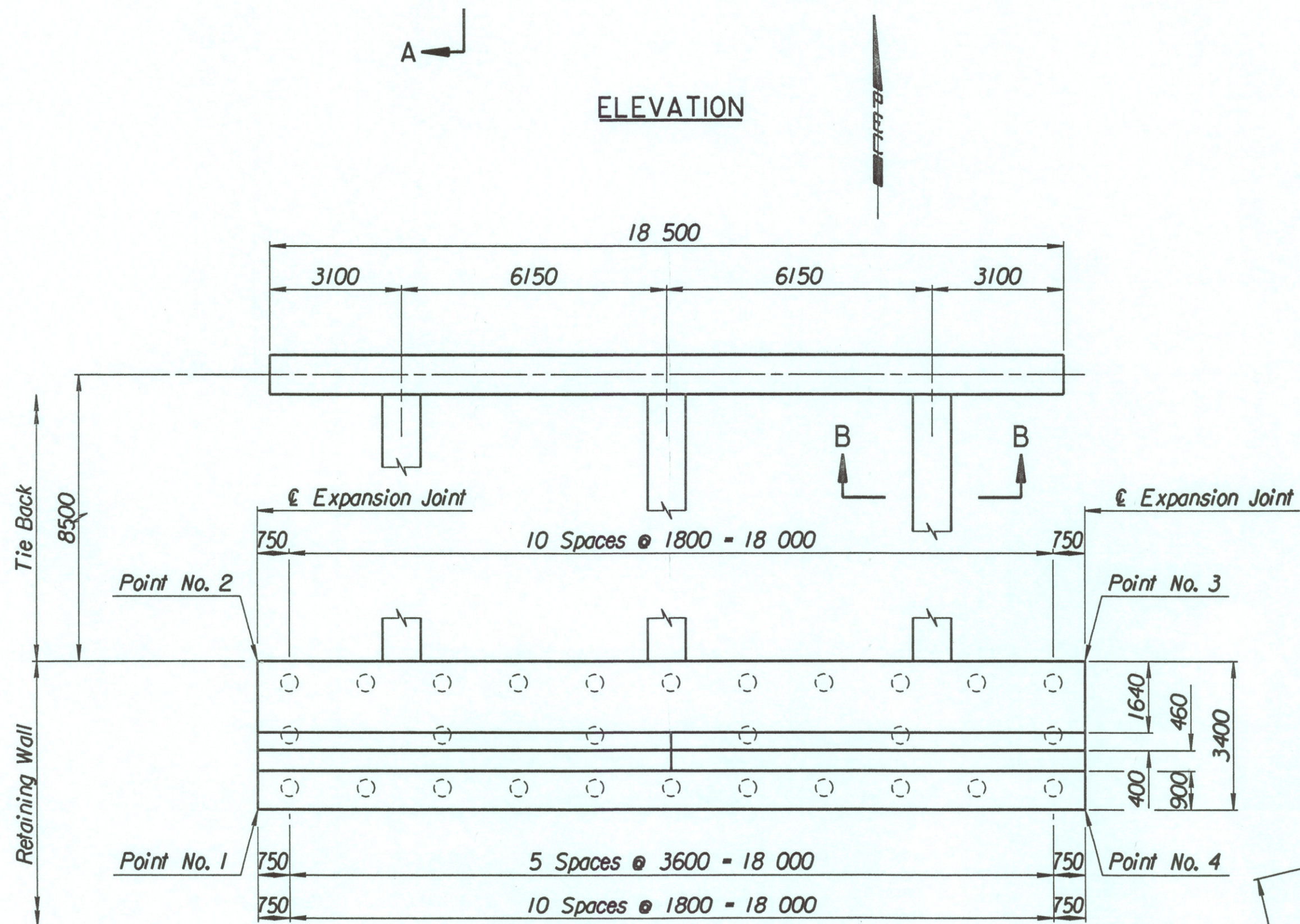
Point No.	North Coordinate	East Coordinate	Station	Offset
1	511865.079	492957.421	17+042.632	19.395 Ft.
2	511868.163	492955.989	17+042.632	15.995 Ft.
3	511876.377	492973.675	17+062.132	15.995 Ft.
4	511873.293	492975.107	17+062.132	19.395 Ft.

Straight Bars				Bent Bars			
Mark	Size	Number	Length	Mark	Size	Number	Length
H8-1	*25	164	3320	H8-3	*22	130	3110
H8-2	*25	44	10 670	H8-4	*22	66	2320
				H8-5	*19	130	1500
H8-6	*19	130	3760				
H8-7	*13	66	3450	H8-9	*16	66	1350
H8-8	*16	78	9650				
H8-10	*19	66	2760				
H8-11	*13	66	2860				
H8-12	*29	36	4000				

Item	Quantity	Unit
Pressure Grouted Pile (406 mm)	336.0	m
Concrete (Grade 30(AE))	117.8	m <sup>3</sup>
Reinforcing Steel (Grade 420)	9984	kg
Class III Excavation	139.6	m <sup>3</sup>



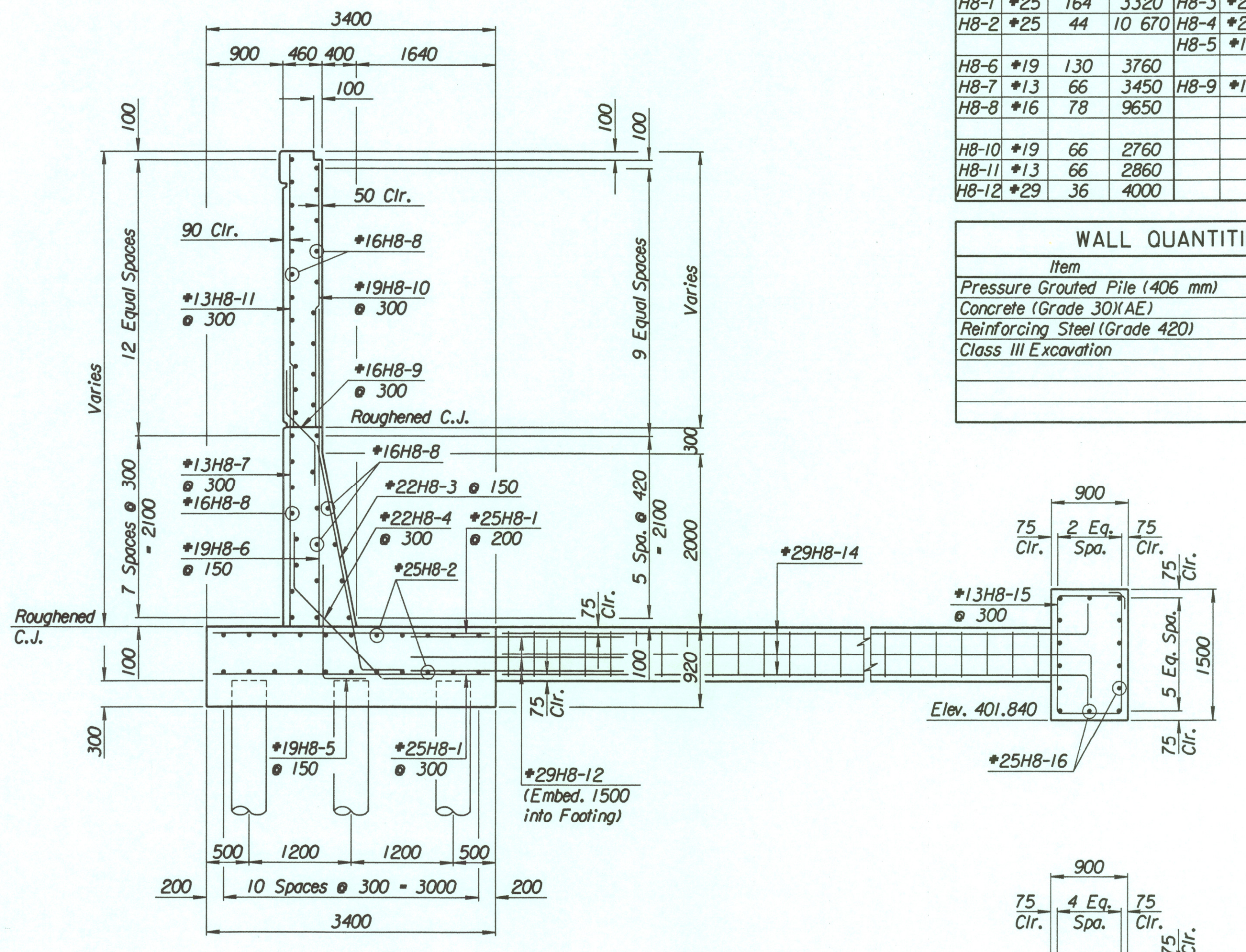
ELEVATION



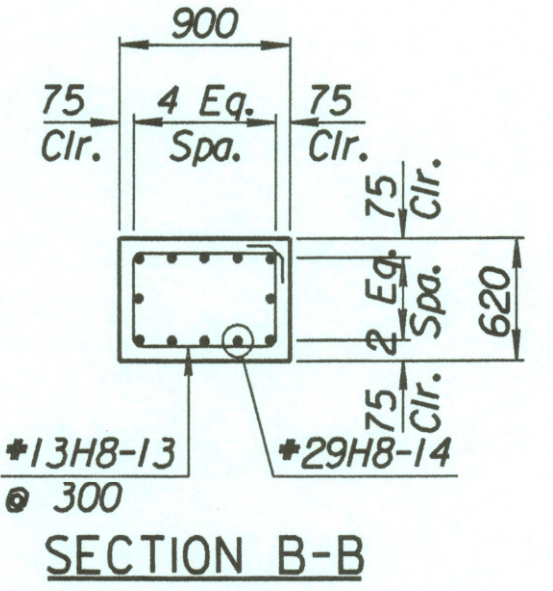
PLAN

Straight Bars				Bent Bars			
Mark	Size	Number	Length	Mark	Size	Number	Length
H8-16	*25	28	10 170	H8-13	*13	81	2740
				H8-14	*29	36	9000
				H8-15	*13	63	4500

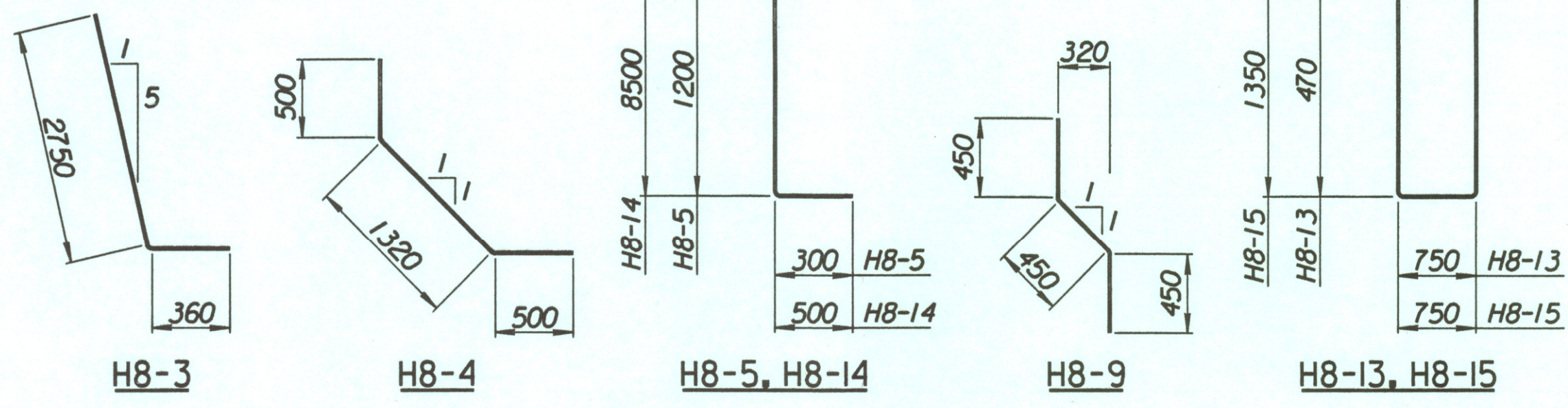
Item	Quantity	Unit
Concrete (Grade 30(AE))	38.5	m <sup>3</sup>
Reinforcing Steel (Grade 420)	3273	kg



SECTION A-A



SECTION B-B



BENDING DIAGRAMS  
All dimensions are out to out of bars.

Drawn by: will  
 Plotted by: drp  
 Date: 3-25-2002  
 File: i:\1997\97362\001\bridge\tylerrd\SWWall-8

No.		Revisions		By	Date
CITY OF WICHITA					
<b>TYLER SOUTHWEST WALL</b>					
STA. 17+042.632 TO STA. 17+062.132					
SEDGWICK COUNTY					
<b>Professional Engineering Consultants, P.A.</b> <small>303 S. TOPEKA • WICHITA, KANSAS 67202          316-262-2691 • FAX 316-262-3003</small>					
Designed by	P.D.F.	Checked by	R.A.S.		
Drawn by	W.L.L.	Date	April, 2002	Job No. 97362	