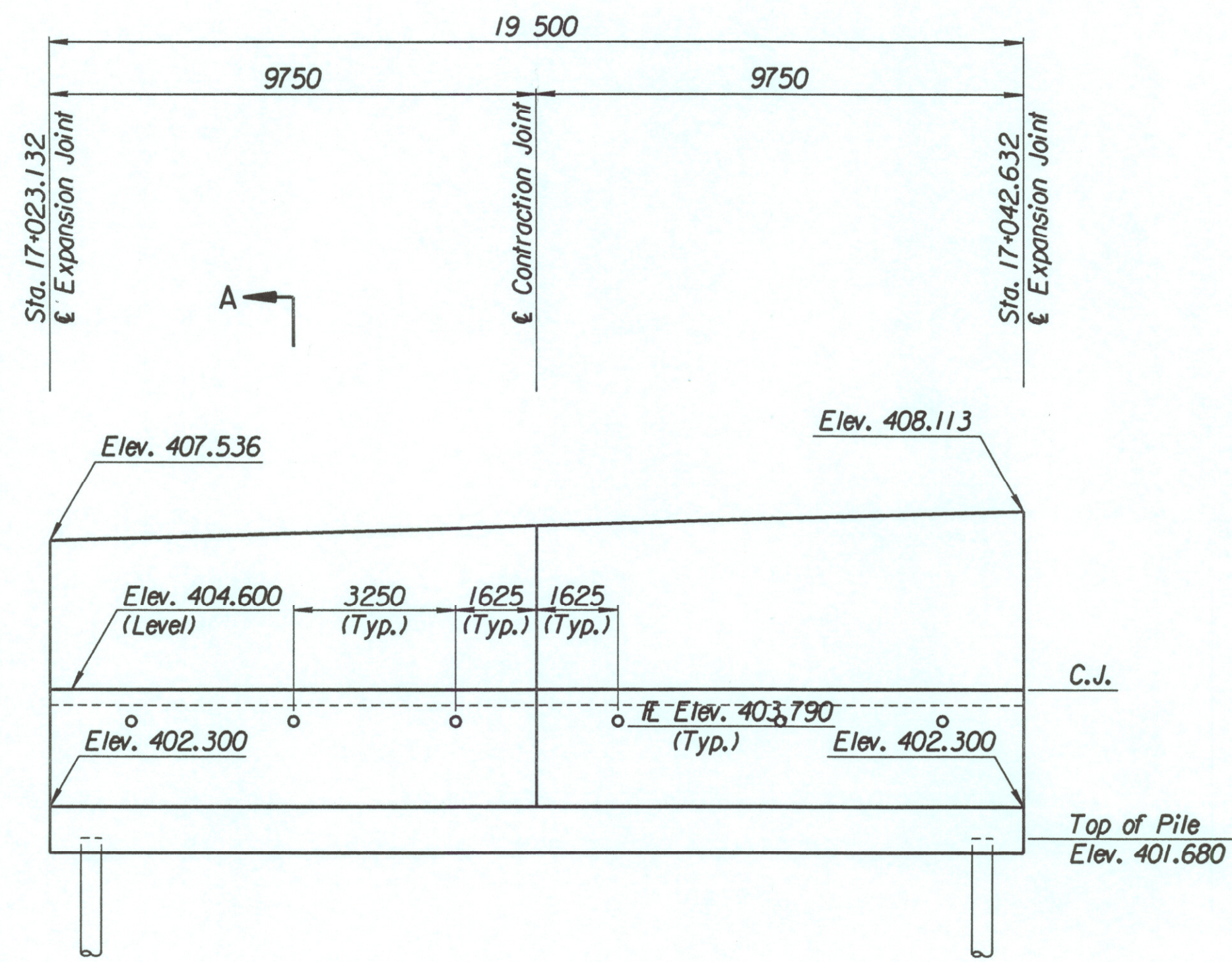


| | | | | |
|--------|-----------------|------|-----------|--------------|
| STATE | PROJECT NO. | YEAR | SHEET NO. | TOTAL SHEETS |
| KANSAS | 54-87 K-6657-01 | 2002 | 359 | 1122 |

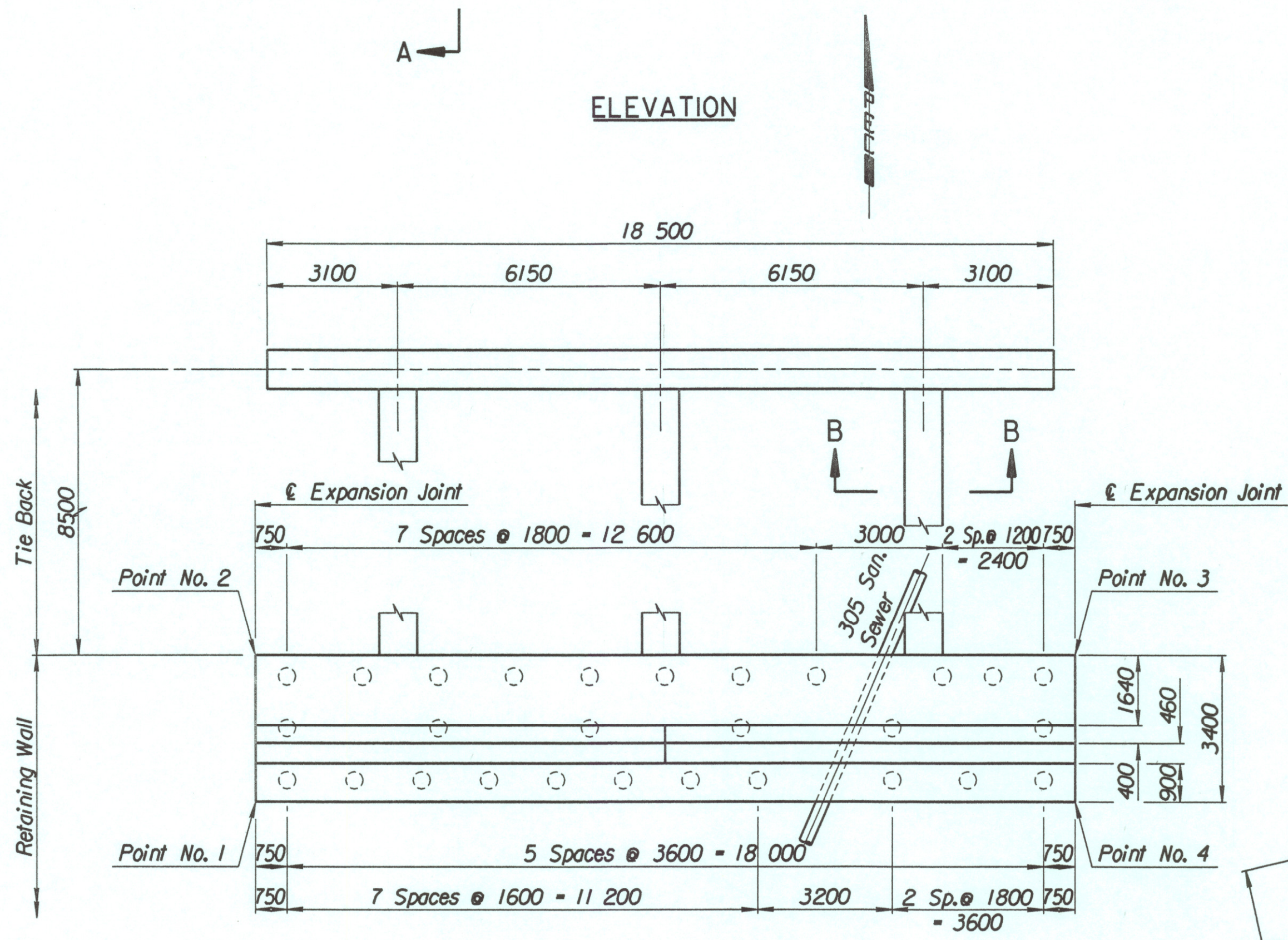
| Point No. | North Coordinate | East Coordinate | Station | Offset |
|-----------|------------------|-----------------|------------|------------|
| 1 | 511856.864 | 492939.736 | 17+023.132 | 19.395 Ft. |
| 2 | 511859.948 | 492938.304 | 17+023.132 | 15.995 Ft. |
| 3 | 511868.163 | 492955.989 | 17+042.632 | 15.995 Ft. |
| 4 | 511865.079 | 492957.421 | 17+042.632 | 19.395 Ft. |

| Straight Bars | | | | Bent Bars | | | |
|---------------|------|--------|--------|-----------|------|--------|--------|
| Mark | Size | Number | Length | Mark | Size | Number | Length |
| J8-1 | *25 | 164 | 3320 | J8-3 | *22 | 130 | 3110 |
| J8-2 | *25 | 44 | 10 670 | J8-4 | *22 | 66 | 2320 |
| J8-6 | *19 | 130 | 3790 | J8-5 | *19 | 130 | 1500 |
| J8-7 | *13 | 66 | 3490 | J8-9 | *16 | 66 | 1350 |
| J8-8 | *16 | 78 | 9650 | | | | |
| J8-10 | *19 | 66 | 2790 | | | | |
| J8-11 | *13 | 66 | 2890 | | | | |
| J8-12 | *29 | 36 | 4000 | | | | |

| Item | Quantity | Unit |
|--------------------------------|----------|----------------|
| Pressure Grouted Pile (406 mm) | 336.0 | m |
| Concrete (Grade 30)(AE) | 118.2 | m ³ |
| Reinforcing Steel (Grade 420) | 10 126 | kg |
| Class III Excavation | 189.2 | m ³ |



ELEVATION

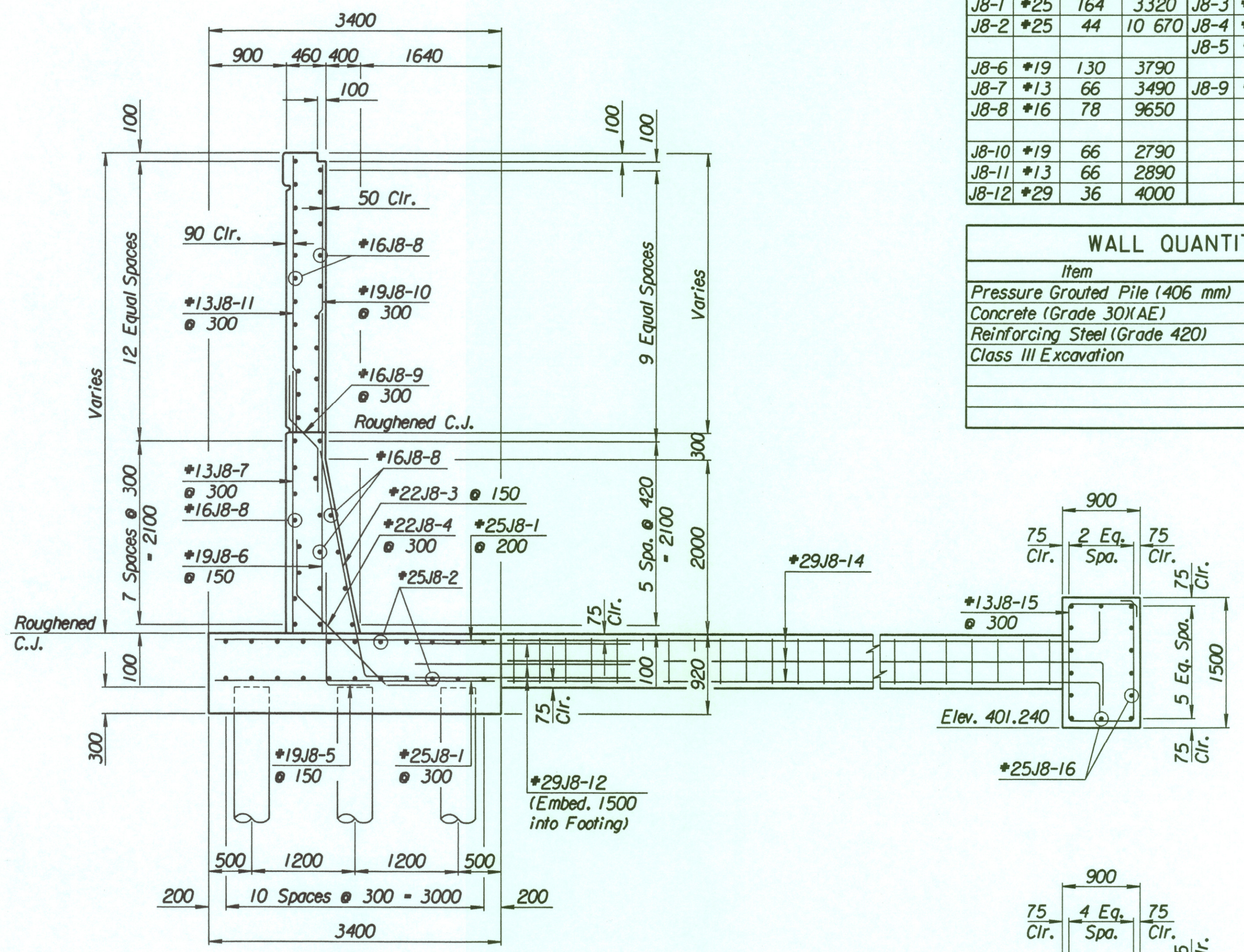


PLAN

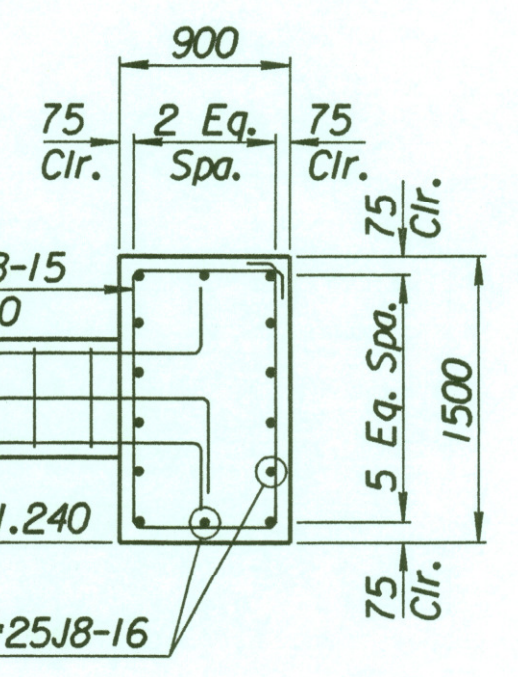
Note:
Contractor shall verify location of 305 mm Sanitary Sewer prior to Pile Drilling Operation.

| Straight Bars | | | | Bent Bars | | | |
|---------------|------|--------|--------|-----------|------|--------|--------|
| Mark | Size | Number | Length | Mark | Size | Number | Length |
| J8-16 | *25 | 28 | 10 170 | J8-13 | *13 | 81 | 2740 |
| | | | | J8-14 | *29 | 36 | 9000 |
| | | | | J8-15 | *13 | 63 | 4500 |

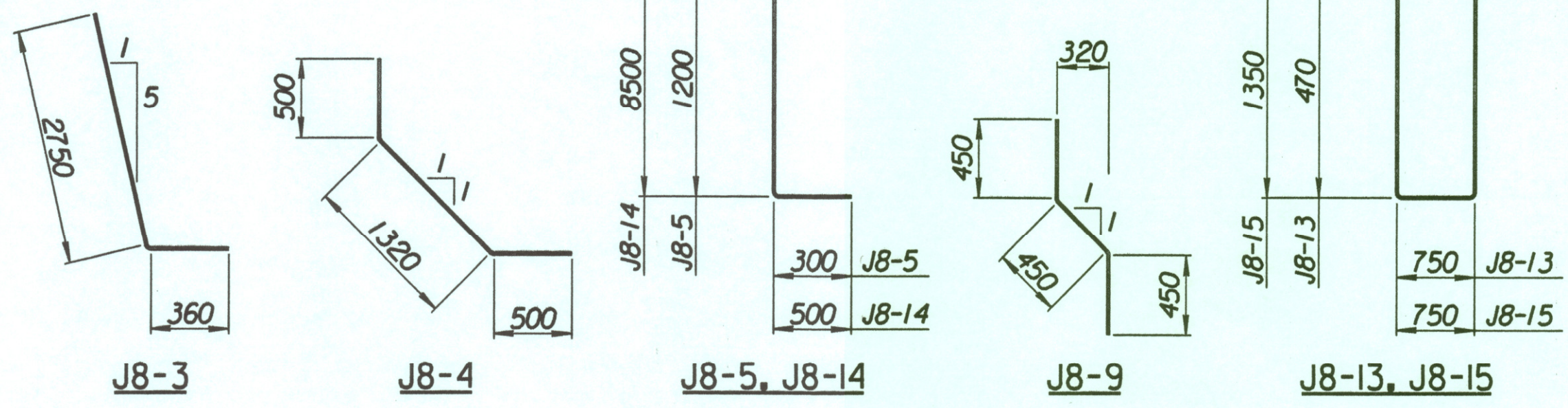
| Item | Quantity | Unit |
|-------------------------------|----------|----------------|
| Concrete (Grade 30)(AE) | 38.5 | m ³ |
| Reinforcing Steel (Grade 420) | 3273 | kg |



SECTION A-A



SECTION B-B



BENDING DIAGRAMS
All dimensions are out to out of bars.

| No. | Revisions | By | Date |
|-----|-----------|----|------|
|-----|-----------|----|------|

CITY OF WICHITA
TYLER SOUTHWEST WALL
STA. 17+023.132 TO STA. 17+042.632
SEDGWICK COUNTY

Professional Engineering Consultants, P.A.
303 S. TOPEKA • WICHITA, KANSAS 67202
316-262-2691 • FAX 316-262-3003
Designed by P.D.F. Checked by R.A.S.
Drawn by W.L.L. Date April, 2002 Job No. 97362

Drawn by: wil
Plotted by: drp 3-25-2002
i:/1997/97362/001/bridge/tylerd/SWwall-9