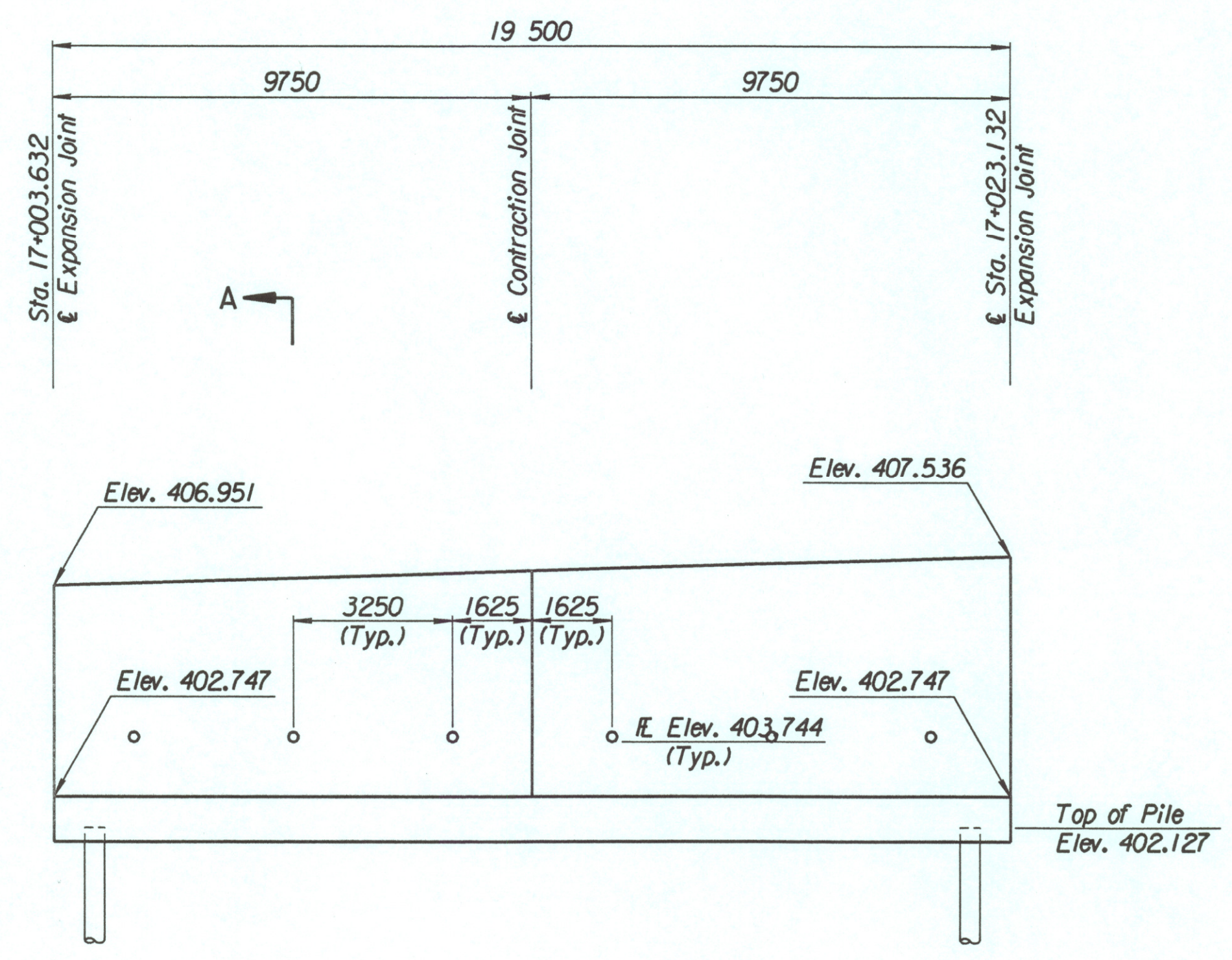


STATE	PROJECT NO.	YEAR	SHEET NO.	TOTAL SHEETS
KANSAS	54-87 K-6657-01	2002	360	1122

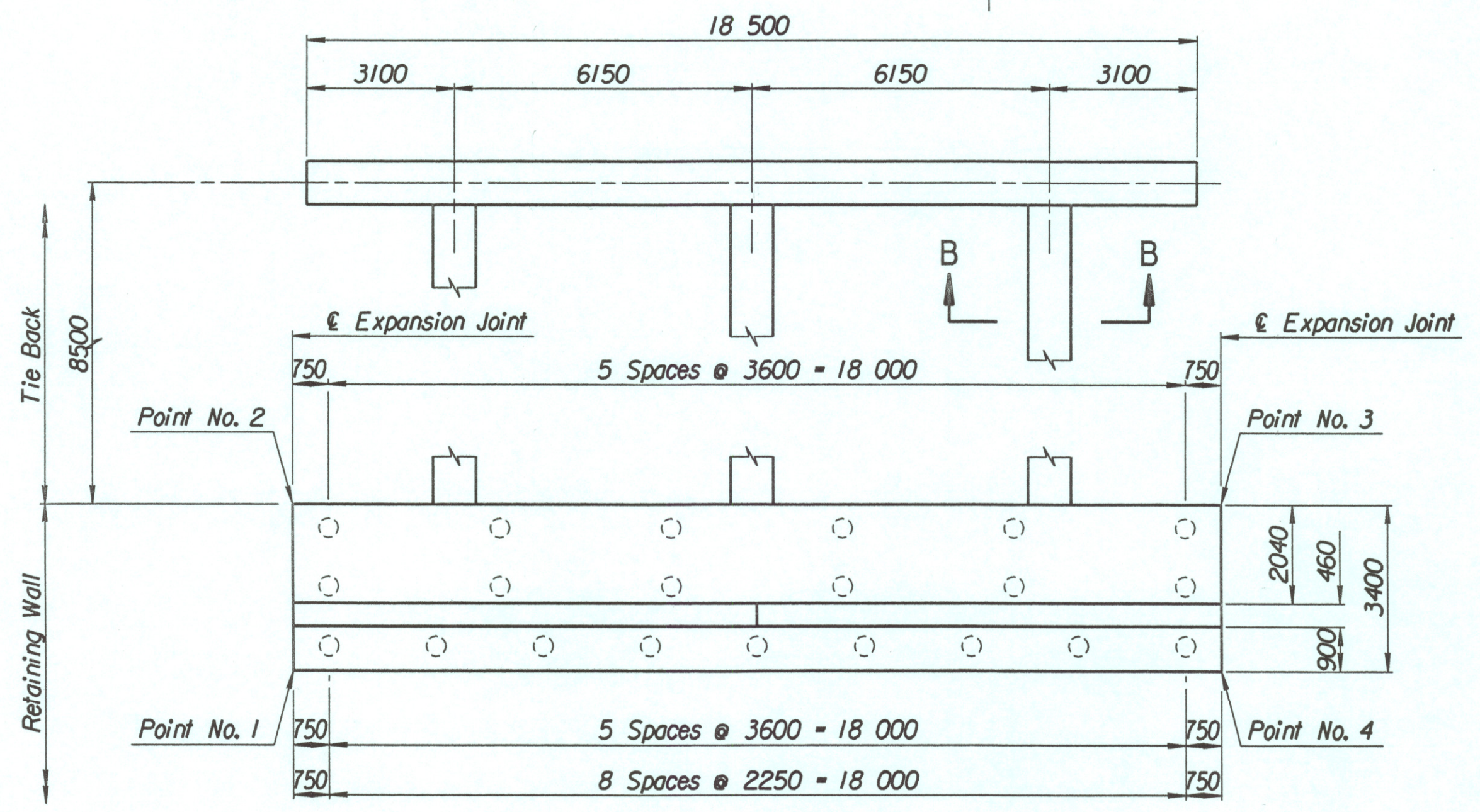
LAYOUT INFORMATION				
Point No.	North Coordinate	East Coordinate	Station	Offset
1	511848.650	492922.051	17+003.632	19.395 Rt.
2	511851.734	492920.618	17+003.632	15.995 Rt.
3	511859.948	492938.304	17+023.132	15.995 Rt.
4	511856.864	492939.736	17+023.132	19.395 Rt.

REINFORCING STEEL					
Straight Bars			Bent Bars		
Mark	Size	Length	Mark	Size	Length
K8-1	*25	164	K8-3	*25	130
K8-2	*25	44	K8-4	*19	66
K8-5	*16	60			
K8-6	*19	66			
K8-7	*13	66			
K8-8	*29	36			

WALL QUANTITIES		
Item	Quantity	Unit
Pressure Grouted Pile (406 mm)	252.0	m
Concrete (Grade 30)(AE)	101.1	m <sup>3</sup>
Reinforcing Steel (Grade 420)	8399	kg
Class III Excavation	154.1	m <sup>3</sup>



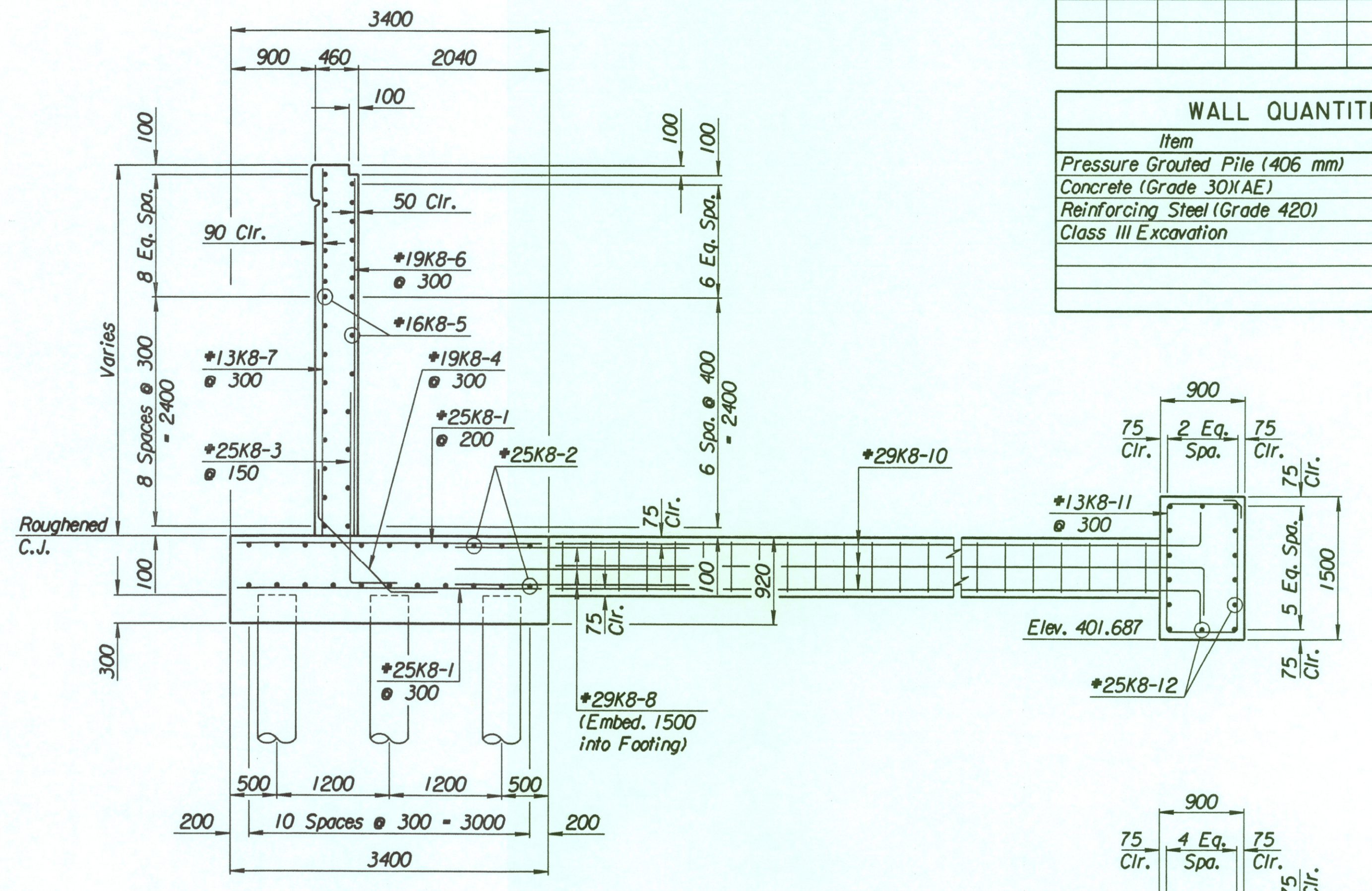
ELEVATION



PLAN

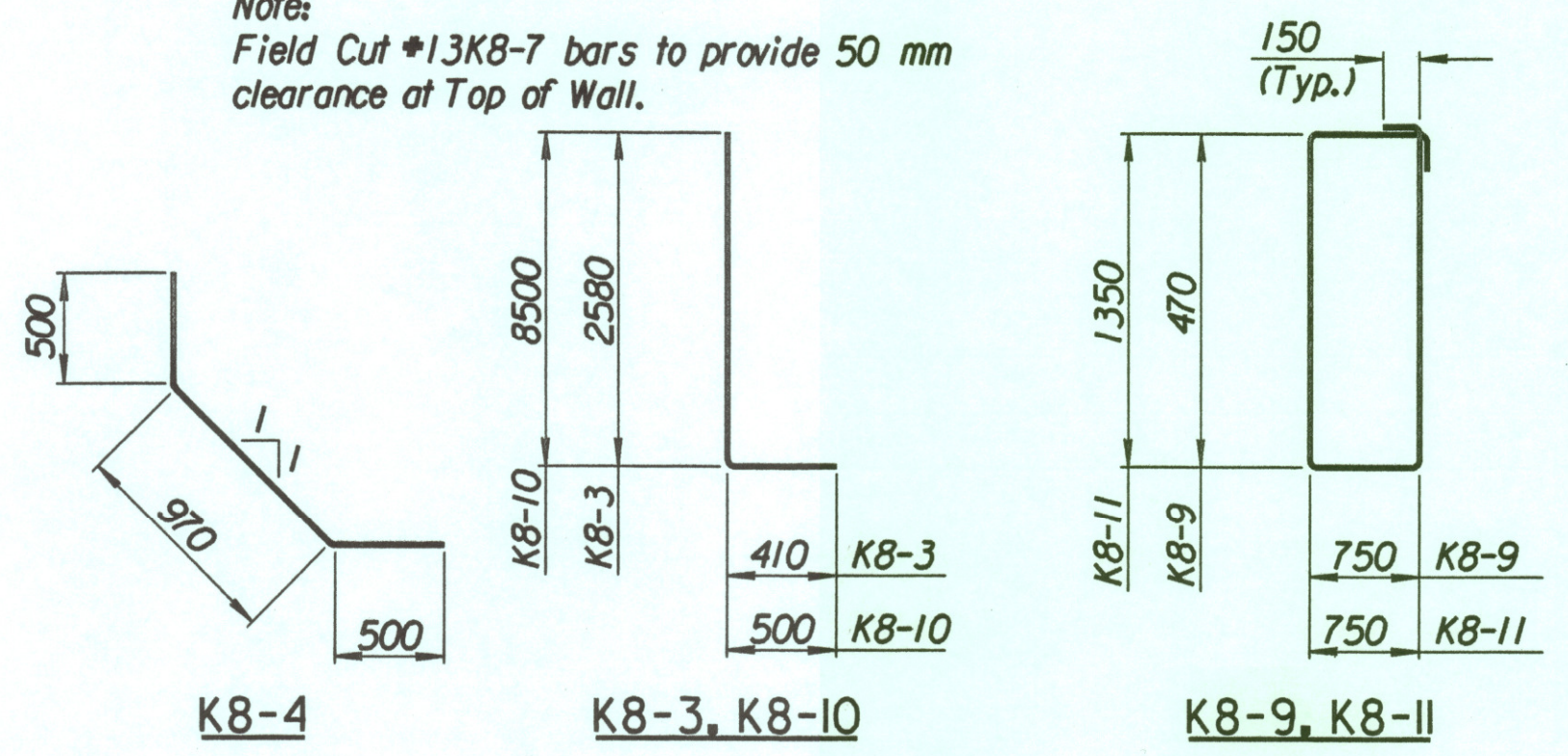
TIE BACK REINFORCING STEEL					
Straight Bars			Bent Bars		
Mark	Size	Length	Mark	Size	Length
K8-12	*25	28	K8-9	*13	81
			K8-10	*29	36
			K8-11	*13	63

TIE BACK QUANTITIES		
Item	Quantity	Unit
Concrete (Grade 30)(AE)	38.5	m <sup>3</sup>
Reinforcing Steel (Grade 420)	3273	kg



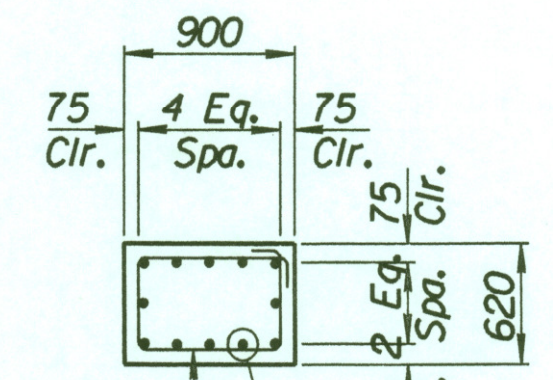
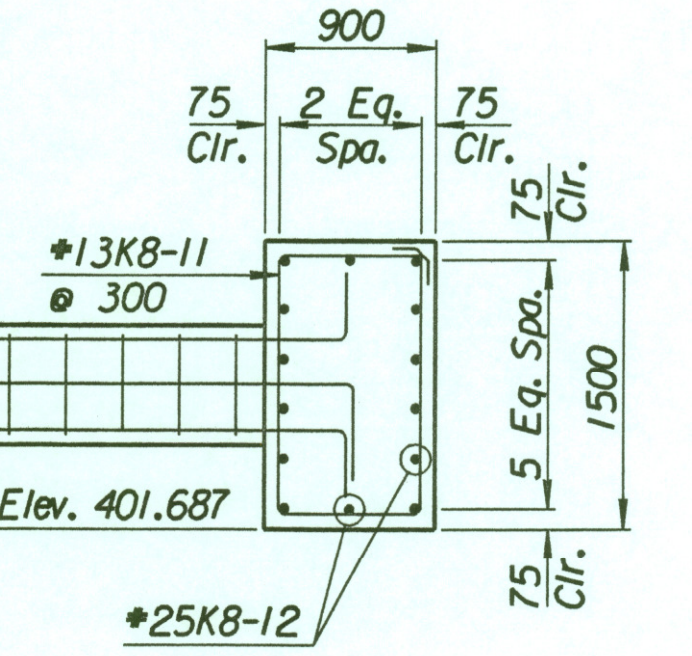
SECTION A-A

Note:  
Field Cut #13K8-7 bars to provide 50 mm clearance at Top of Wall.



BENDING DIAGRAMS

All dimensions are out to out of bars.



SECTION B-B

No.	Revisions	By	Date
-----	-----------	----	------

CITY OF WICHITA  
**TYLER SOUTHWEST WALL**  
 STA. 17+003.632 TO STA. 17+023.132  
 SEDGWICK COUNTY

Designed by	P.D.F.	Checked by	R.A.S.
Drawn by	W.L.L.	Date	Apr 11, 2002
		Job No.	97362

Drawn by: will  
 Plotted by: drp  
 3-25-2002  
 i:/1997/97362/001/bridge/tylerrd/SWwall-10