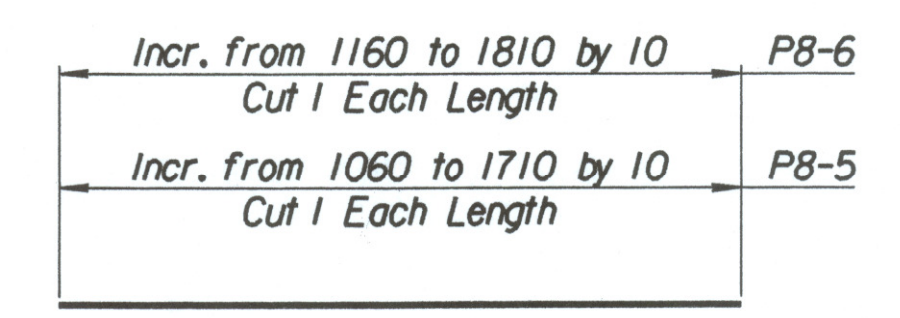
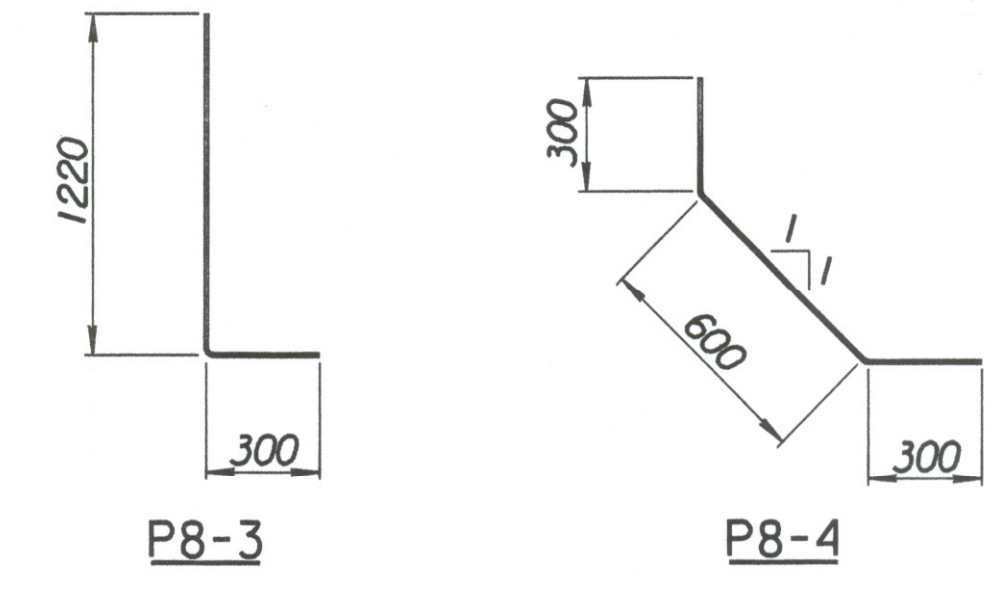
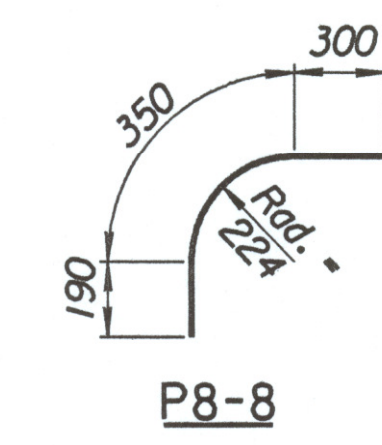
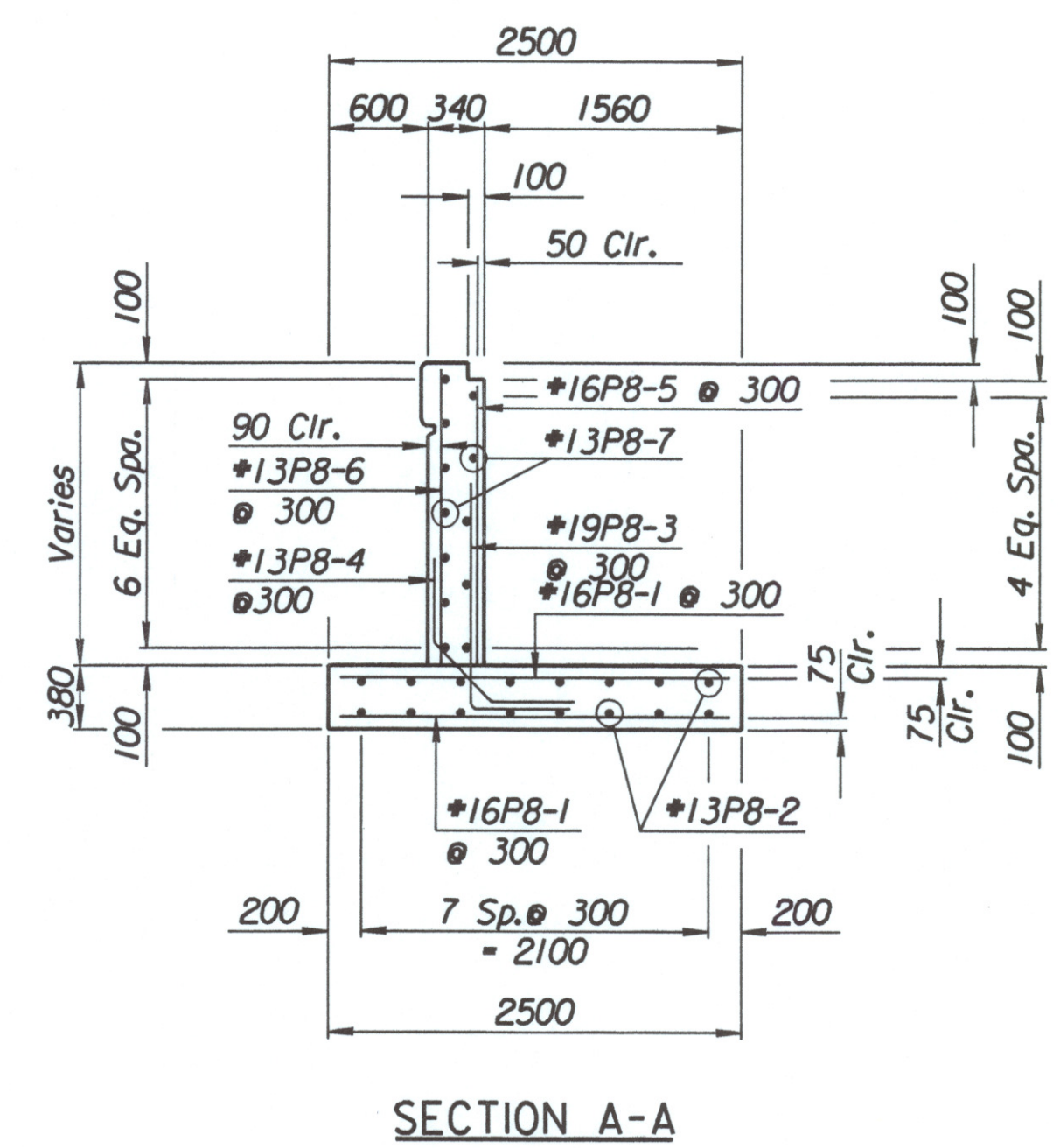
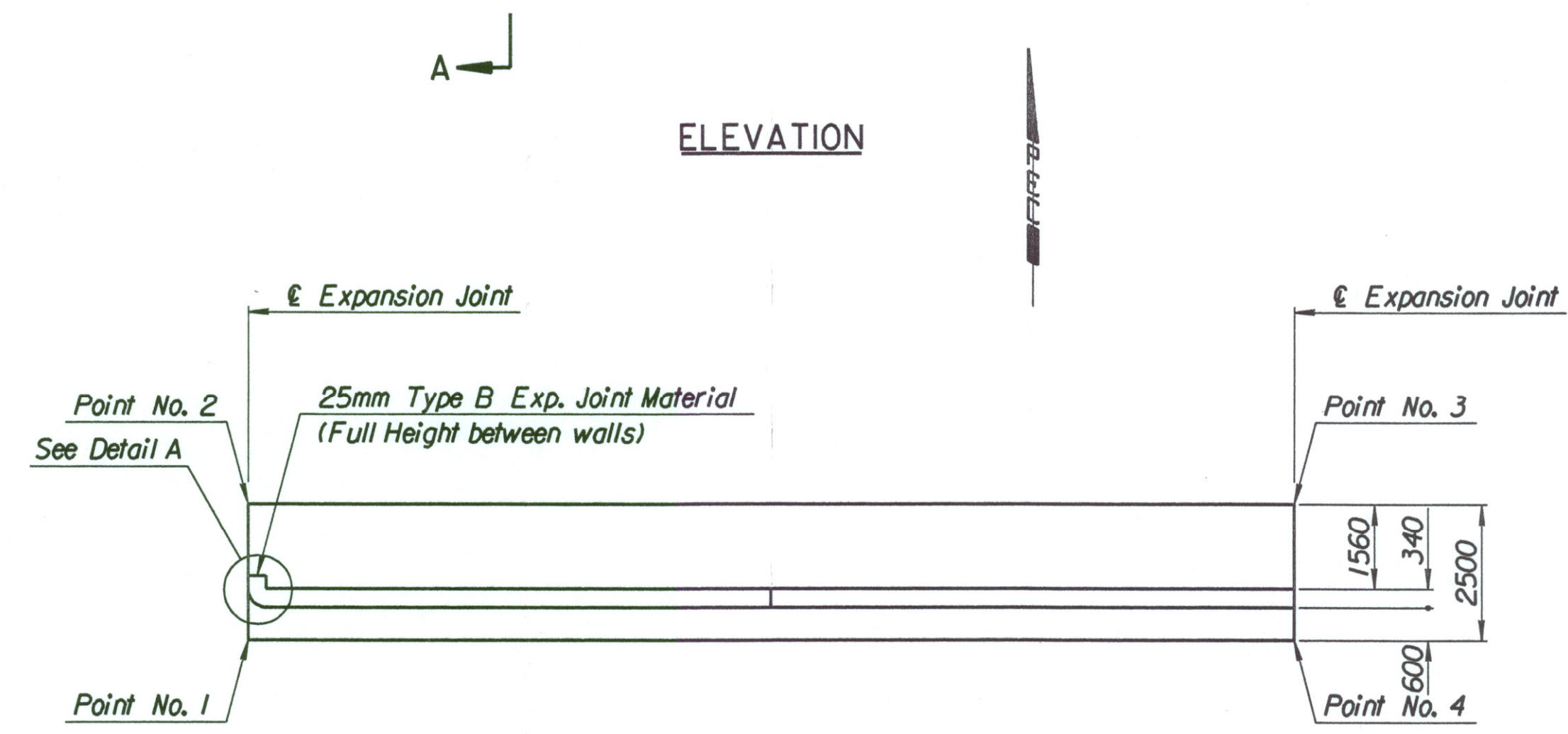
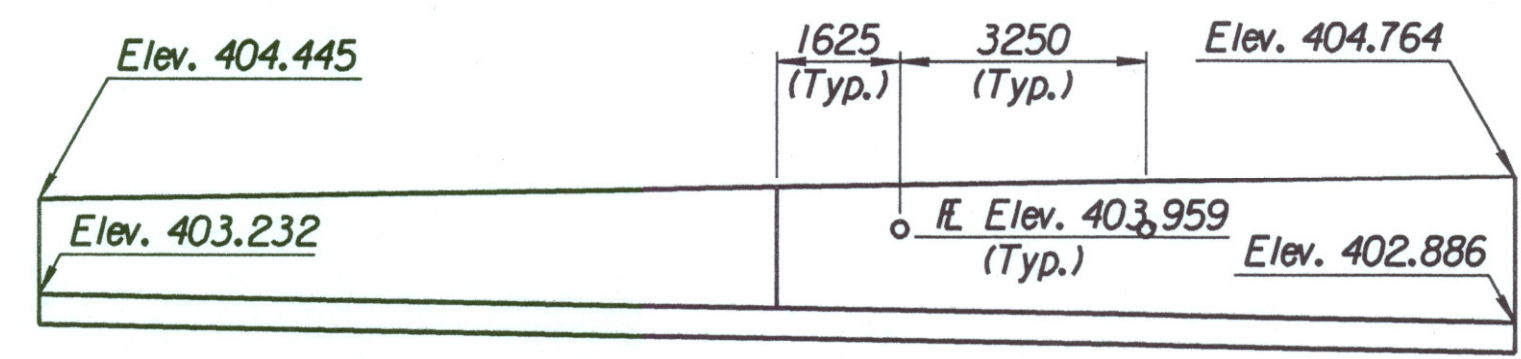
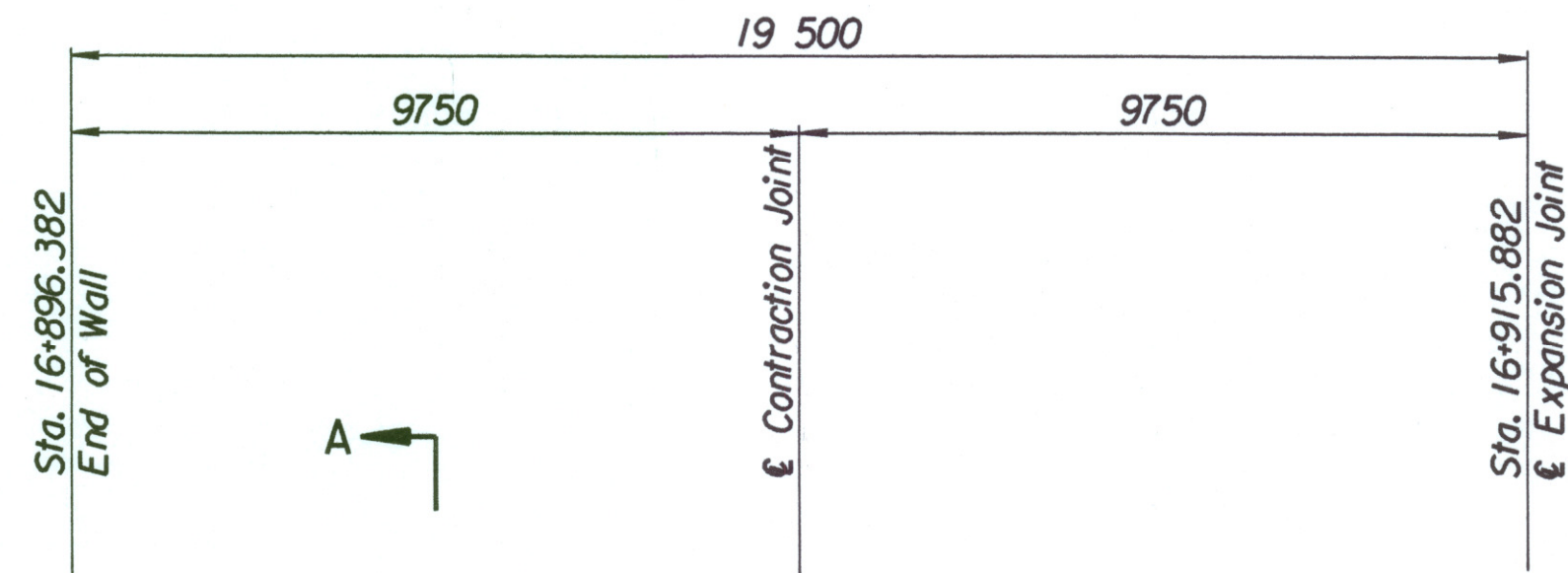


STATE	PROJECT NO.	YEAR	SHEET NO.	TOTAL SHEETS
KANSAS	54-87 K-6657-01	2002	364	1122

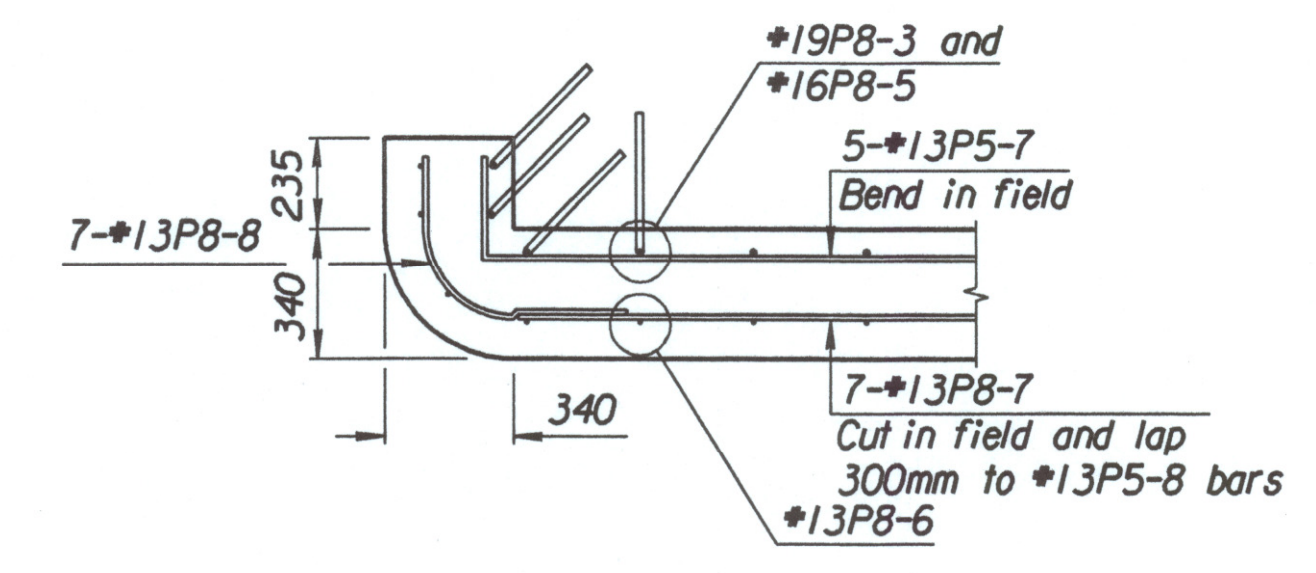
LAYOUT INFORMATION				
Point No.	North Coordinate	East Coordinate	Station	Offset
1	511803.742	492824.655	16+896.382	19.095 Ft.
2	511806.010	492823.602	16+896.382	16.595 Ft.
3	511814.224	492841.287	16+915.882	16.595 Ft.
4	511811.957	492842.340	16+915.882	19.095 Ft.

REINFORCING STEEL							
Straight Bars			Bent Bars				
Mark	Size	Number	Length	Mark	Size	Number	Length
P8-1	*16	132	2420	P8-3	*19	67	1520
P8-2	*13	32	10 100	P8-4	*13	66	1200
P8-5	*16	67	Varies	P8-8	*13	7	840
P8-6	*13	68	Varies				
P8-7	*13	24	9650				

WALL QUANTITIES		
Item	Quantity	Unit
Concrete (Grade 30)(AE)	28.6	m ³
Reinforcing Steel (Grade 420)	1602	kg
Class III Excavation	76.1	m ³



BENDING DIAGRAMS
All dimensions are out to out of bars.



DETAIL A
Note: End of wall section has an additional 2-*13P8-6, 1-*19P8-3 and 1-*16P8-5.

Drawn by: wll 3-25-2002
 Plotted by: drp
 i:/1997/97362/001/bridge/tylerd/SWwall-14

No.		Revisions		By	Date
CITY OF WICHITA					
TYLER SOUTHWEST WALL					
STA. 16+896.382 TO STA. 16+915.882					
SEDGWICK COUNTY					
Professional Engineering Consultants, P.A. <small>303 S. TOPEKA • WICHITA, KANSAS 67202 316-262-2691 • FAX 316-262-3003</small>					
Designed by	P.D.F.	Checked by	R.A.S.		
Drawn by	W.L.L.	Date	April, 2002	Job No. 97362	