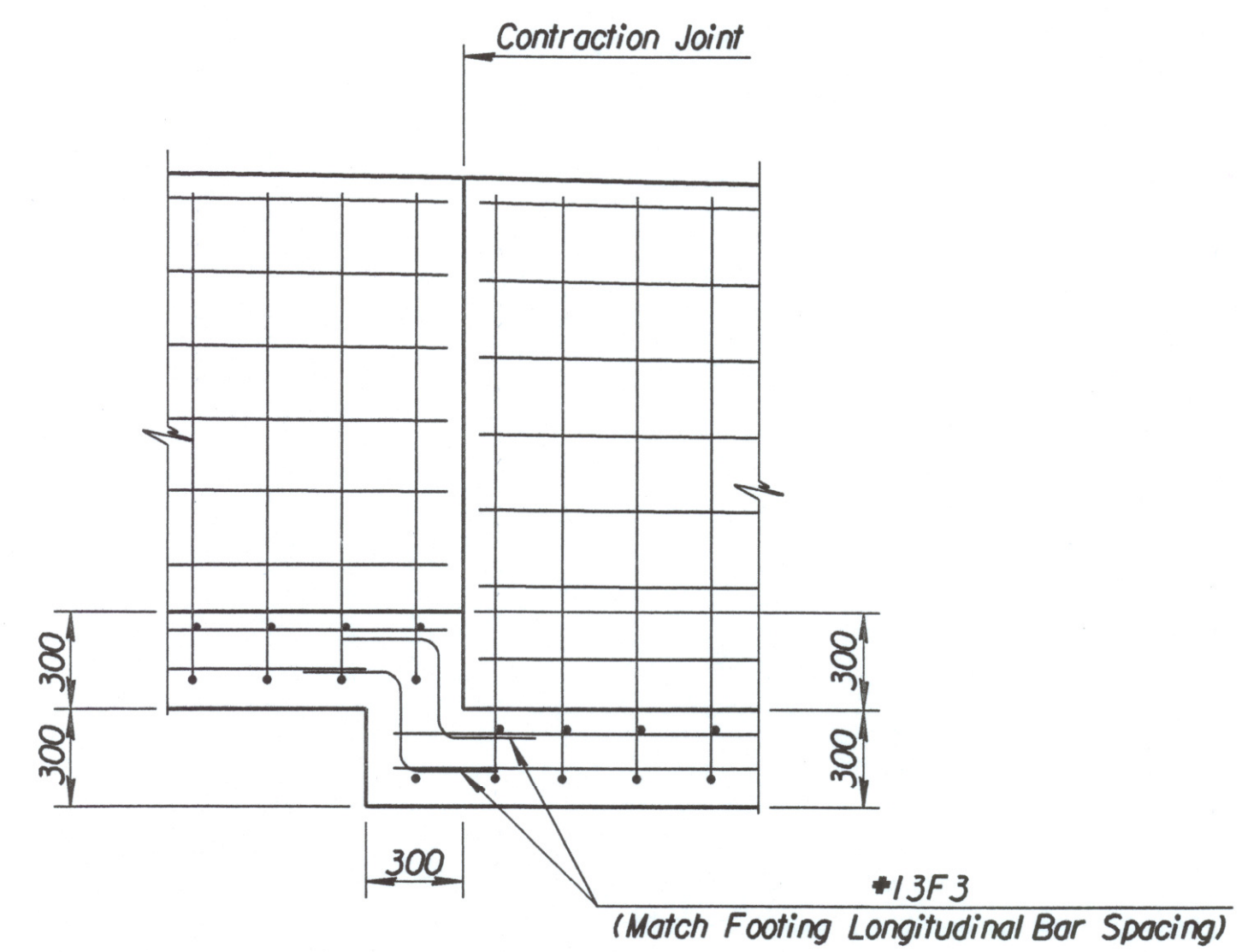


CONTRACTION JOINT DETAIL



FOOTING STEP ELEVATION

GENERAL NOTES:

CONCRETE: Concrete (Grade 30(AE)) shall be used throughout. Chamfer exposed edges with a 20 mm triangular moulding. Exposed surfaces shall be given a rubbed finish.

FORM LINER: Architectural form liner panels shall match other wall patterns on this project. Add backup strips as recommended by the manufacturer.

REINFORCING: All Reinforcing shall conform to ASTM A615M, Grade 420. All dimensions relative to reinforcing steel shall be to centerline of bar unless otherwise noted. Bar clearances shall be 40 mm unless otherwise noted.

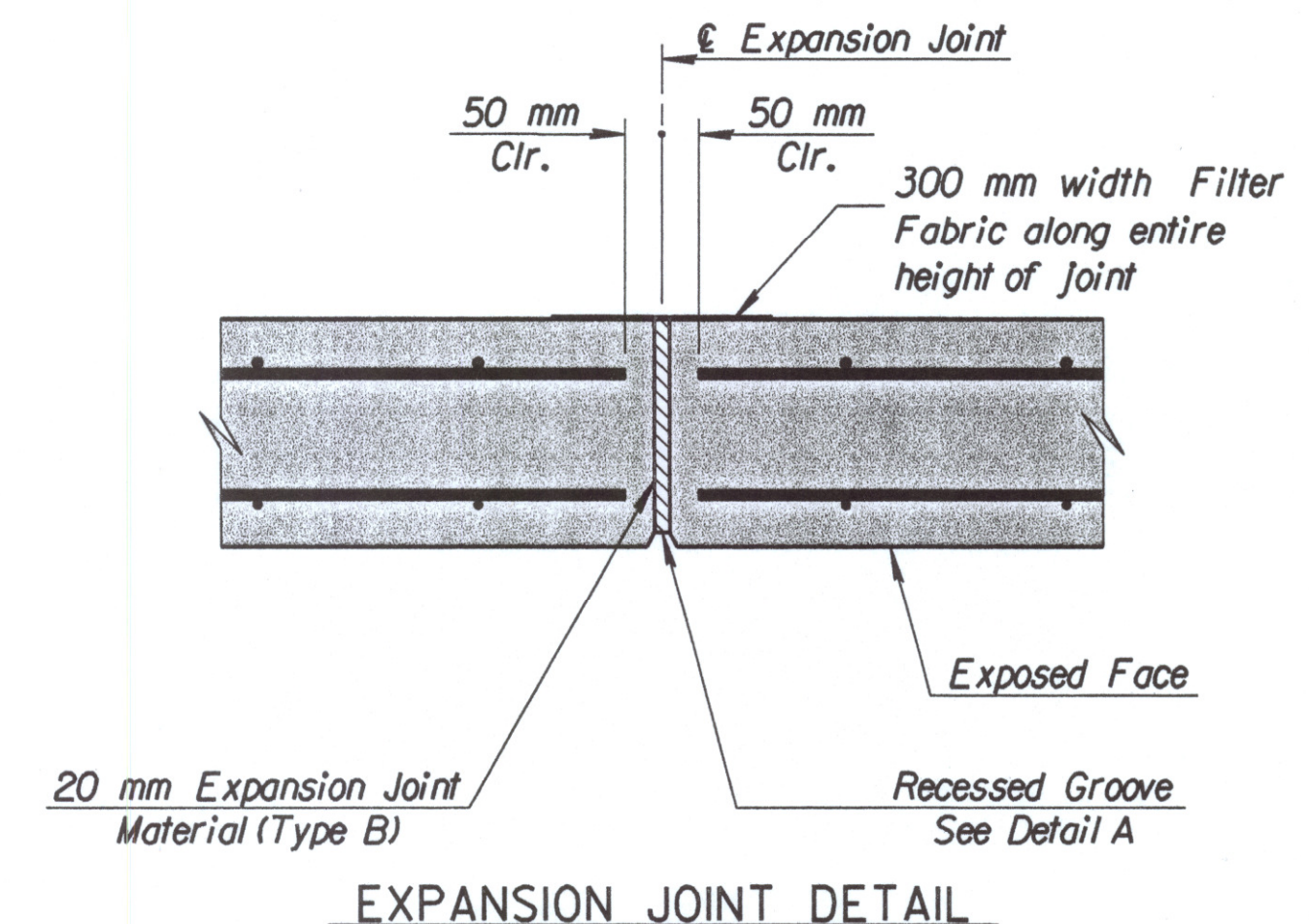
EXCAVATION: All excavation for the retaining walls shall be Class III Excavation. Pay limits are from bottom of footing to 300 mm beyond each edge where in cut.

COARSE AGGREGATE FILL: Coarse aggregate fill shall meet the requirements of Subsection 1102.02(a) for CA-4 or CA-5 of the Standard Specifications.

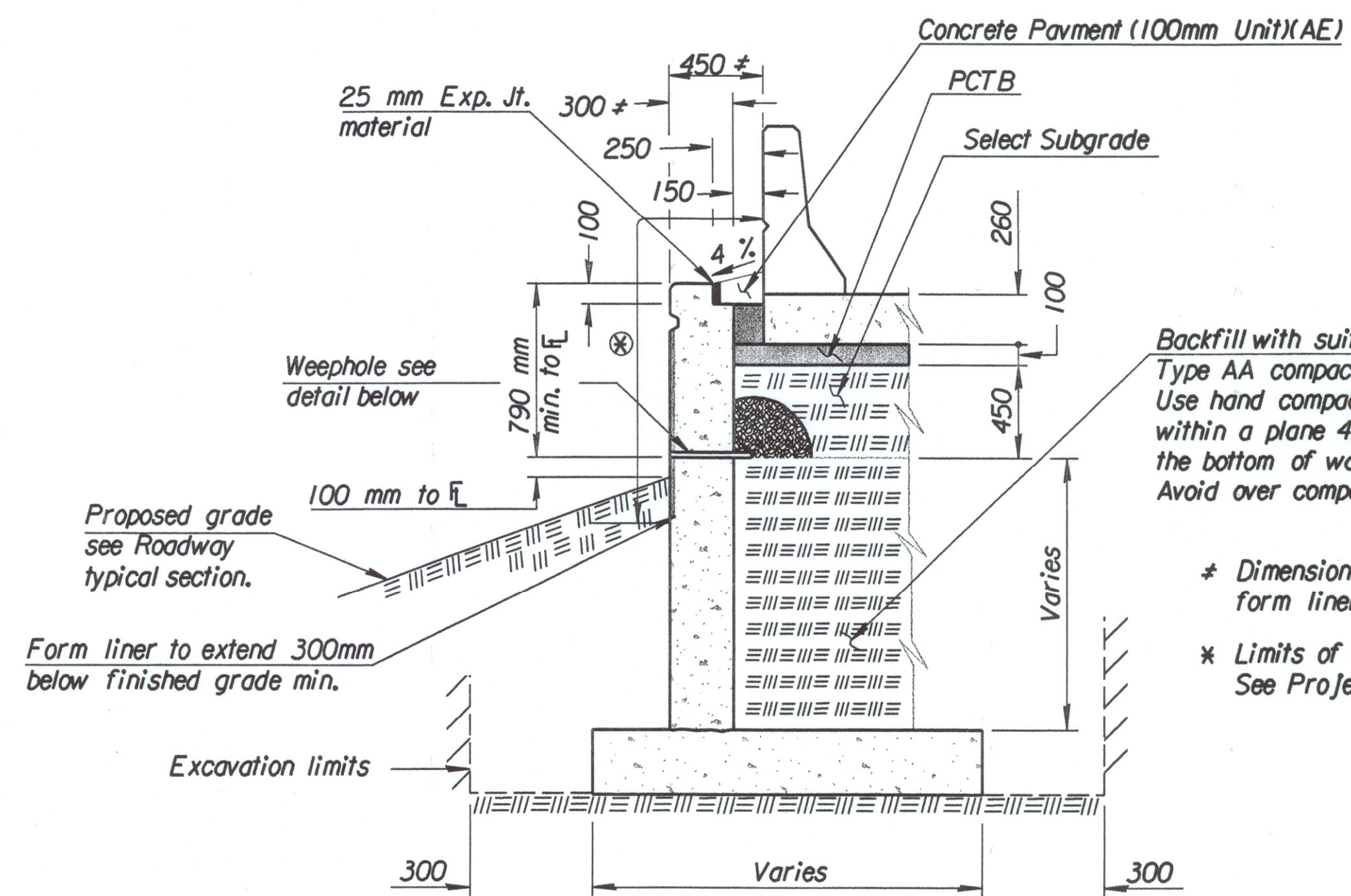
COMPACTION: Required compaction shall be made using small equipment which will not create additional stress against the retaining wall stem.

EXPANSION JOINT MATERIAL: Type B Expansion Joint Material shall conform to Section 1503 of the Standard Specifications. The Expansion Joint Material and 300 mm Filter Fabric shall be Subsidiary to the Bid Item "Concrete (Grade 30(AE))".

REINFORCING STEEL							
Straight Bars				Bent Bars			
Mark	Size	Number	Length	Mark	Size	Number	Length
F1	*16	358	1 120	F3	*13	24	900
F2	*16	648	1 420				
F4	*13	6	4 900	S1	*10	1006	1 035
F5	*13	6	8 200	V1	*16	17	1 680
F6	*13	21	11 000	V2	*16	27	1 960
F7	*13	98	11 840	V3	*16	27	2 200
F8	*13	48	11 960	V4	*16	27	2 160
				V5	*16	27	2 120
H1	*13	14	4 900	V6	*16	27	2 080
H2	*13	378	7 900	V7	*16	27	2 340
				V8	*16	27	2 320
W1	*13	17	1 100	V9	*16	27	2 280
W2	*13	27	1 380	V10	*16	27	2 240
W3	*13	27	1 620	V11	*16	27	2 220
W4	*13	27	1 580	V12	*16	27	2 180
W5	*13	27	1 540	V13	*16	27	2 160
W6	*13	27	1 500	V14	*16	27	2 160
W7	*13	27	1 760	V15	*16	27	2 160
W8	*13	27	1 740	V16	*16	27	2 180
W9	*13	27	1 700	V17	*16	27	2 220
W10	*13	27	1 660	V18	*16	27	2 240
W11	*13	27	1 640	V19	*16	27	2 260
W12	*13	27	1 600	V20	*16	27	2 300
W13	*13	27	1 580	V21	*16	27	2 320
W14	*13	27	1 580	V22	*16	27	2 340
W15	*13	27	1 580	V23	*16	27	2 300
W16	*13	27	1 600	V24	*16	27	2 280
W17	*13	27	1 640	V25	*16	27	2 240
W18	*13	27	1 660	V26	*16	27	2 220
W19	*13	27	1 680	V27	*16	27	1 880
W20	*13	27	1 720	V28	*16	27	1 860
W21	*13	27	1 740	V29	*16	27	1 820
W22	*13	27	1 760	V30	*16	27	1 800
W23	*13	27	1 720	V31	*16	27	1 760
W24	*13	27	1 700	V32	*16	27	1 720
W25	*13	27	1 660	V33	*16	27	1 660
W26	*13	27	1 640	V34	*16	27	1 600
W27	*13	27	1 300	V35	*16	27	1 540
W28	*13	27	1 280	V36	*16	27	1 460
W29	*13	27	1 240	V37	*16	27	1 380
W30	*13	27	1 220	V38	*16	17	1 320
W31	*13	27	1 180				
W32	*13	27	1 140				
W33	*13	27	1 080				
W34	*13	27	1 020				
W35	*13	27	960				
W36	*13	27	880				
W37	*13	27	800				
W38	*13	17	740				

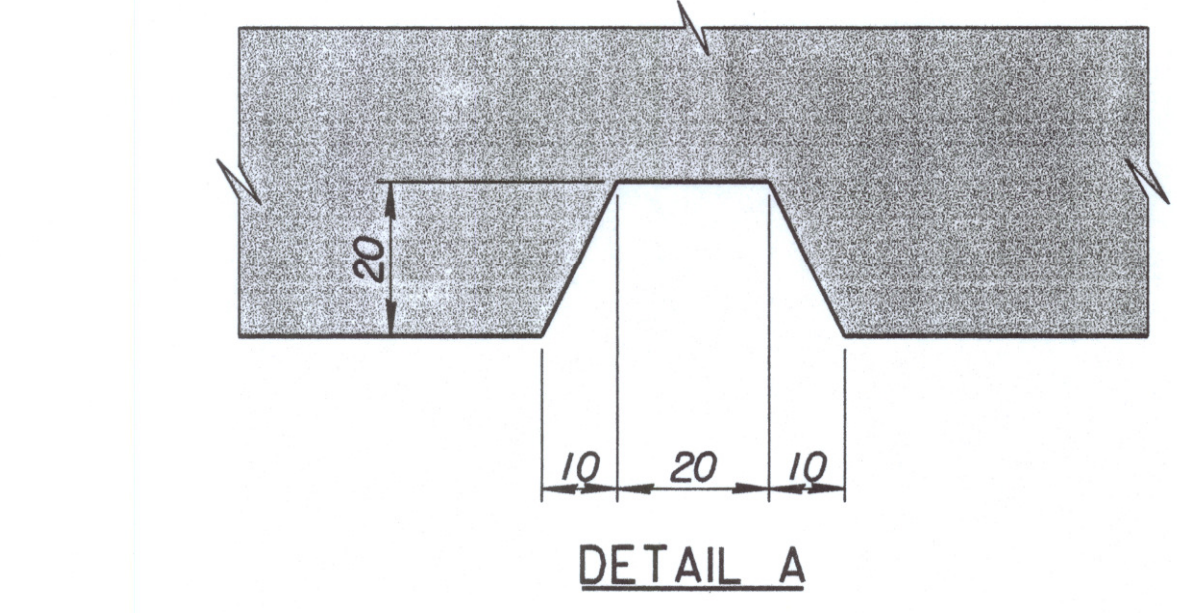


EXPANSION JOINT DETAIL

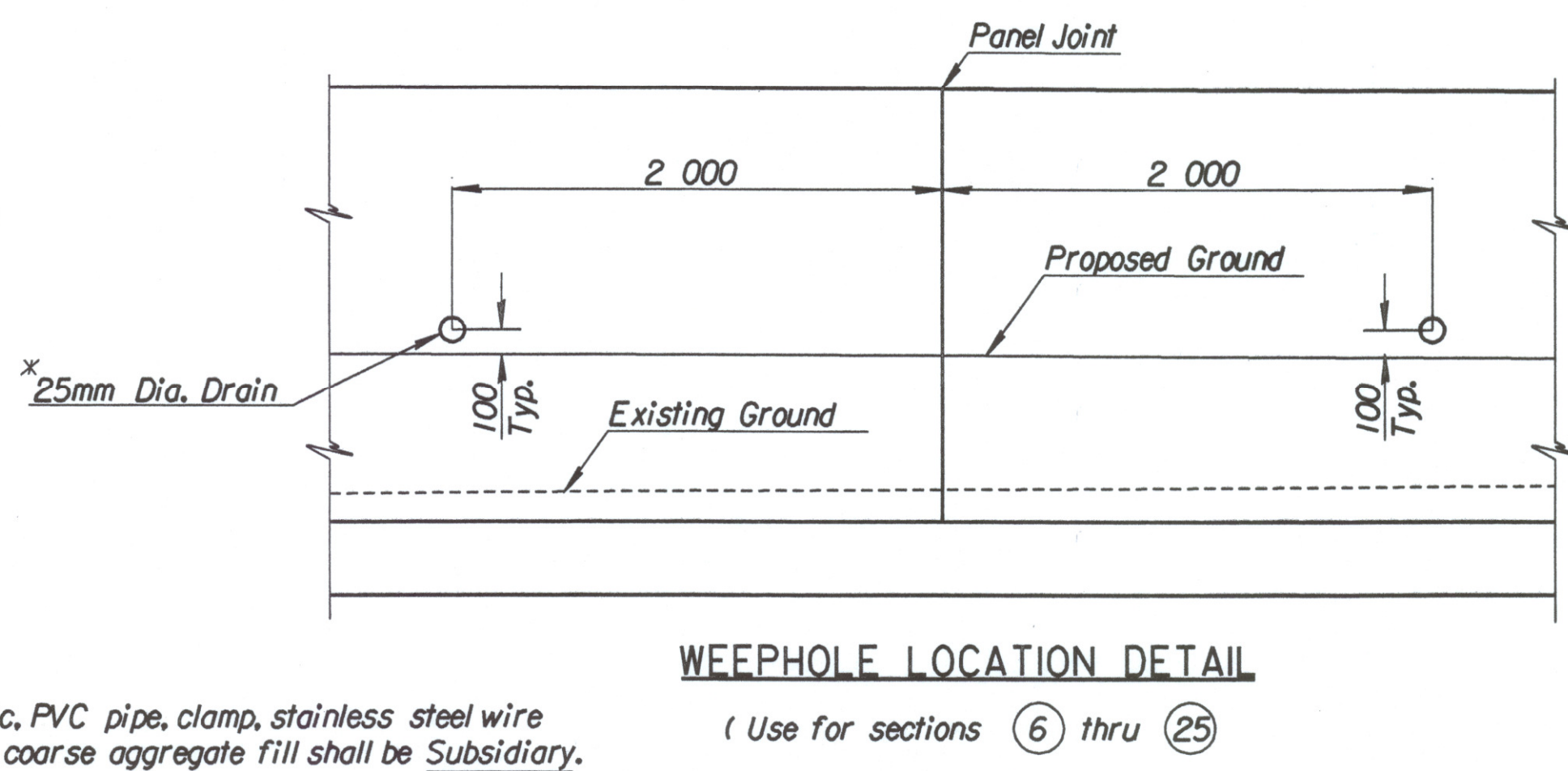


SECTION THRU RETAINING WALL

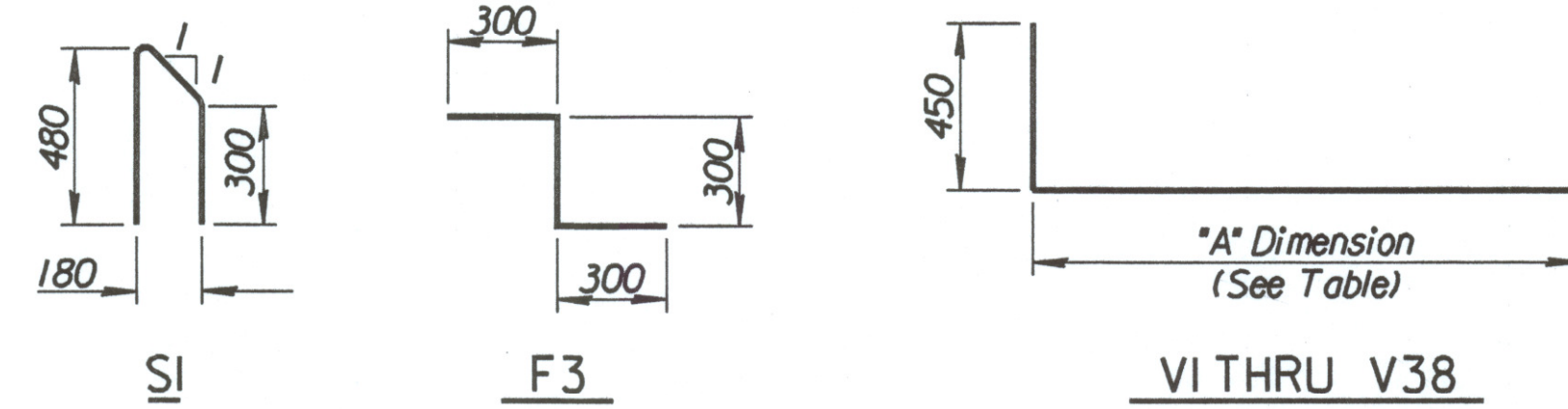
*16V WALL VERTICAL REINFORCING "A" DIMENSION			
*16V1	1 230	*16V20	1 850
*16V2	1 510	*16V21	1 870
*16V3	1 750	*16V22	1 890
*16V4	1 710	*16V23	1 850
*16V5	1 670	*16V24	1 830
*16V6	1 630	*16V25	1 790
*16V7	1 890	*16V26	1 770
*16V8	1 870	*16V27	1 430
*16V9	1 830	*16V28	1 410
*16V10	1 790	*16V29	1 370
*16V11	1 770	*16V30	1 350
*16V12	1 730	*16V31	1 310
*16V13	1 710	*16V32	1 270
*16V14	1 710	*16V33	1 210
*16V15	1 710	*16V34	1 150
*16V16	1 730	*16V35	1 090
*16V17	1 770	*16V36	1 010
*16V18	1 790	*16V37	930
*16V19	1 810	*16V38	870



DETAIL A



WEEPHOLE LOCATION DETAIL



BENDING DIAGRAMS
All Dimensions are out to out of bars.

SUMMARY OF QUANTITIES	
Concrete (Grade 30(AE))	264.1 m ³
Reinforcing Steel (GR. 420)	12 360.00 kg
Class III Excavation	m ³
Surface Coating Finish	462.0 s.m.

1

No. Revisions By Date

CITY OF WICHITA

GENERAL NOTES AND REINFORCING DETAILS

RETAINING WALL #10

SEDGWICK COUNTY

Professional Engineering Consultants, P.A.
303 S. TOPEKA - WICHITA, KANSAS 67202
316-262-2691 • FAX 316-262-3003

Designed by SET Checked by R.A.S.
Drawn by DWK Date April, 2002 Job No. 97362

DSNR: DWK OPER: JGP SCALE: 1:1/1997/97362/001/RET WALL/WALL10/GENNTE10.DGN 3-01-2002 9:38:08 LAST REV: 3-25-2002 BY: svb