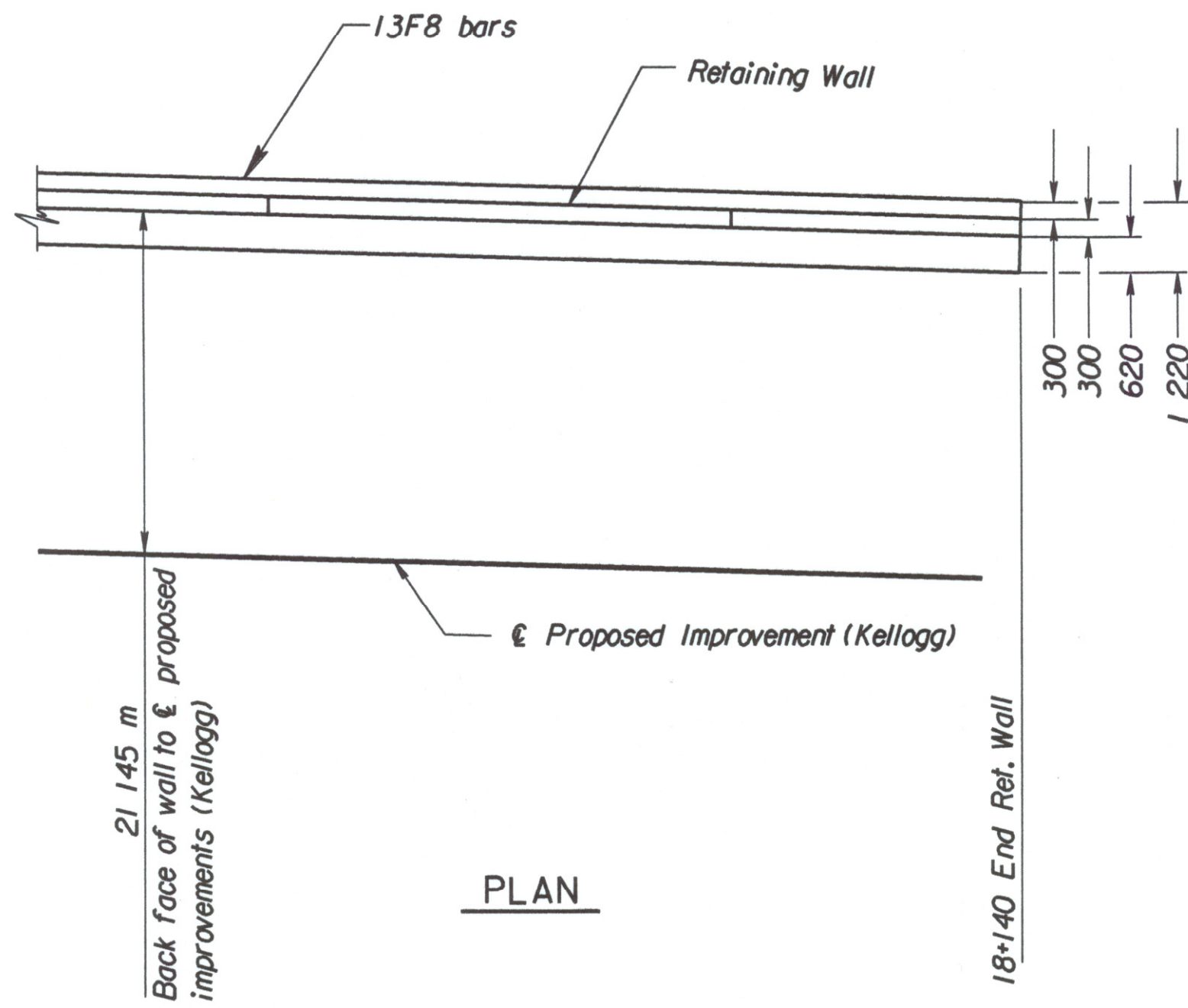


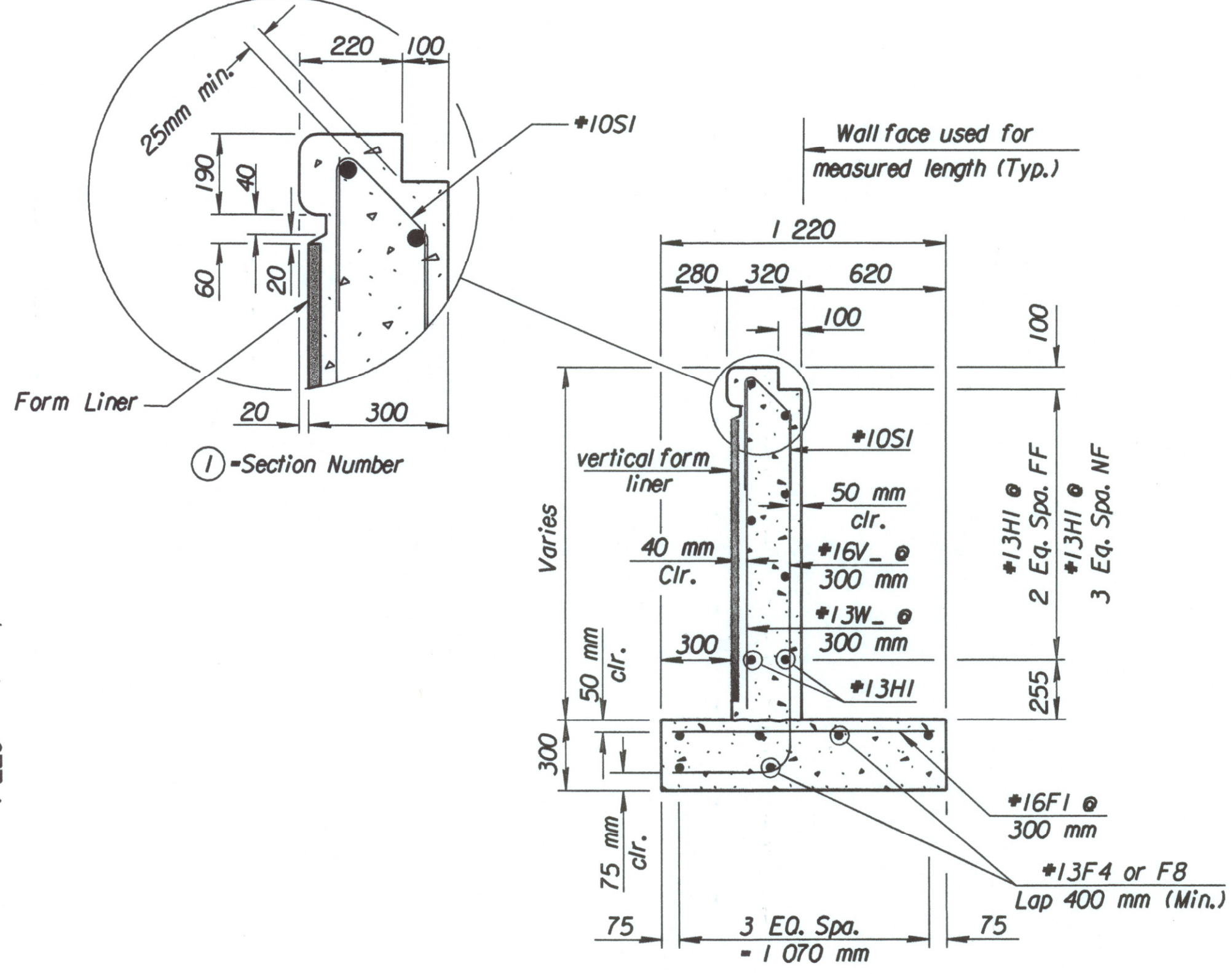
STATE	PROJECT NO.	YEAR	SHEET NO.	TOTAL SHEETS
KANSAS	54-87 K-6657-01	2002	374	1122

18+140 & Proposed Improvement (Kellogg) - End of wall
N. 512,222.332 E. 493,986.334

DATE	
BY	
REFERENCES NOTED	
REFERENCES CHECKED	

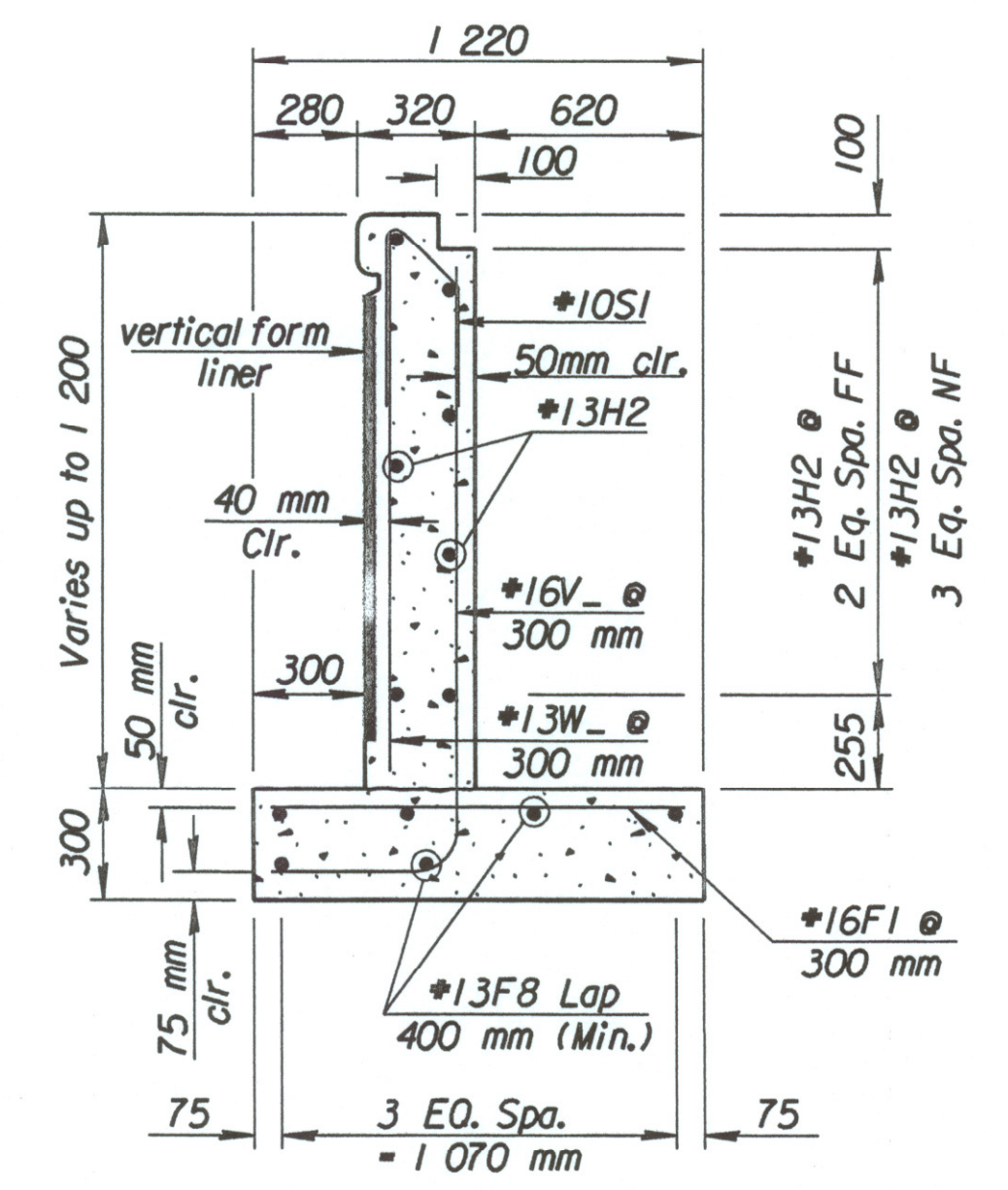


PLAN



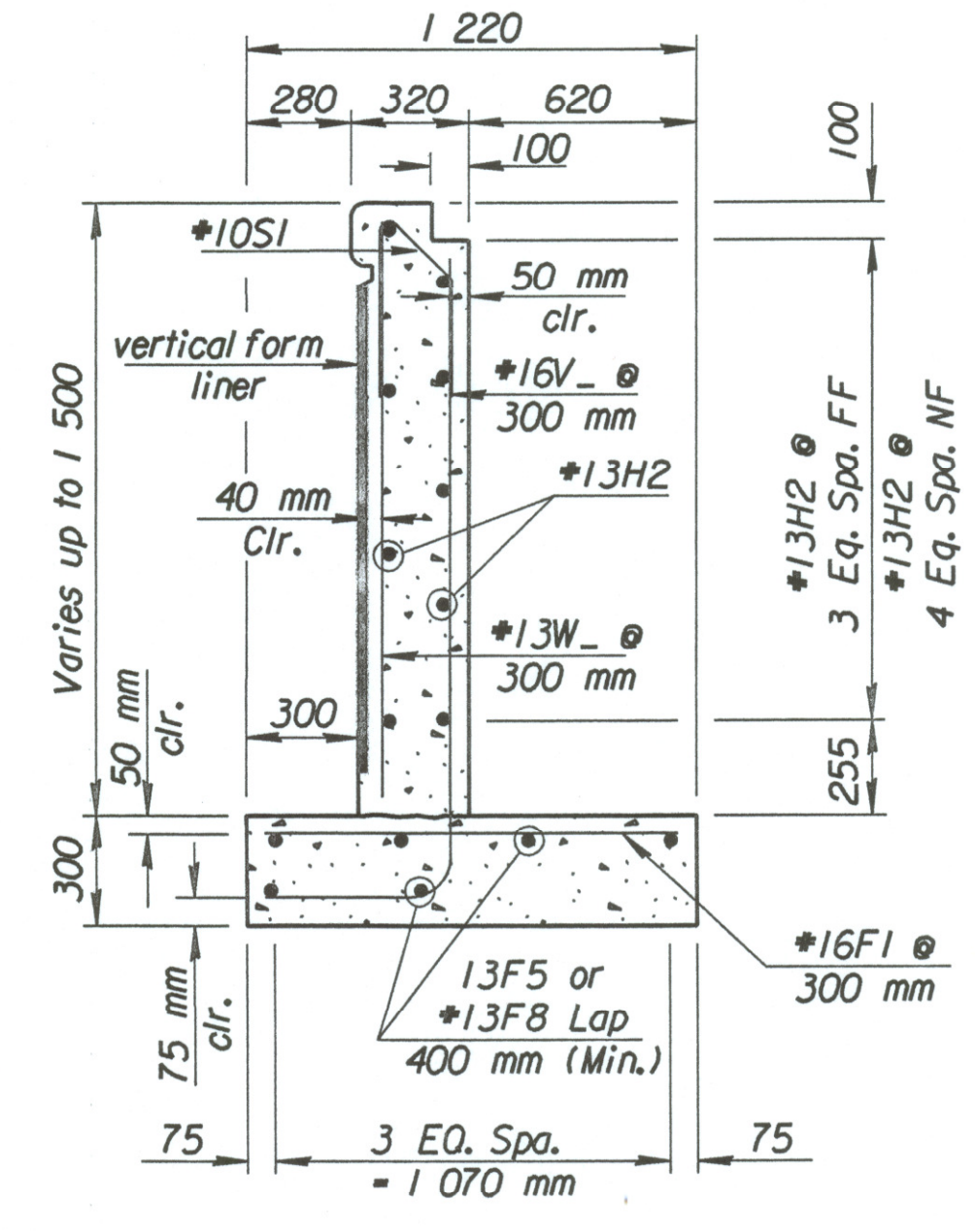
SECTION A-A

(Use for 5 m end Sections ① - ③⑧)



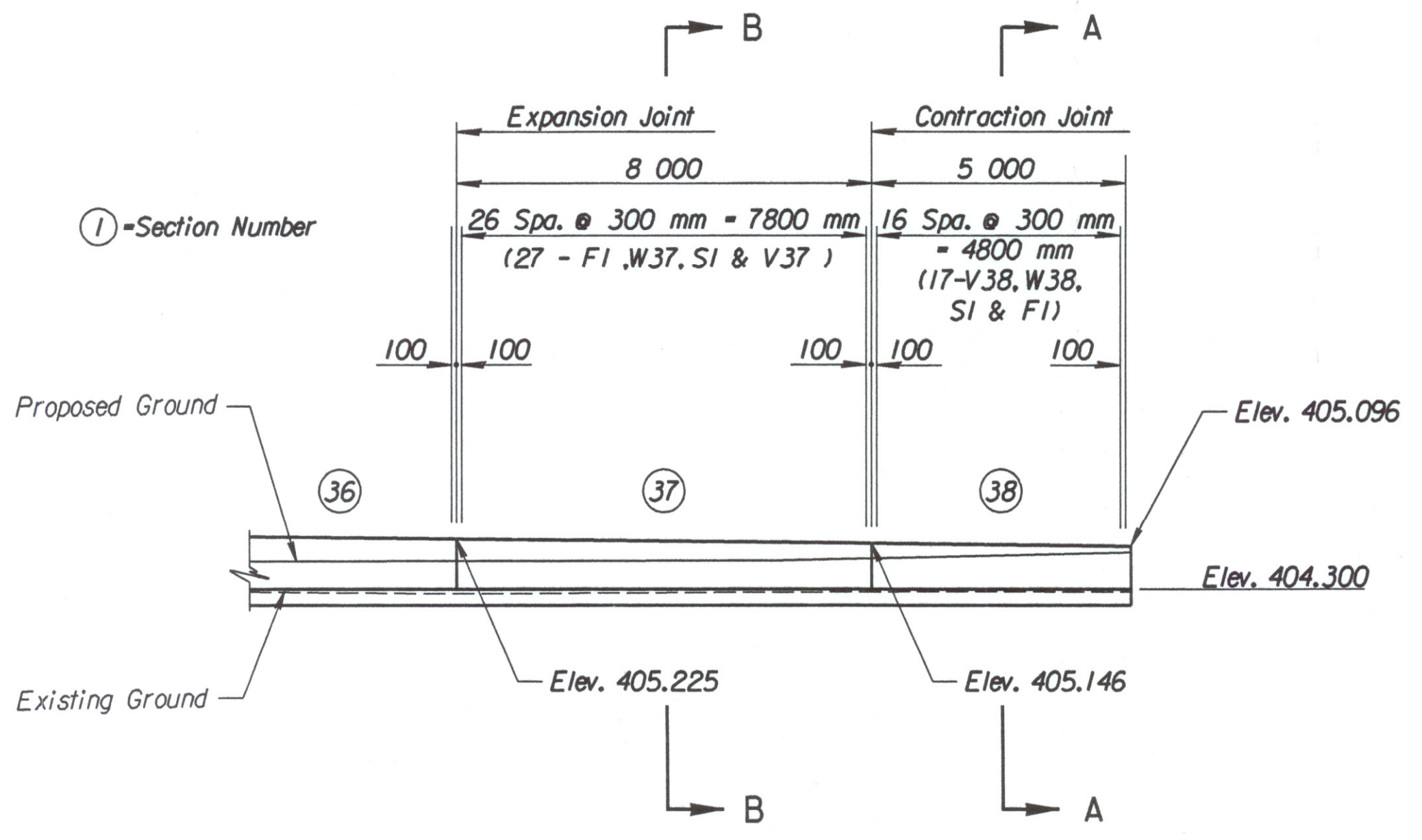
SECTION B-B

(Use for Sections ③③ - ③⑦)

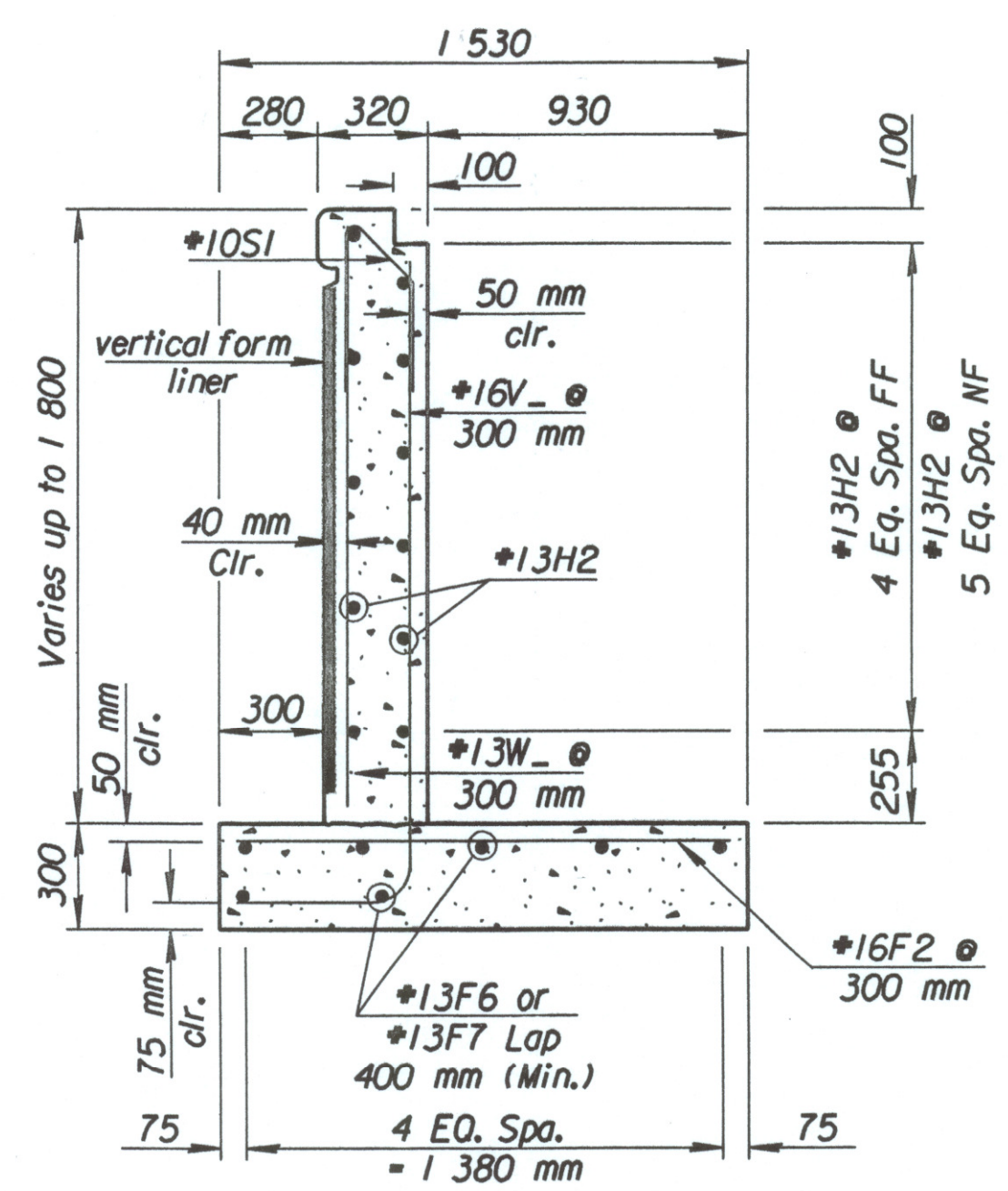


SECTION C-C

(Use for Sections ②, ②⑦ - ③②)

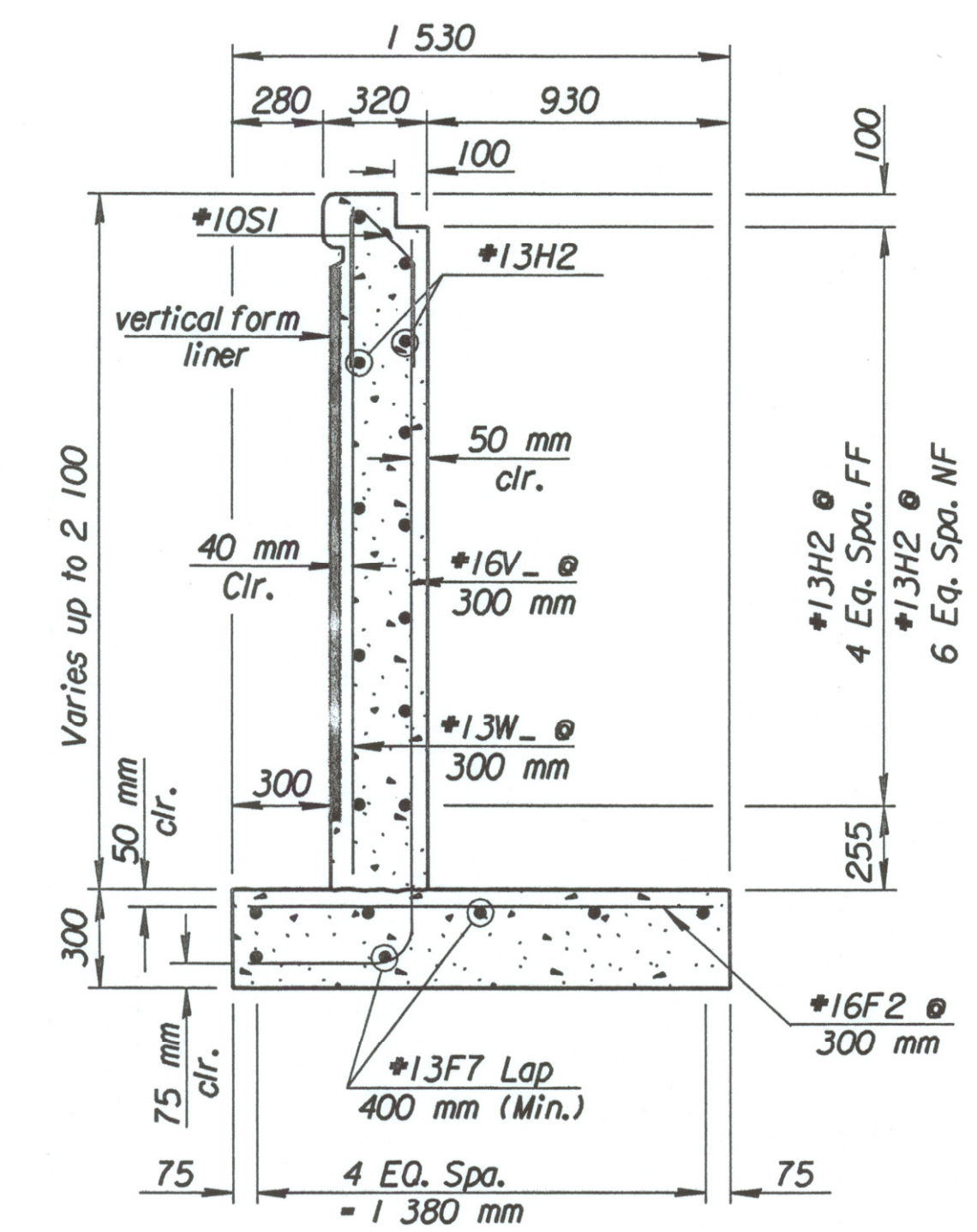


ELEVATION



SECTION D-D

(Use for Sections ③-⑥⑨-②⑥)



SECTION E-E

(Use for Sections ⑦-⑧)

DSNR: SET OPER: JGP SCALE: 1:100
 1:1997/97362/001/RETWALL/WALL10.DGN 3-01-2002 8:30:51 LAST REV: 3-25-2002 BY: svb

No.	Revisions	By	Date
CITY OF WICHITA RETAINING WALL #10 STA. 18+128 TO STA. 18+140 SEDGWICK COUNTY			
Professional Engineering Consultants, P.A. <small>303 S. TOPEKA • WICHITA, KANSAS 67202 316-262-2691 • FAX 316-262-3003</small>			
Designed by	SET	Checked by	RAS
Drawn by	DWK	Date	April, 2002
		Job No.	97362