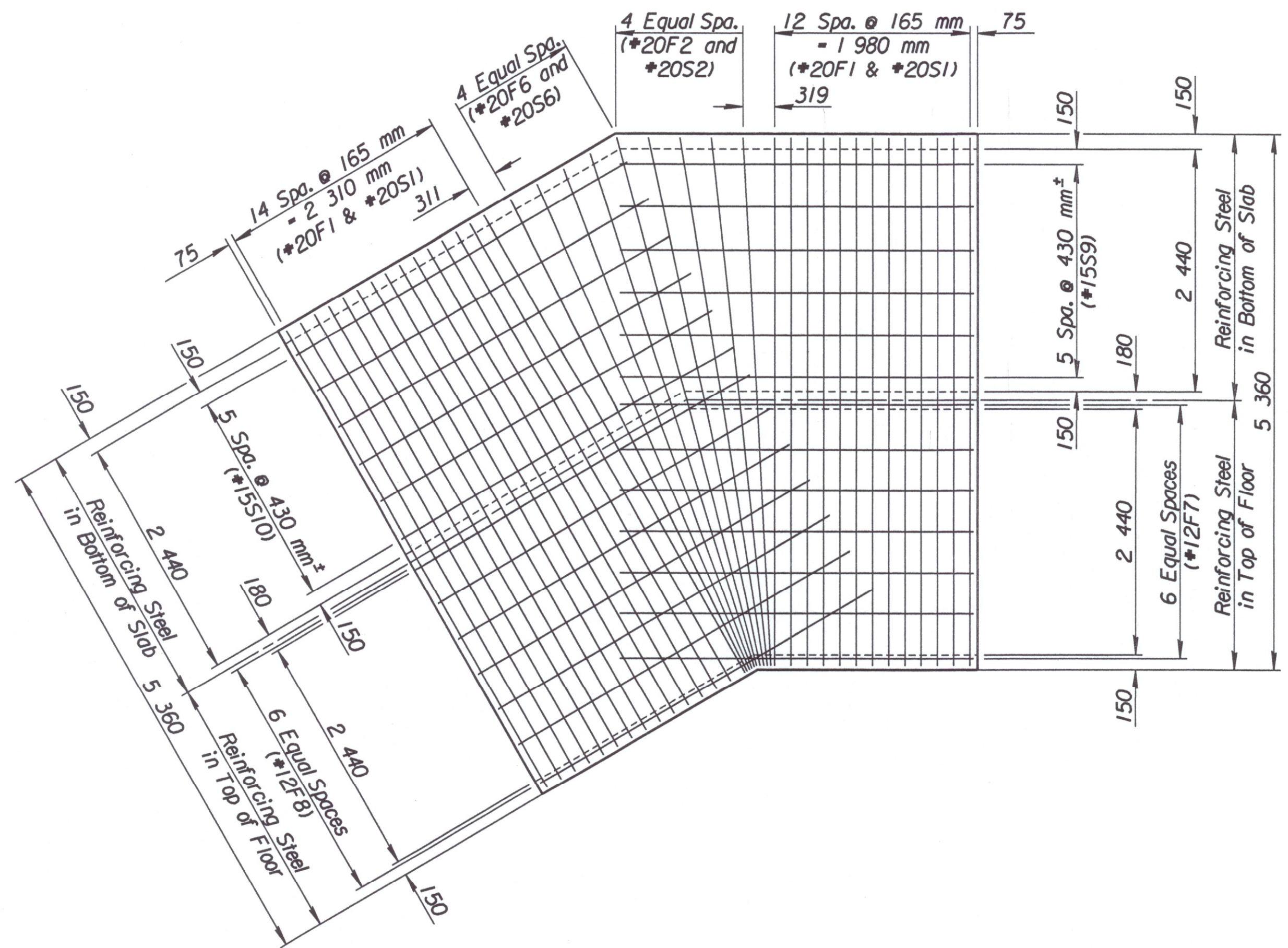
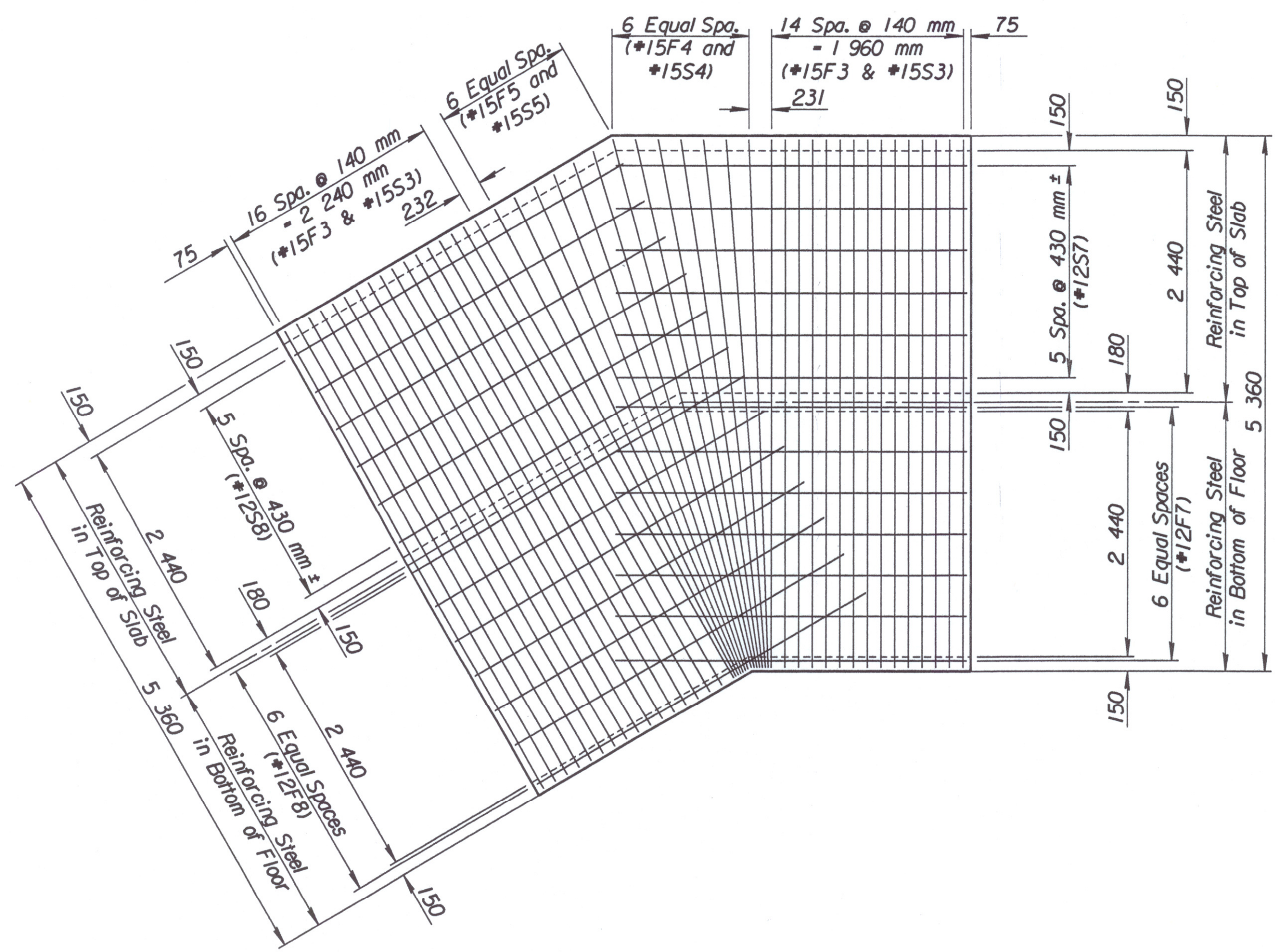


STATE	PROJECT NO.	YEAR	SHEET NO.	TOTAL SHEETS
KANSAS	54-87 K-6657-01	2002	392	1122




REINFORCING IN TOP OF FLOOR AND IN BOTTOM OF SLAB



REINFORCING IN BOTTOM OF FLOOR AND IN TOP OF SLAB

Plotted by: ras 2-1-2002
i:/1997/97362/001/rcb/dbl24bend.dgn

No.	Revisions	By	Date
CITY OF WICHITA SPECIAL 2 - 2.4 x 0.9 m R.C.B. SECTION AT P.I. WEST KELLOGG (US 54) SEDGWICK COUNTY			
 Professional Engineering Consultants, P.A. <small>303 S. TOPEKA • WICHITA, KANSAS 67202 316-262-2691 • FAX 316-262-3003</small>			
Designed by	RWA	Checked by	RAS
Drawn by	GDR	Date	April, 2002 Job No. 97362